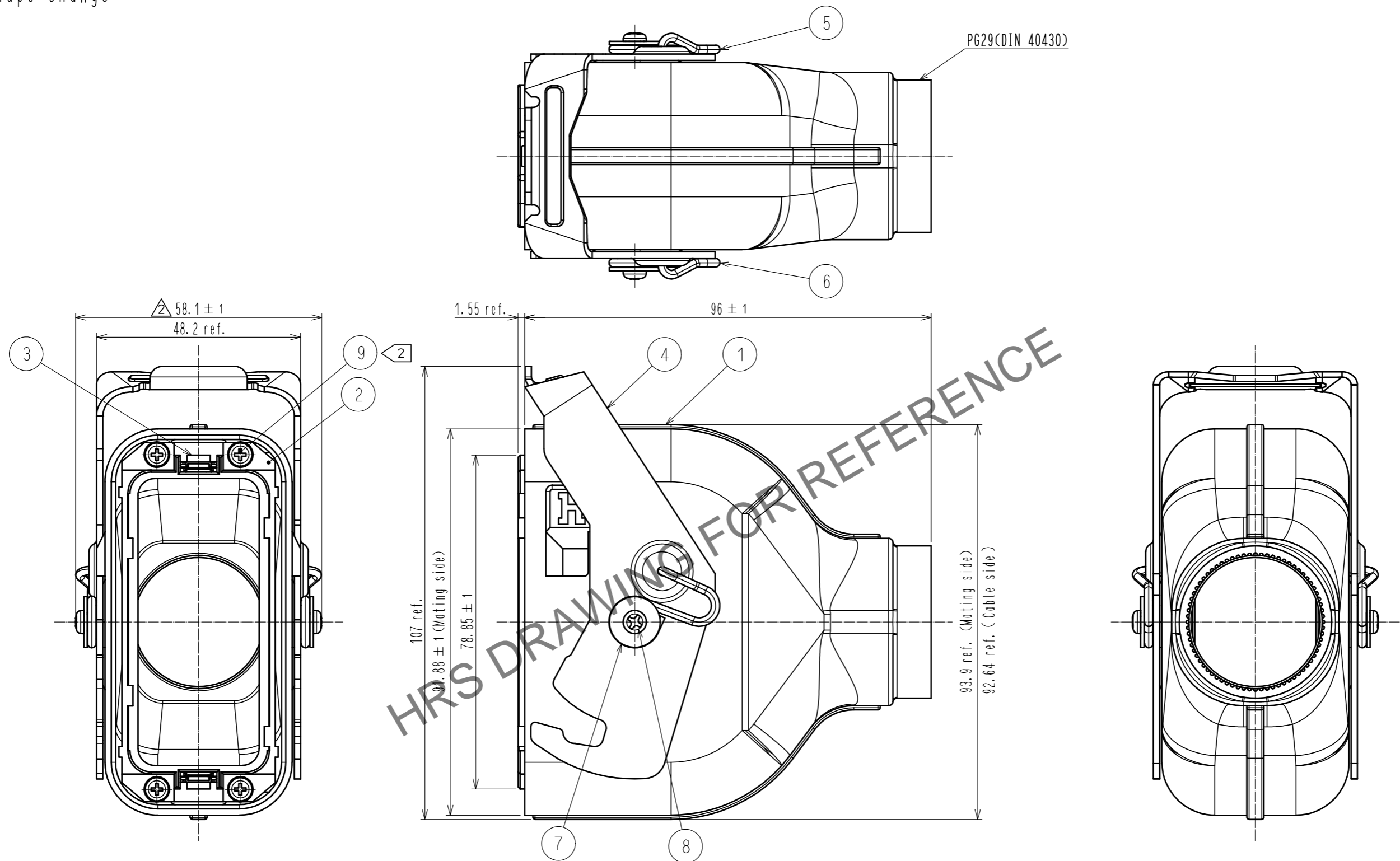


Mar.1.2024 Copyright 2024 HIROSE ELECTRIC CO., LTD. All Rights Reserved.  
In case of consideration for using Automotive equipment / device which demand high reliability, kindly contact our sales window correspondents.

△ Shape change

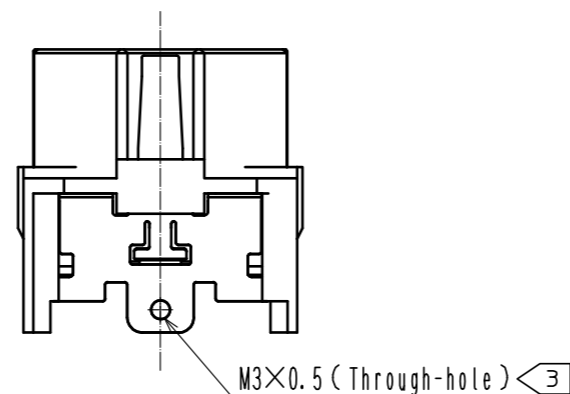
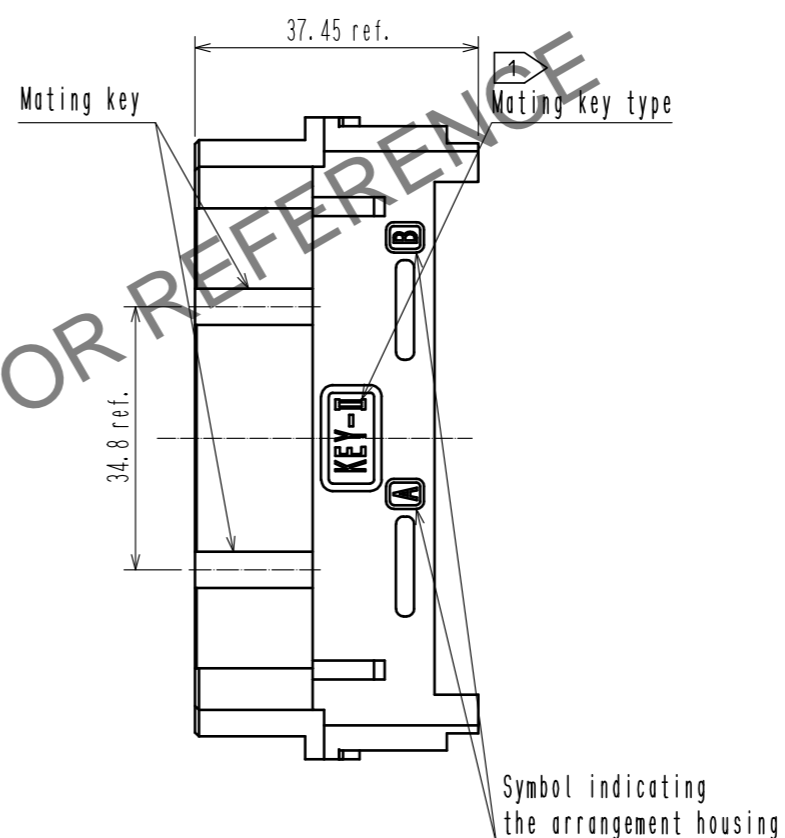
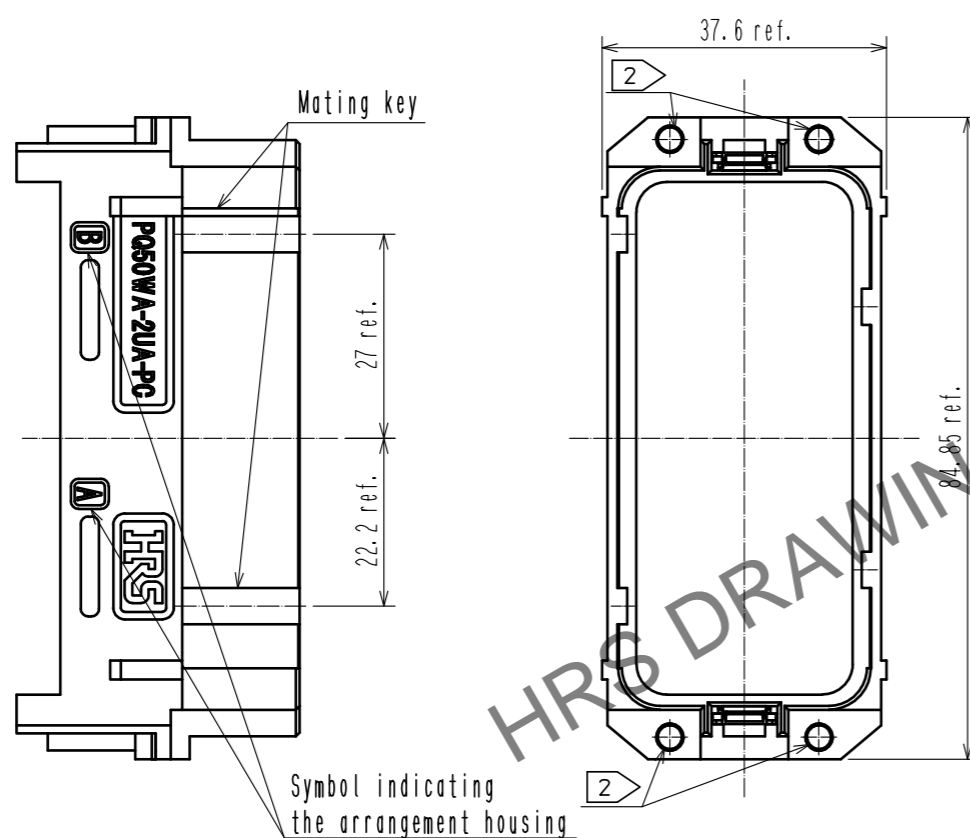
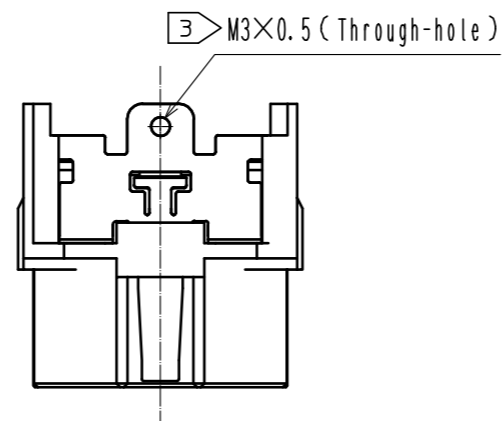


- Note
- 1 Mating key type is 'II'.
  - 2 The screw which attaches plug case (ref No. ②, ③ assembly) and cover case (ref No. ①・④・⑤・⑥・⑦・⑧ assembly) is appended products.  
(Recommended tightening torque : 0.32~0.63 N・m)
  - 3 Use recommended screw (Commercial item) to attach the crimp terminal to this product.  
(Recommended screw JIS B 1188 cross recessed pan head machine screw with captive washer M3×0.5×4  
(Recommended tightening torque : 0.32~0.63 N・m)
  - 4 Refer to ETAD-E3149 for the conformity connectors with this product.
  - 5 Refer to ETAD-E3151 for the procedure of the cable assembly.
  - 6 This is a die casting product. molten metal flow patterns and small roughness may appear on the surface.  
However there is no problem in the product functions.
  - 7 Sales unit: 20 pcs/box.

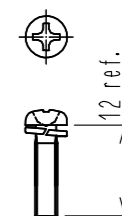
4	Stainless steel		9	Steel	Nickel plating
3	Stainless steel	Nickel plating	8	Steel	Nickel plating
2	Aluminum alloy		7	Steel	Nickel plating
1	Aluminum alloy		6	Stainless steel	
			5	Stainless steel	
NO.	MATERIAL	FINISH . REMARKS	NO.	MATERIAL	FINISH . REMARKS
UNITS mm		SCALE 1 : 1	COUNT 5	DESCRIPTION OF REVISIONS DIS-E-00004819	DESIGNED HY. MATSUDA
<b>HRS</b> HIROSE ELECTRIC CO., LTD.		APPROVED : MN. KENJO	20200214	DRAWING NO. EDC-129287-00-00	CHECKED TU. TANIGUCHI
		CHECKED : TU. TANIGUCHI	20200214	PART NO. PQ50WA-2UA-PC1	DATE 20210326
		DESIGNED : HY. MATSUDA	20200214	CODE NO. CL0236-2097-0-00	
		DRAWN : HY. MATSUDA	20200214		

Mar.1.2024 Copyright 2024 HIROSE ELECTRIC CO., LTD. All Rights Reserved.  
In case of consideration for using Automotive equipment / device which demand high reliability, kindly contact our sales window correspondents.

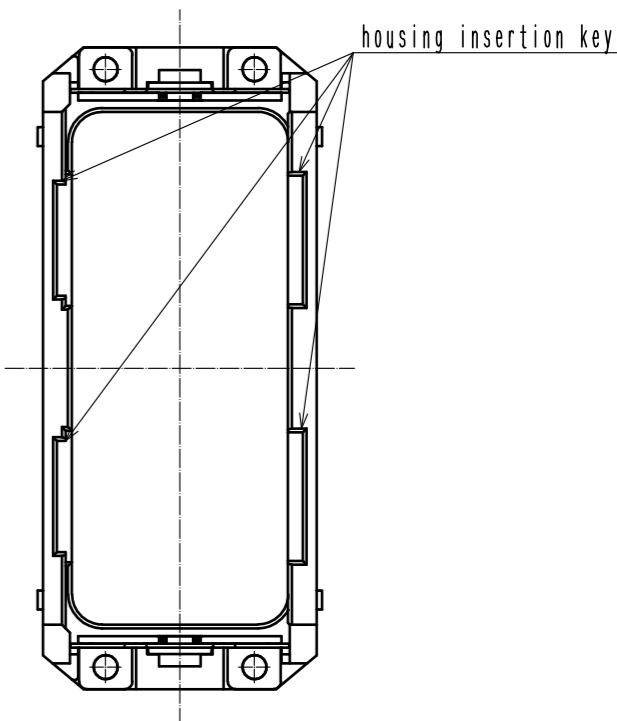
Plug case  
(Ref No. ②・③ assembly)



② Screw for attach to the plug case  
(Ref No. ⑨ attachment)



JIS B 1188: Cross recessed pan head machine screw with  
captive washer M3×0.5×12



**HRS**

DRAWING NO.	EDC-129287-00-00
PART NO.	PQ50WA-2UA-PC1
CODE NO.	CL0236-2097-0-00

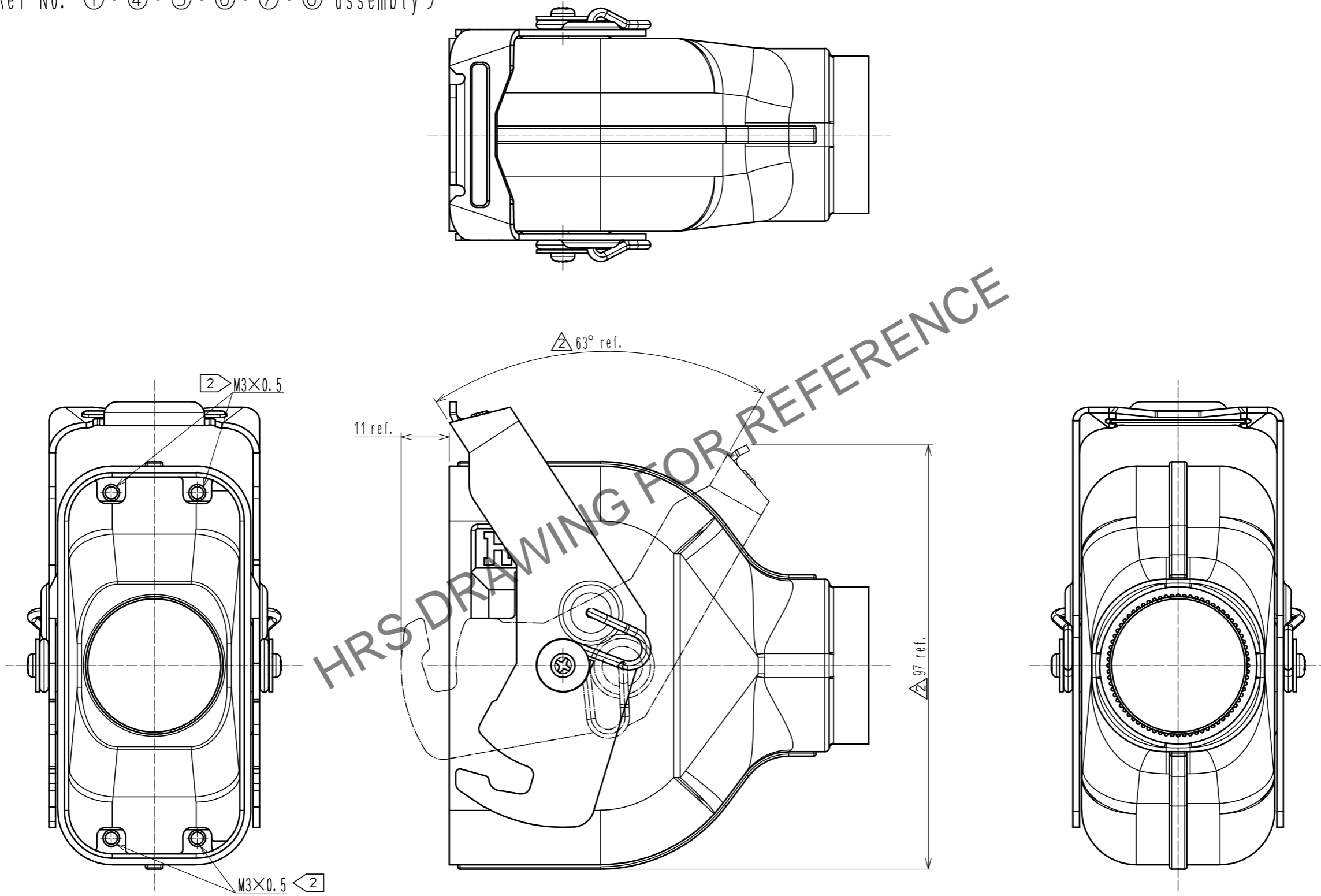
②/③

Mar.1.2024 Copyright 2024 HIROSE ELECTRIC CO., LTD. All Rights Reserved.  
In case of consideration for using Automotive equipment / device which demand high reliability, kindly contact our sales window correspondents.

△Shape change

Cover case

(Ref No. ①・④・⑤・⑥・⑦・⑧ assembly)



HRS	DRAWING NO.	EDC-129287-00-00	△ <sup>3</sup> / <sub>3</sub>
	PART NO.	PQ50WA-2UA-PC1	
	CODE NO.	CL0236-2097-0-00	