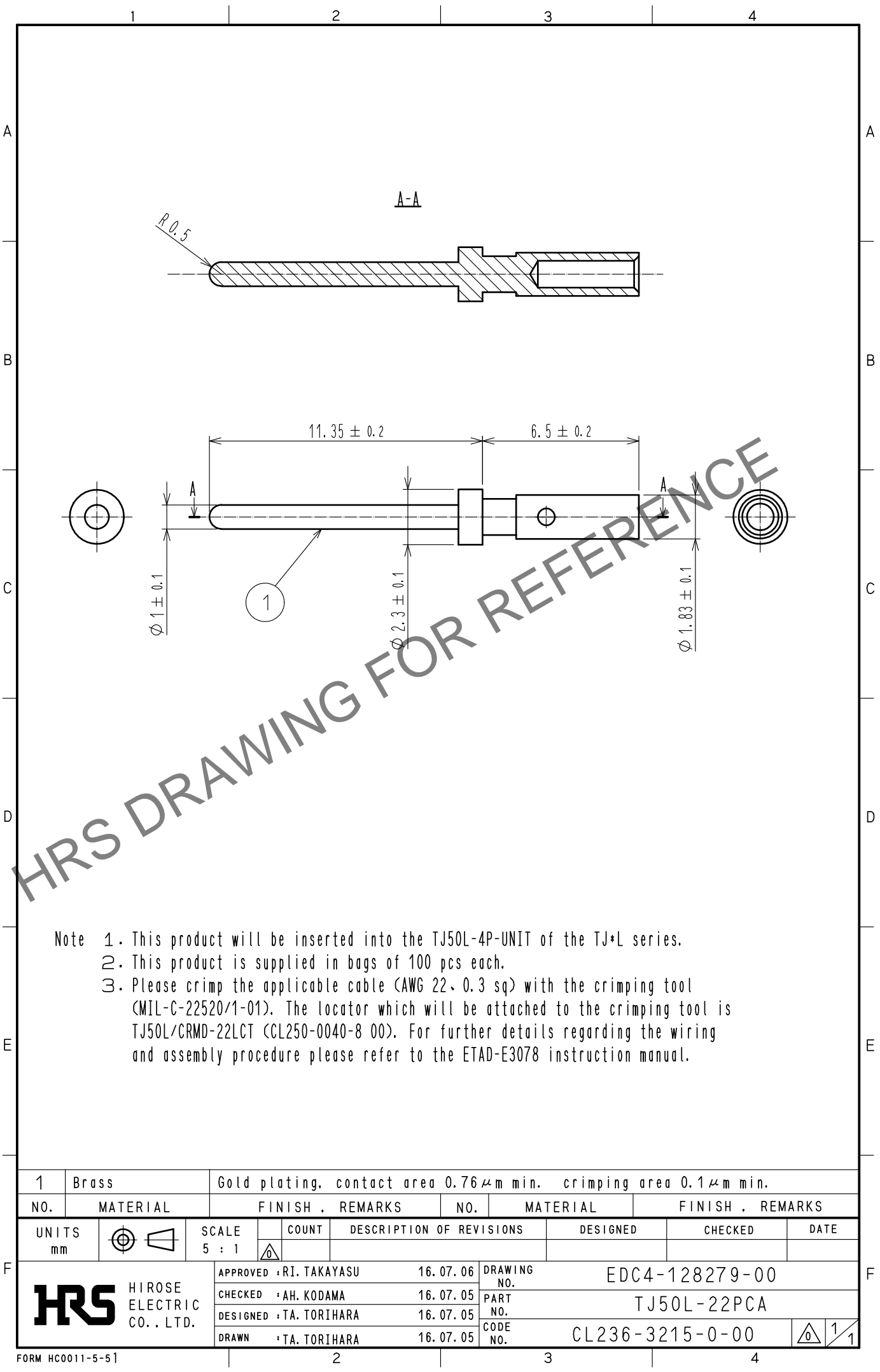
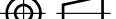





Apr.1.2024 Copyright 2024 HIROSE ELECTRIC CO., LTD. All Rights Reserved.  
In case of consideration for using Automotive equipment / device which demand high reliability, kindly contact our sales window correspondents.



Note 1. This product will be inserted into the TJ50L-4P-UNIT of the TJ\*L series.  
2. This product is supplied in bags of 100 pcs each.  
3. Please crimp the applicable cable (AWG 22, 0.3 sq) with the crimping tool (MIL-C-22520/1-01). The locator which will be attached to the crimping tool is TJ50L/CRMD-22LCT (CL250-0040-8 00). For further details regarding the wiring and assembly procedure please refer to the ETAD-E3078 instruction manual.

1	Brass	Gold plating, contact area 0.76μm min. crimping area 0.1μm min.						
NO.	MATERIAL	FINISH . REMARKS		NO.	MATERIAL	FINISH . REMARKS		
UNITS mm		SCALE 5 : 1		COUNT	DESCRIPTION OF REVISIONS	DESIGNED	CHECKED	DATE
 HIROSE ELECTRIC CO., LTD.			APPROVED		RI. TAKAYASU	16.07.06	DRAWING NO. EDC4-128279-00	
			CHECKED		AH. KODAMA	16.07.05	PART NO. TJ50L-22PCA	
			DESIGNED		TA. TORIHARA	16.07.05	CODE NO. CL236-3215-0-00	
			DRAWN		TA. TORIHARA	16.07.05	 1/1	