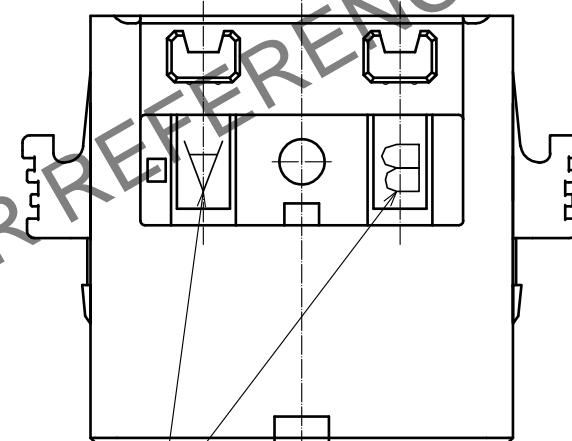
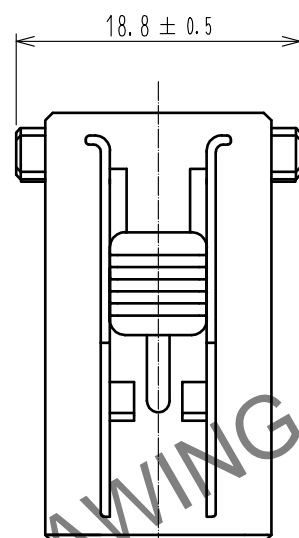
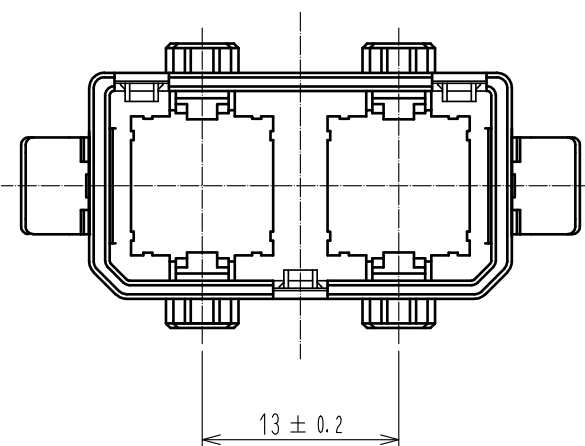
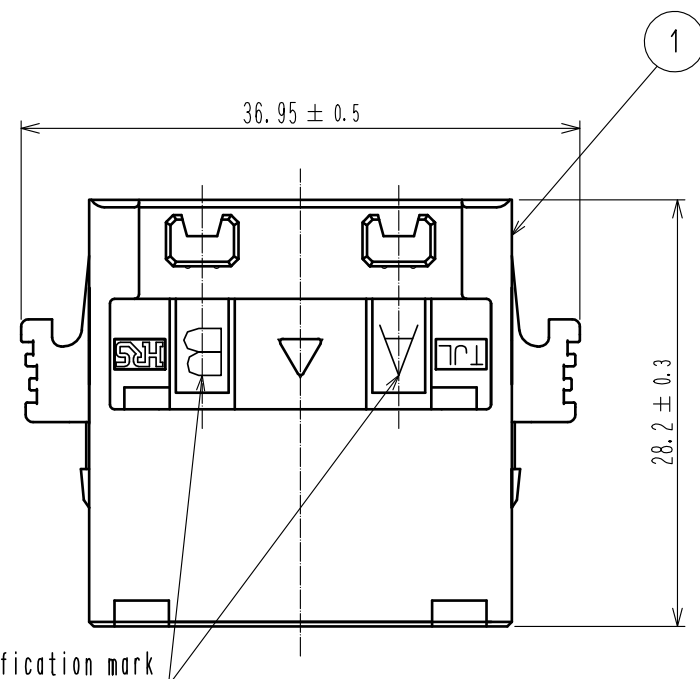
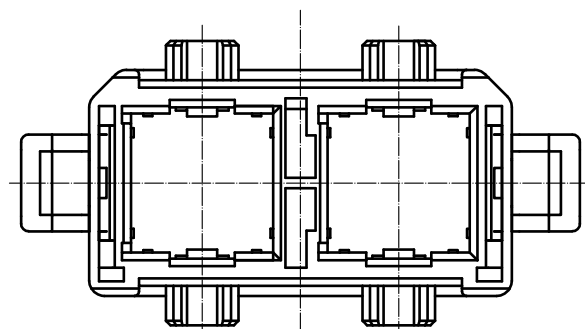


Apr.1.2024 Copyright 2024 HIROSE ELECTRIC CO., LTD. All Rights Reserved.  
In case of consideration for using Automotive equipment / device which demand high reliability, kindly contact our sales window correspondents.

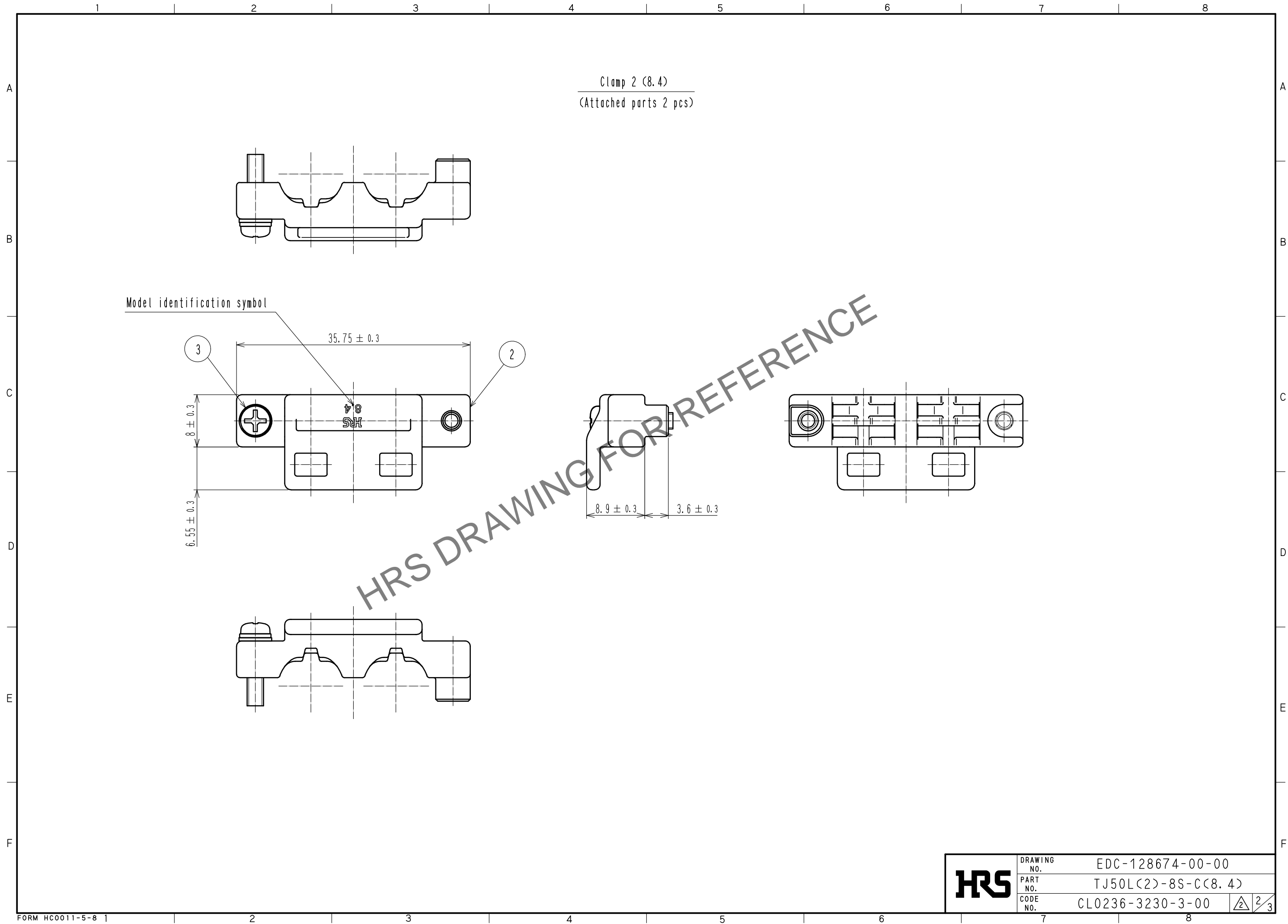


Part no.	Part name
①	P-Case (2)
②	Clamp 2 (8.4)
③	Pan head machine screw

- Note
- This product will be mated with the TJ\*L series 2 port jack.  
The TJ50L-4S-UNIT will be inserted in this product.  
Please check the ETAD-E3078 assembly manual (1 Port assembly manual) for further details.
  - The key to prevent a mismatching (sold separately)  
can be inserted in the places which are shown in the drawing.
  - The recommended tightening torque of the pan head machine screw to be  $0.36 \pm 0.07 \text{ N} \cdot \text{m}$ .  
To ensure a good balance between left and right, please tighten the pan head machine  
screws alternately.
  - As a countermeasure for vibration, please fixate the cable in between of  
150 mm from the clamp fittings.
  - The applicable cable profile (outer diameter) is  $\phi 8.4 \pm 0.4 \text{ mm}$ .

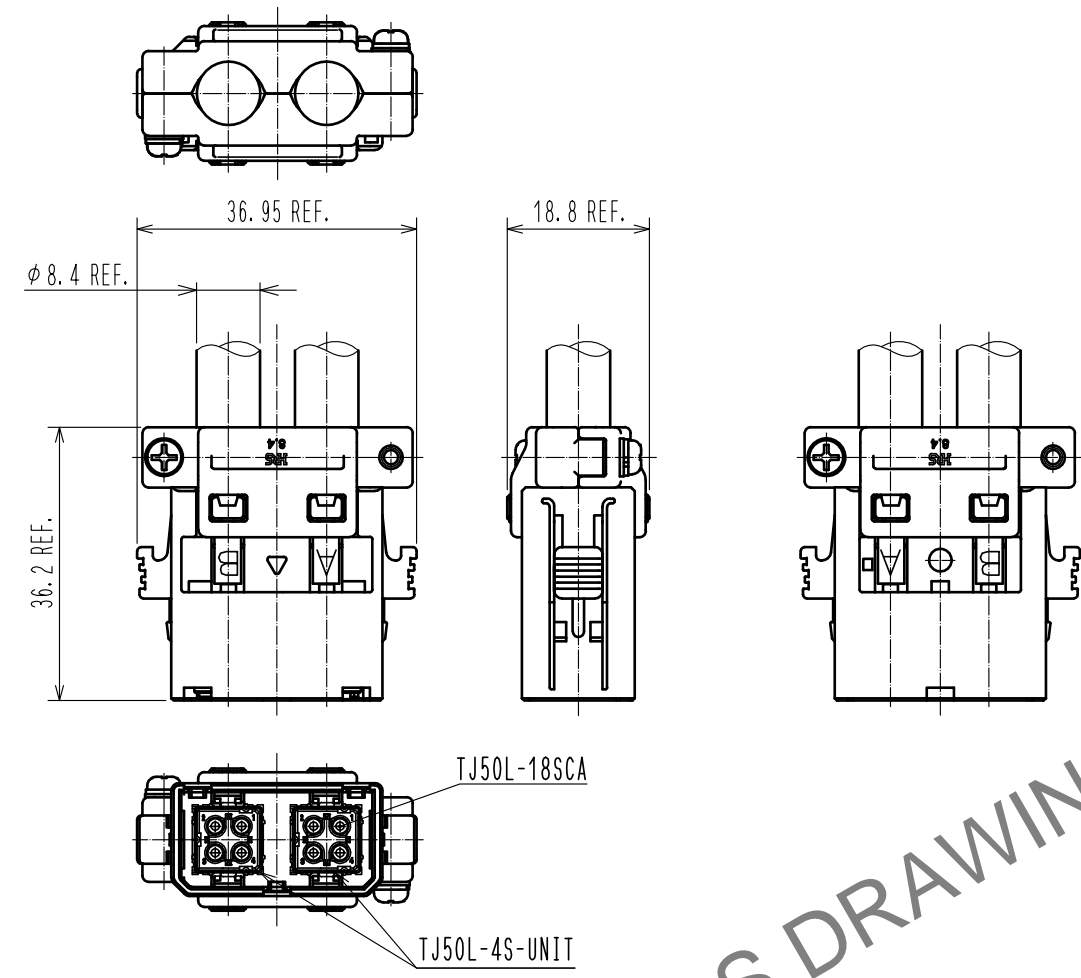
2	Zinc alloy	Under : Copper Plating 10 $\mu\text{m}$ MIN. Surface : Nickel Plating 5 $\mu\text{m}$ MIN.	3	Steel	M2.5 $\times$ 0.45 Surface : Zinc Plating 3 $\mu\text{m}$ MIN. Finish : Trivalent chromate treatment
1	PPS resin	Beige UL94V-0			
NO.	MATERIAL	FINISH . REMARKS	NO.	MATERIAL	FINISH . REMARKS
UNITS mm		SCALE 2 : 1	COUNT 2	DESCRIPTION OF REVISIONS DIS-E-00004258	DESIGNED HY. MATSUDA
HIROSE ELECTRIC CO., LTD.		APPROVED : RI. TAKAYASU	20161025	DRAWING NO. EDC-128674-00-00	
		CHECKED : AH. KODAMA	20161024	PART NO. TJ50L(2)-8S-C(8.4)	
		DESIGNED : TA. TORIHARA	20161024	CODE NO. CL0236-3230-3-00	
		DRAWN : TA. TORIHARA	20161024		
					1/3

Apr.1.2024 Copyright 2024 HIROSE ELECTRIC CO., LTD. All Rights Reserved.  
In case of consideration for using Automotive equipment / device which demand high reliability, kindly contact our sales window correspondents.



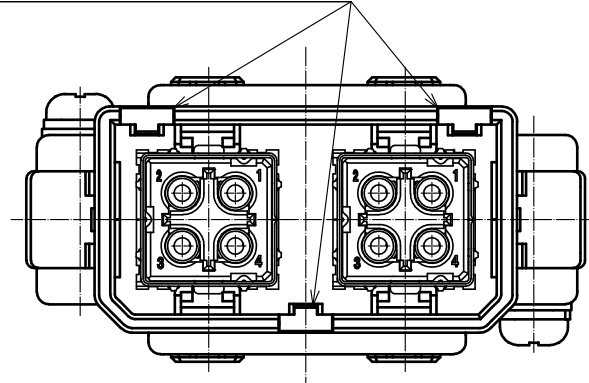
Apr.1.2024 Copyright 2024 HIROSE ELECTRIC CO., LTD. All Rights Reserved.  
In case of consideration for using Automotive equipment / device which demand high reliability, kindly contact our sales window correspondents.

Mounted state drawing (Cable mounted) (1:1)

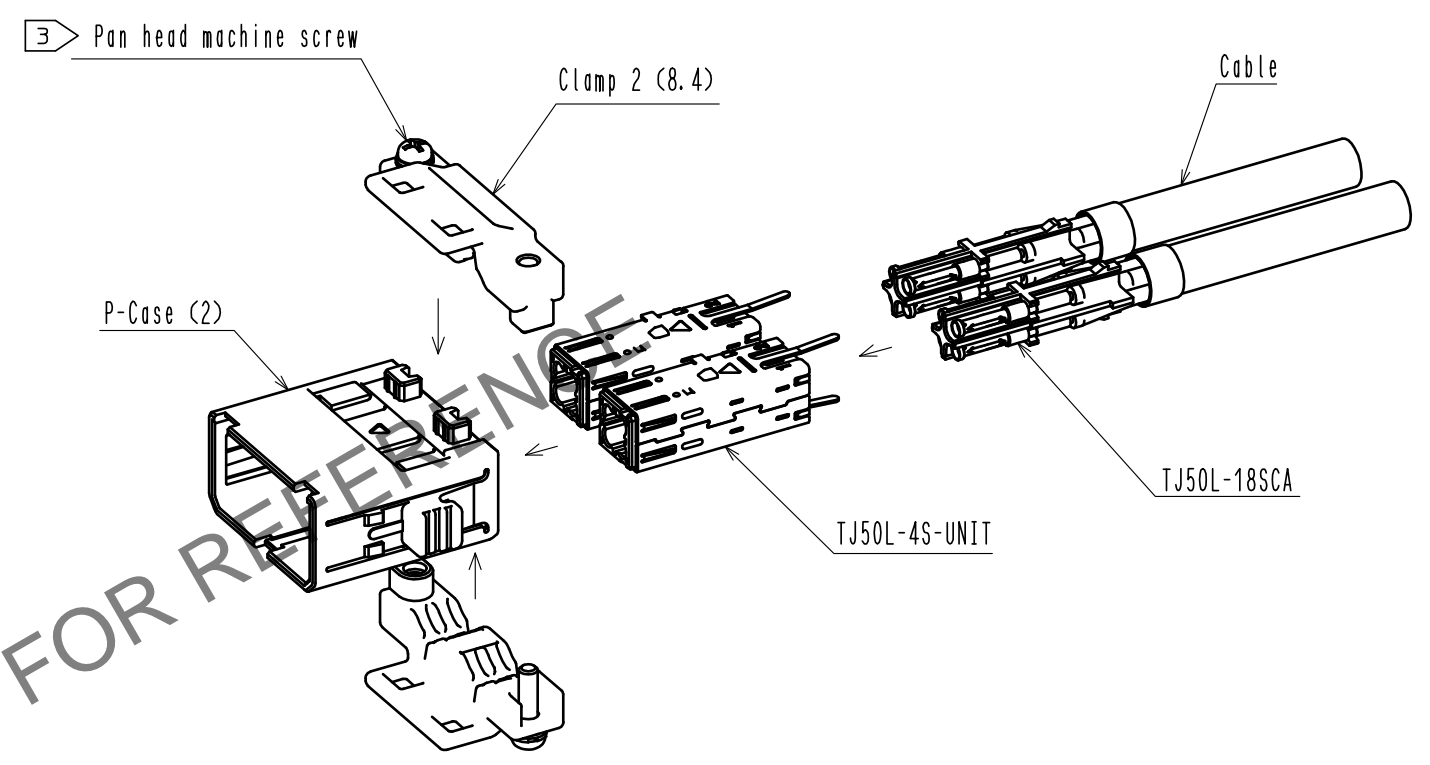


2 Key to prevent mismatching

Key to prevent mismatching (sold separately)  
(Part number:TJL-KY, Code number:CL236-3209-7-00)



Exploded view drawing (FREE)



HRS	DRAWING NO.	EDC-128674-00-00		
	PART NO.	TJ50L(2)-8S-C(8.4)		
	CODE NO.	CL0236-3230-3-00	2	3/3