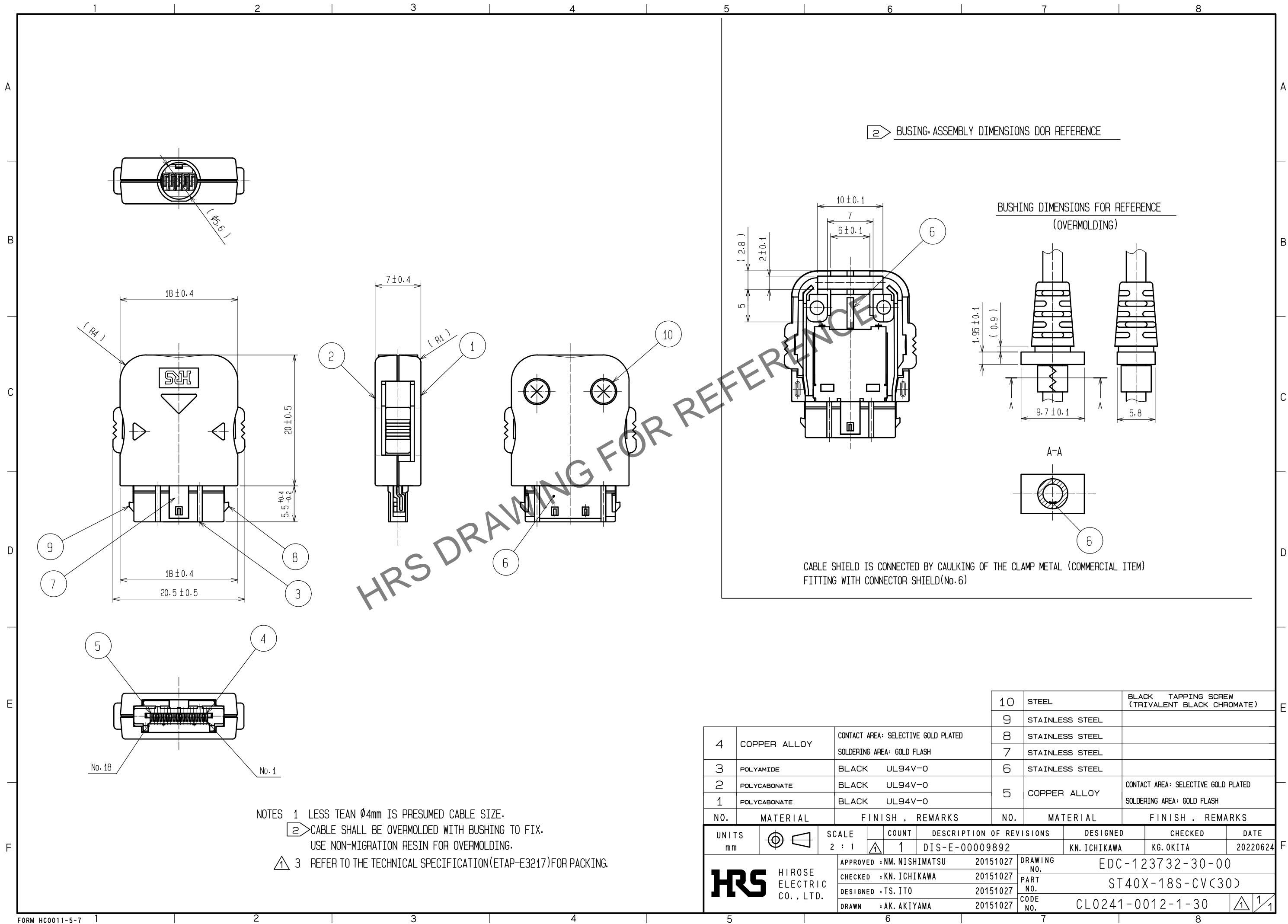


Mar.1.2024 Copyright 2024 HIROSE ELECTRIC CO., LTD. All Rights Reserved.
In case of consideration for using Automotive equipment / device which demand high reliability, kindly contact our sales window correspondents.



| | | | | | |
|------------------------------------|--|--|--|-----------------|---|
| | | | 10 | STEEL | BLACK TAPPING SCREW (TRIVALENT BLACK CHROMATE) |
| | | | 9 | STAINLESS STEEL | |
| | | | 8 | STAINLESS STEEL | |
| | | | 7 | STAINLESS STEEL | |
| | | | 6 | STAINLESS STEEL | |
| | | | 5 | COPPER ALLOY | CONTACT AREA: SELECTIVE GOLD PLATED SOLDERING AREA: GOLD FLASH |
| | | | 4 | COPPER ALLOY | CONTACT AREA: SELECTIVE GOLD PLATED SOLDERING AREA: GOLD FLASH |
| | | | 3 | POLYAMIDE | BLACK UL94V-0 |
| | | | 2 | POLYCARBONATE | BLACK UL94V-0 |
| | | | 1 | POLYCARBONATE | BLACK UL94V-0 |
| | | | | | |
| NO. MATERIAL FINISH . REMARKS | | | NO. MATERIAL FINISH . REMARKS | | |
| UNITS mm | | | SCALE 2 : 1 | | |
| COUNT 1 | | | DESCRIPTION OF REVISIONS DIS-E-00009892 | | |
| DESIGNED KN. ICHIKAWA | | | CHECKED KG. OKITA | | |
| DATE 20220624 | | | DRAWING NO. EDC-123732-30-00 | | |
| PART NO. ST40X-18S-CV(30) | | | CODE NO. CL0241-0012-1-30 | | |
| APPROVED : NM. NISHIMATSU 20151027 | | | DRAWN : AK. AKIYAMA 20151027 | | |
| CHECKED : KN. ICHIKAWA 20151027 | | | DESIGNED : TS. ITO 20151027 | | |
| HIROSE ELECTRIC CO., LTD. | | | HRS | | |