

Nov.1.2024 Copyright 2024 HIROSE ELECTRIC CO., LTD. All Rights Reserved.
In case of consideration for using Automotive equipment / device which demand high reliability, kindly contact our sales window correspondents.

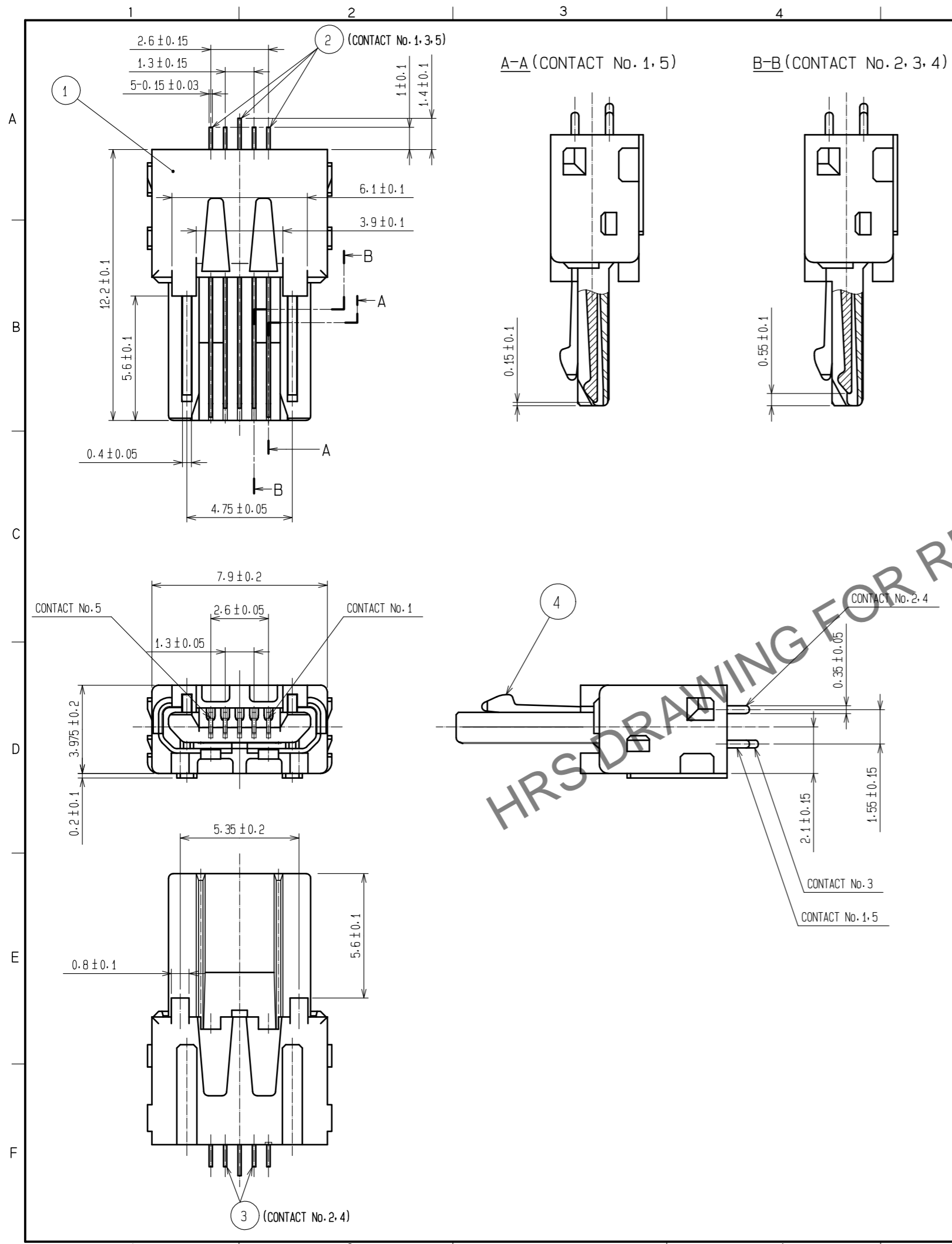
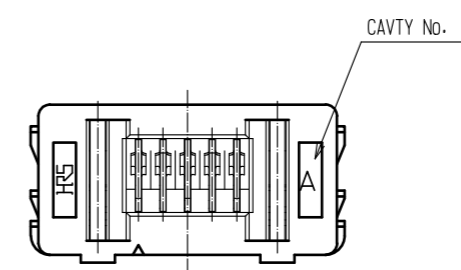
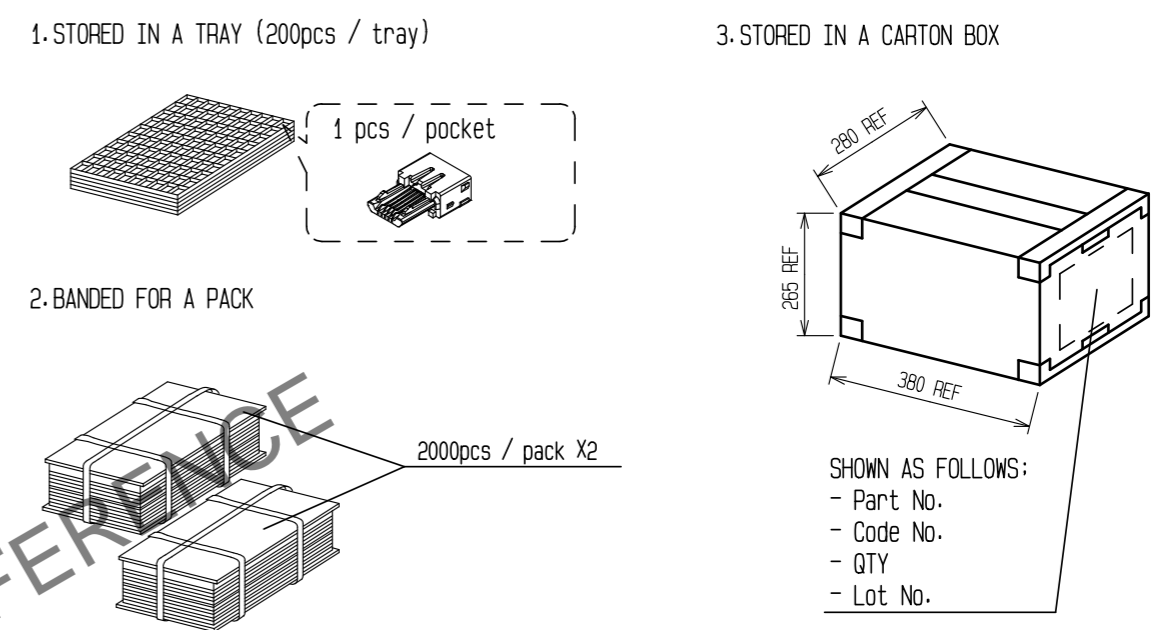


Fig - 1 PACKING SPECIFICATION -In the case of 4000 pcs-



NOTES 1 PLATING
 UNDER PLATING : NICKEL 2 μm MIN.
 CONTACT AREA : GOLD 0.75 μm MIN.
 LEAD AREA : TIN 1 μm MIN.

2	COPPER ALLOY	1	4	STAINLESS STEEL				
1	LCP	UL94V-0, BLACK	3	COPPER ALLOY				
NO.	MATERIAL	FINISH, REMARKS	NO.	MATERIAL	FINISH, REMARKS			
UNITS	mm	SCALE	5 : 1	COUNT	DESCRIPTION OF REVISIONS	DESIGNED	CHECKED	DATE
HIROSE ELECTRIC CO., LTD.		APPROVED	: NM. NISHIMATSU	15.10.27	DRAWING NO.	EDC-126085-30-00		
		CHECKED	: KN. ICHIKAWA	15.10.27	PART NO.	ZX20-B-5S-UNIT(30)		
		DESIGNED	: TS. ITO	15.10.27	CODE NO.	CL242-0012-8-30		
		DRAWN	: AK. AKIYAMA	15.10.27				

