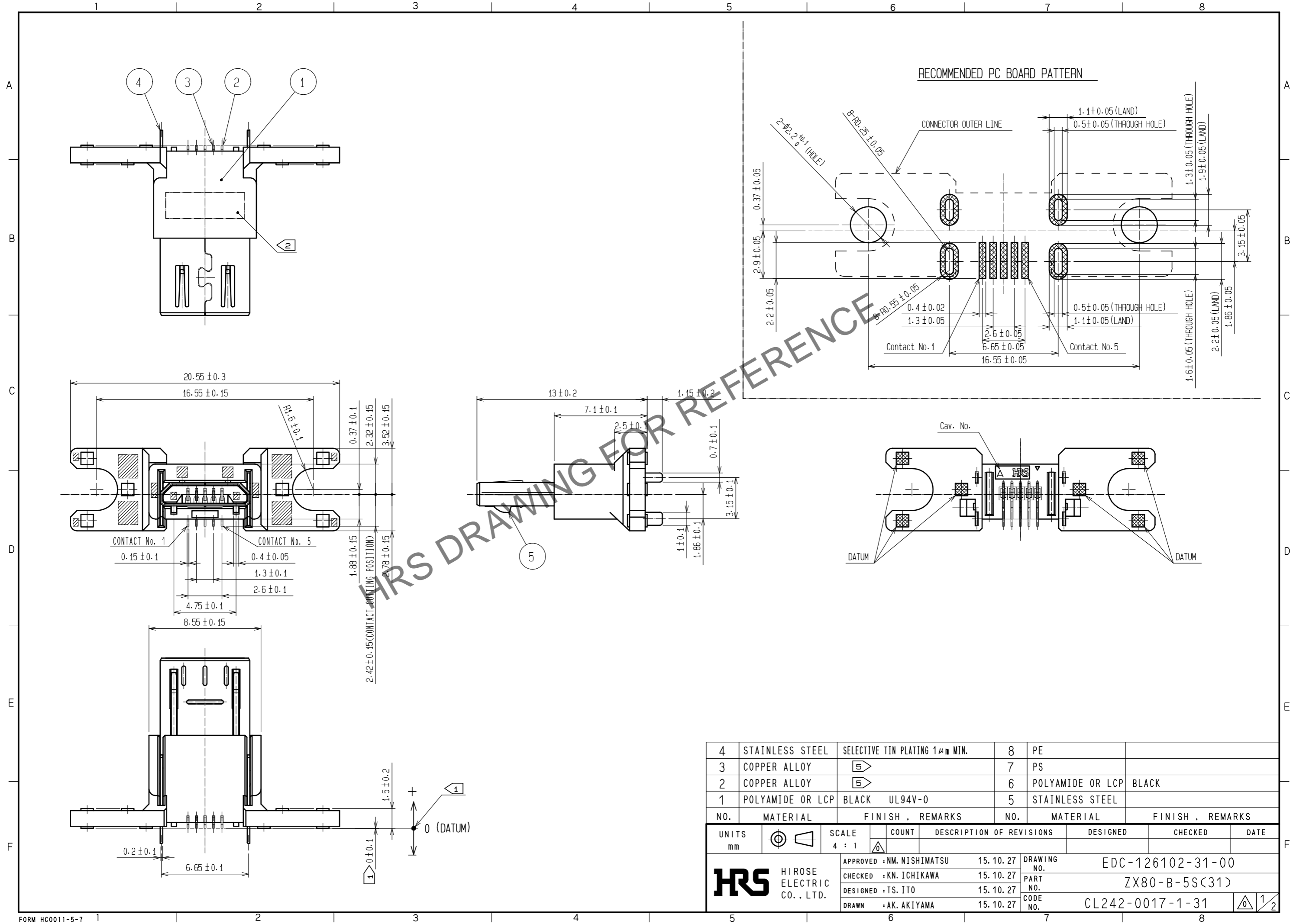


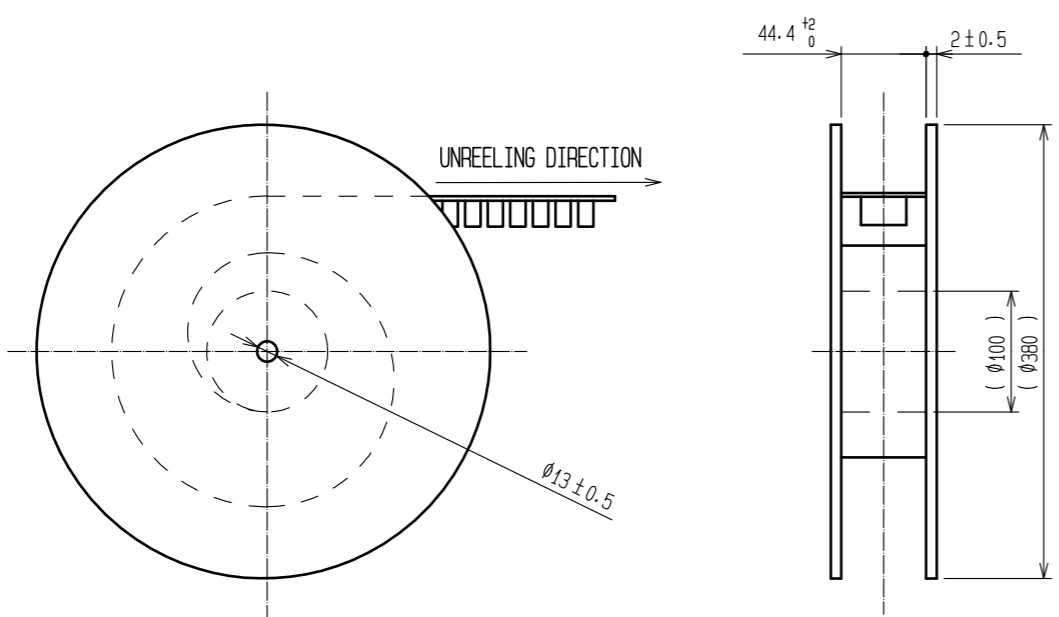
Jan.1.2025 Copyright 2025 HIROSE ELECTRIC CO., LTD. All Rights Reserved.
 In case of consideration for using Automotive equipment / device which demand high reliability, kindly contact our sales window correspondents.



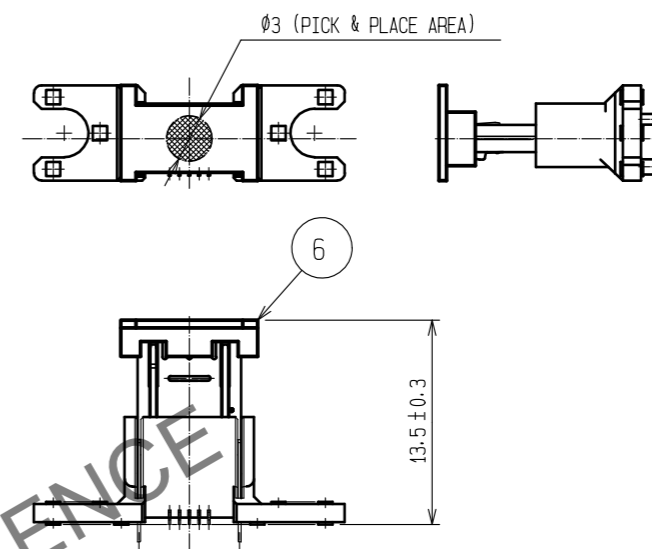
4	STAINLESS STEEL	SELECTIVE TIN PLATING 1μm MIN.	8	PE				
3	COPPER ALLOY	⑤	7	PS				
2	COPPER ALLOY	⑤	6	POLYAMIDE OR LCP	BLACK			
1	POLYAMIDE OR LCP	BLACK UL94V-0	5	STAINLESS STEEL				
NO.	MATERIAL	FINISH . REMARKS	NO.	MATERIAL	FINISH . REMARKS			
UNITS	mm	SCALE	4 : 1	COUNT	DESCRIPTION OF REVISIONS	DESIGNED	CHECKED	DATE
HRS HIROSE ELECTRIC CO., LTD.		APPROVED : NM. NISHIMATSU	15.10.27	DRAWING NO. EDC-126102-31-00				
		CHECKED : KN. ICHIKAWA	15.10.27	PART NO. ZX80-B-5S(31)				
		DESIGNED : TS. ITO	15.10.27	CODE NO. CL242-0017-1-31				
		DRAWN : AK. AKIYAMA	15.10.27					

Jan.1.2025 Copyright 2025 HIROSE ELECTRIC CO., LTD. All Rights Reserved.
 In case of consideration for using Automotive equipment / device which demand high reliability, kindly contact our sales window correspondents.

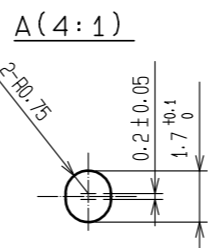
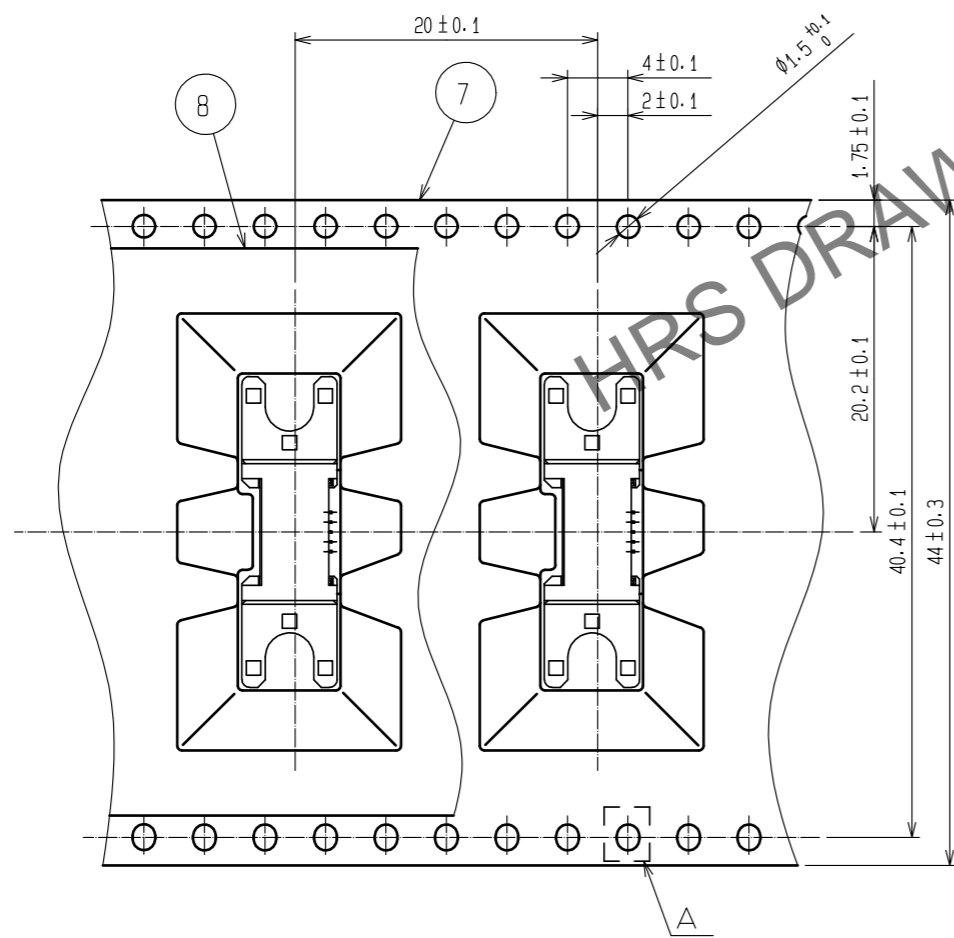
3 DRAWING FOR PACKING(FREE)



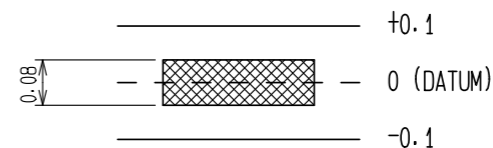
PICK & PLACE CAP(2:1)



UNREELING DIRECTION



NOTES. 1 DIMENSIONS OF SMT RANGE AND CO-PLANARITY ARE AS SHOWN BEROW.



- 2 LOT No. SHALL BE INDICATED AT THE POSITION AS SHOWN.
- 3 PER REEL: 200 pcs.
- 4. THE SHADED AREAS SHOW LOCATIONS OF EJECTOR PINS.
- 5 PLATING
 CONTACT AREA : GOLD 0.75µm MIN.
 READ AREA : GOLD 0.03µm MIN.
 UNDER PLATING: NICKEL 2µm MIN.

HRS	DRAWING NO.	EDC-126102-31-00
	PART NO.	ZX80-B-5S(31)
	CODE NO.	CL242-0017-1-31

2/2