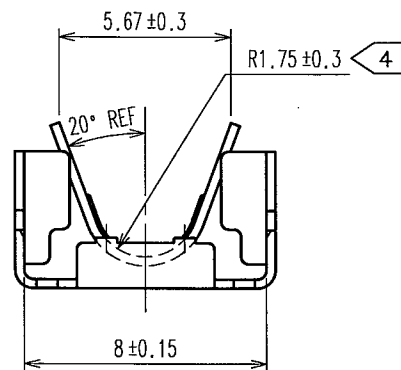
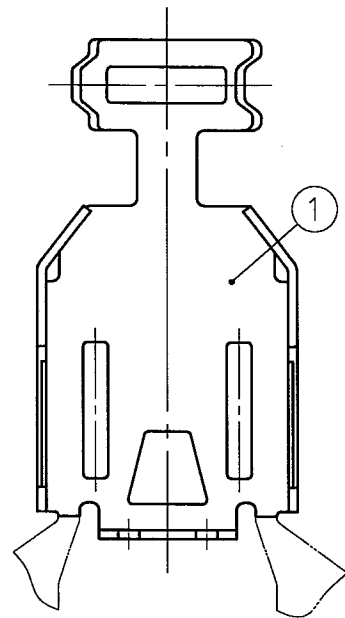
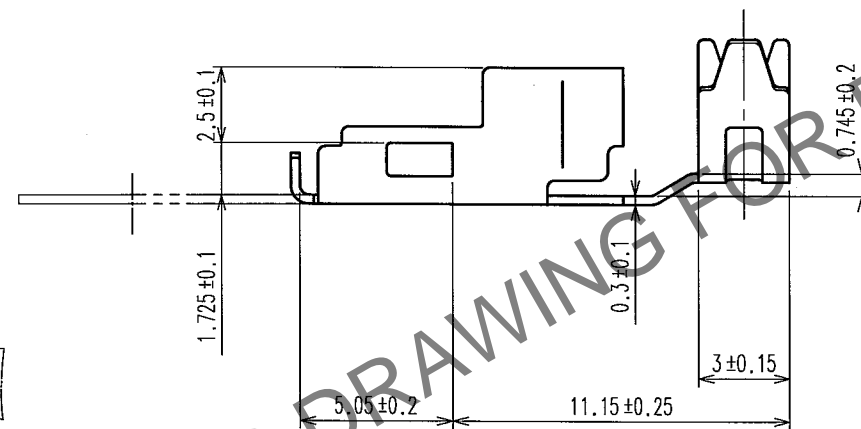
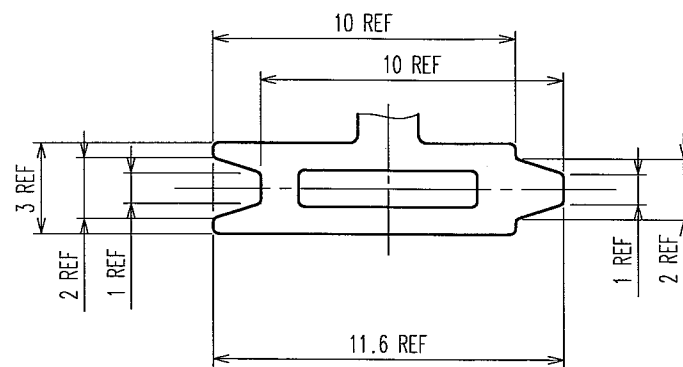


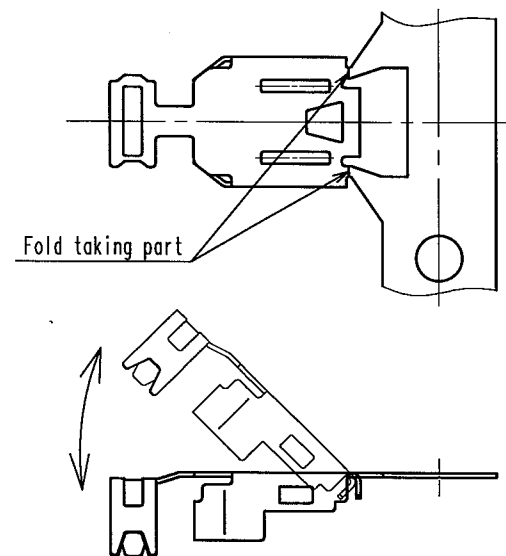
Apr.1.2024 Copyright 2024 HIROSE ELECTRIC CO., LTD. All Rights Reserved.
In case of consideration for using Automotive equipment / device which demand high reliability, kindly contact our sales window correspondents.



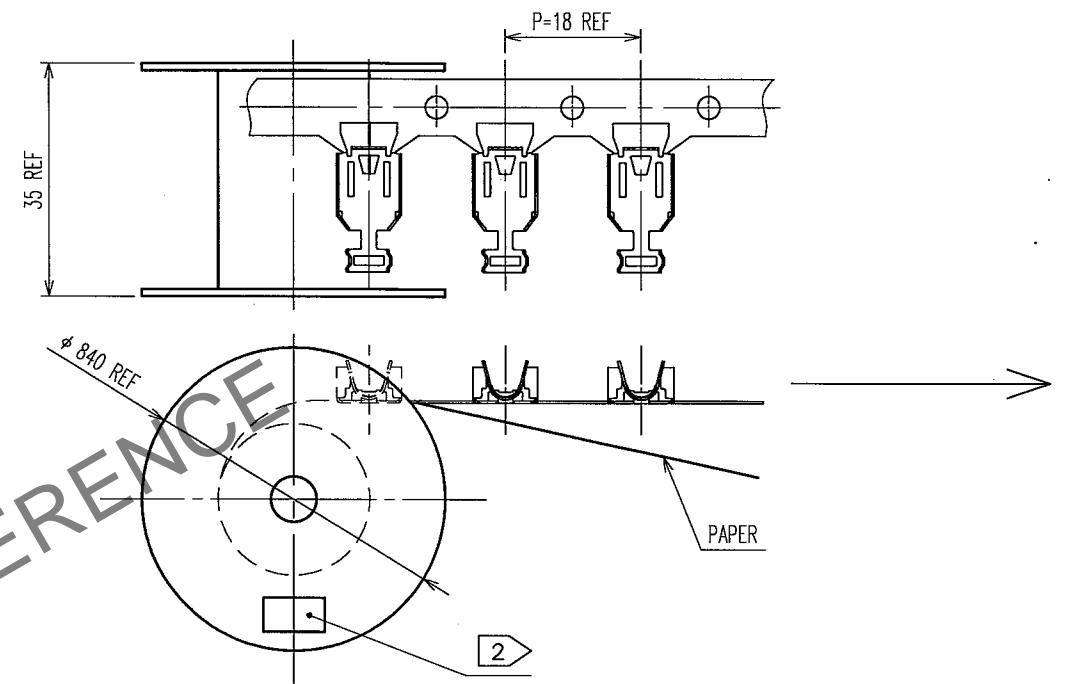
4 Fig - 3 DEVELOPMENT OF A CLAMPING PART



3 Fig - 2 CUT OFF A CAREER



1 Fig - 1 REELING



- NOTES
- 1 This is delivered by a reel.QTY:4000pcs
 - 2 Shown on a reel and a box is ; ' Part No.', ' Code No.', ' Lot No.', ' QTY'
 - 3 Cut off a career as shown in fig-2.
 - 4 This cable-clamping part is applied to $\phi 3.3$ mm cable.

1		STAINLESS STEEL			
NO.		MATERIAL		FINISH, REMARKS	
CODE NO. (OLD)		DRAWN	DESIGNED	CHECKED	APPROVED
		Y. Takeuchi	Y. Takeuchi	Y. Takeuchi	Y. Takeuchi
		06.11.21	06.11.21	06.11.21	06.11.21
DRAWING NO.		PART NO.		RELEASED	
EDC3-126152		ZX40-SLDB(3.3)			
SCALE		CODE NO.		1/1	
4 : 1		CL242-0023-4			
UNITS					
mm					

CODE NO. (OLD)		DRAWN	DESIGNED	CHECKED	APPROVED	RELEASED
		Y. Takeuchi 06.11.21	Y. Takeuchi 06.11.21	Y. Takeuchi 06.11.21	Y. Takeuchi 06.11.21	
		DRAWING NO.		PART NO.		
SCALE		EDC3-126152		ZX40-SLDB(3.3)		
4 : 1						
UNITS		CODE NO.		1/1		
mm		CL242-0023-4				
		HIROSE ELECTRIC CO., LTD				

HIROSE ELECTRIC CO., LTD