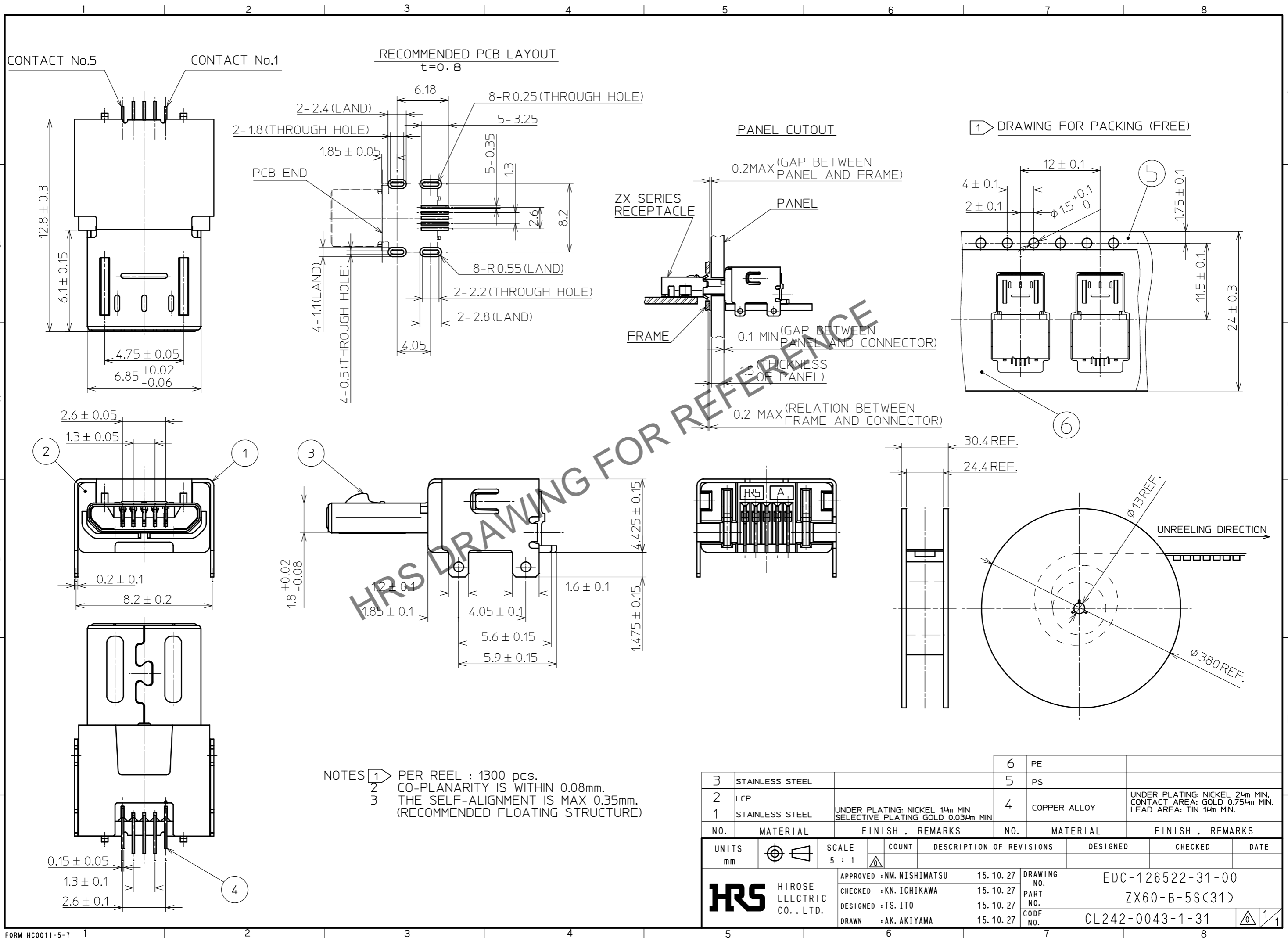


Nov.1.2024 Copyright 2024 HIROSE ELECTRIC CO., LTD. All Rights Reserved.
In case of consideration for using Automotive equipment / device which demand high reliability, kindly contact our sales window correspondents.



3	STAINLESS STEEL		6	PE				
2	LCP		5	PS				
1	STAINLESS STEEL	UNDER PLATING: NICKEL 14μm MIN SELECTIVE PLATING GOLD 0.03μm MIN	4	COPPER ALLOY	UNDER PLATING: NICKEL 24μm MIN. CONTACT AREA: GOLD 0.75μm MIN. LEAD AREA: TIN 14μm MIN.			
NO.	MATERIAL	FINISH . REMARKS	NO.	MATERIAL	FINISH . REMARKS			
UNITS	mm	SCALE	5 : 1	COUNT	DESCRIPTION OF REVISIONS	DESIGNED	CHECKED	DATE
HRS HIROSE ELECTRIC CO., LTD.		APPROVED : NM. NISHIMATSU	15.10.27	DRAWING NO. EDC-126522-31-00				
		CHECKED : KN. ICHIKAWA	15.10.27	PART NO. ZX60-B-5S(31)				
		DESIGNED : TS. ITO	15.10.27	CODE NO. CL242-0043-1-31				
		DRAWN : AK. AKIYAMA	15.10.27					