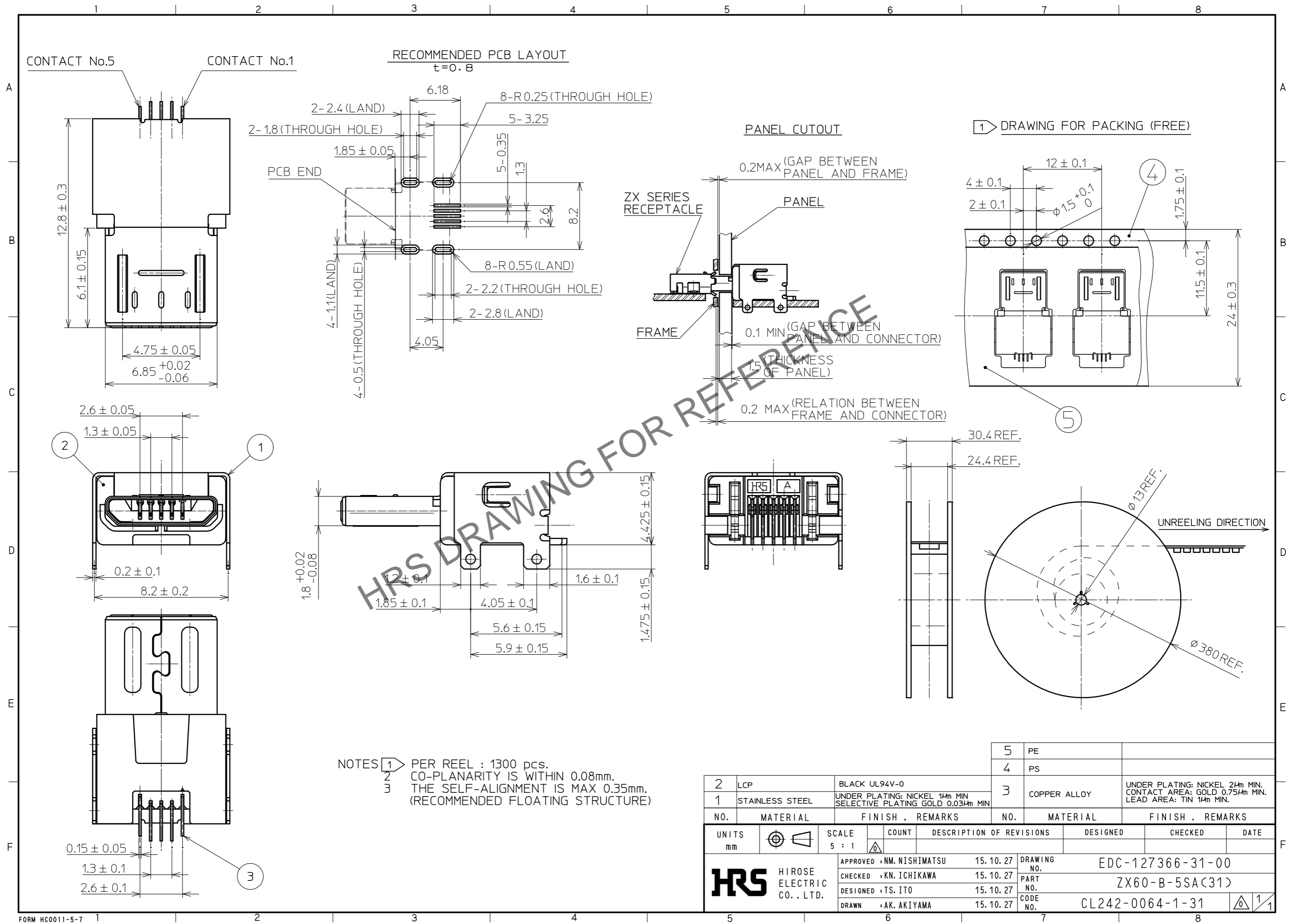


Dec.1.2024 Copyright 2024 HIROSE ELECTRIC CO., LTD. All Rights Reserved.
In case of consideration for using Automotive equipment / device which demand high reliability, kindly contact our sales window correspondents.



2	LCP	BLACK UL94V-0	5	PE			
1	STAINLESS STEEL	UNDER PLATING: NICKEL 14 μ m MIN SELECTIVE PLATING GOLD 0.034 μ m MIN	4	PS			
			3	COPPER ALLOY	UNDER PLATING: NICKEL 24 μ m MIN. CONTACT AREA: GOLD 0.754 μ m MIN. LEAD AREA: TIN 14 μ m MIN.		
NO.	MATERIAL	FINISH . REMARKS	NO.	MATERIAL	FINISH . REMARKS		
UNITS	\odot \triangleleft	SCALE	COUNT	DESCRIPTION OF REVISIONS	DESIGNED	CHECKED	DATE
mm		5 : 1	\triangleleft				
HRS HIROSE ELECTRIC CO., LTD.		APPROVED : NM. NISHIMATSU	15.10.27	DRAWING NO. EDC-127366-31-00			
		CHECKED : KN. ICHIKAWA	15.10.27	PART NO. ZX60-B-5SA(31)			
		DESIGNED : TS. ITO	15.10.27	CODE NO. CL242-0064-1-31			
		DRAWN : AK. AKIYAMA	15.10.27				