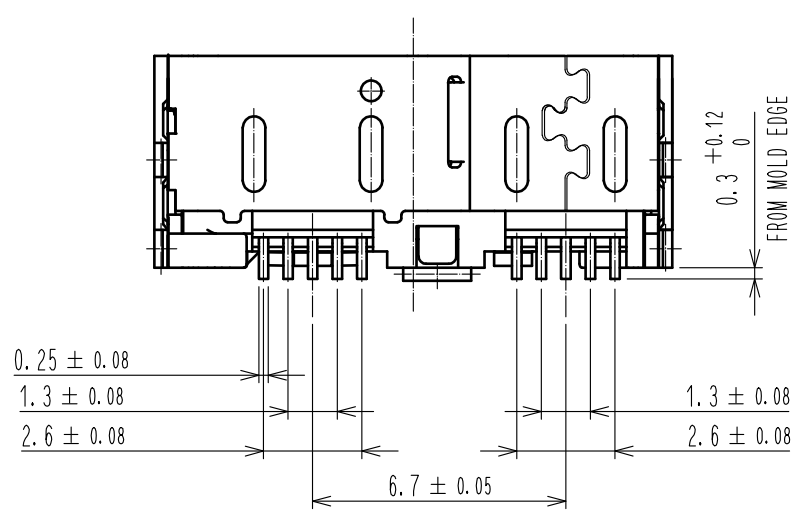
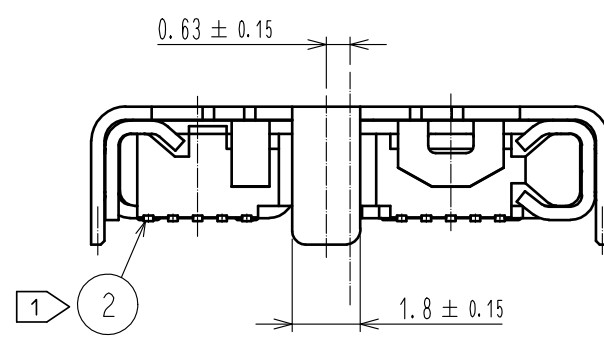
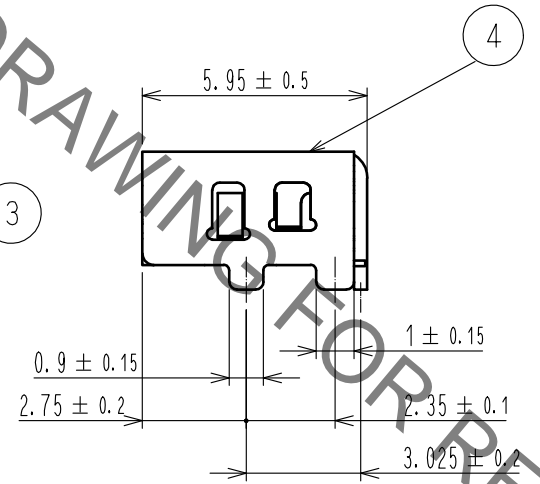
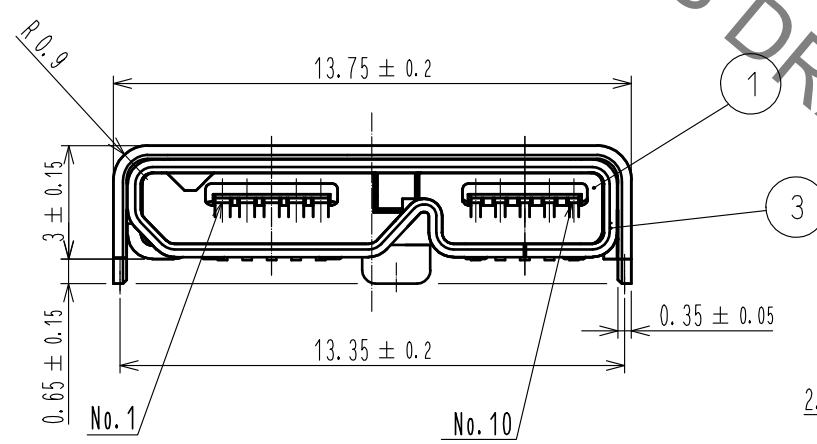
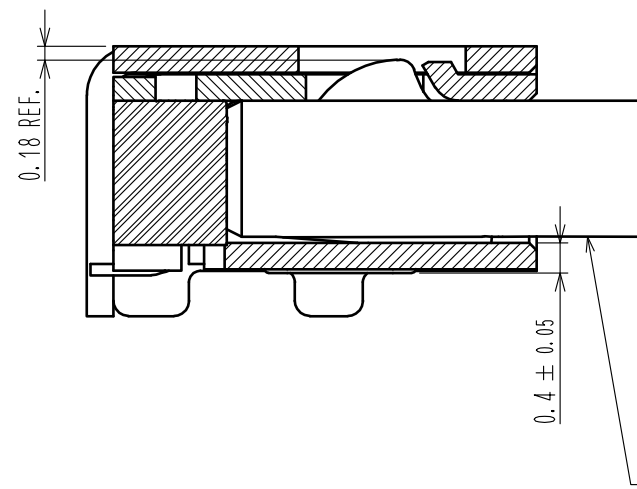
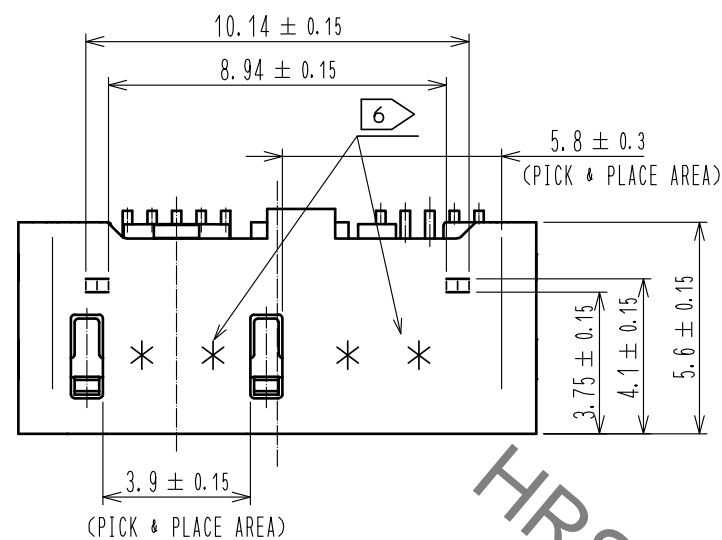


Jun.1.2021 Copyright 2021 HIROSE ELECTRIC CO., LTD. All Rights Reserved.
In case of consideration for using Automotive equipment / device which demand high reliability, kindly contact our sales window correspondents.

DRAWING FOR MATING (10:1)
(CROSS-SECTION OF LOCK)

6 LOT NUMBER (4 DIGITS)

| YEAR | MONTH | DAY | | | | LINE No. | | | | | |
|-----------|------------|----------|----------|----------|----------|---------------|---------------|----|---|----|---|
| YEAR CODE | MONTH CODE | DAY CODE | DAY CODE | DAY CODE | DAY CODE | LINE No. CODE | LINE No. CODE | | | | |
| 2013 | 3 | Jan. | A | 1 | 1 | 11 | B | 21 | M | 1 | A |
| 2014 | 4 | Feb. | B | 2 | 2 | 12 | C | 22 | N | 2 | B |
| 2015 | 5 | Mar. | C | 3 | 3 | 13 | D | 23 | P | 3 | C |
| 2016 | 6 | Apr. | D | 4 | 4 | 14 | E | 24 | Q | 4 | D |
| 2017 | 7 | May. | E | 5 | 5 | 15 | F | 25 | R | 5 | E |
| | | Jun. | F | 6 | 6 | 16 | G | 26 | S | 6 | F |
| | | Jul. | G | 7 | 7 | 17 | H | 27 | T | 7 | G |
| | | Aug. | H | 8 | 8 | 18 | J | 28 | U | 8 | H |
| | | Sep. | I | 9 | 9 | 19 | K | 29 | V | 9 | I |
| | | Oct. | J | 10 | A | 20 | L | 30 | W | 10 | J |
| | | Nov. | K | | | | | 31 | X | 11 | K |
| | | Dec. | L | | | | | | | | |



- NOTES
- 1 CO-PLANARITY IS WITHIN 0.08 mm.
 - 2 THE PLATING SPECIFICATION
CONTACT AREA : PALLADIUM NICKEL PLATING 0.75 μm MIN. + GOLD PLATING 0.05 μm MIN.
MOUNTING AREA : GOLD PLATING 0.05 μm MIN.
UNDERPLATING : NICKEL PLATING 2 μm MIN.
 - 3 2000 PCS PER REEL.
 - 4 CONNECTOR OPENING CONFIGURATION SATISFIES USB3.0 SPECIFICATIONS.
 - 5 SCRATCH MARK COULD BE MADE ON THE SURFACE OF REF NO.3 AND NO.4 DURING ASSEMBLY PROCESS, WHICH DOES NOT AFFECT THE PERFORMANCE. LEVEL OF PLATING BRIGHTNESS COULD VARY, WHICH DOSE NOT AFFECT THE PERFORMANCE.
 - 6 INDICATE THE LOT NO. WITH 4 DIGITS AT THE SPECIFIED POSITION.

Halogen-Free
Lead Free Process
RoHS Compliant

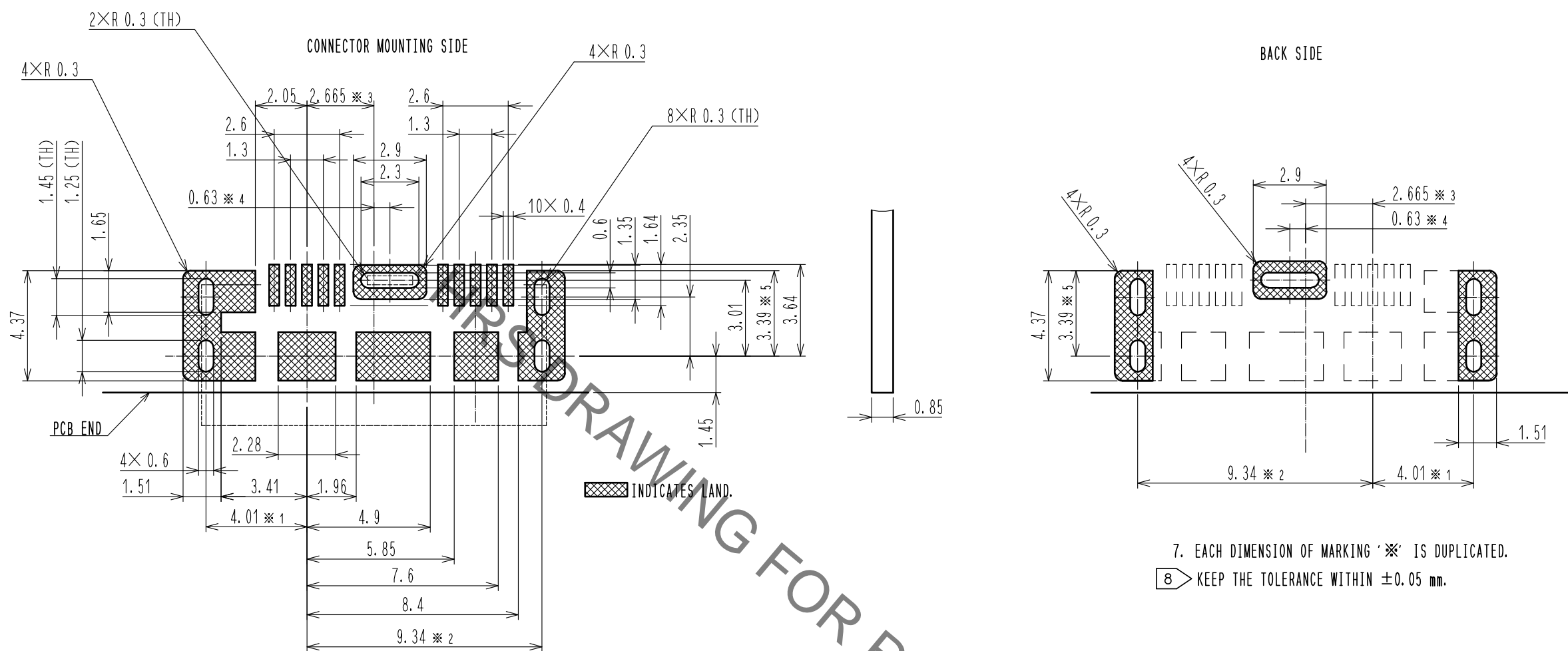
| NO. | MATERIAL | FINISH . REMARKS | NO. | MATERIAL | FINISH . REMARKS |
|-----|-----------------|-------------------------------------|-----|-----------------|-----------------------|
| 3 | STAINLESS STEEL | NICKEL PLATING 1 μm MIN., LUBRICANT | 6 | PE | |
| 2 | COPPER ALLOY | 2 | 5 | PS | |
| 1 | LCP | BLACK UL94V-0 | 4 | STAINLESS STEEL | TIN PLATING 1 μm MIN. |

| UNITS | SCALE | COUNT | DESCRIPTION OF REVISIONS | DESIGNED | CHECKED | DATE |
|-------|-------|-------|--------------------------|------------|------------|----------|
| mm | 5 : 1 | 1 | DIS-E-00001801 | YS. SAKODA | AH. KODAMA | 20181004 |

| APPROVED | CHECKED | DESIGNED | DRAWN | DRAWING NO. | PART NO. | CODE NO. |
|----------------|--------------|----------|-------------|------------------|----------------------|-----------------|
| NM. NISHIMATSU | KN. ICHIKAWA | TS. ITO | AK. AKIYAMA | EDC-128382-30-00 | ZX360D1-B-CN-10P<30> | CL242-0514-6-30 |

Jun.1.2021 Copyright 2021 HIROSE ELECTRIC CO., LTD. All Rights Reserved.
 In case of consideration for using Automotive equipment / device which demand high reliability, kindly contact our sales window correspondents.

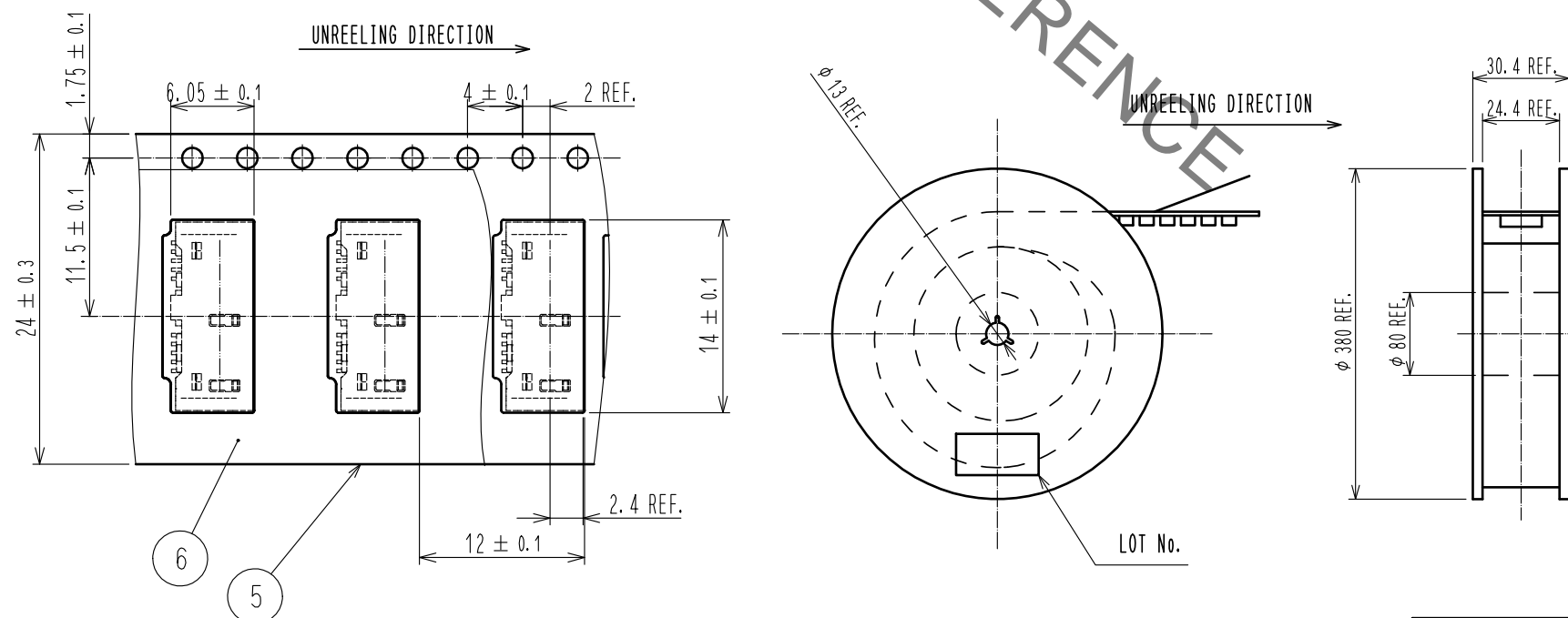
8 PCB LAYOUT FOR REFERENCE



7. EACH DIMENSION OF MARKING '※' IS DUPLICATED.

8 KEEP THE TOLERANCE WITHIN ±0.05 mm.

3 DRAWING FOR PACKAGING (FREE)



| | | |
|------------|-------------|----------------------|
| HRS | DRAWING NO. | EDC-128382-30-00 |
| | PART NO. | ZX360D1-B-CN-10P(30) |
| | CODE NO. | CL242-0514-6-30 |
| | | 2/2 |