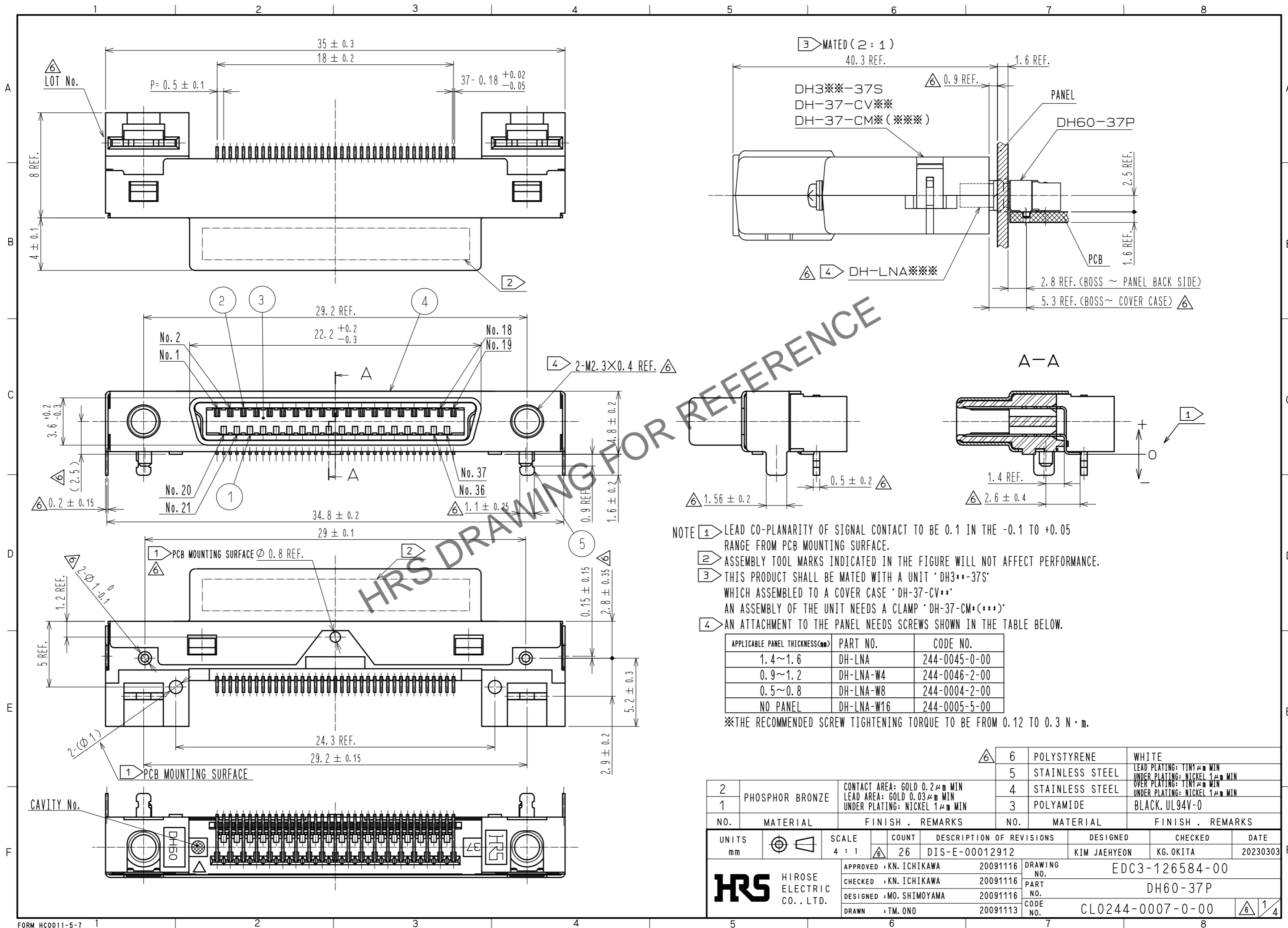


Feb.1.2025 Copyright 2025 HIROSE ELECTRIC CO., LTD. All Rights Reserved.
 In case of consideration for using Automotive equipment / device which demand high reliability, kindly contact our sales window correspondents.



- NOTE
- ① LEAD CO-PLANARITY OF SIGNAL CONTACT TO BE 0.1 IN THE -0.1 TO +0.05 RANGE FROM PCB MOUNTING SURFACE.
 - ② ASSEMBLY TOOL MARKS INDICATED IN THE FIGURE WILL NOT AFFECT PERFORMANCE.
 - ③ THIS PRODUCT SHALL BE MATED WITH A UNIT 'DH3**~37S' WHICH ASSEMBLED TO A COVER CASE 'DH-37-CV**'. AN ASSEMBLY OF THE UNIT NEEDS A CLAMP 'DH-37-CM*(***)'.
 - ④ AN ATTACHMENT TO THE PANEL NEEDS SCREWS SHOWN IN THE TABLE BELOW.

APPLICABLE PANEL THICKNESS(mm)	PART NO.	CODE NO.
1.4~1.6	DH-LNA	244-0045-0-00
0.9~1.2	DH-LNA-W4	244-0046-2-00
0.5~0.8	DH-LNA-W8	244-0004-2-00
NO PANEL	DH-LNA-W16	244-0005-5-00

※THE RECOMMENDED SCREW TIGHTENING TORQUE TO BE FROM 0.12 TO 0.3 N · m.

⑥	6	POLYSTYRENE	WHITE
	5	STAINLESS STEEL	LEAD PLATING: T1N1µm MIN UNDER PLATING: NICKEL 1µm MIN
	4	STAINLESS STEEL	OVER PLATING: T1N1µm MIN UNDER PLATING: NICKEL 1µm MIN
	3	POLYAMIDE	BLACK, UL94V-0

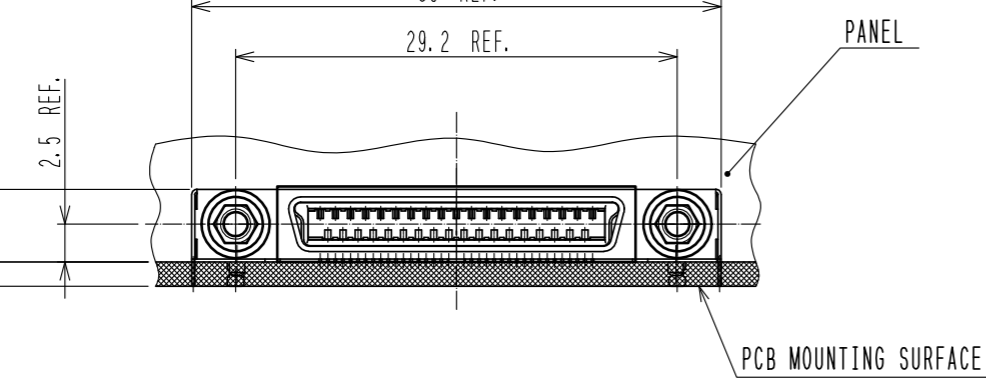
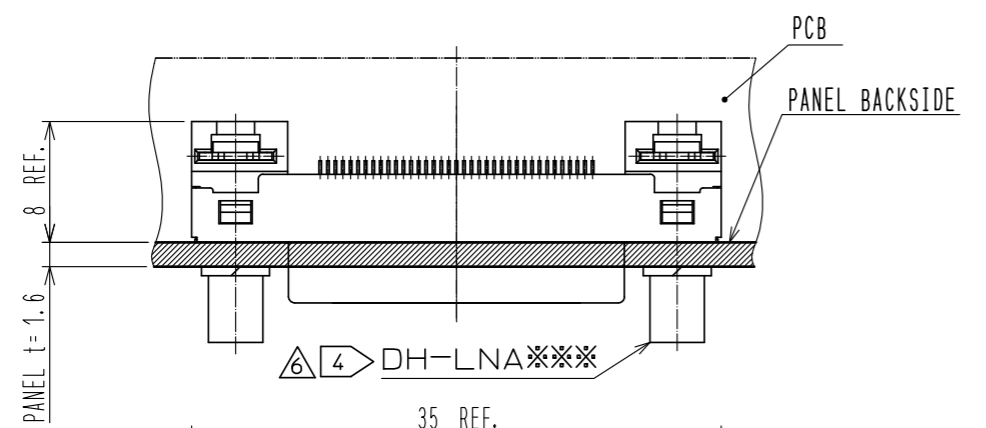
NO.	MATERIAL	FINISH . REMARKS	NO.	MATERIAL	FINISH . REMARKS
2	PHOSPHOR BRONZE	CONTACT AREA: GOLD 0.2µm MIN LEAD AREA: GOLD 0.03µm MIN UNDER PLATING: NICKEL 1µm MIN			
1					

UNITS	SCALE	COUNT	DESCRIPTION OF REVISIONS	DESIGNED	CHECKED	DATE
mm	4 : 1	26	DIS-E-00012912	KIM JAEHYEON	KG. OKITA	20230303
APPROVED : KN. ICHIKAWA 20091116			DRAWING NO.		EDC3-126584-00	
CHECKED : KN. ICHIKAWA 20091116			PART NO.		DH60-37P	
DESIGNED : MO. SHIMOYAMA 20091116			CODE NO.		CL0244-0007-0-00	
DRAWN : TM. ONO 20091113						

Feb.1.2025 Copyright 2025 HIROSE ELECTRIC CO., LTD. All Rights Reserved.
 In case of consideration for using Automotive equipment / device which demand high reliability, kindly contact our sales window correspondents.

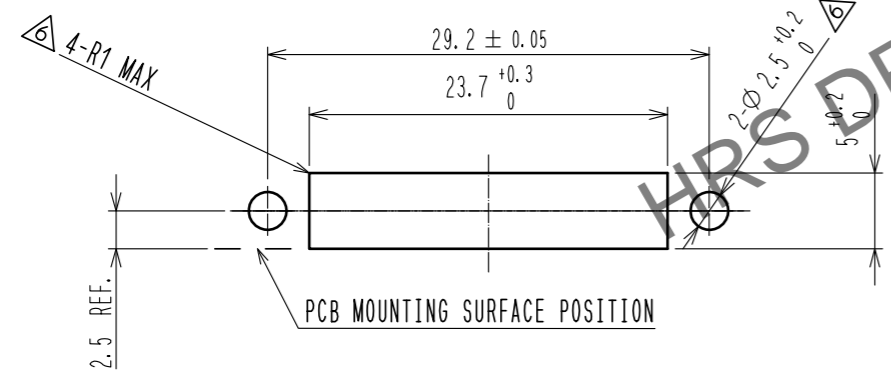
1 2 3 4 5 6 7 8

CONNECTOR MOUNTED ON PCB (2:1)
 (FOR EXAMPLE, PANEL THICKNESS IS 1.6mm)

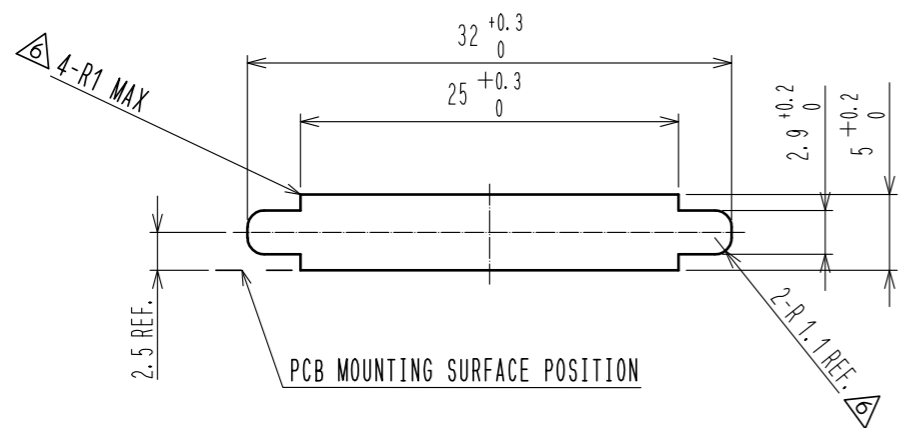


PANEL CUTOUT FOR REFERENCE (2:1)
 (THE DIMENSION IS SPECIFIED BASED ON THE CENTER OF THE CONNECTOR INTERFACE.)

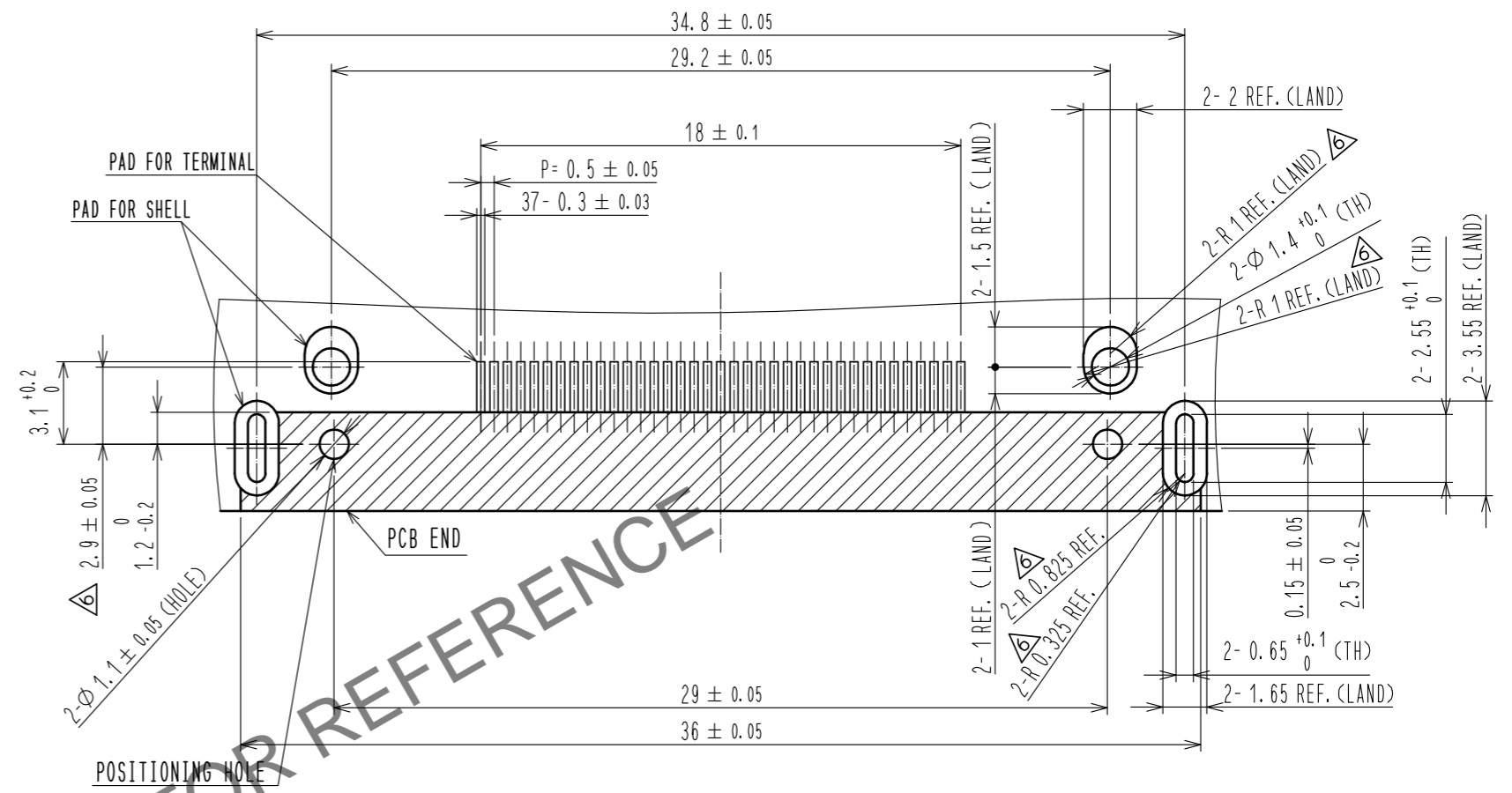
DH-LNA (CL244-0045-0-00) IS USED.



DH-LNA-W4 (CL244-0046-2-00)
 DH-LNA-W8 (CL244-0004-2-00) IS USED.

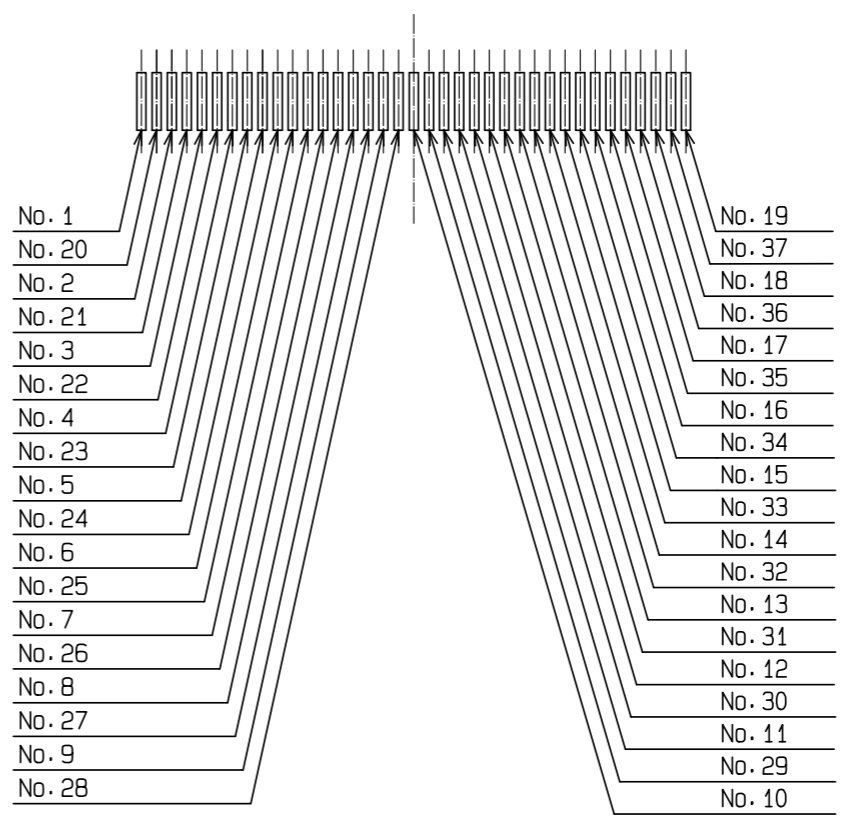


PCB LAYOUT FOR REFERENCE (MOUNTING SURFACE SIDE)



▨ : PATTERN PROHIBITION AREA

TERMINAL No. CHART



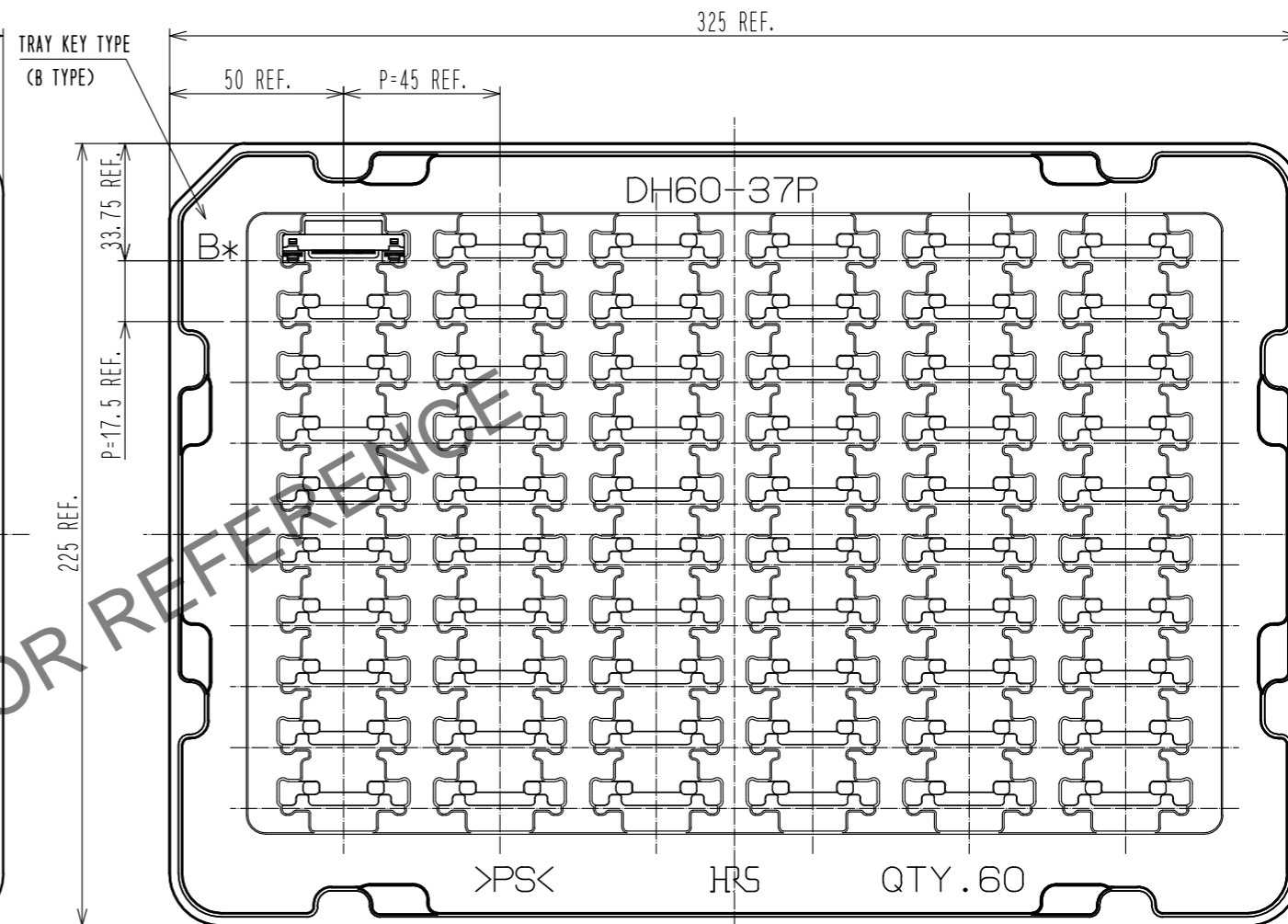
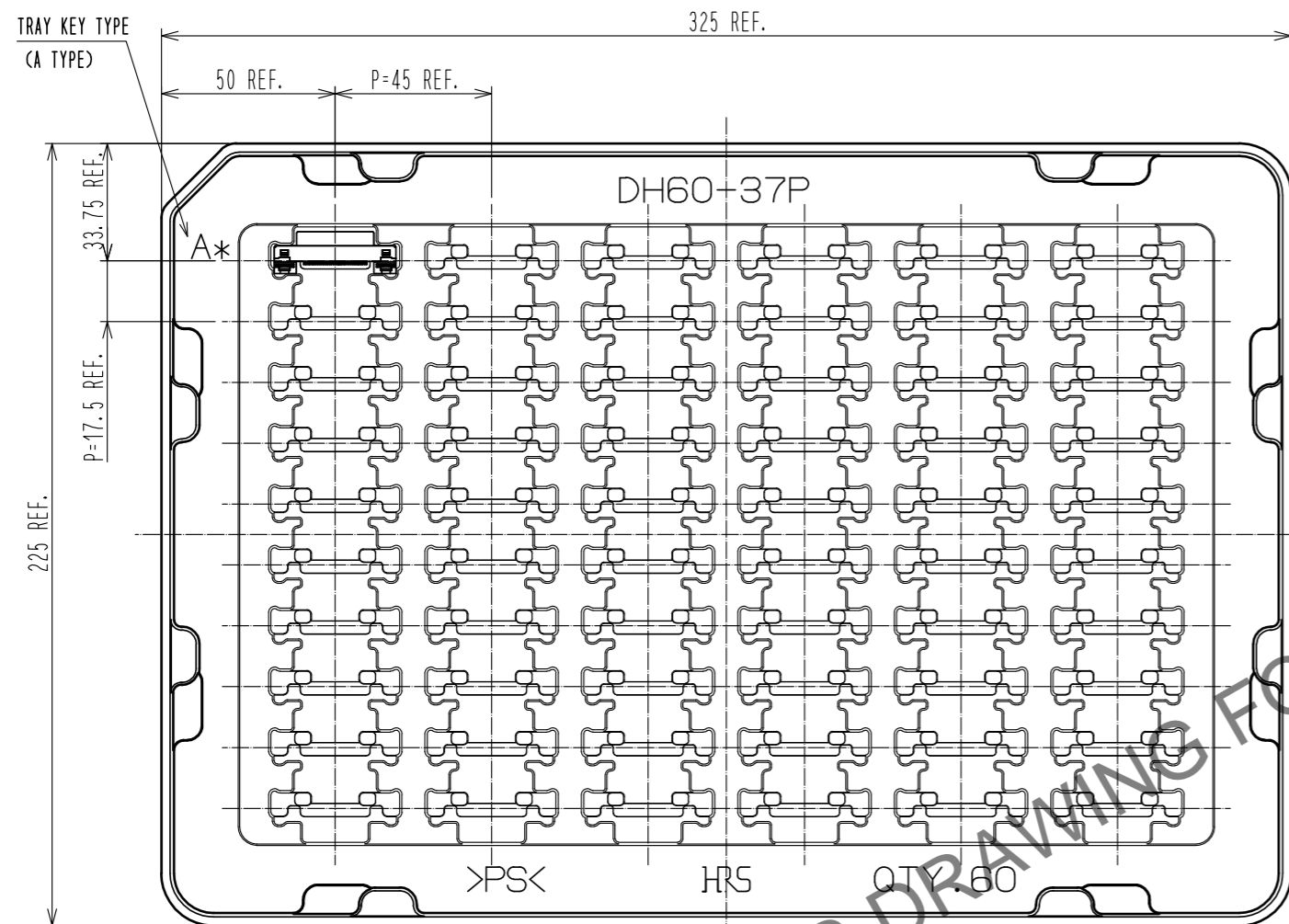
HRS	DRAWING NO.	EDC3-126584-00
	PART NO.	DH60-37P
	CODE NO.	CL0244-0007-0-00
		2/4

A
B
C
D
E
F

A
B
C
D
E
F

Feb.1.2025 Copyright 2025 HIROSE ELECTRIC CO., LTD. All Rights Reserved.
In case of consideration for using Automotive equipment / device which demand high reliability, kindly contact our sales window correspondents.

DRAWING FOR PACKING (1:2)



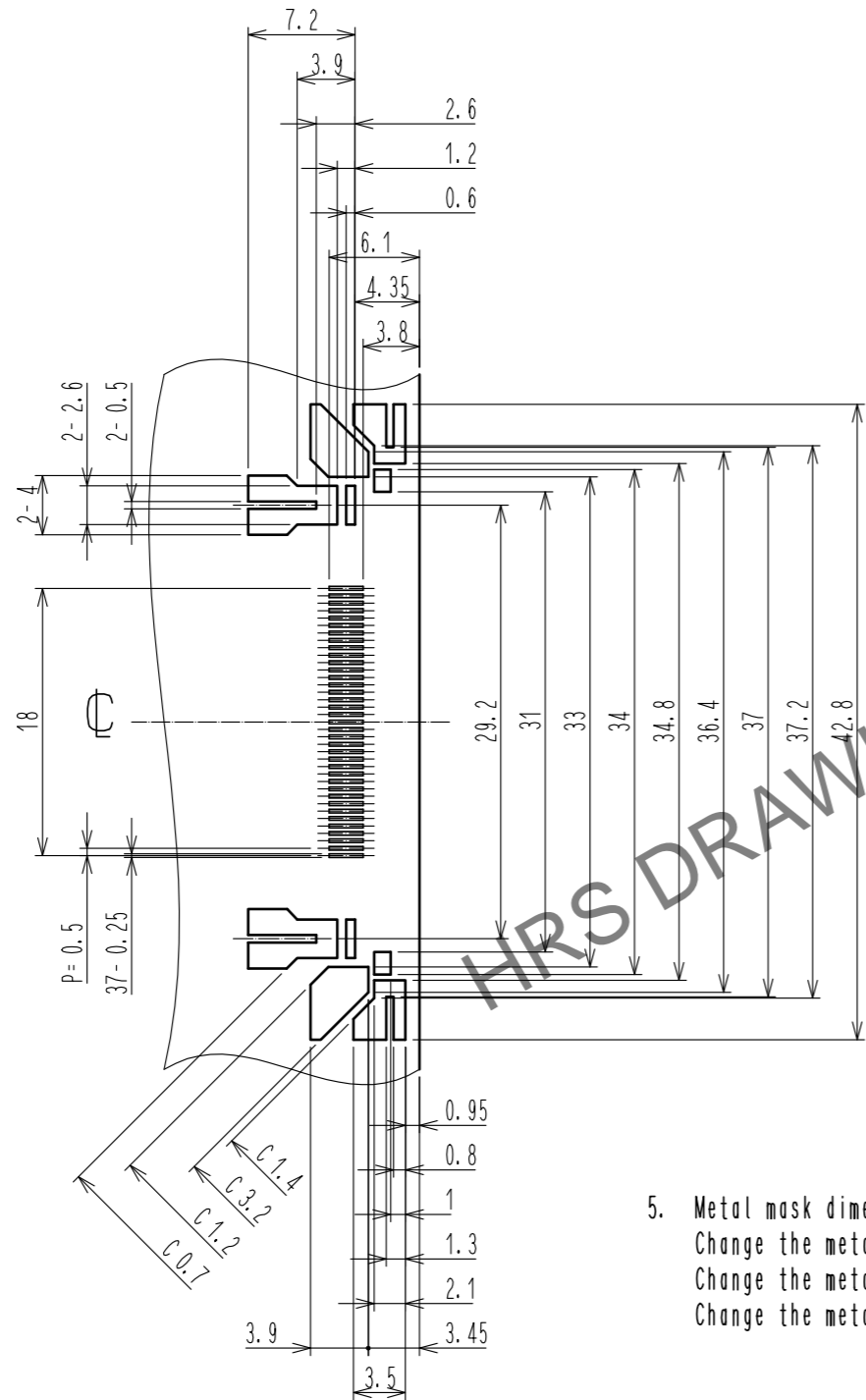
※TRAYS, A TYPE AND B TYPE, ARE PILED UP ALTERNATELY.

6

HRS	DRAWING NO.	EDC3-126584-00
	PART NO.	DH60-37P
	CODE NO.	CL0244-0007-0-00
		3/4

Feb.1.2025 Copyright 2025 HIROSE ELECTRIC CO., LTD. All Rights Reserved.
 In case of consideration for using Automotive equipment / device which demand high reliability, kindly contact our sales window correspondents.

REFERENCE METAL MASK LAYOUT(2:1)
 (t=0.15)



5. Metal mask dimensions of the drawings described, are reference dimensions for 0.15 mm thickness metal mask.
 Change the metal mask dimensions by thickness of the metal mask, thickness of PCB, component of solder paste and mounting conditions.
 Change the metal mask dimensions in case of mounting DH***P in parallel.
 Change the metal mask dimensions, if there are other mounting parts or implementation pattern around the portion of mounting position of DH***P.

GENERAL TOLERANCE IS ± 0.05

HRS	DRAWING NO.	EDC3-126584-00
	PART NO.	DH60-37P
	CODE NO.	CL0244-0007-0-00
		4/4