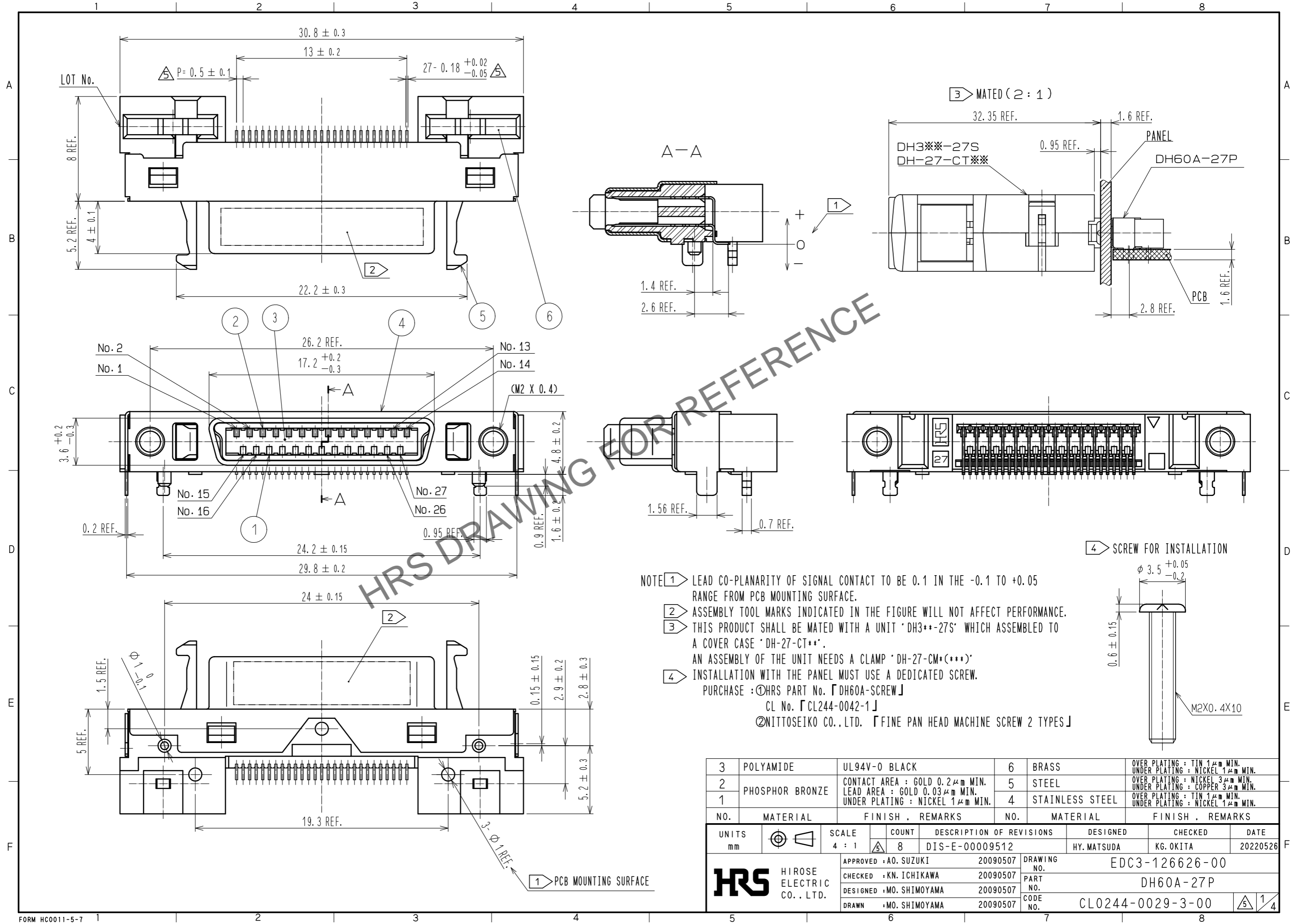


Feb.1.2025 Copyright 2025 HIROSE ELECTRIC CO., LTD. All Rights Reserved.  
In case of consideration for using Automotive equipment / device which demand high reliability, kindly contact our sales window correspondents.

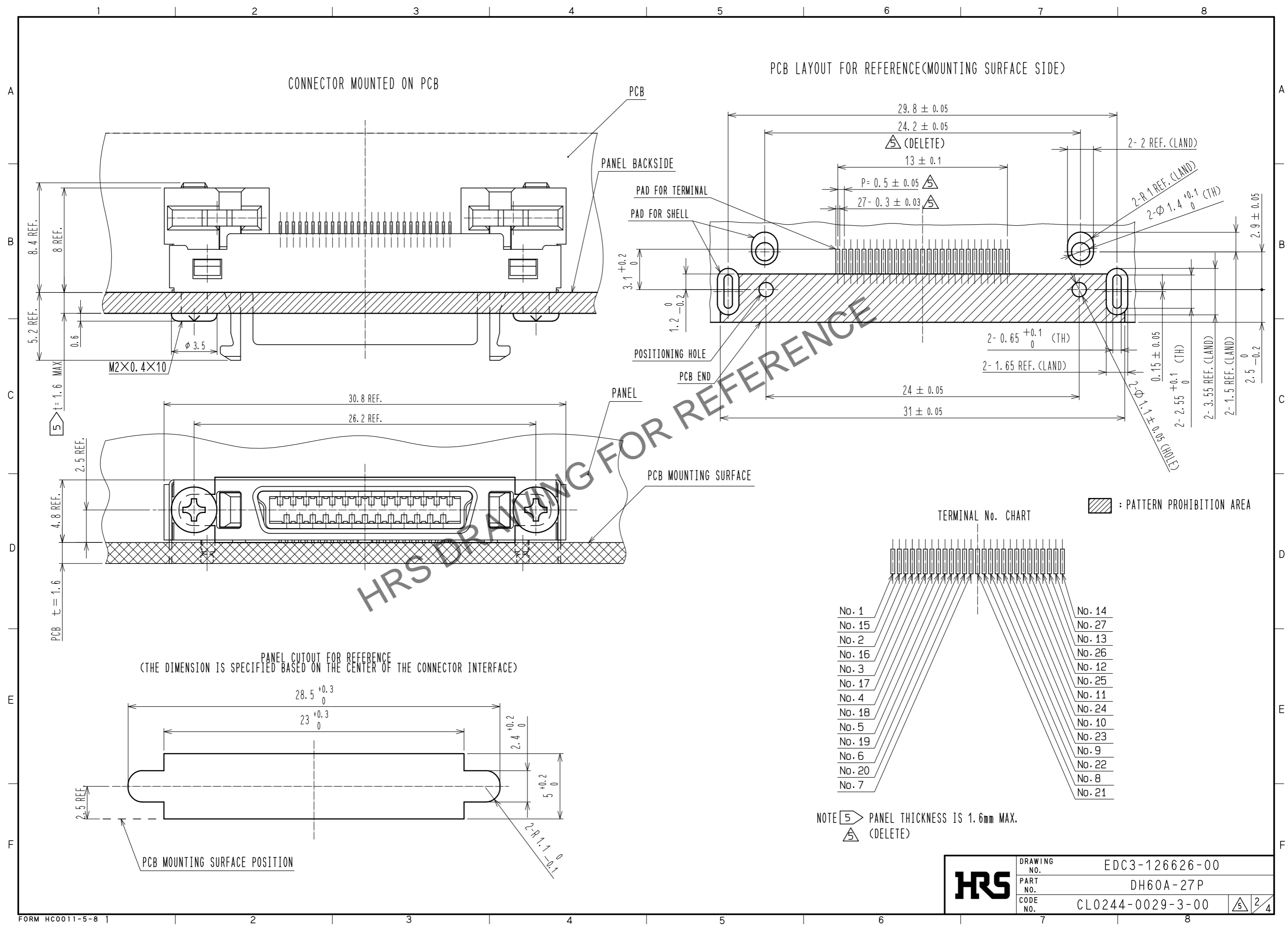


**NOTE**

- LEAD CO-PLANARITY OF SIGNAL CONTACT TO BE 0.1 IN THE -0.1 TO +0.05 RANGE FROM PCB MOUNTING SURFACE.
- ASSEMBLY TOOL MARKS INDICATED IN THE FIGURE WILL NOT AFFECT PERFORMANCE.
- THIS PRODUCT SHALL BE MATED WITH A UNIT 'DH3\*\*-27S' WHICH ASSEMBLED TO A COVER CASE 'DH-27-CT\*\*'. AN ASSEMBLY OF THE UNIT NEEDS A CLAMP 'DH-27-CM\*(\*\*\*)'.
- INSTALLATION WITH THE PANEL MUST USE A DEDICATED SCREW.  
PURCHASE : ①HRS PART No. 「DH60A-SCREW」  
CL No. 「CL244-0042-1」  
②NITTOSEIKO CO., LTD. 「FINE PAN HEAD MACHINE SCREW 2 TYPES」

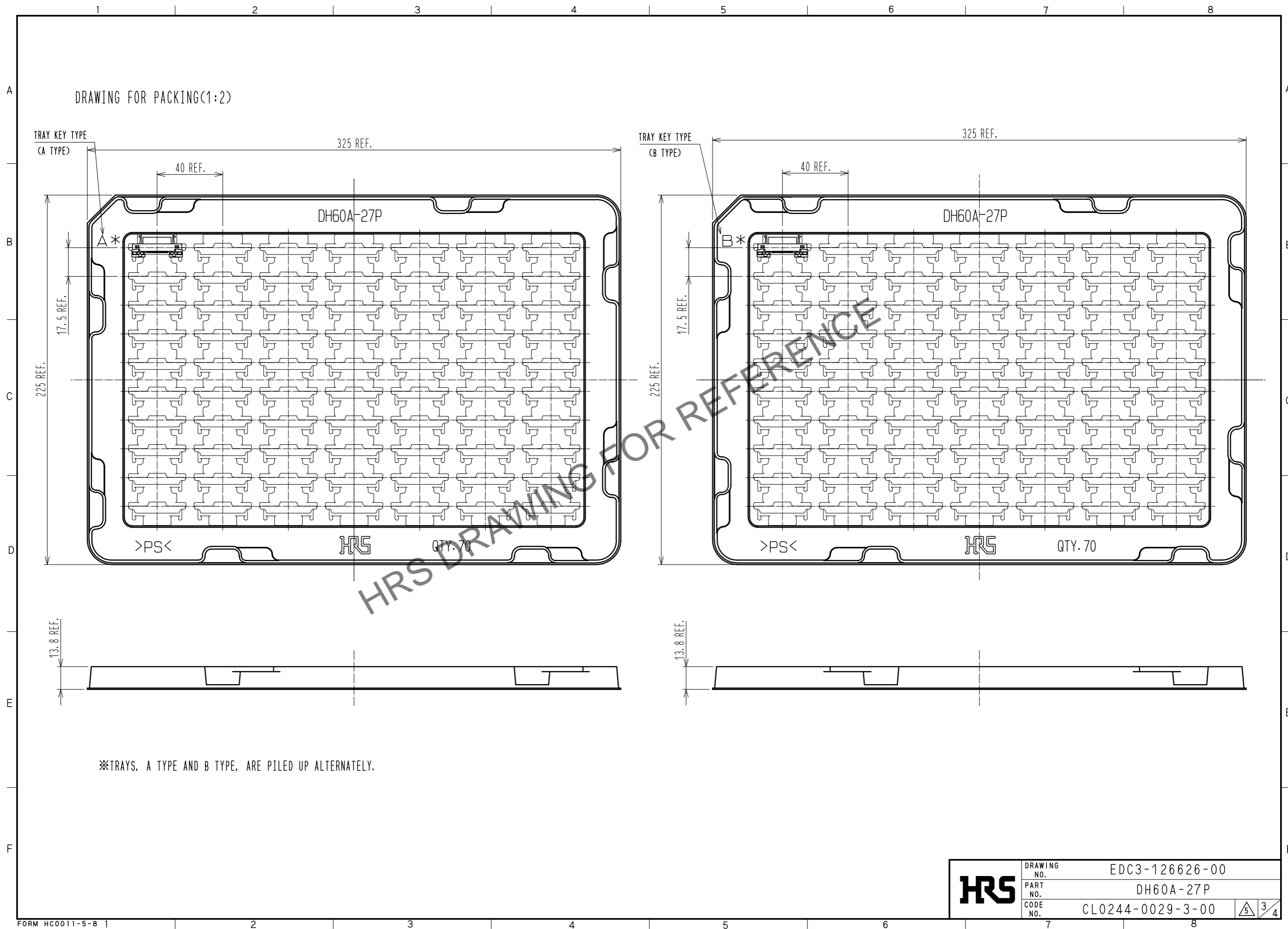
3	POLYAMIDE	UL94V-0 BLACK	6	BRASS	OVER PLATING : TIN 1 $\mu$ m MIN. UNDER PLATING : NICKEL 1 $\mu$ m MIN.
2	PHOSPHOR BRONZE	CONTACT AREA : GOLD 0.2 $\mu$ m MIN. LEAD AREA : GOLD 0.03 $\mu$ m MIN. UNDER PLATING : NICKEL 1 $\mu$ m MIN.	5	STEEL	OVER PLATING : NICKEL 3 $\mu$ m MIN. UNDER PLATING : COPPER 3 $\mu$ m MIN.
1			4	STAINLESS STEEL	OVER PLATING : TIN 1 $\mu$ m MIN. UNDER PLATING : NICKEL 1 $\mu$ m MIN.
NO.	MATERIAL	FINISH . REMARKS	NO.	MATERIAL	FINISH . REMARKS
UNITS mm		SCALE 4 : 1	COUNT 8	DESCRIPTION OF REVISIONS DIS-E-00009512	DESIGNED HY. MATSUDA
					CHECKED KG. OKITA
					DATE 20220526
APPROVED : A0. SUZUKI 20090507			DRAWING NO. EDC3-126626-00		
CHECKED : KN. ICHIKAWA 20090507			PART NO. DH60A-27P		
DESIGNED : MO. SHIMOYAMA 20090507			CODE NO. CL0244-0029-3-00		
DRAWN : MO. SHIMOYAMA 20090507			1/4		

Feb.1.2025 Copyright 2025 HIROSE ELECTRIC CO., LTD. All Rights Reserved.  
 In case of consideration for using Automotive equipment / device which demand high reliability, kindly contact our sales window correspondents.



<b>HRS</b>	DRAWING NO.	EDC3-126626-00
	PART NO.	DH60A-27P
	CODE NO.	CLO244-0029-3-00
		$\triangle$ 2/4

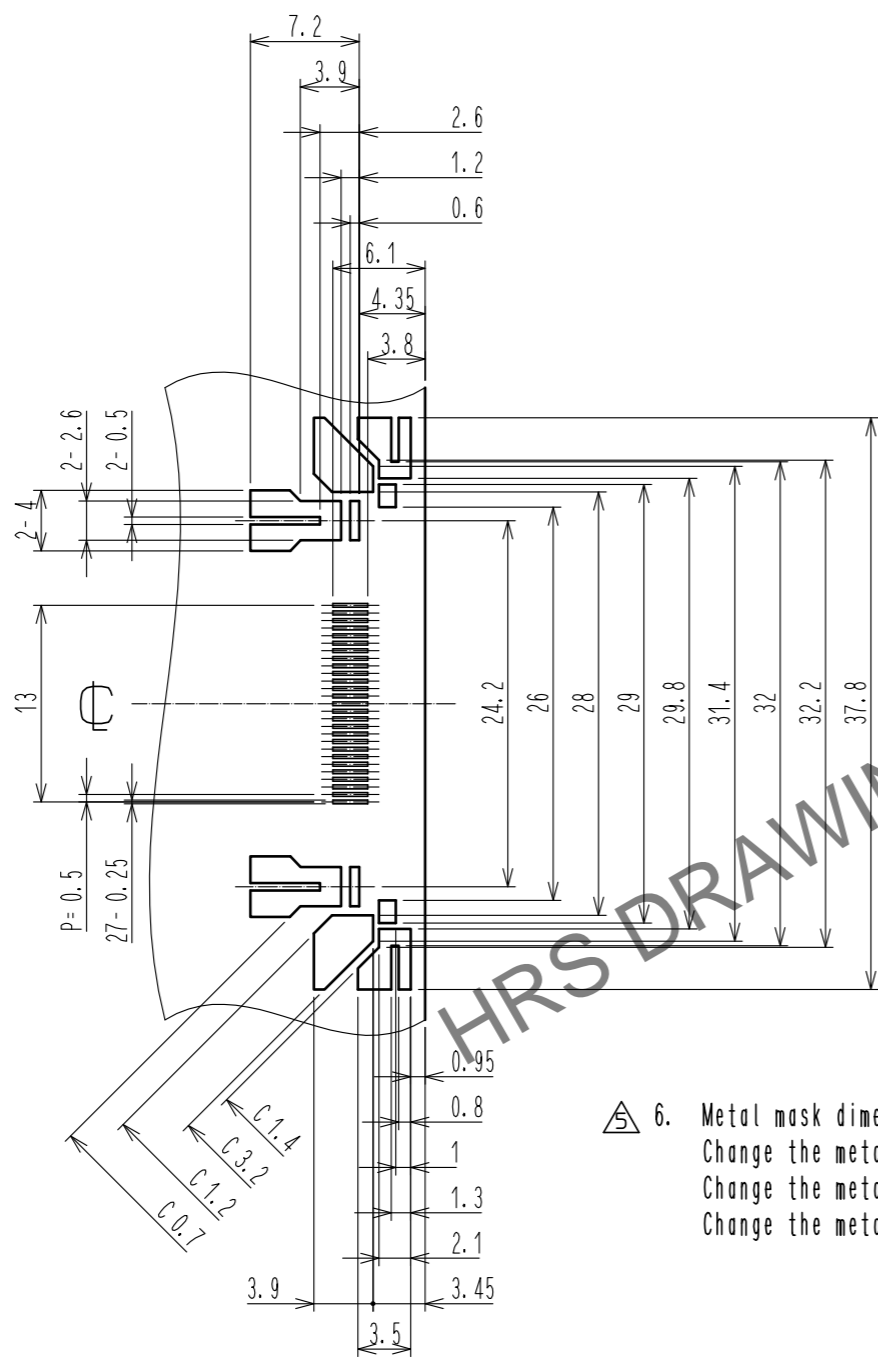
Feb.1.2025 Copyright 2025 HIROSE ELECTRIC CO., LTD. All Rights Reserved.  
In case of consideration for using Automotive equipment / device which demand high reliability, kindly contact our sales window correspondents.



<b>HRS</b>	DRAWING NO.	EDC3-126626-00
	PART NO.	DH60A-27P
	CODE NO.	CL0244-0029-3-00
		3/4

Feb.1.2025 Copyright 2025 HIROSE ELECTRIC CO., LTD. All Rights Reserved.  
 In case of consideration for using Automotive equipment / device which demand high reliability, kindly contact our sales window correspondents.

△ REFERENCE METAL MASK LAYOUT(2:1)  
 (t=0.15)



GENERAL TOLERANCE IS  $\pm 0.05$

△ 6. Metal mask dimensions of the drawings described, are reference dimensions for 0.15 mm thickness metal mask.  
 Change the metal mask dimensions by thickness of the metal mask, thickness of PCB, component of solder paste and mounting conditions.  
 Change the metal mask dimensions in case of mounting DH\*\*-\*P in parallel.  
 Change the metal mask dimensions, if there are other mounting parts or implementation pattern around the portion of mounting position of DH\*\*-\*P.

HRS DRAWING FOR REFERENCE

<b>HRS</b>	DRAWING NO.	EDC3-126626-00
	PART NO.	DH60A-27P
	CODE NO.	CL0244-0029-3-00
		△ 4/4