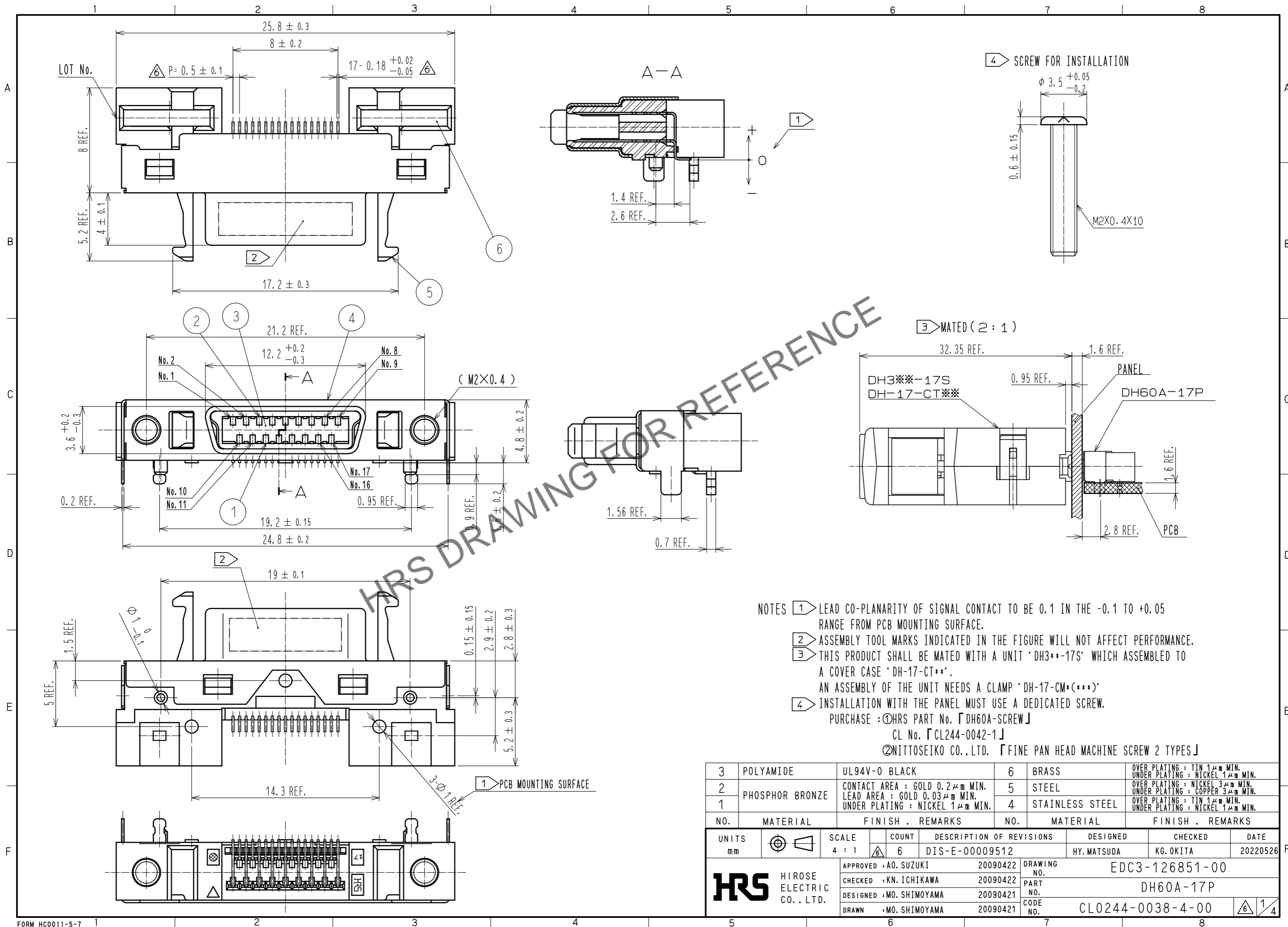


Mar.1.2025 Copyright 2025 HIROSE ELECTRIC CO., LTD. All Rights Reserved.
In case of consideration for using Automotive equipment / device which demand high reliability, kindly contact our sales window correspondents.

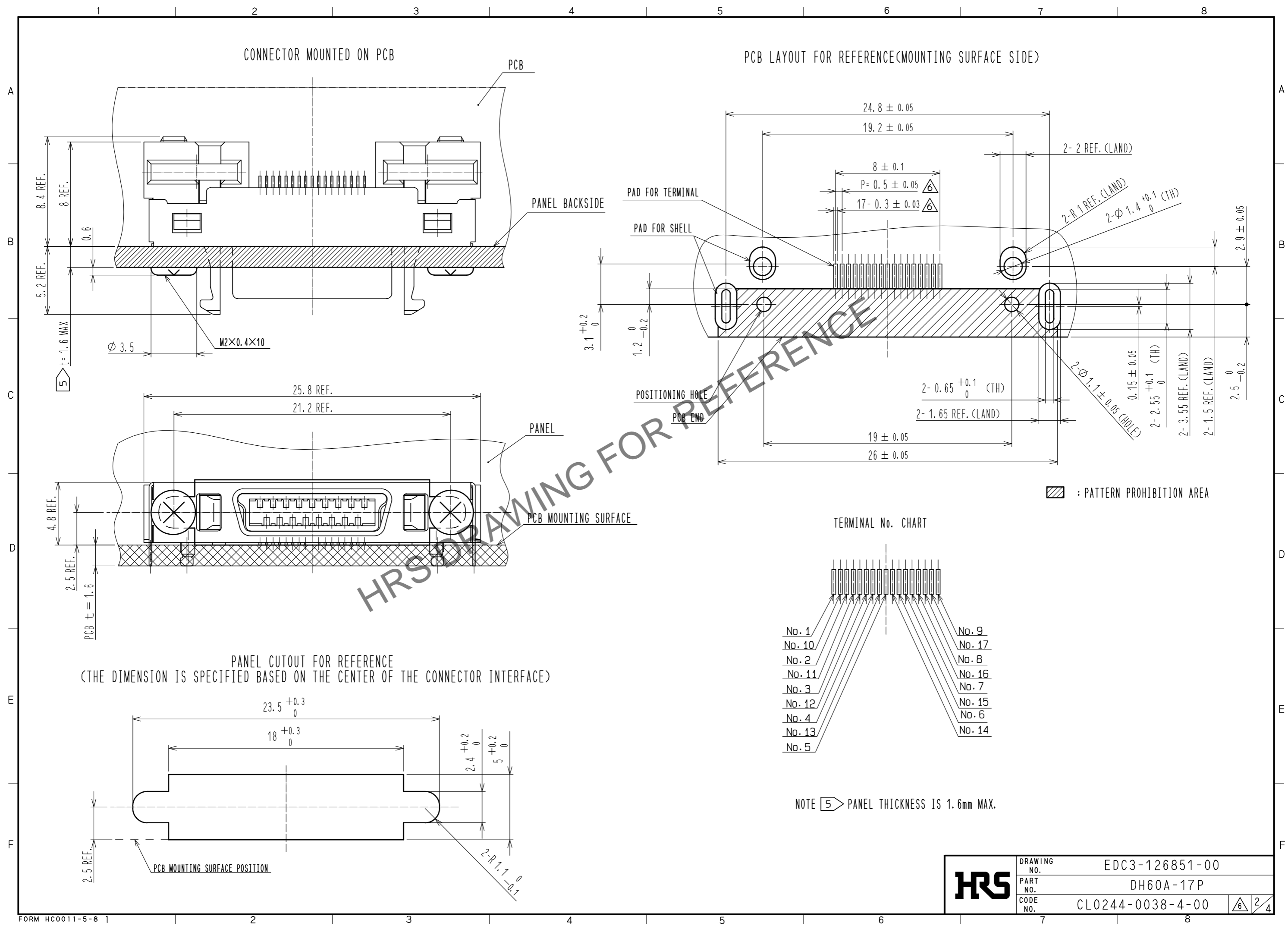


HRS DRAWING FOR REFERENCE

- NOTES
- ① LEAD CO-PLANARITY OF SIGNAL CONTACT TO BE 0.1 IN THE -0.1 TO +0.05 RANGE FROM PCB MOUNTING SURFACE.
 - ② ASSEMBLY TOOL MARKS INDICATED IN THE FIGURE WILL NOT AFFECT PERFORMANCE.
 - ③ THIS PRODUCT SHALL BE MATED WITH A UNIT 'DH3+-17S' WHICH ASSEMBLED TO A COVER CASE 'DH-17-CT**'.
AN ASSEMBLY OF THE UNIT NEEDS A CLAMP 'DH-17-CM*(***)'
 - ④ INSTALLATION WITH THE PANEL MUST USE A DEDICATED SCREW.
PURCHASE : ①HRS PART No. 「DH60A-SCREW」
CL No. 「CL244-0042-1」
②NITTOSEIKO CO.,LTD. 「FINE PAN HEAD MACHINE SCREW 2 TYPES」

3	POLYAMIDE	UL94V-0 BLACK	6	BRASS	OVER PLATING : TIN 1 μ m MIN. UNDER PLATING : NICKEL 1 μ m MIN.		
2	PHOSPHOR BRONZE	CONTACT AREA : GOLD 0.2 μ m MIN. LEAD AREA : GOLD 0.03 μ m MIN. UNDER PLATING : NICKEL 1 μ m MIN.	5	STEEL	OVER PLATING : NICKEL 3 μ m MIN. UNDER PLATING : COPPER 3 μ m MIN.		
1			4	STAINLESS STEEL	OVER PLATING : TIN 1 μ m MIN. UNDER PLATING : NICKEL 1 μ m MIN.		
NO.	MATERIAL	FINISH , REMARKS	NO.	MATERIAL	FINISH , REMARKS		
UNITS	\odot \triangleleft	SCALE	COUNT	DESCRIPTION OF REVISIONS	DESIGNED	CHECKED	DATE
mm		4 : 1	⑥ 6	DIS-E-00009512	HY. MATSUDA	KG. OKITA	20220526
HRS HIROSE ELECTRIC CO., LTD.		APPROVED : AO. SUZUKI	20090422	DRAWING NO. EDC3-126851-00			
		CHECKED : KN. ICHIKAWA	20090422	PART NO. DH60A-17P			
		DESIGNED : MO. SHIMOYAMA	20090421	CODE NO. CL0244-0038-4-00			
		DRAWN : MO. SHIMOYAMA	20090421				

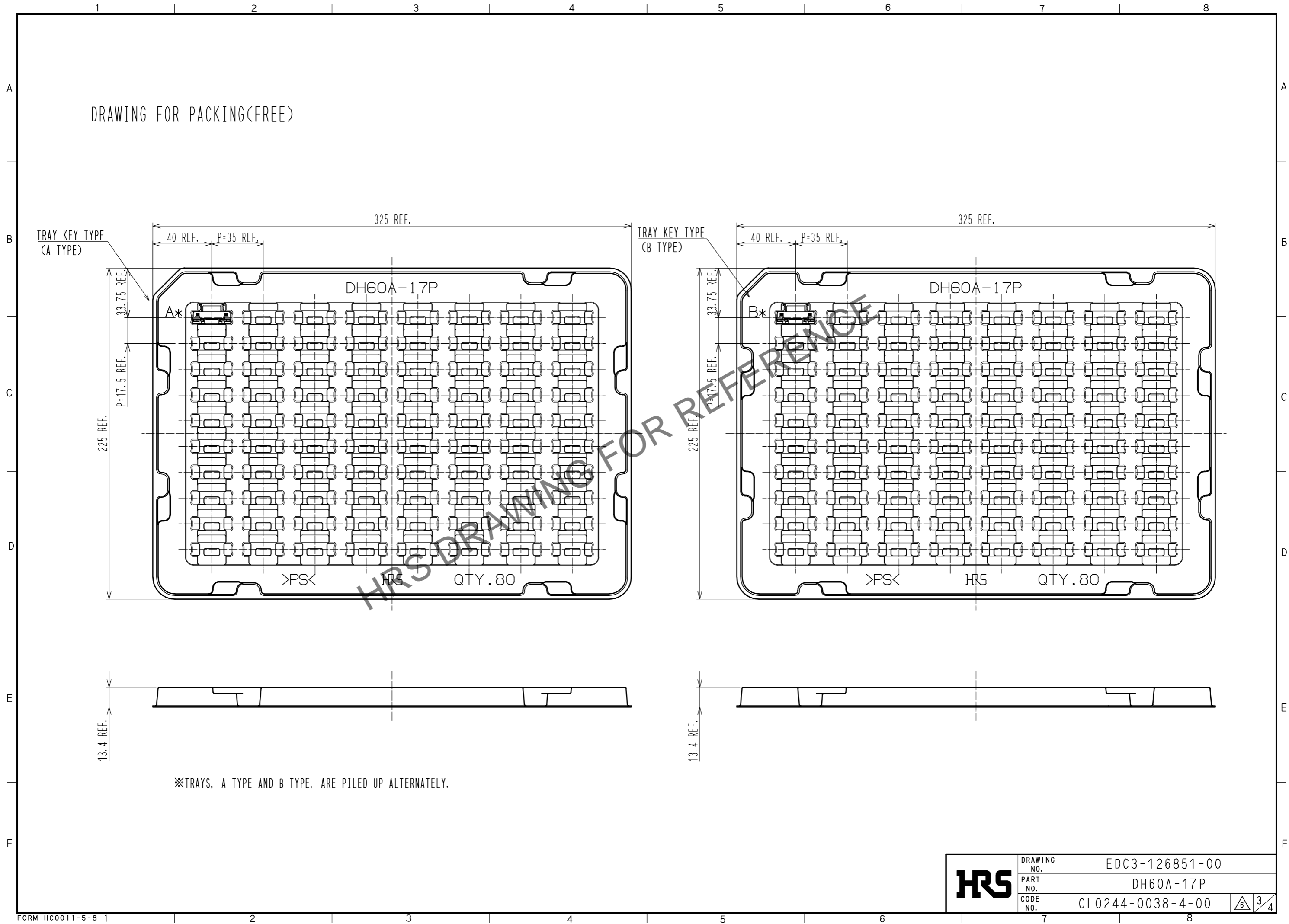
Mar.1.2025 Copyright 2025 HIROSE ELECTRIC CO., LTD. All Rights Reserved.
 In case of consideration for using Automotive equipment / device which demand high reliability, kindly contact our sales window correspondents.



HRS	DRAWING NO.	EDC3-126851-00
	PART NO.	DH60A-17P
	CODE NO.	CLO244-0038-4-00
		$\triangle 6$ 2/4

Mar.1.2025 Copyright 2025 HIROSE ELECTRIC CO., LTD. All Rights Reserved.
In case of consideration for using Automotive equipment / device which demand high reliability, kindly contact our sales window correspondents.

DRAWING FOR PACKING(FREE)

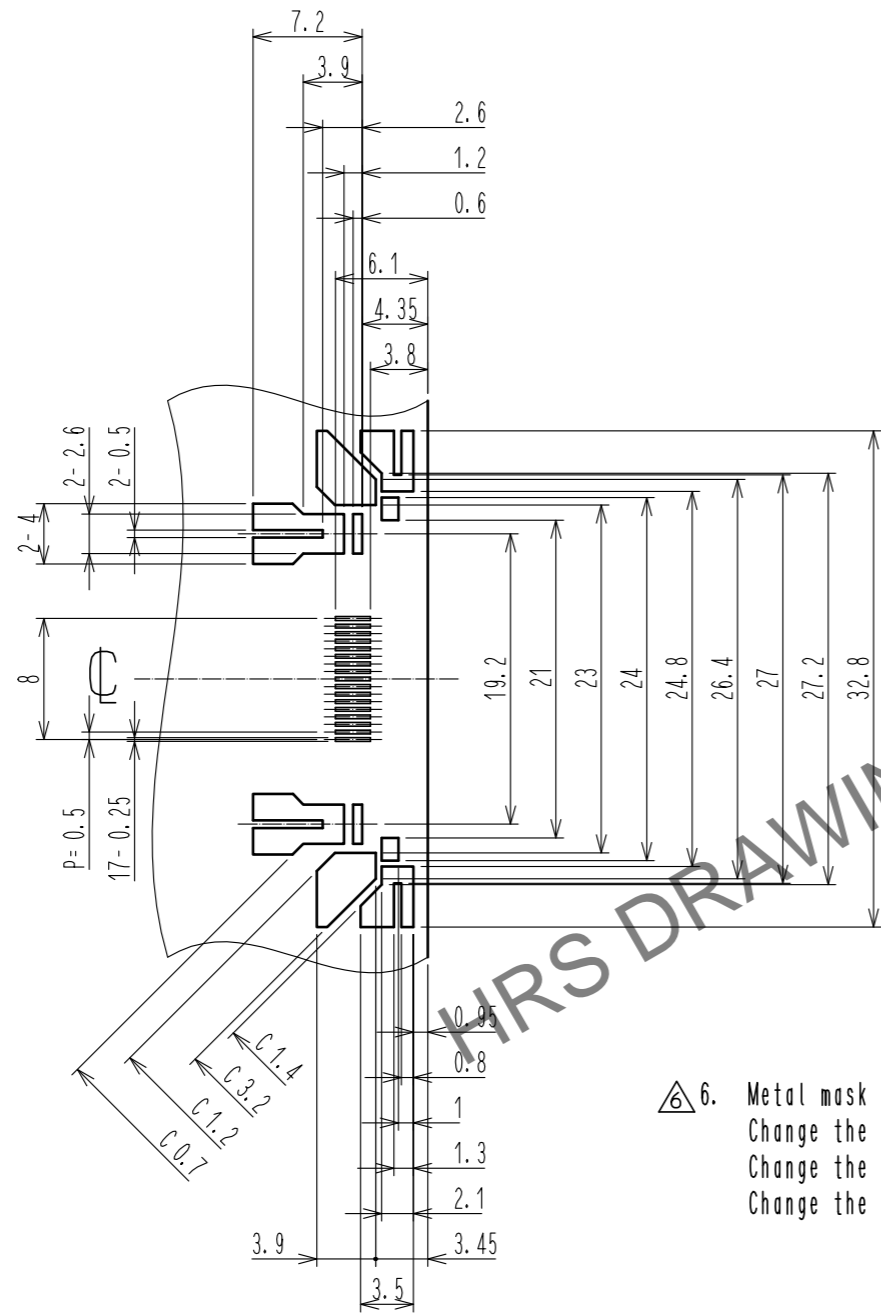


※TRAYS. A TYPE AND B TYPE. ARE PILED UP ALTERNATELY.

HRS	DRAWING NO.	EDC3-126851-00
	PART NO.	DH60A-17P
	CODE NO.	CL0244-0038-4-00
		3/4

Mar.1.2025 Copyright 2025 HIROSE ELECTRIC CO., LTD. All Rights Reserved.
In case of consideration for using Automotive equipment / device which demand high reliability, kindly contact our sales window correspondents.

△ REFERENCE METAL MASK LAYOUT(2:1)
(t=0.15)



GENERAL TOLERANCE IS ± 0.05

- △ 6. Metal mask dimensions of the drawings described, are reference dimensions for 0.15 mm thickness metal mask.
Change the metal mask dimensions by thickness of the metal mask, thickness of PCB, component of solder paste and mounting conditions.
Change the metal mask dimensions in case of mounting DH**-**P in parallel.
Change the metal mask dimensions, if there are other mounting parts or implementation pattern around the portion of mounting position of DH**-**P.

HRS	DRAWING NO.	EDC3-126851-00
	PART NO.	DH60A-17P
	CODE NO.	CL0244-0038-4-00

△ 4/4