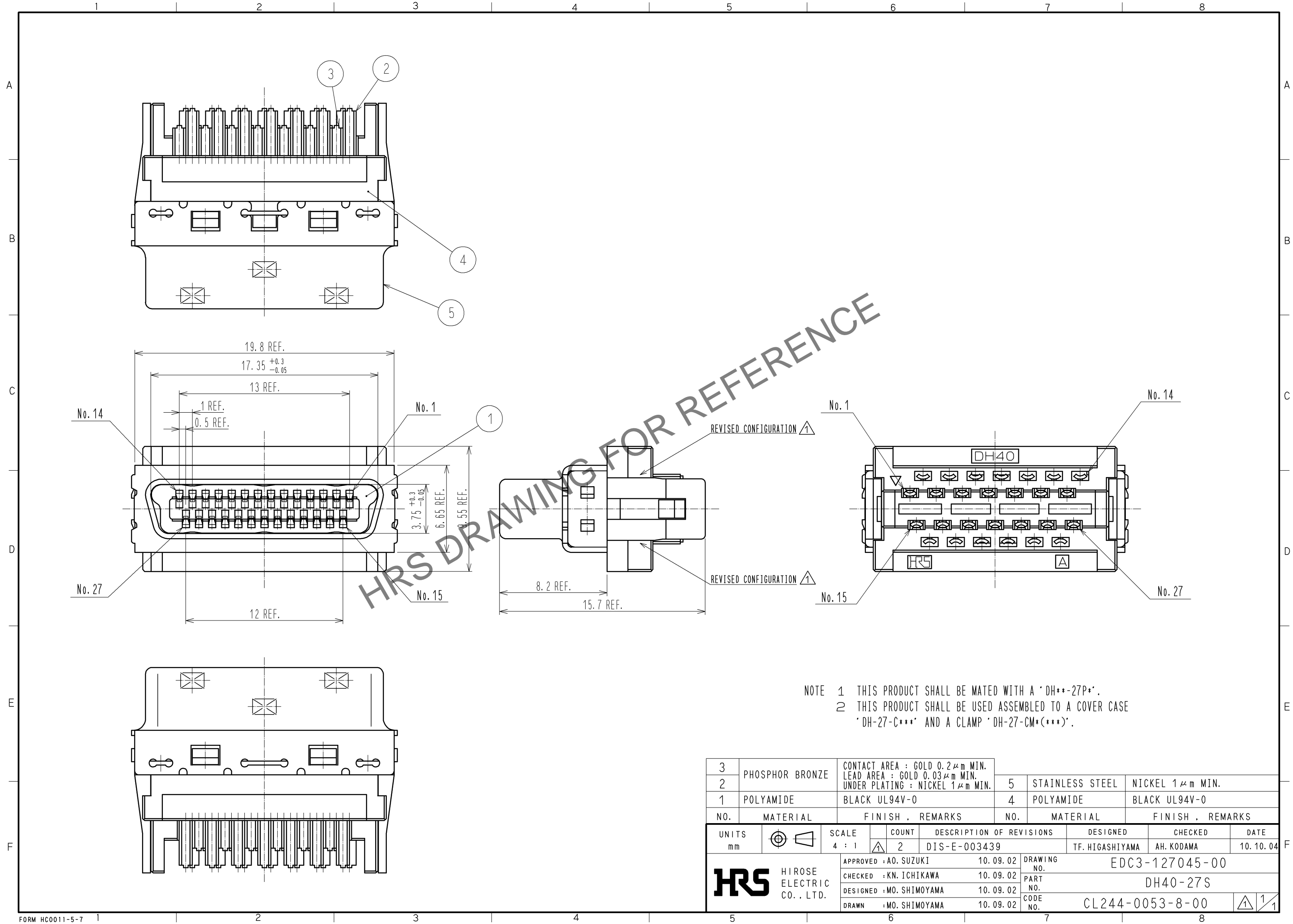


Feb.1.2025 Copyright 2025 HIROSE ELECTRIC CO., LTD. All Rights Reserved.  
In case of consideration for using Automotive equipment / device which demand high reliability, kindly contact our sales window correspondents.



NOTE 1 THIS PRODUCT SHALL BE MATED WITH A 'DH\*\*-27P\*'.  
2 THIS PRODUCT SHALL BE USED ASSEMBLED TO A COVER CASE 'DH-27-C\*\*\*' AND A CLAMP 'DH-27-CM\*(\*\*\*)'.

3	PHOSPHOR BRONZE	CONTACT AREA : GOLD 0.2 μm MIN. LEAD AREA : GOLD 0.03 μm MIN. UNDER PLATING : NICKEL 1 μm MIN.	5	STAINLESS STEEL	NICKEL 1 μm MIN.
2			4	POLYAMIDE	BLACK UL94V-0
1	POLYAMIDE	BLACK UL94V-0			
NO.	MATERIAL	FINISH . REMARKS	NO.	MATERIAL	FINISH . REMARKS
UNITS		SCALE	COUNT	DESCRIPTION OF REVISIONS	
mm		4 : 1	2	DIS-E-003439	
DESIGNED			DESIGNED	CHECKED	
TF. HIGASHIYAMA			TF. HIGASHIYAMA	AH. KODAMA	
DATE			DATE		
10.10.04			10.10.04		
APPROVED : A0. SUZUKI			10.09.02	DRAWING NO.	
CHECKED : KN. ICHIKAWA			10.09.02	EDC3-127045-00	
DESIGNED : MO. SHIMOYAMA			10.09.02	PART NO.	
DRAWN : MO. SHIMOYAMA			10.09.02	DH40-27S	
HRS HIROSE ELECTRIC CO., LTD.			CODE NO.		
			CL244-0053-8-00		
			1/1		