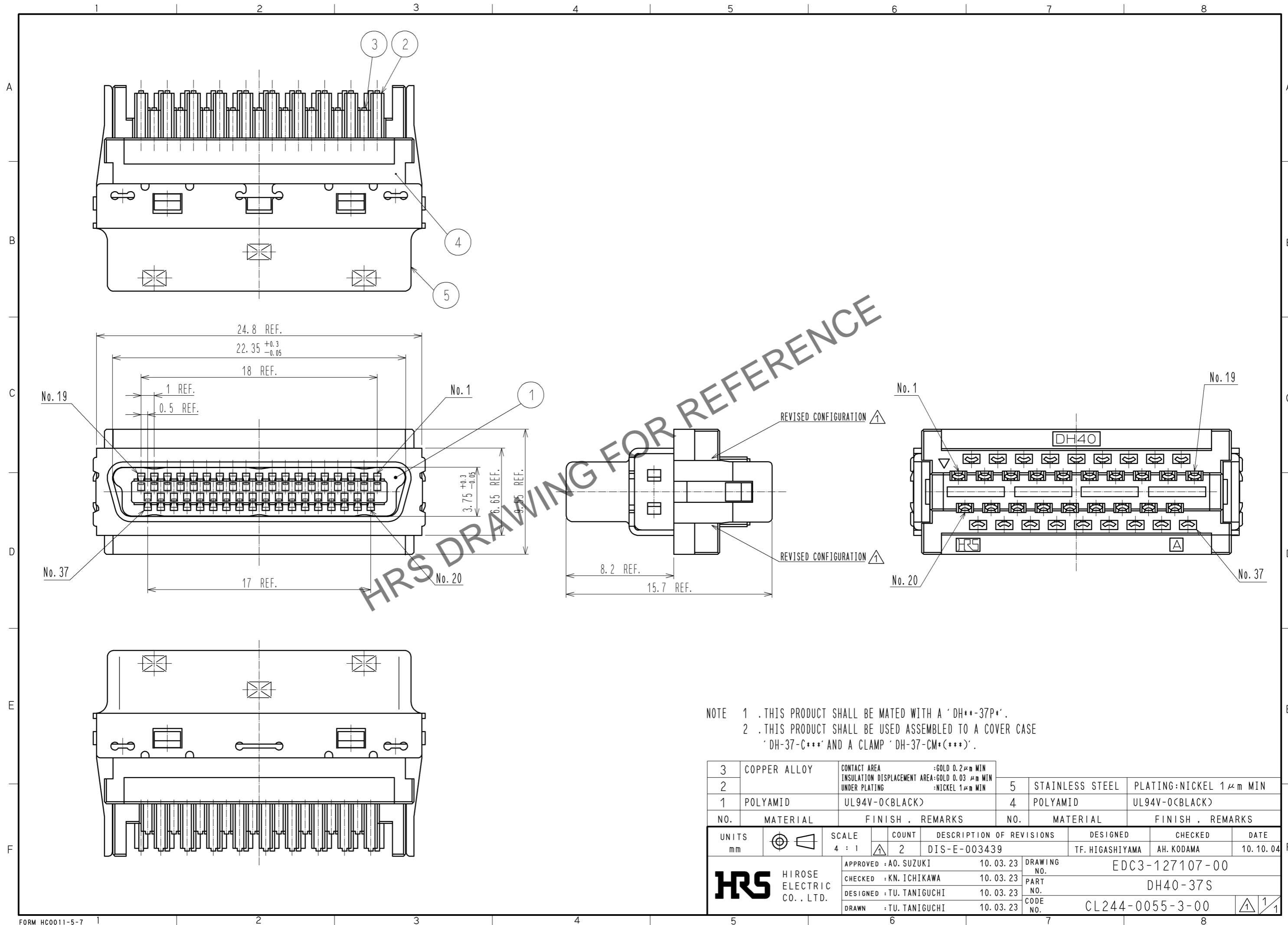


Feb.1.2025 Copyright 2025 HIROSE ELECTRIC CO., LTD. All Rights Reserved.
 In case of consideration for using Automotive equipment / device which demand high reliability, kindly contact our sales window correspondents.



NOTE 1 .THIS PRODUCT SHALL BE MATED WITH A 'DH**-37P*'.
 2 .THIS PRODUCT SHALL BE USED ASSEMBLED TO A COVER CASE 'DH-37-C***' AND A CLAMP 'DH-37-CM*(***)'.

3	COPPER ALLOY	CONTACT AREA :GOLD 0.2μm MIN INSULATION DISPLACEMENT AREA:GOLD 0.03 μm MIN UNDER PLATING :NICKEL 1μm MIN	5	STAINLESS STEEL	PLATING:NICKEL 1μm MIN							
2			4	POLYAMID	UL94V-0(BLACK)							
1	POLYAMID	UL94V-0(BLACK)										
NO.	MATERIAL	FINISH . REMARKS	NO.	MATERIAL	FINISH . REMARKS							
UNITS	mm	SCALE	4 : 1	COUNT	2	DESCRIPTION OF REVISIONS	DESIGNED	TF. HIGASHIYAMA	CHECKED	AH. KODAMA	DATE	10. 10. 04
APPROVED : A0. SUZUKI		10. 03. 23		DRAWING NO.		EDC3-127107-00						
CHECKED : KN. ICHIKAWA		10. 03. 23		PART NO.		DH40-37S						
DESIGNED : TU. TANIGUCHI		10. 03. 23		CODE NO.		CL244-0055-3-00						
DRAWN : TU. TANIGUCHI		10. 03. 23										