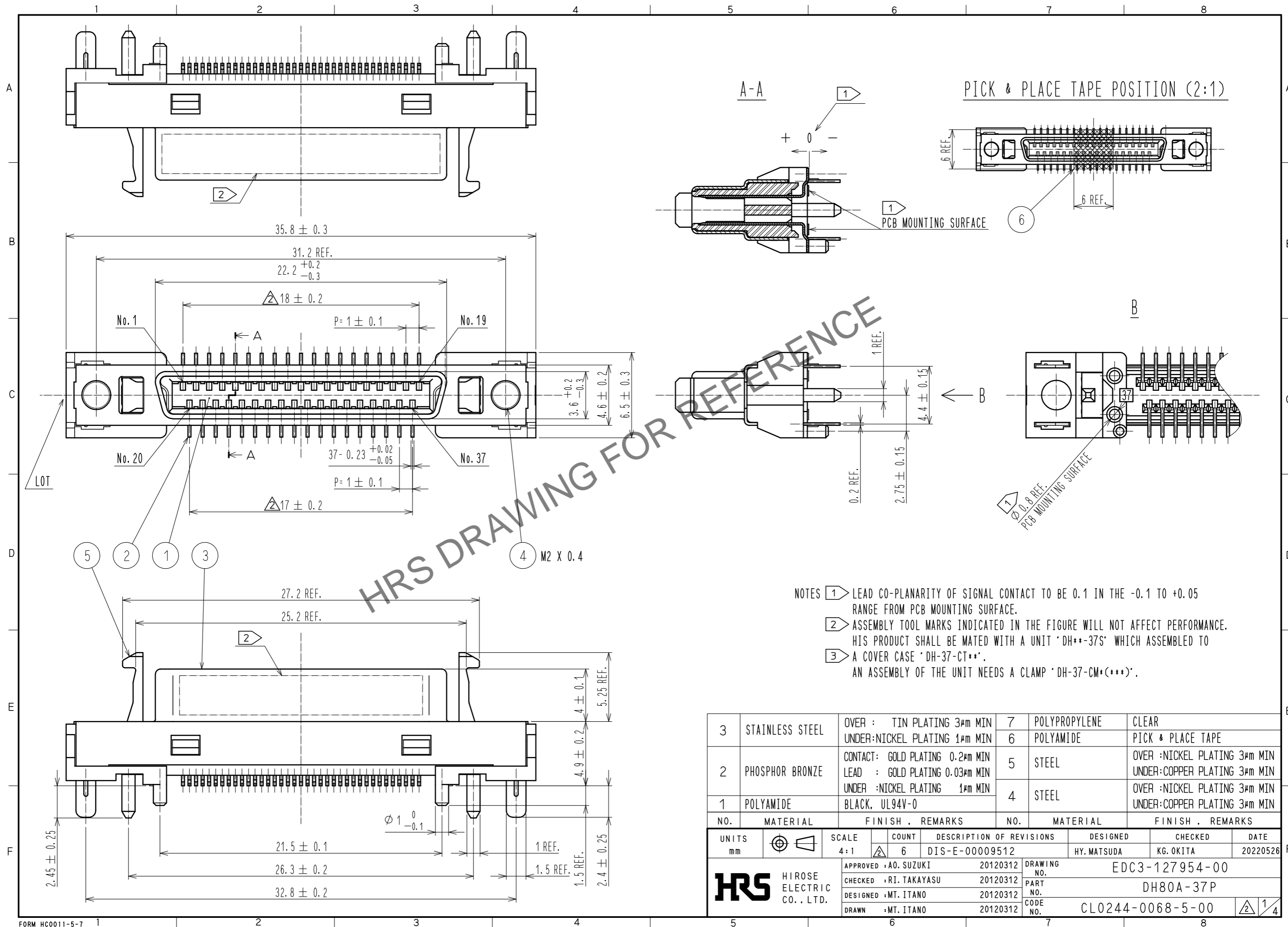


Feb.1.2025 Copyright 2025 HIROSE ELECTRIC CO., LTD. All Rights Reserved.  
In case of consideration for using Automotive equipment / device which demand high reliability, kindly contact our sales window correspondents.



HRS DRAWING FOR REFERENCE

- NOTES**
- LEAD CO-PLANARITY OF SIGNAL CONTACT TO BE 0.1 IN THE -0.1 TO +0.05 RANGE FROM PCB MOUNTING SURFACE.
  - ASSEMBLY TOOL MARKS INDICATED IN THE FIGURE WILL NOT AFFECT PERFORMANCE. HIS PRODUCT SHALL BE MATED WITH A UNIT 'DH\*\*-37S' WHICH ASSEMBLED TO
  - A COVER CASE 'DH-37-CT\*\*'. AN ASSEMBLY OF THE UNIT NEEDS A CLAMP 'DH-37-CM+(\*\*\*)'.

NO.	MATERIAL	FINISH . REMARKS	NO.	MATERIAL	FINISH . REMARKS
3	STAINLESS STEEL	OVER : TIN PLATING 3µm MIN UNDER: NICKEL PLATING 1µm MIN	7	POLYPROPYLENE	CLEAR
2	PHOSPHOR BRONZE	CONTACT: GOLD PLATING 0.2µm MIN LEAD : GOLD PLATING 0.03µm MIN UNDER : NICKEL PLATING 1µm MIN	6	POLYAMIDE	PICK & PLACE TAPE
1	POLYAMIDE	BLACK, UL94V-0	5	STEEL	OVER : NICKEL PLATING 3µm MIN UNDER: COPPER PLATING 3µm MIN
			4	STEEL	OVER : NICKEL PLATING 3µm MIN UNDER: COPPER PLATING 3µm MIN

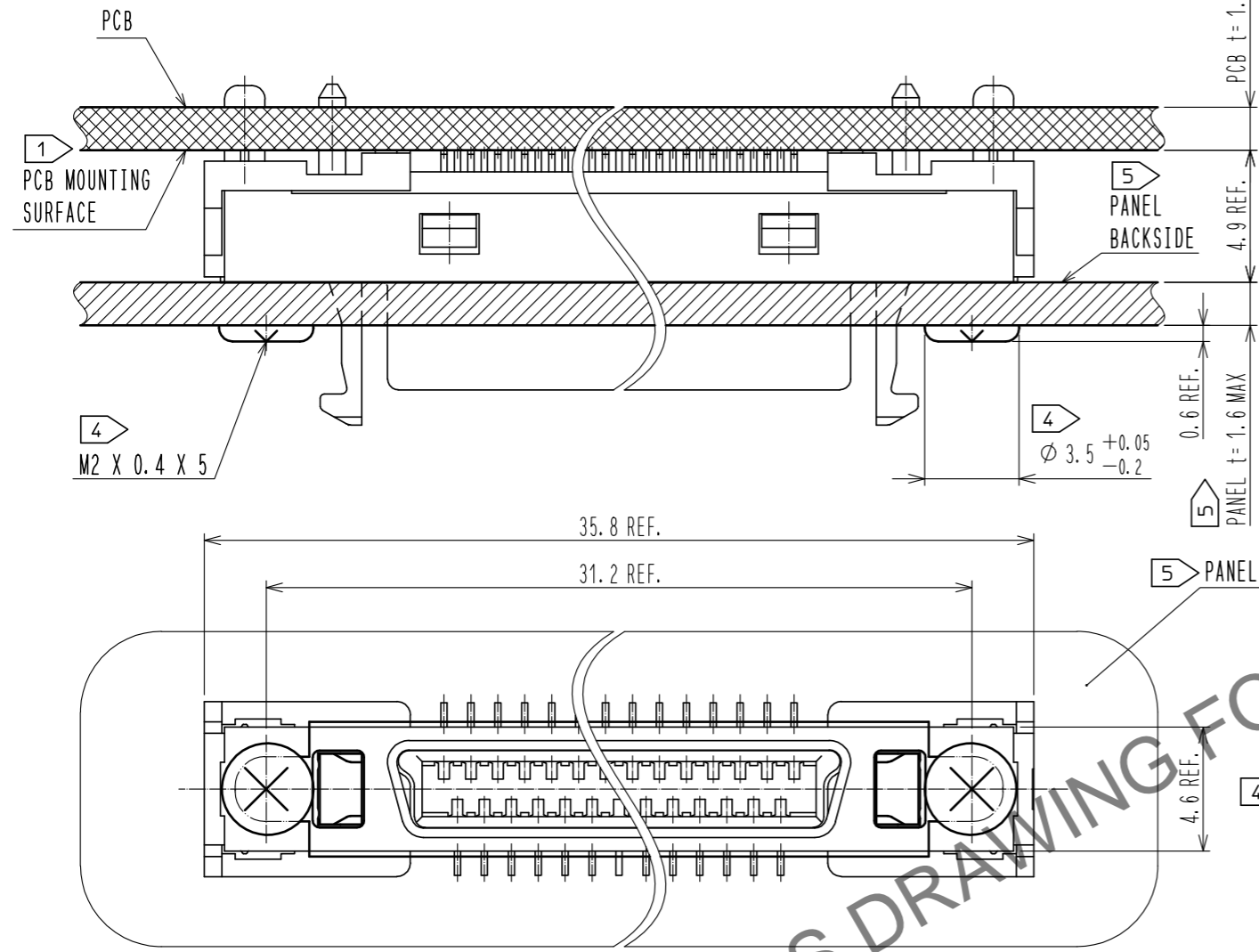
UNITS	SCALE	COUNT	DESCRIPTION OF REVISIONS	DESIGNED	CHECKED	DATE
mm	4:1	6	DIS-E-00009512	HY. MATSUDA	KG. OKITA	20220526

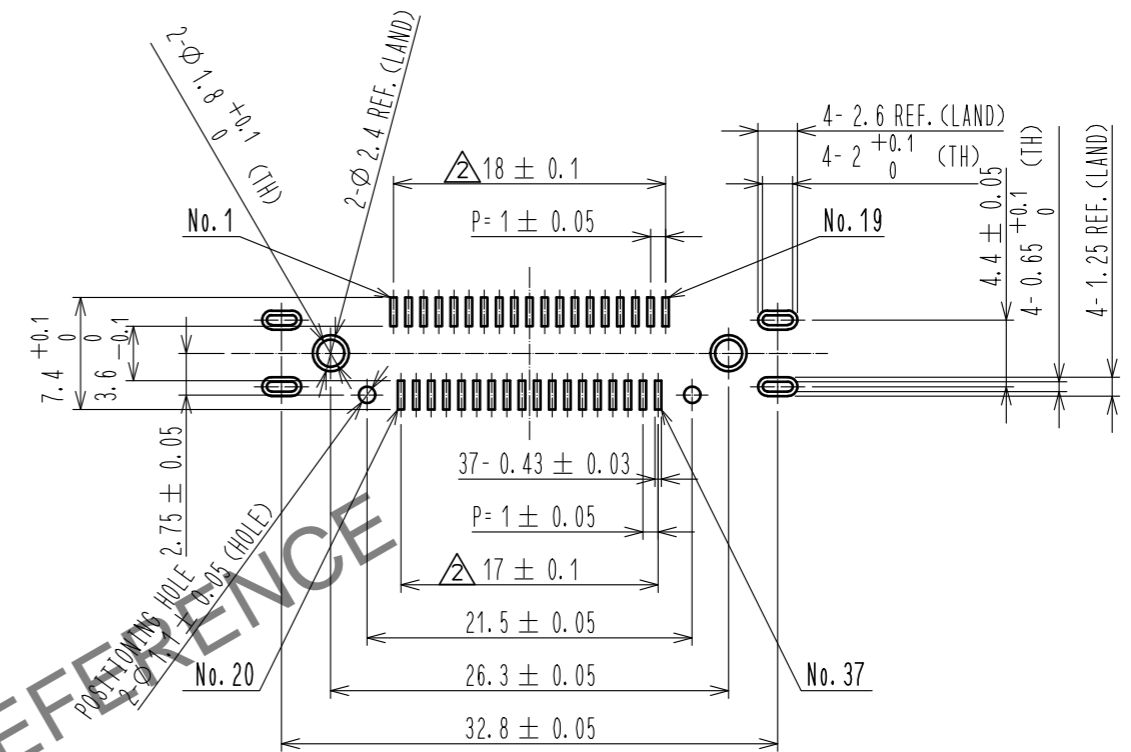
APPROVED	DATE	DRAWING NO.
A0. SUZUKI	20120312	EDC3-127954-00
CHECKED	DATE	PART NO.
RI. TAKAYASU	20120312	DH80A-37P
DESIGNED	DATE	CODE NO.
MT. ITANO	20120312	CL0244-0068-5-00
DRAWN	DATE	
MT. ITANO	20120312	

Feb.1.2025 Copyright 2025 HIROSE ELECTRIC CO., LTD. All Rights Reserved.  
 In case of consideration for using Automotive equipment / device which demand high reliability, kindly contact our sales window correspondents.

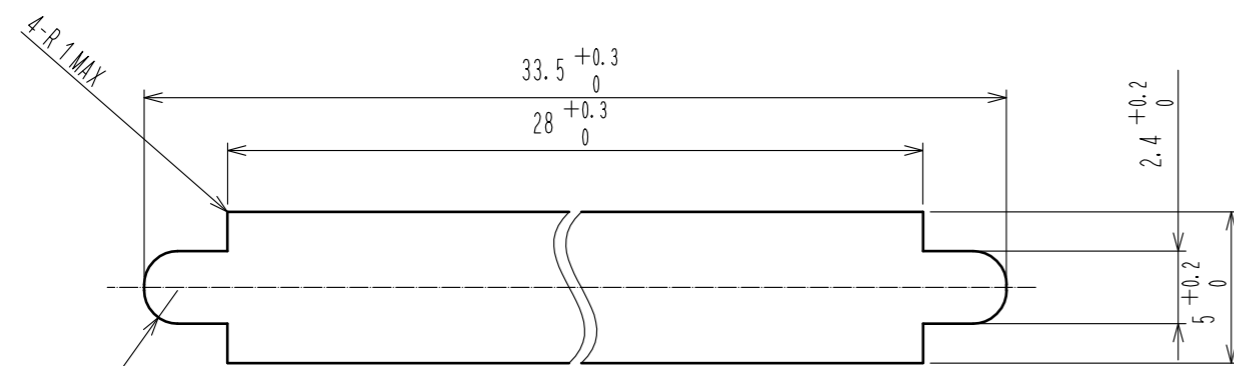
**CONNECTR MOUNTED ON PCB**  
 (FOR EXAMPLE, PANEL THICKNESS IS 1.6mm)



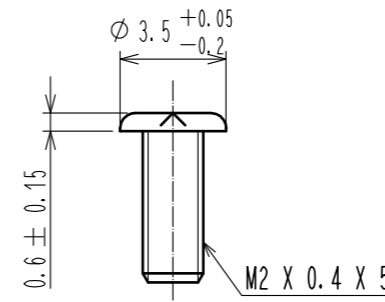
**PCB LAYOUT FOR REFERENCE (MOUNTING SURFACE SIDE) (2:1)**



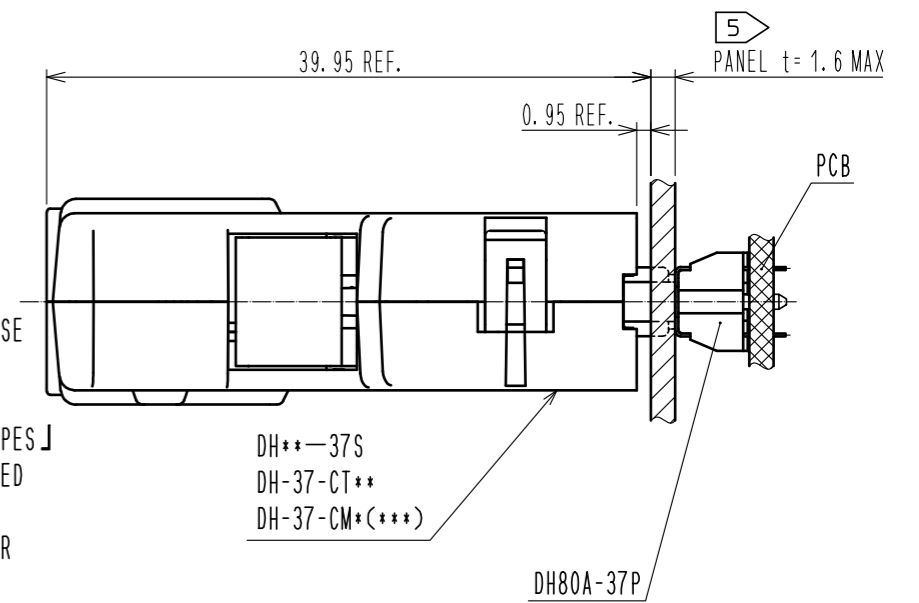
**5 PANEL CUTOUT FOR REFERENCE**



**4 SCREW FOR INSTALLATION**



**MATED (2:1)**

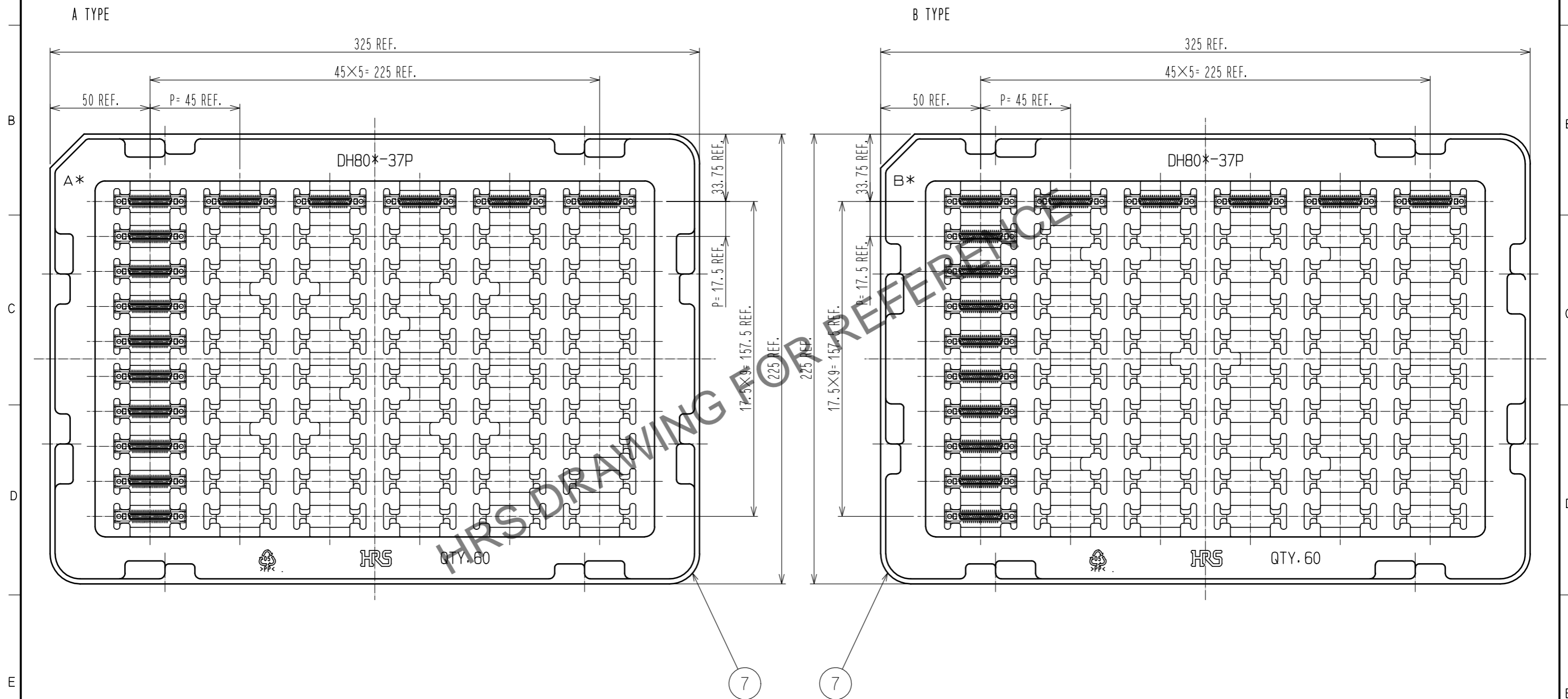


- NOTES**
- 4 INSTALLATION WITH THE PANEL MUST USE A DEDICATED SCREW.  
 PURCHASE :NITTOSEIKO CO.,LTD.  
 [ FINE PAN HEAD MACHINE SCREW 2 TYPES ]
  - 5 THIS PRODUCT WAS DESIGNED TO BE USED WITH FIXED ONTO A PANEL.  
 IN THE CASE THE PLUG IS MATED UNDER UN-FIXED CONDITION AND ADDED STRONG LOAD ON INDICATED DIRECTION, IT HAS A RISK OF BEING PEELED OFF FROM PCB. THEN PLEASE TAKE CARE ON HANDLING WHEN YOU USE IT UNDER THE CONDITION BY FIXING IT ONTO HOUSING OR THE OTHER WAYS.  
 PANEL SIZE SHOULD USE 1.6 MM MAX.

<b>HRS</b>	DRAWING NO.	EDC3-127954-00
	PART NO.	DH80A-37P
	CODE NO.	CLO244-0068-5-00
		2/4

Feb.1.2025 Copyright 2025 HIROSE ELECTRIC CO., LTD. All Rights Reserved.  
In case of consideration for using Automotive equipment / device which demand high reliability, kindly contact our sales window correspondents.

# DRAWING FOR PACKING (FREE)

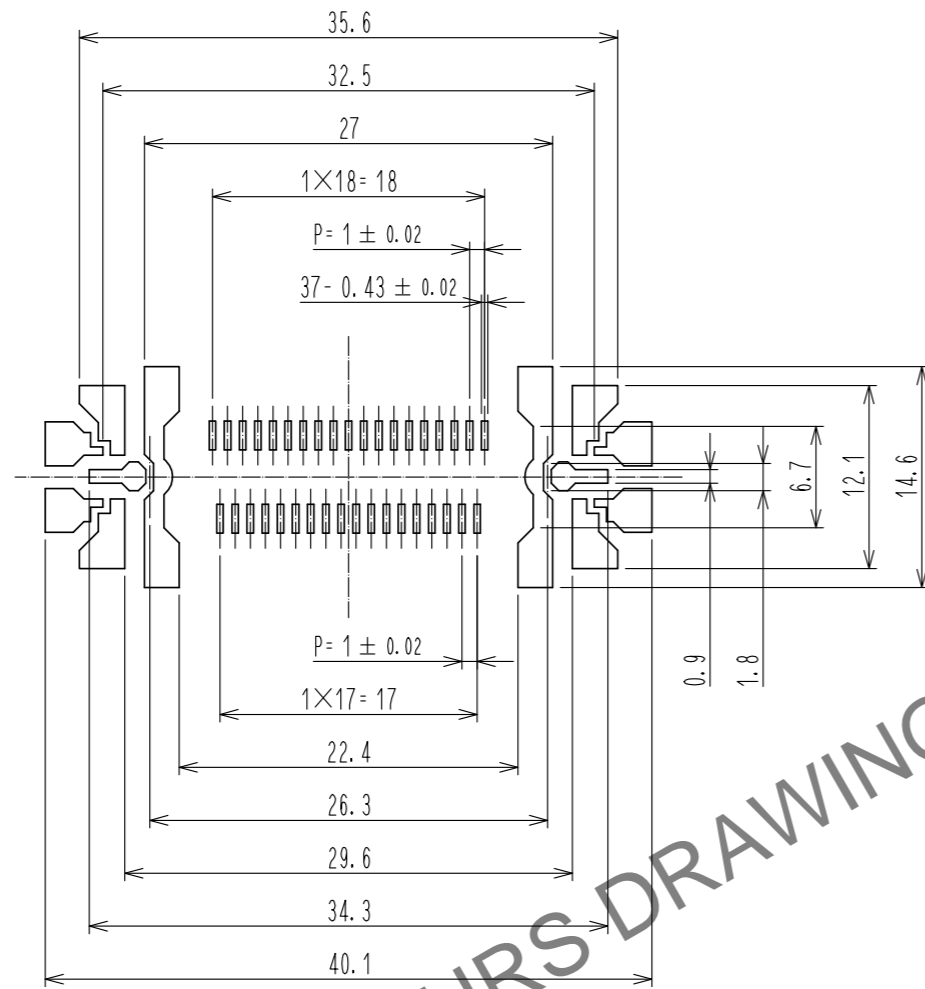


※TRAYS, A TYPE AND B TYPE, ARE PILED UP ALTERNATELY.

<b>HRS</b>	DRAWING NO.	EDC3-127954-00
	PART NO.	DH80A-37P
	CODE NO.	CL0244-0068-5-00
		2/3

Feb.1.2025 Copyright 2025 HIROSE ELECTRIC CO., LTD. All Rights Reserved.  
In case of consideration for using Automotive equipment / device which demand high reliability, kindly contact our sales window correspondents.

△ REFERENCE METAL MASK LAYOUT(2:1)  
(t=0.15)



GENERAL TOLERANCE IS  $\pm 0.05$

- △ 6. Metal mask dimensions of the drawings described, are reference dimensions for 0.15 mm thickness metal mask.  
 Change the metal mask dimensions by thickness of the metal mask, thickness of PCB, component of solder paste and mounting conditions.  
 Change the metal mask dimensions in case of mounting DH\*\*\*P in parallel.  
 Change the metal mask dimensions, if there are other mounting parts or implementation pattern around the portion of mounting position of DH\*\*\*P.

<b>HRS</b>	DRAWING NO.	EDC3-127954-00
	PART NO.	DH80A-37P
	CODE NO.	CL0244-0068-5-00
		△ 4/4