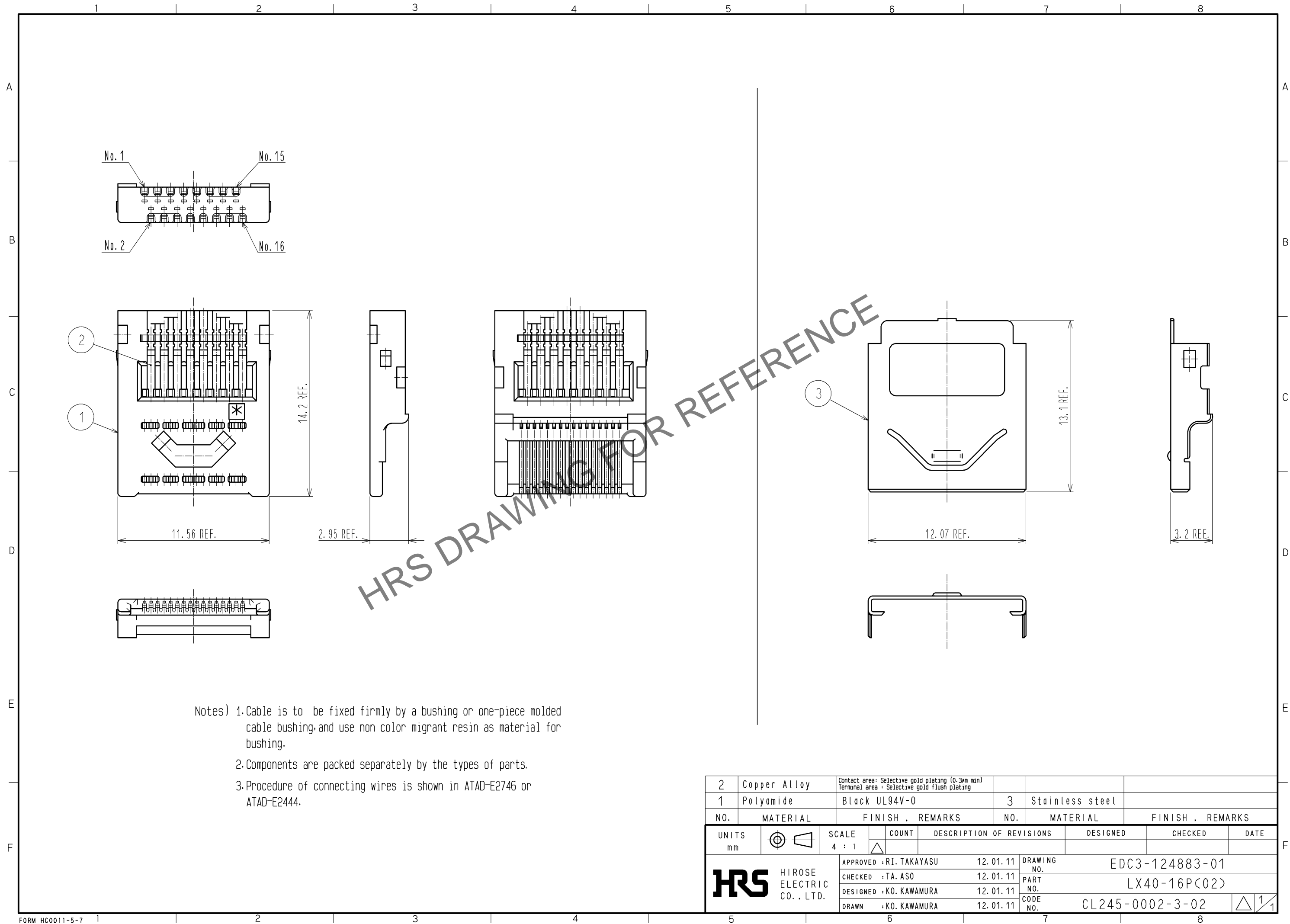


May.1.2024 Copyright 2024 HIROSE ELECTRIC CO., LTD. All Rights Reserved.
In case of consideration for using Automotive equipment / device which demand high reliability, kindly contact our sales window correspondents.



2	Copper Alloy	Contact area : Selective gold plating (0.3µm min) Terminal area : Selective gold flush plating			
1	Polyamide	Black UL94V-0	3	Stainless steel	
NO.	MATERIAL	FINISH , REMARKS	NO.	MATERIAL	FINISH , REMARKS
UNITS mm		SCALE 4 : 1	COUNT 	DESCRIPTION OF REVISIONS	DESIGNED
HIROSE ELECTRIC CO., LTD.		APPROVED : RI. TAKAYASU	12. 01. 11	DRAWING NO.	EDC3-124883-01
		CHECKED : TA. ASO	12. 01. 11	PART NO.	LX40-16P(02)
		DESIGNED : KO. KAWAMURA	12. 01. 11	CODE NO.	CL245-0002-3-02
		DRAWN : KO. KAWAMURA	12. 01. 11		1/1