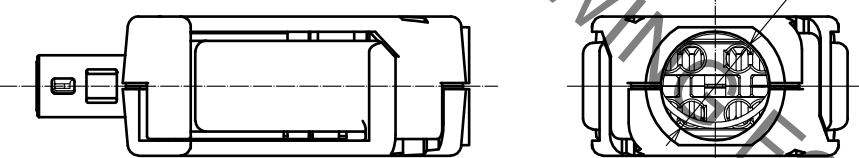
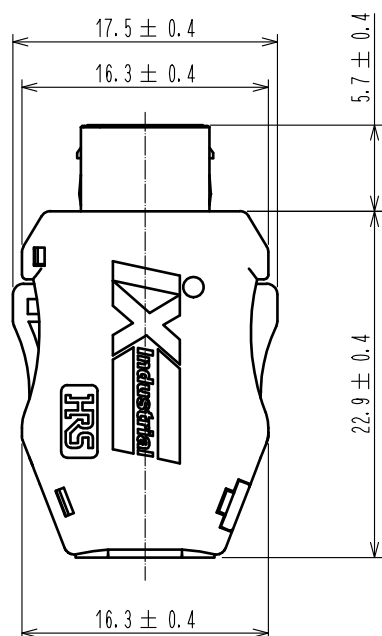
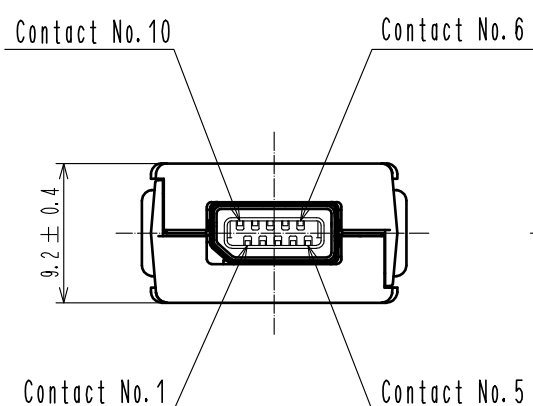
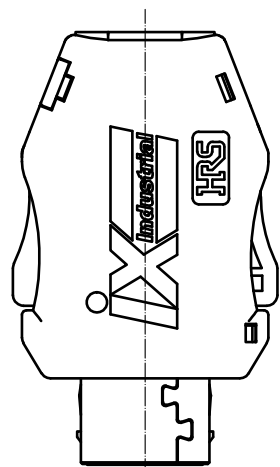


Aug.1.2022 Copyright 2022 HIROSE ELECTRIC CO., LTD. All Rights Reserved.
In case of consideration for using Automotive equipment / device which demand high reliability, kindly contact our sales window correspondents.



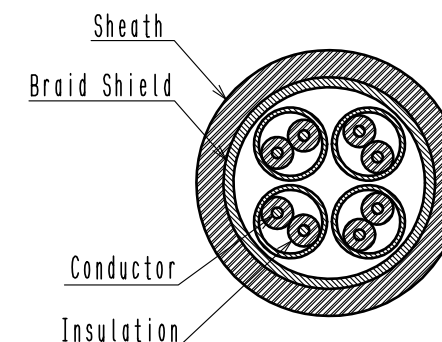
2 Pin Assignment For 10/100 Mbit/s And 1/10 Gbit/s Ethernet

Contact No.	Signal	
	10/100 Mbit/s	1/10 Gbit/s
1	TX+	BI_DA+
2	TX-	BI_DA-
3	N.C	N.C
4	N.C	BI_DC+
5	N.C	BI_DC-
6	RX+	BI_DB+
7	RX-	BI_DB-
8	N.C	N.C
9	N.C	BI_DD+
10	N.C	BI_DD-

Notes. 1. Recommended cable condition is shown below.
 ⚠ A list of compatible cables is available on the Hirose website.
 When using a non-recommended cable, please contact a Hirose sales representative.
 Refer to the technical specification (ETAD-E3162) for wiring and assembly procedures.
 Tool HT803/IXG-8/10S-63-72 is used for cable assembly of IX326.

⚠ Recommended Cable

Items		Recommended Condition
Conductor	Size	AWG#22
	Composition	7 stranded
	Material	Annealed copper wire
Insulation O.D.		φ1.4 to 1.6mm
Braid Shield		Tin plating
Sheath O.D.		φ6.3 to 7.2mm

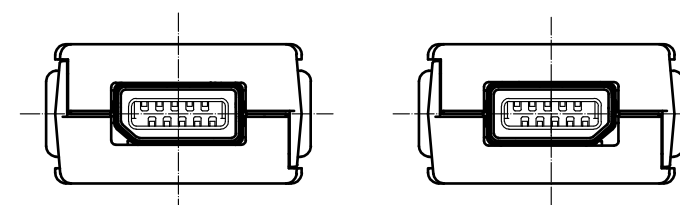


2 This product (Type A) is defined for 10/100 Mbit/s and 1/10 Gbit/s Ethernet communication. Please use Type B for all other non Ethernet applications like signaling, serial or other industrial bus communication systems.

⚠ Mating Key

Type A

Type B



⚠ 3 Excluding the plug unit, this product is packaged separately by the type of parts. The shield sheet is packaged prior to bending. (See next page.)

4. Cable assembly is possible up to 8pos.
 Contact No. 3 and 8 do not have a hole to pass the cable through the IDC guide.

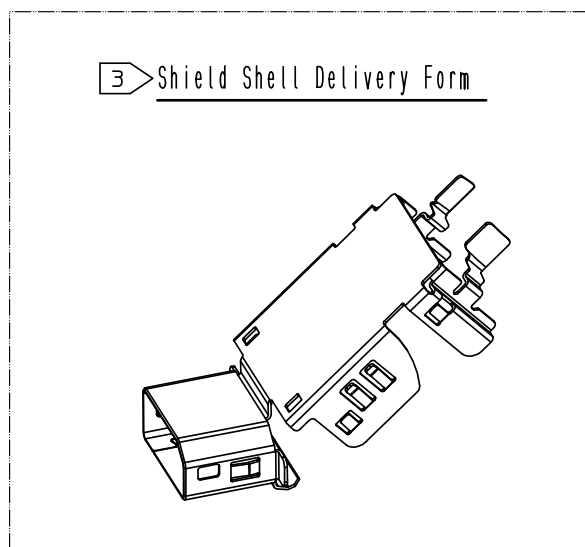
NO.	MATERIAL	FINISH	REMARKS	NO.	MATERIAL	FINISH	REMARKS
3	Stainless Steel			8	PC	Dark gray	UL94V-0
2	PA		Dark gray	7	Stainless Steel	Nickel 0.2 μm min	
1	Copper Alloy		Contact area : Palladium-Nickel 0.75 μm min + Gold 0.05 μm min Wiring area : Gold 0.03 μm min Under plating : Nickel 2 μm min	6	Stainless Steel	Nickel 1 μm min	
				5	PC	Clear blue	UL94V-0
				4	PA	Black	UL94V-0

UNITS	SCALE	COUNT	DESCRIPTION OF REVISIONS	DESIGNED	CHECKED	DATE
mm	2 : 1	6	DIS-E-00006883	MT. YASUDA	KI. KAGOTANI	20211025

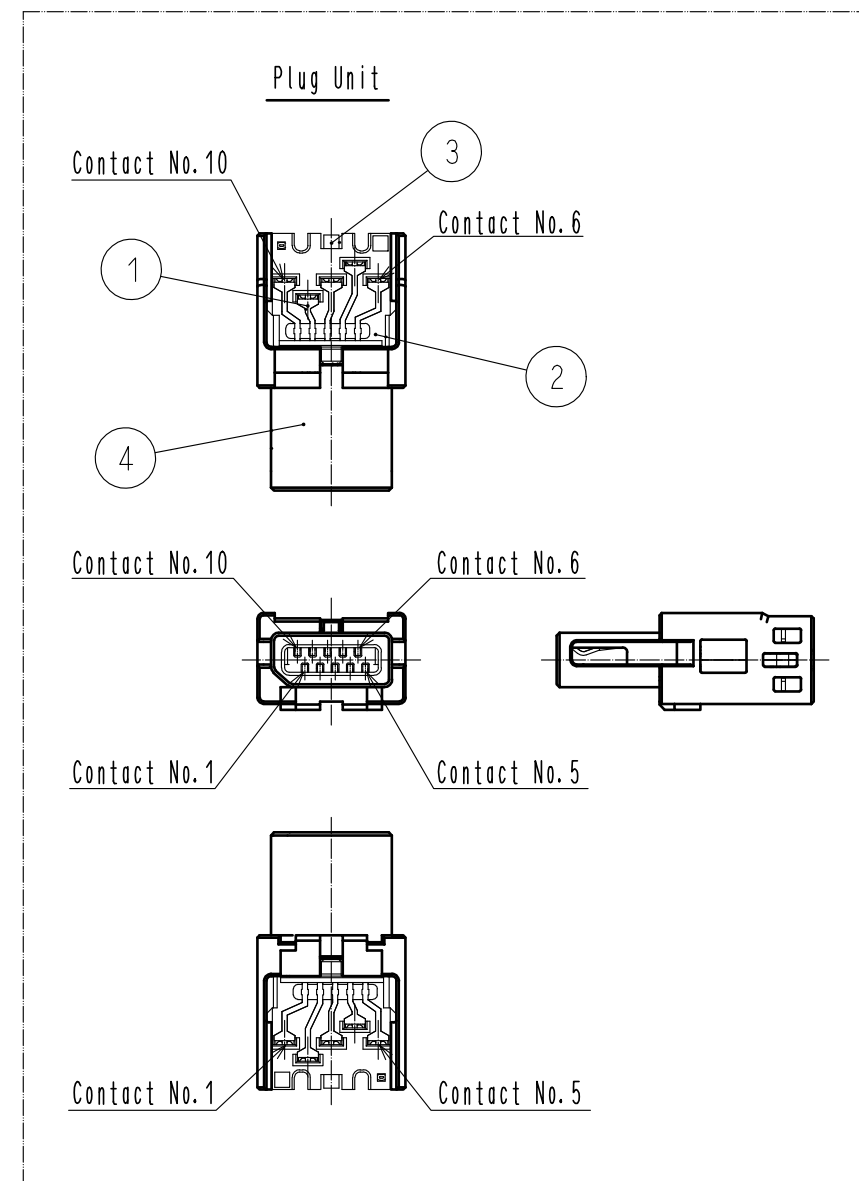
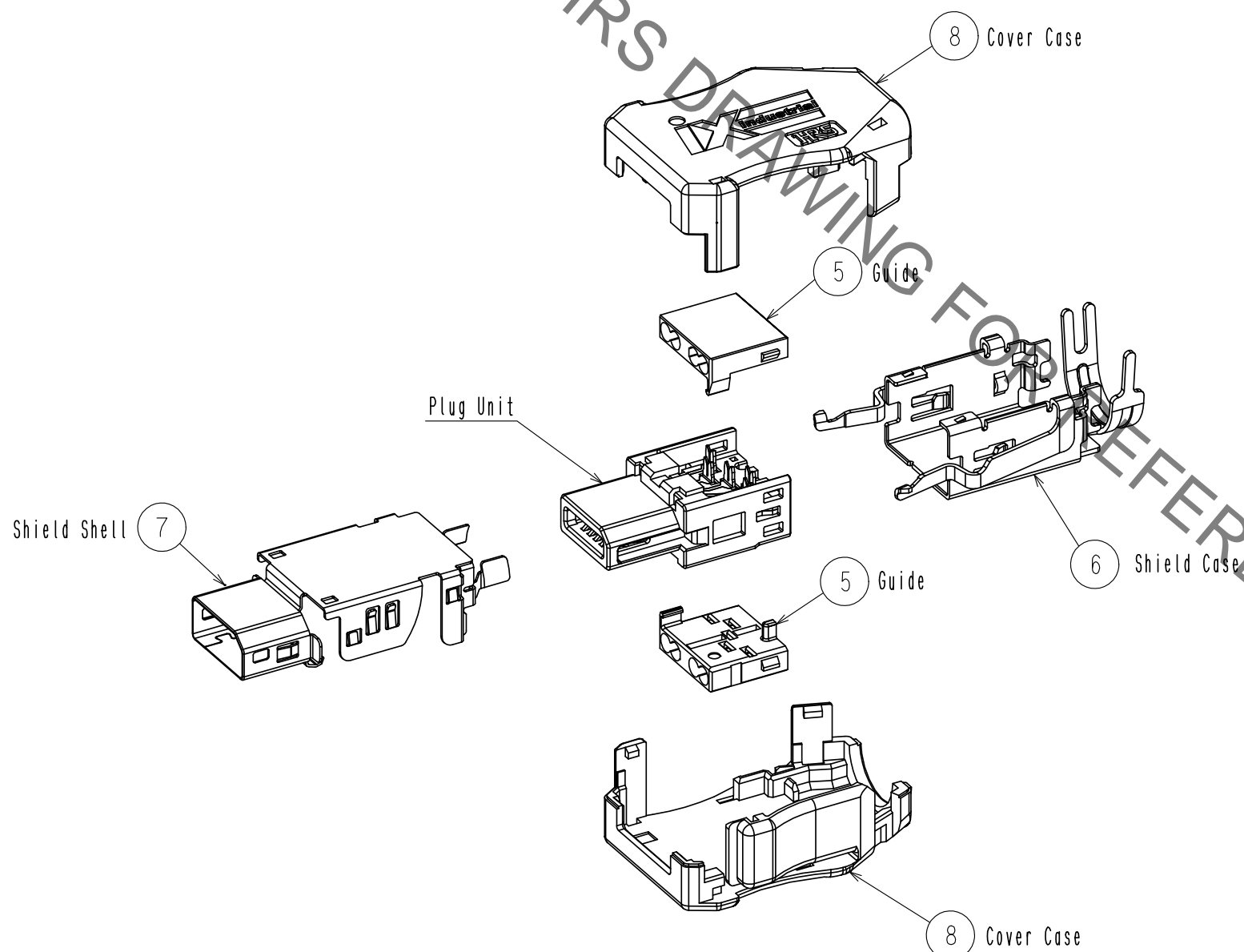
APPROVED	CHECKED	DESIGNED	DRAWN	NO.	NO.	NO.	NO.
RI. TAKAYASU	KI. NAGANUMA	JY. IGA	JY. IGA	20180730	20180727	20180727	20180727

DRAWING NO.	PART NO.	CODE NO.
EDC-129795-01-00	IX326-A-8S-CV(7.0)C(1)	CL0251-0042-0-01

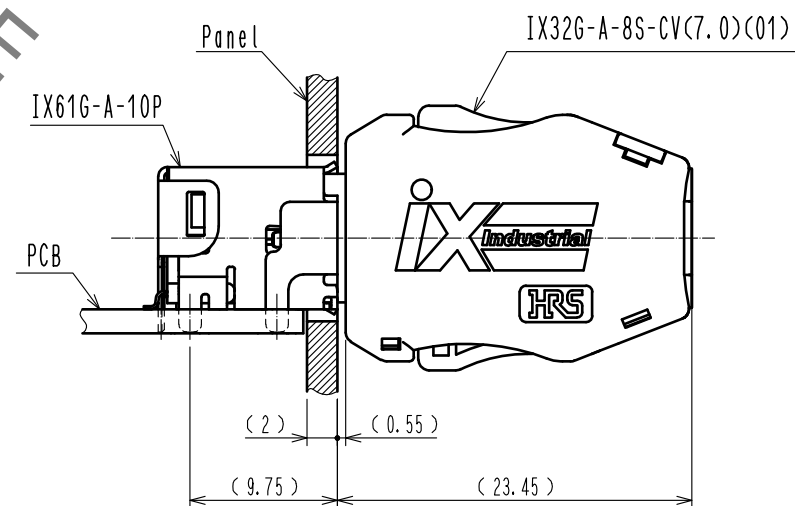
Aug.1.2022 Copyright 2022 HIROSE ELECTRIC CO., LTD. All Rights Reserved.
 In case of consideration for using Automotive equipment / device which demand high reliability, kindly contact our sales window correspondents.



Product Structure



Mated Condition



HRS	DRAWING NO.	EDC-129795-01-00
	PART NO.	IX32G-A-8S-CV(7.0)(01)
	CODE NO.	CL0251-0042-0-01
		2/2