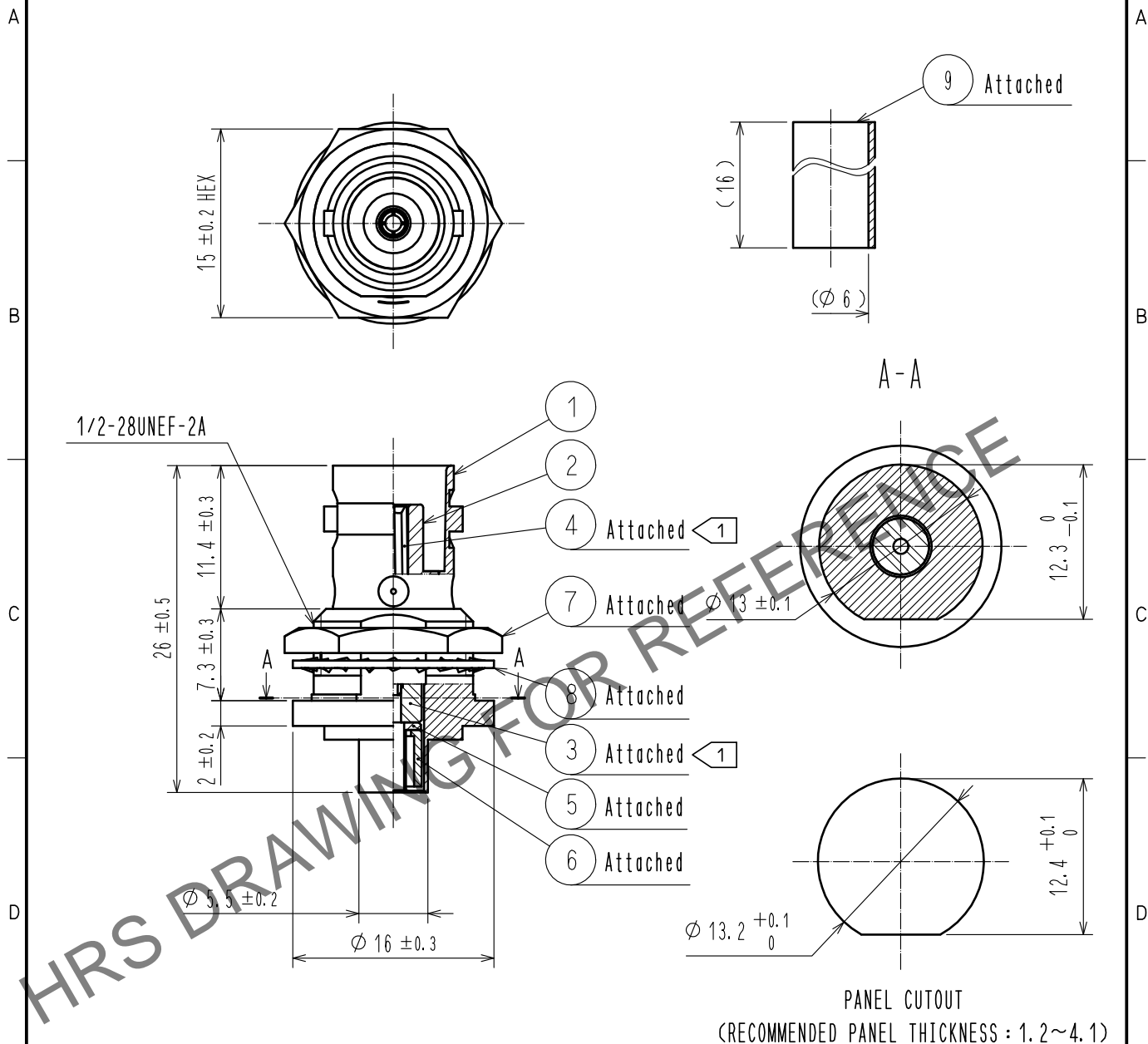


May.1.2024 Copyright 2024 HIROSE ELECTRIC CO., LTD. All Rights Reserved.
In case of consideration for using Automotive equipment / device which demand high reliability, kindly contact our sales window correspondents.

ASSEMBLY TOOL: APPLICABLE OUTER CONDUCTOR CRIMPING TOOL HT303/HRM-T-4(58A/U HOLE)



NOTE 1 PART NUMBERS ③, ④ ARE ATTACHED AS ONE BLOCK.

5	BRASS	NICKEL PLATING							
4	BERYLLIUM COPPER	GOLD PLATING		9	POLYOLEFIN	HEAT SHRINK TUBING			
3	PTFE			8	STEEL	NICKEL PLATING			
2	PTFE			7	BRASS	NICKEL PLATING			
1	BRASS	NICKEL PLATING		6	BRASS	NICKEL PLATING			
NO.	MATERIAL	FINISH . REMARKS		NO.	MATERIAL	FINISH . REMARKS			
UNITS mm		SCALE 2 : 1	COUNT 	DESCRIPTION OF REVISIONS			DESIGNED	CHECKED	DATE
			APPROVED : NK. NINOMIYA 20211115			DRAWING NO. EDC-136780-40-00			
HIROSE ELECTRIC CO., LTD.			CHECKED : NK. NINOMIYA 20211115			PART NO. BNC-BPJ-1.5DV(40)			
			DESIGNED : MT. KANEKO 20211112			CODE NO. CL0302-0393-2-40			
			DRAWN : NK. OOSHIMA 20211112						