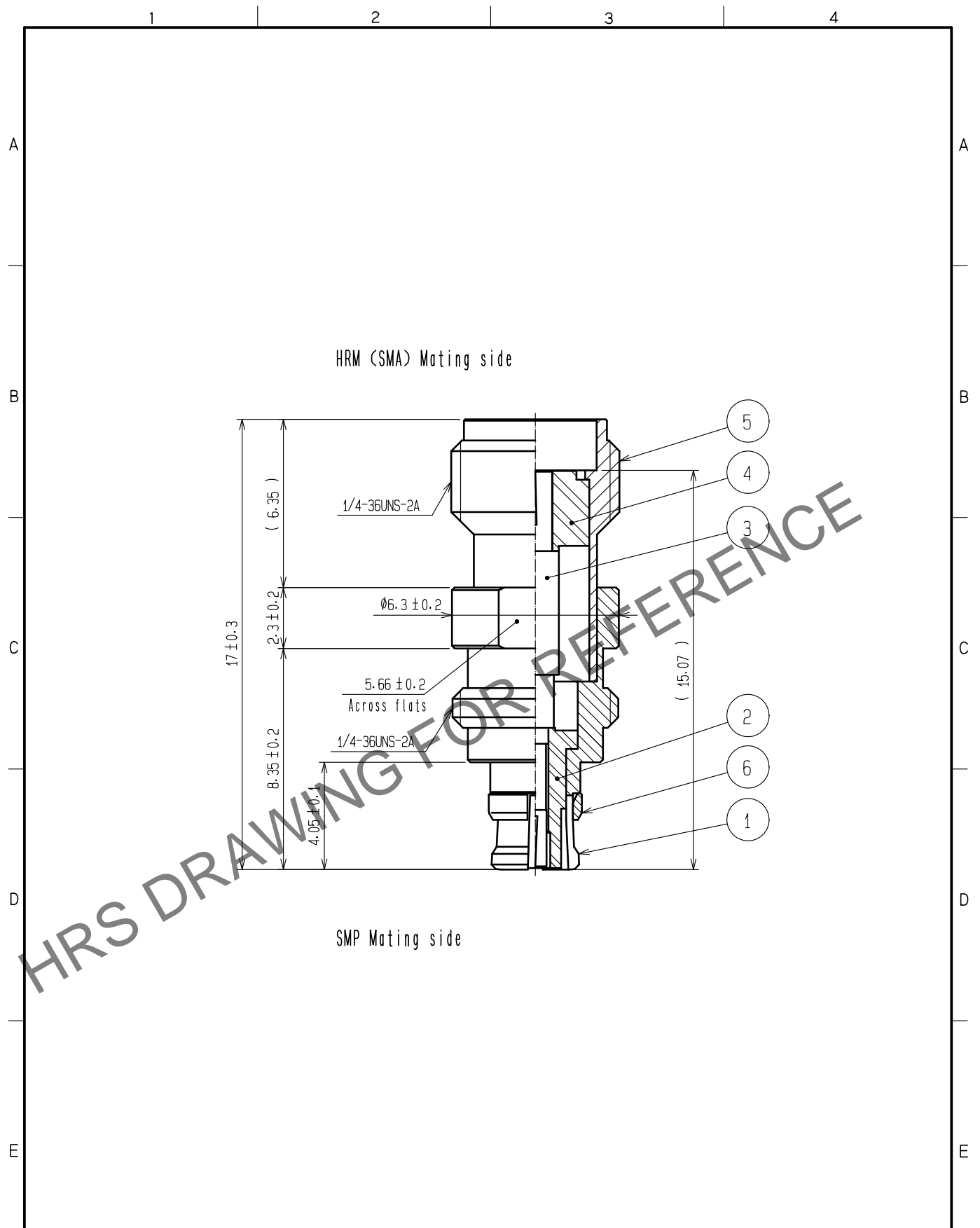


Mar.1.2025 Copyright 2025 HIROSE ELECTRIC CO., LTD. All Rights Reserved.
 In case of consideration for using Automotive equipment / device which demand high reliability, kindly contact our sales window correspondents.



| 3 | Beryllium copper | Gold plating | 6 | Beryllium copper | Gold plating | | |
|---------------------------------|------------------|------------------|------------|--------------------------|-------------------|---------|------|
| 2 | PTFE | | 5 | Stainless steel | Passivate | | |
| 1 | Beryllium copper | Gold plating | 4 | PTFE | | | |
| NO. | MATERIAL | FINISH . REMARKS | NO. | MATERIAL | FINISH . REMARKS | | |
| UNITS mm | | SCALE 5 : 1 | COUNT | DESCRIPTION OF REVISIONS | DESIGNED | CHECKED | DATE |
| HIROSE ELECTRIC CO., LTD. | APPROVED | : KY. SHIMIZU | 17. 02. 21 | DRAWING NO. | EDC-364323-00-00 | | |
| | CHECKED | : KY. SHIMIZU | 17. 02. 21 | PART NO. | HRMJ-SMPJ-BPA-18G | | |
| | DESIGNED | : TY. OZAKI | 17. 02. 21 | CODE NO. | CL311-0001-0-00 | | 1/1 |
| | DRAWN | : TY. OZAKI | 17. 02. 21 | | | | |