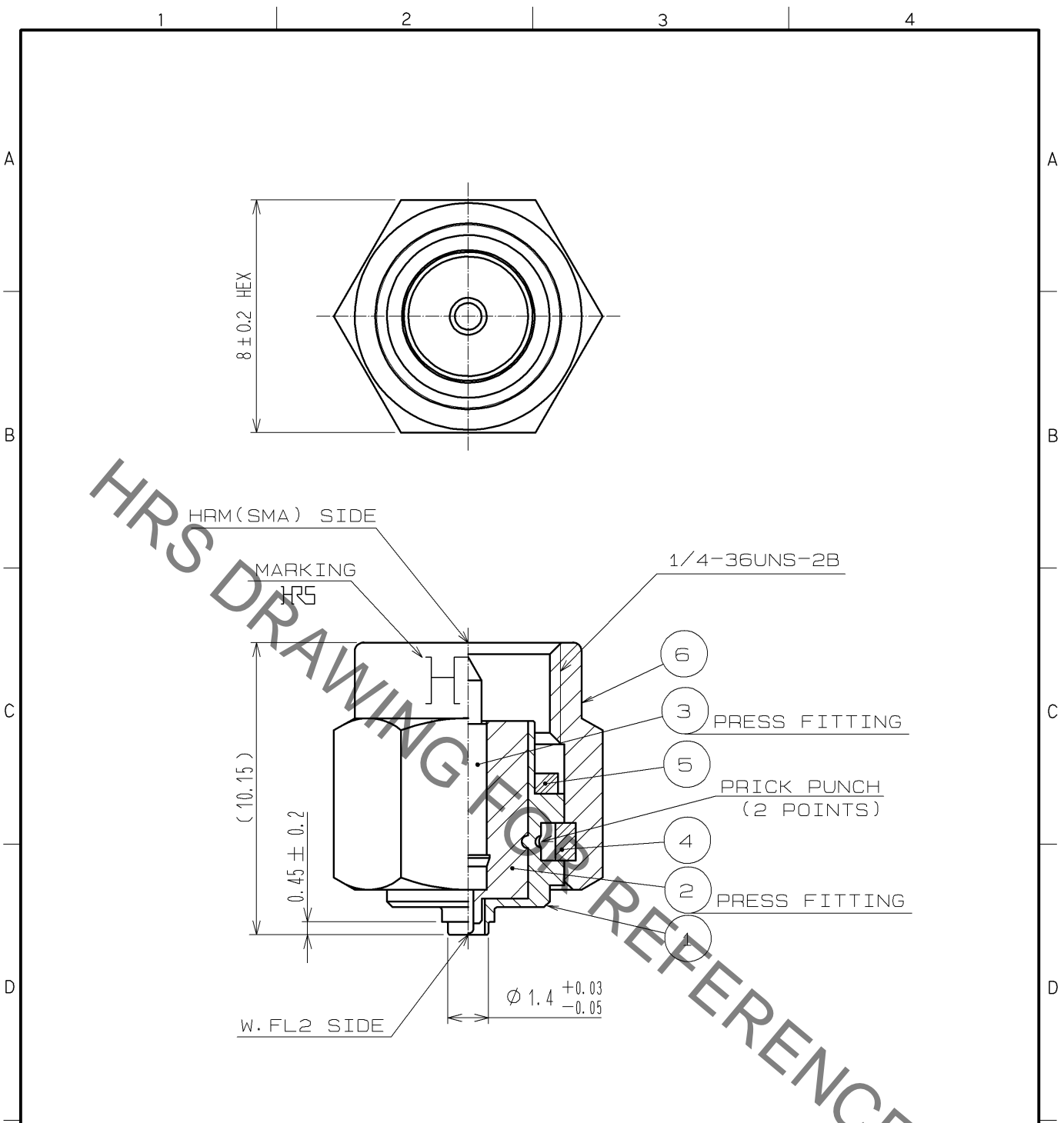


Jun.1.2021 Copyright 2021 HIROSE ELECTRIC CO., LTD. All Rights Reserved.  
 In case of consideration for using Automotive equipment / device which demand high reliability, kindly contact our sales window correspondents.



NOTE. USE ONLY FOR ELECTRICAL MEASUREMENT  
 BECAUSE OF NO LOCKING DEVICE IN MATING  
 PORTION ON W. FL2 SIDE.

RoHS COMPLIANT

3	PHOSPHOR BRONZE	GOLD PLATING	6	STAINLESS STEEL	PASSIVATE
2	PTFE		5	SILICONE RUBBER	(RED)
1	STAINLESS STEEL	NICKEL PLATING	4	BERYLLIUM COPPER	NICKEL PLATING
NO.	MATERIAL	FINISH . REMARKS	NO.	MATERIAL	FINISH . REMARKS

UNITS mm		SCALE 5 : 1	COUNT 	DESCRIPTION OF REVISIONS	DESIGNED	CHECKED	DATE
<b>HRS</b> HIROSE ELECTRIC CO., LTD.		APPROVED : MH. YAMANE 09. 02. 18		DRAWING NO. EDC4-305238-00			
		CHECKED : NK. NINOMIYA 09. 02. 17		PART NO. HRMP-W. FL2J			
		DESIGNED : TM. YOSHIDA 09. 02. 17		CODE NO. CL311-0394-6-00			
		DRAWN : TM. YOSHIDA 09. 02. 17		1/1			