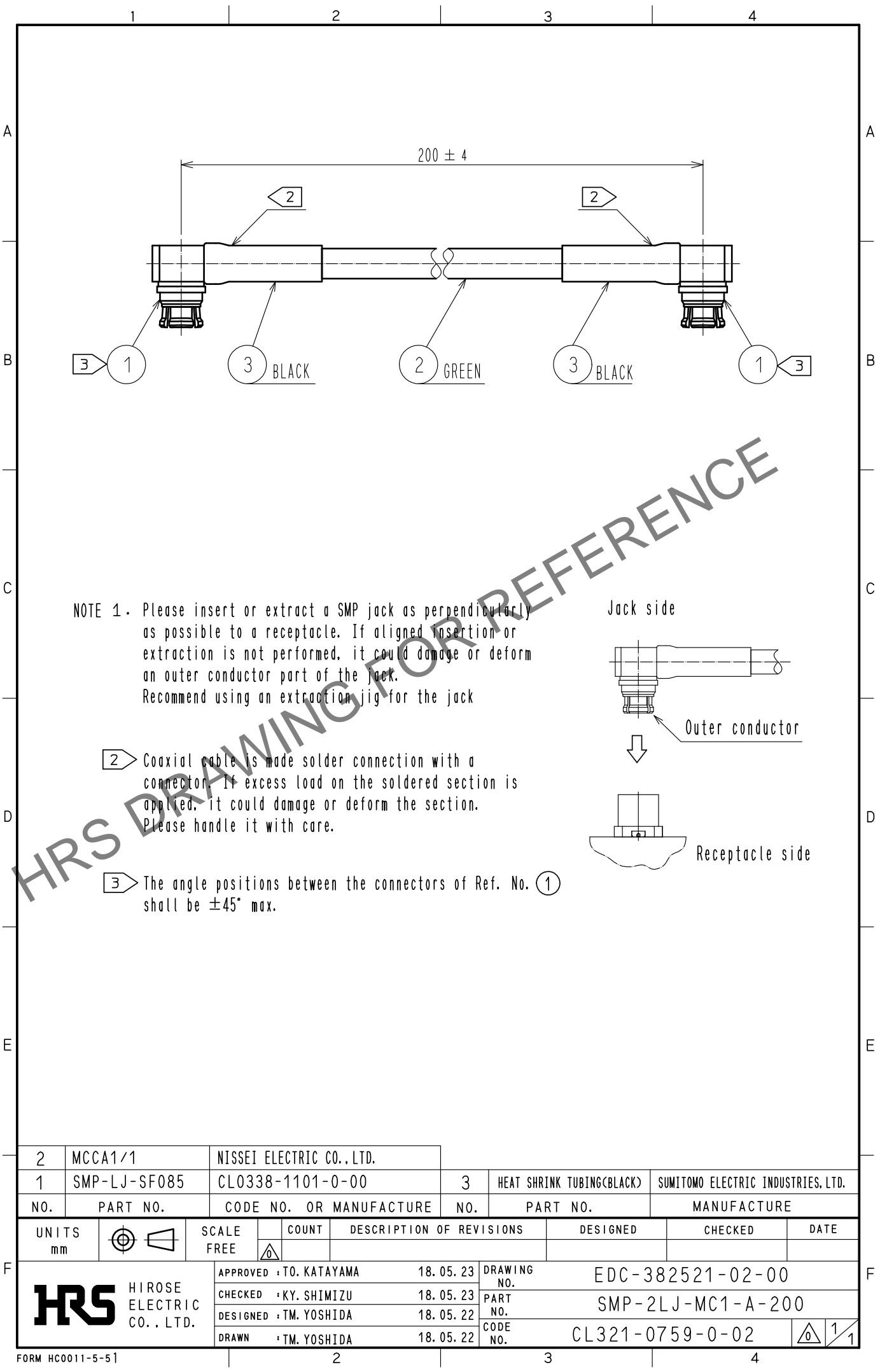


Apr.1.2024 Copyright 2024 HIROSE ELECTRIC CO., LTD. All Rights Reserved.  
In case of consideration for using Automotive equipment / device which demand high reliability, kindly contact our sales window correspondents.



2	MCCA1/1	NISSEI ELECTRIC CO., LTD.			
1	SMP-LJ-SF085	CL0338-1101-0-00	3	HEAT SHRINK TUBING(BLACK)	SUMITOMO ELECTRIC INDUSTRIES, LTD.
NO.	PART NO.	CODE NO. OR MANUFACTURE	NO.	PART NO.	MANUFACTURE
UNITS mm		SCALE FREE	COUNT 	DESCRIPTION OF REVISIONS	DESIGNED
					CHECKED
					DATE
HIROSE ELECTRIC CO., LTD.		APPROVED	TO. KATAYAMA	18.05.23	DRAWING NO.
		CHECKED	KY. SHIMIZU	18.05.23	
		DESIGNED	TM. YOSHIDA	18.05.22	PART NO.
		DRAWN	TM. YOSHIDA	18.05.22	CODE NO.
EDC-382521-02-00					
SMP-2LJ-MC1-A-200					
CL321-0759-0-02					
					1/1