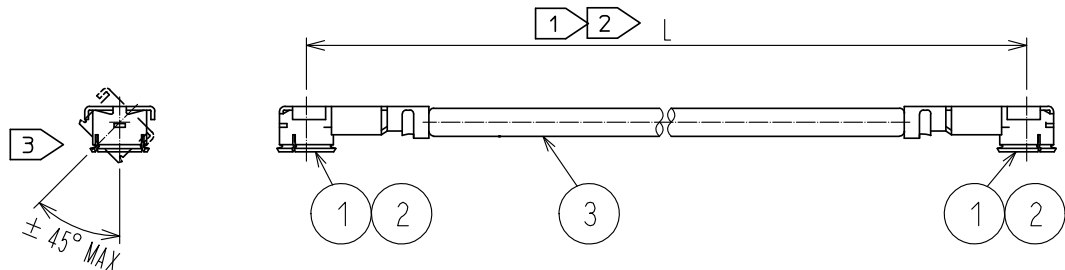


Feb.1.2025 Copyright 2025 HIROSE ELECTRIC CO., LTD. All Rights Reserved.  
 In case of consideration for using Automotive equipment / device which demand high reliability, kindly contact our sales window correspondents.



Part No.	Cable color
~084N~	WHITE
~084N1~	
~084H~	BLACK
~084N2~	

NOTE ① We indicate the length of the harness on the last of product name, 'L' part.

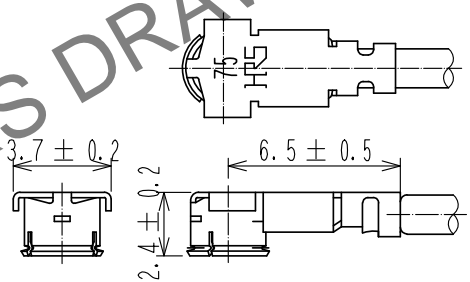
② Tolerance for [L]

Length L [mm]	Tolerance [mm]
$35 \leq L \leq 200$	$\pm 4$
$200 < L \leq 500$	$\pm 8$
$500 < L \leq 1000$	$\pm 12$
$1000 < L$	$\pm 1.5\%$

③ Connector rotation angle is within  $\pm 45$  degree from the above image.  
 For long length in the case of  $L > 500$ , the angle is optional.

4. Specifications are subject to change without notice.

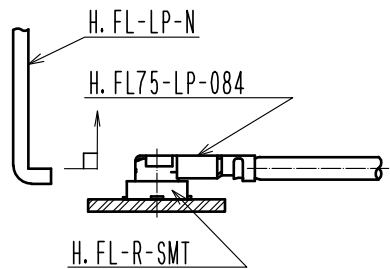
[ DIMENSIONS OF CONNECTOR ]



⚠ For stable supply of this series, material supplier of piece part#1 will be changed during 2019-2022. Please note this change in advance. There will be no difference in product performance and quality.

[ PRECAUTIONS FOR HANDLING ]

- ◆ Connector insertion and extraction
  - a. Connector shall be extracted vertically by specialised extraction JIG.  
 Part No. : H.FL-LP-NCCL Code:CL331-0551-7>  
 Never hold the cable when extracting the cable because it damages the connector.
  - b. Insert the connector as perpendicularly to the mating surface as possible by aligning the mating axes of both connectors. Do not excessively slant the connectors when inserting.



2	H.FL75-CONTACT	CL331-0550-4-00		
1	H.FL75-LP-084(C01)	CL331-0541-3-01	3	1.5Dia. coaxial cable
NO.	PART NO.	CODE NO.	NO.	PART NO.

UNITS	SCALE	COUNT	DESCRIPTION OF REVISIONS	DESIGNED	CHECKED	DATE
mm	FREE	1	DIS-D-00003994	MK. INOUE	NK. NINOMIYA	20190419
APPROVED : NK. NINOMIYA 20180611 CHECKED : MT. KANEKO 20180611 DESIGNED : MS. MATSUMOTO 20180611 DRAWN : MS. MATSUMOTO 20180611			DRAWING NO. EDC-383474-00-00 PART NO. H.FL75-2LP-084** - A-L CODE NO. CL321-5111-4-00			