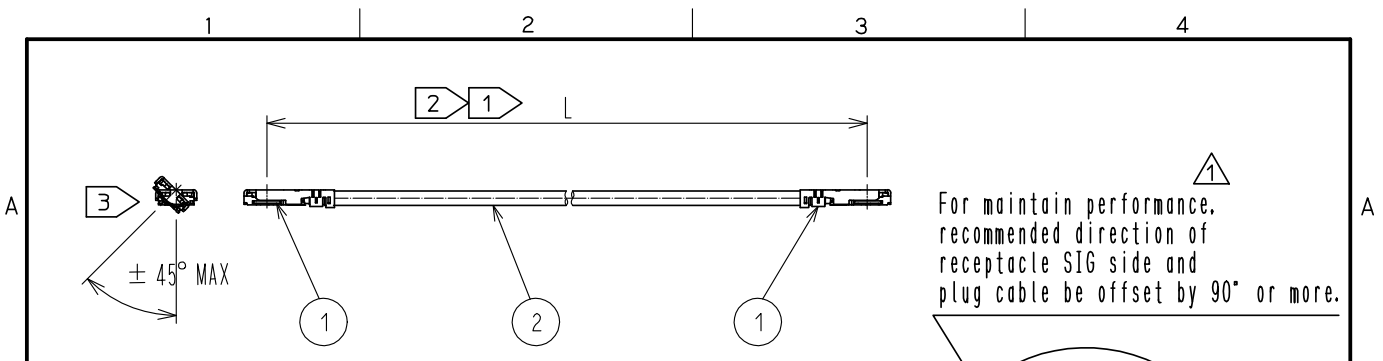
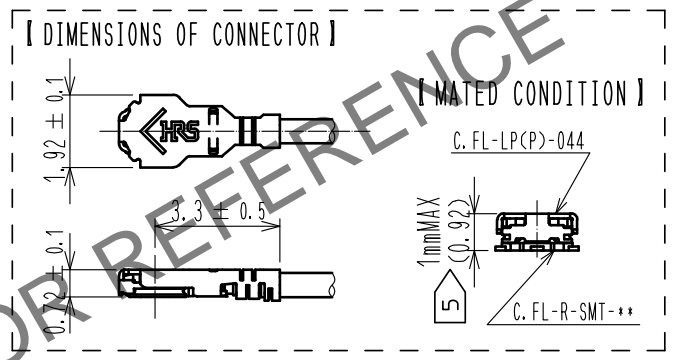
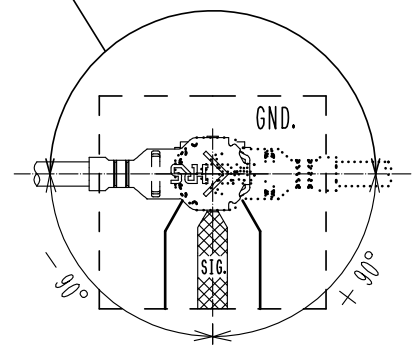


Apr. 1. 2024 Copyright 2024 HIROSE ELECTRIC CO., LTD. All Rights Reserved. In case of consideration for using Automotive equipment / device which demand high reliability, kindly contact our sales window correspondents.



- NOTE 1 We indicate the length of the harness on the last of product name, 'L' part.
- 2 Tolerance for [L]
- | Length L [mm] | Tolerance [mm] |
|----------------------|----------------|
| $41 \leq L \leq 170$ | ± 0.3 |
- 3 Connector rotation angle is within ± 45 degree from the above image. For long length in the case of $L > 150$, the angle is optional.
4. Specifications are subject to change without notice.
- 5 The drawing shows mated connector height only.

Part No.	Cable color
~044*2TSH~	BLACK



【 PRECAUTIONS FOR HANDLING 】

- Connector insertion and extraction
 - a. Use the following insertion jig to insert the connectors vertically, aligning the axis of coupling of both connectors. (Figure 1)
Product name: X.FL(V)-LP-IN.OUT (CL0331-0076-0)
When inserting the connector, do not insert it at an angle as it may cause deformation (damage) of the connector.
 - b. Use the following insertion jig to pull out the connector. (Figure 2)
Product name: X.FL(V)-LP-IN.OUT (CL0331-0076-0)
When pulling out the cable, do not pull it out by holding the cable as this may damage the connector.
- The following table shows the allowable load applied to the cable after mating the connector. (Figure 3)
Please do not apply a load exceeding these values to the cable.
- Do not apply any force to the cable in the direction of lifting it, as this may cause the inserted plug to separate. (Figure 4)
- Do not apply force in the direction of lifting the cable. It is recommended to place a cushioning material on the plug to prevent it from being unmated. (Figure 5)

1	C. FL-LP(P)-044	CL331-2201-0	2	0.64 Dia. coaxial cable
NO.	Part No.	Code No.	NO.	Part No.

HALOGEN FREE

UNITS mm		SCALE FREE	COUNT 1	DESCRIPTION OF REVISIONS DIS-D-00011691	DESIGNED MS. MATSUMOTO	CHECKED MT. KANEKO	DATE 20220509
-------------	--	---------------	------------	--	---------------------------	-----------------------	------------------

HRS HIROSE ELECTRIC CO., LTD.	APPROVED : NK. NINOMIYA	20210820	DRAWING NO. PART NO. CODE NO.	CFL-2LPP-044**TSH-A-L	
	CHECKED : MT. KANEKO	20210820			
	DESIGNED : MS. MATSUMOTO	20210820			
	DRAWN : MS. MATSUMOTO	20210820			