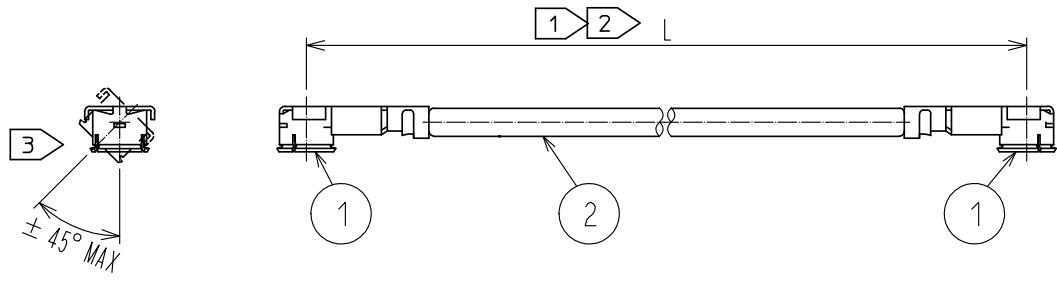


Nov.1.2024 Copyright 2024 HIROSE ELECTRIC CO., LTD. All Rights Reserved.
In case of consideration for using Automotive equipment / device which demand high reliability, kindly contact our sales window correspondents.



Part No.	Cable color
~084N1~	White
~084N2~	Black
~084N4~	Blue

NOTE ① We indicate the length of the harness on the last of product name, 'L' part.

② Tolerance for [L]

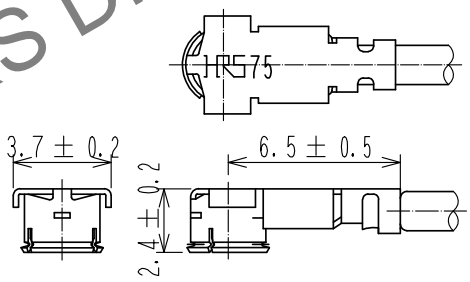
Length L [mm]	Tolerance [mm]
$35 \leq L \leq 200$	± 4
$200 < L \leq 500$	± 8
$500 < L \leq 1000$	± 12
$1000 < L$	$\pm 1.5\%$

③ Connector rotation angle is within ± 45 degree from the above image.
For long length in the case of $L > 500$, the angle is optional.

4. Specifications are subject to change without notice.

HRS DRAWING FOR REFERENCE

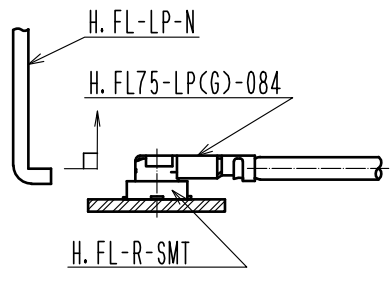
[DIMENSIONS OF CONNECTOR]



For stable supply of this series, material supplier of piece part#1 will be changed during 2019-2022. Please note this change in advance. There will be no difference in product performance and quality. ⚠

[PRECAUTIONS FOR HANDLING]

- ◆ Connector insertion and extraction
 - a. Connector shall be extracted vertically by specialised extraction JIG.
Part No. : H.FL-LP-NCCL Code: CL331-0551-7)
Never hold the cable when extracting the cable because it damages the connector.
 - b. Insert the connector as perpendicularly to the mating surface as possible by aligning the mating axes of both connectors. Do not excessively slant the connectors when inserting.



1	H.FL75-LP(G)-084	CL331-0808-1	2	1.5Dia. coaxial cable
NO.	PART NO.	CODE NO.	NO.	PART NO.
UNITS mm		SCALE FREE	COUNT 1	DESCRIPTION OF REVISIONS DIS-D-00003769
DESIGNED MS. MATSUMOTO		CHECKED MT. KANEKO		DATE 20181218
HIROSE ELECTRIC CO., LTD.		APPROVED : NK. NINOMIYA	20161108	DRAWING NO. EDC-373598-00-00
		CHECKED : NK. NINOMIYA	20161108	PART NO. H.FL75-2LPG-084N*-A-L ①
		DESIGNED : KS. TAKAHASHI	20161108	CODE NO. CL321-5111-4-00 ⚠ 1/1
		DRAWN : KS. TAKAHASHI	20161108	