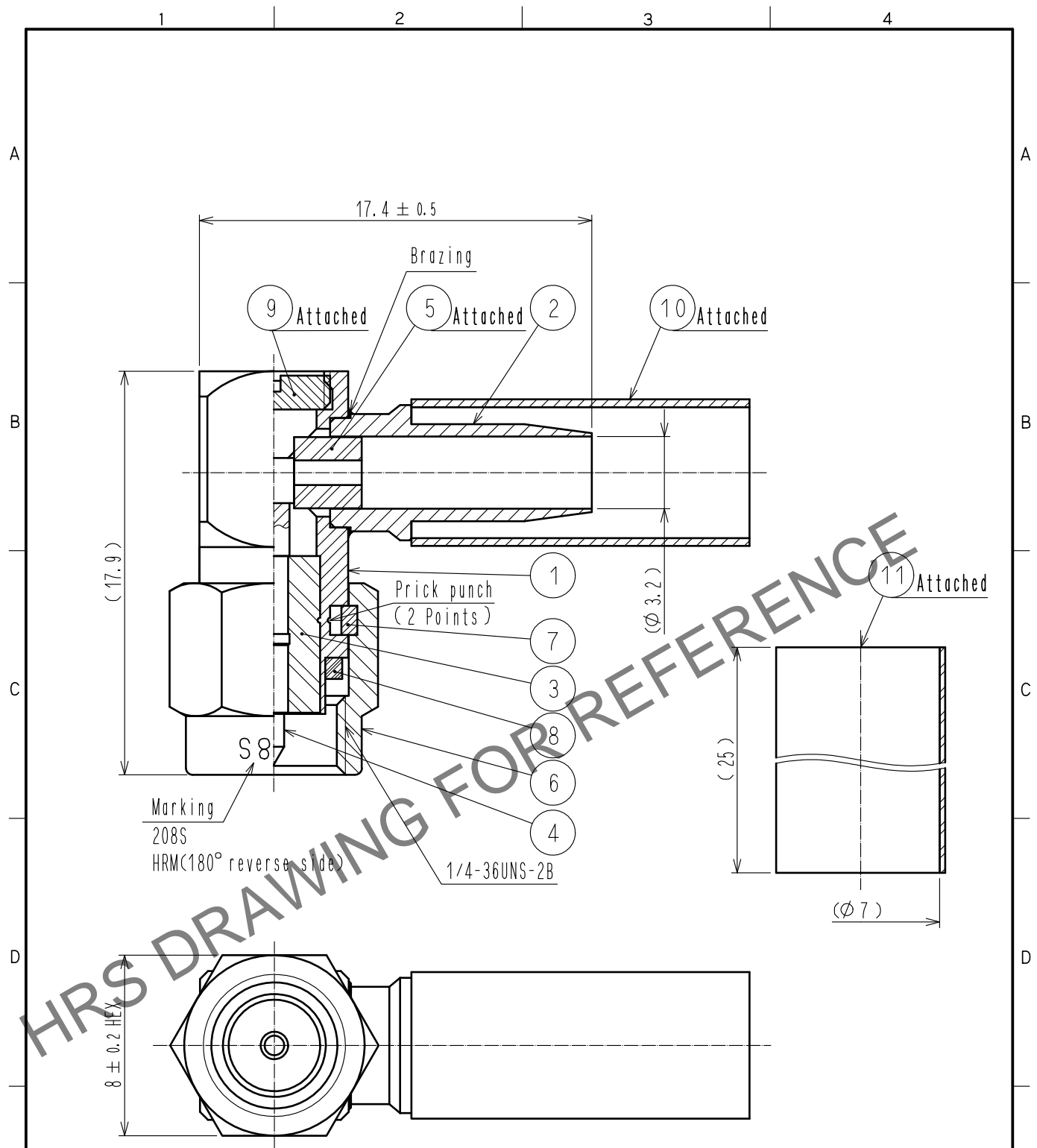


Mar.1.2026 Copyright 2026 HIROSE ELECTRIC CO., LTD. All Rights Reserved.
 In case of consideration for using Automotive equipment / device which demand high reliability, kindly contact our sales window correspondents.



NO.	MATERIAL	FINISH .	REMARKS	NO.	MATERIAL	FINISH .	REMARKS
6	STAINLESS STEEL	PASSIVATE		11	POLYOLEFIN		HEAT SHRINK TUBING<GRAY>
5	PTFE			10	COPPER		NICKEL PLATING
4	BRASS	GOLD PLATING		9	BRASS		NICKEL PLATING
3	PTFE			8	SILICONE RUBBER		
2	STAINLESS STEEL	NICKEL PLATING		7	BERYLLIUM COPPER		NICKEL PLATING
1	STAINLESS STEEL	NICKEL PLATING					

UNITS mm		SCALE 4 : 1	COUNT 	DESCRIPTION OF REVISIONS	DESIGNED	CHECKED	DATE
HIROSE ELECTRIC CO., LTD.				APPROVED : NK. NINOMIYA 20220128 CHECKED : NK. NINOMIYA 20220128 DESIGNED : MT. KANEKO 20220128 DRAWN : YK. MITSUISHI 20220128	DRAWING NO. EDC-007157-40-00 PART NO. HRM-208S(40) CODE NO. CL0323-0119-1-40		