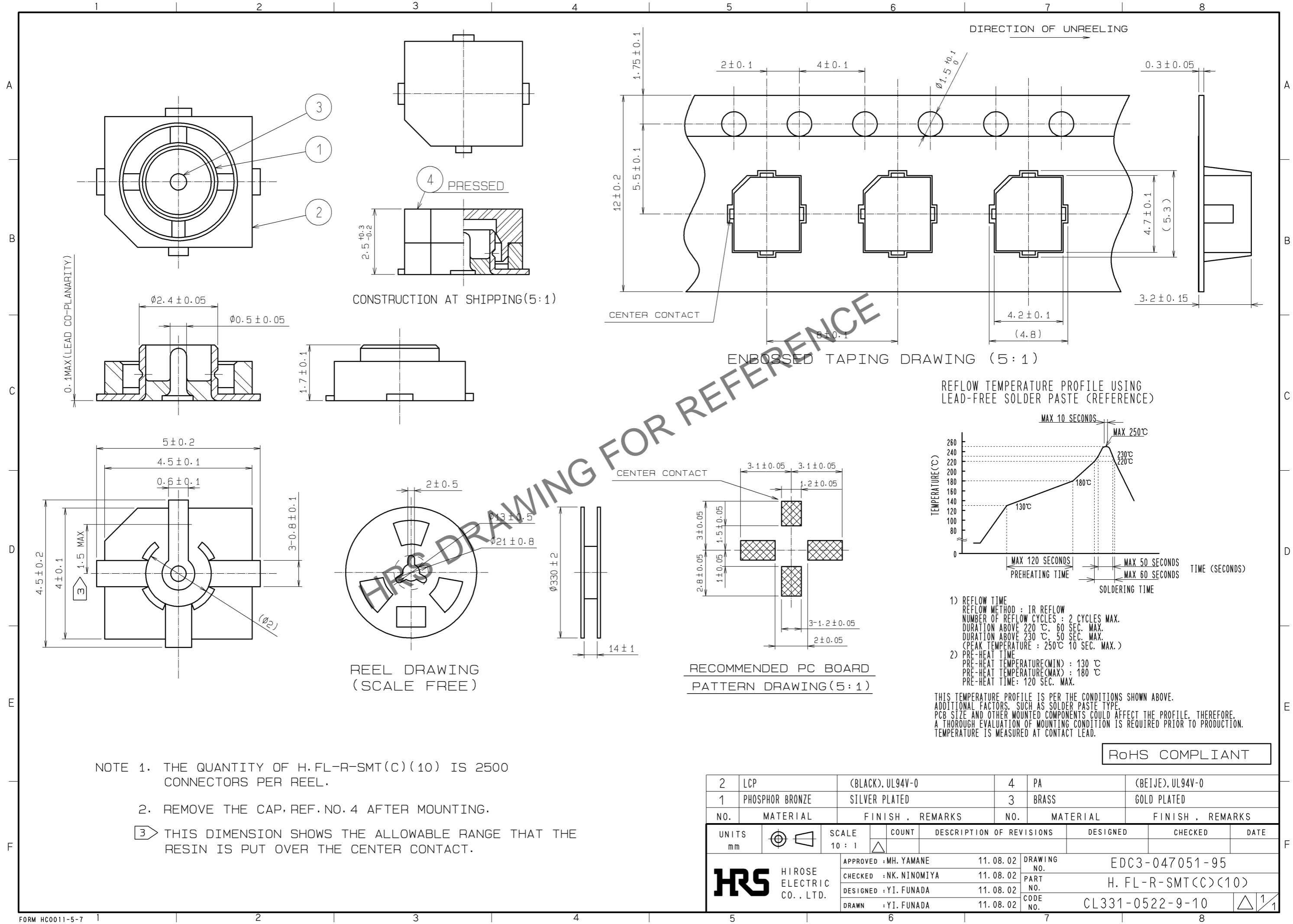
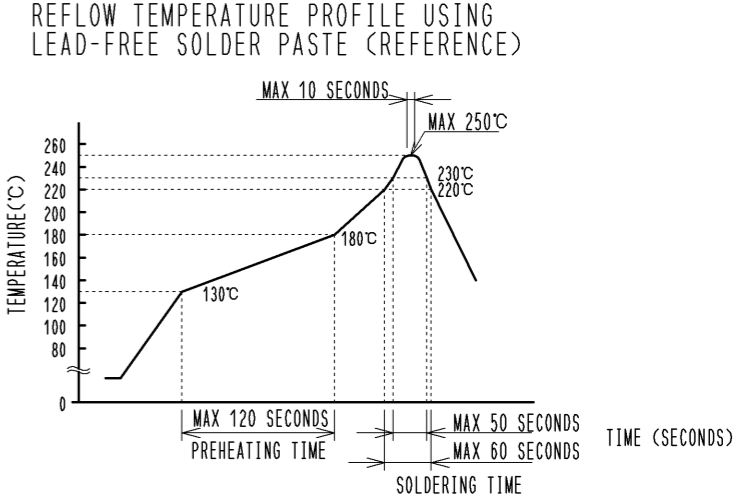


Feb.1.2024 Copyright 2024 HIROSE ELECTRIC CO., LTD. All Rights Reserved.
 In case of consideration for using Automotive equipment / device which demand high reliability, kindly contact our sales window correspondents.



NOTE 1. THE QUANTITY OF H. FL-R-SMT(C)(10) IS 2500 CONNECTORS PER REEL.
 2. REMOVE THE CAP, REF. NO. 4 AFTER MOUNTING.
 [3] THIS DIMENSION SHOWS THE ALLOWABLE RANGE THAT THE RESIN IS PUT OVER THE CENTER CONTACT.



- 1) REFLOW TIME
 REFLOW METHOD : IR REFLOW
 NUMBER OF REFLOW CYCLES : 2 CYCLES MAX.
 DURATION ABOVE 220 °C : 60 SEC. MAX.
 DURATION ABOVE 230 °C : 50 SEC. MAX.
 (PEAK TEMPERATURE : 250°C 10 SEC. MAX.)
- 2) PRE-HEAT TIME
 PRE-HEAT TEMPERATURE(MIN) : 130 °C
 PRE-HEAT TEMPERATURE(MAX) : 180 °C
 PRE-HEAT TIME: 120 SEC. MAX.

THIS TEMPERATURE PROFILE IS PER THE CONDITIONS SHOWN ABOVE.
 ADDITIONAL FACTORS, SUCH AS SOLDER PASTE TYPE,
 PCB SIZE AND OTHER MOUNTED COMPONENTS COULD AFFECT THE PROFILE, THEREFORE,
 A THOROUGH EVALUATION OF MOUNTING CONDITION IS REQUIRED PRIOR TO PRODUCTION.
 TEMPERATURE IS MEASURED AT CONTACT LEAD.

RoHS COMPLIANT

2	LCP	(BLACK).UL94V-0	4	PA	(BEIJE).UL94V-0
1	PHOSPHOR BRONZE	SILVER PLATED	3	BRASS	GOLD PLATED
NO.	MATERIAL	FINISH . REMARKS	NO.	MATERIAL	FINISH . REMARKS
UNITS mm		SCALE 10 : 1	COUNT 	DESCRIPTION OF REVISIONS	DESIGNED
	HIROSE ELECTRIC CO., LTD.	APPROVED : MH. YAMANE	11.08.02	DRAWING NO.	EDC3-047051-95
		CHECKED : NK. NINOMIYA	11.08.02	PART NO.	H. FL-R-SMT(C)(10)
		DESIGNED : YI. FUNADA	11.08.02	CODE NO.	CL331-0522-9-10
		DRAWN : YI. FUNADA	11.08.02		