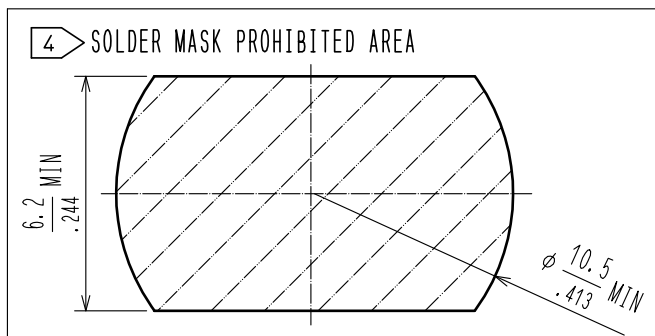
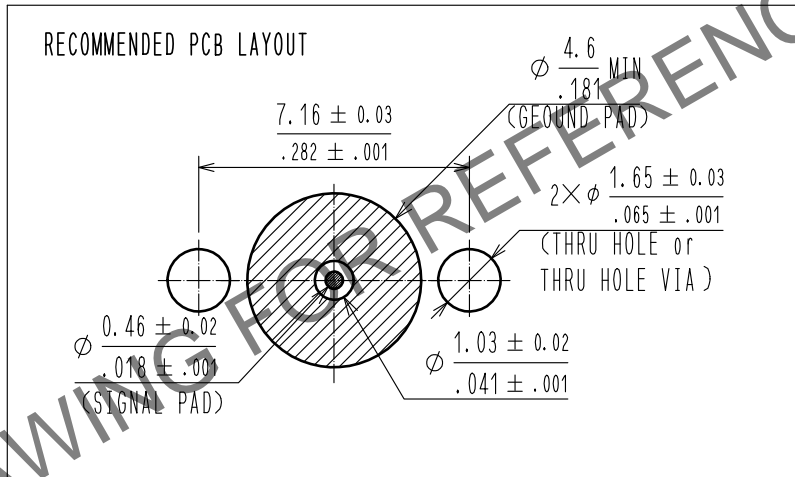
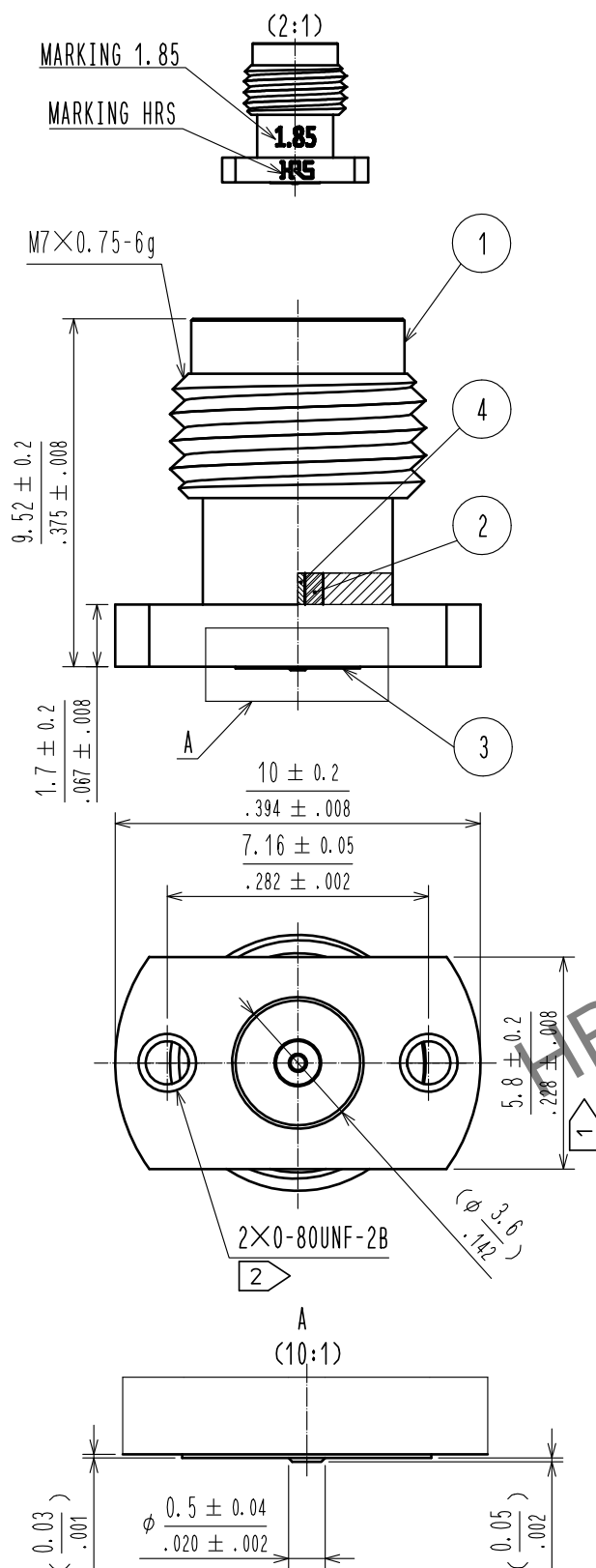
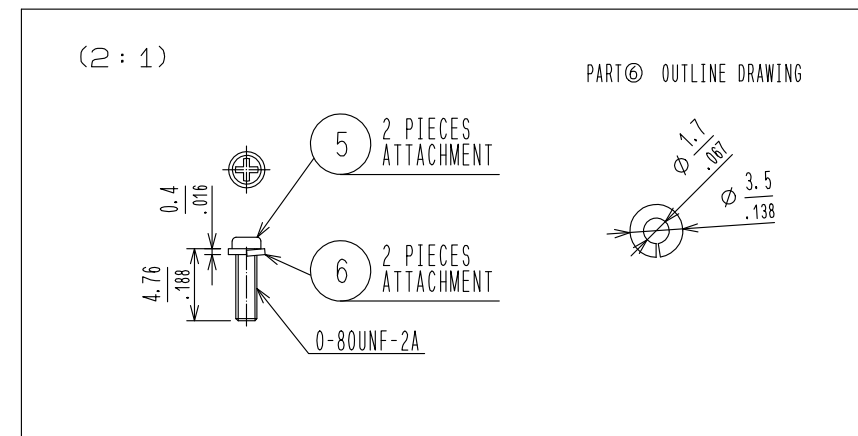
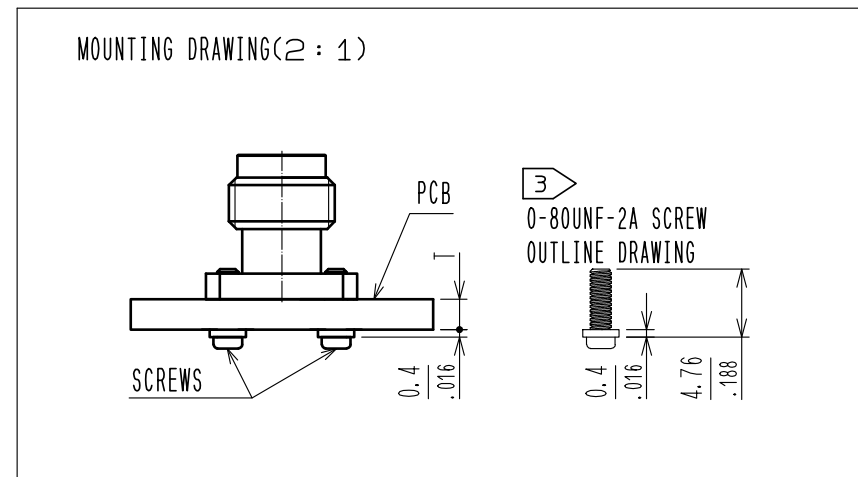


May.1.2024 Copyright 2024 HIROSE ELECTRIC CO., LTD. All Rights Reserved.
In case of consideration for using Automotive equipment / device which demand high reliability, kindly contact our sales window correspondents.



- PLEASE HOLD THE FLANGE WITH A SPANNER WHEN MATING THE CONNECTOR TO AVOID ANY TORQUE ACTING ON THE PCB.
- 0-80UNF-2B SCREWS TIGHTENING TORQUE SHOULD BE 0.09N · m. PLEASE TIGHTEN THE SCREWS EVENLY WHEN MOUNTING THE CONNECTORS TO ENSURE STABLE ELECTRICAL CONTACT.
- PLEASE USE ATTACHED SCREWS AND WASHERS FOR MOUNTING. ATTACHED SCREWS AND WASHERS ARE APPLICABLE ON PCB WITH THICKNESS T=1.0 TO 2.65mm.
- THE SOLDER MASK PROHIBITED AREA IS INDICATED.
- LAND PATTERN AND VIA LAYOUT DEPENDS ALSO ON ELECTRIC CONSTANT, THICKNESS AND LAYER CONSTRUCTION OF PCB. FOR BETTER RF PERFORMANCE, EM SIMULATION OF PCB WITH CONNECTOR IS RECOMMENDED.
- THIS PRODUCT IS A SOLDERLESS MOUNTED CONNECTOR FOR PROTOTYPE EVALUATION OF HIGH SPEED TRANSMISSION BOARDS. IT IS NOT RECOMMENDED FOR USE IN ACTUAL COMMERCIAL EQUIPMENT.



3	STAINLESS STEEL	GOLD PLATING	6	STAINLESS STEEL	SPRING WASHER
2	PTFE		5	STEEL	0-80UNF-A SCREW
1	STAINLESS STEEL	PASSIVATE	4	BERYLLIUM COPPER	GOLD PLATING
NO.	MATERIAL	FINISH . REMARKS	NO.	MATERIAL	FINISH . REMARKS
UNITS mm		SCALE 5 : 1	COUNT 1	DESCRIPTION OF REVISIONS DIS-D-00016663	DESIGNED RO. YOKOYAMA
HIROSE ELECTRIC CO., LTD.		APPROVED : TS. NOBE	20190108	DRAWING NO.	EDC-380932-12-00
		CHECKED : MH. OGUSU	20190108	PART NO.	HV-R-SR2(12)
		DESIGNED : AH. MARUYAMA	20190108	CODE NO.	CL0338-0010-0-12
		DRAWN : AH. MARUYAMA	20190108		
		DATE	20230818		