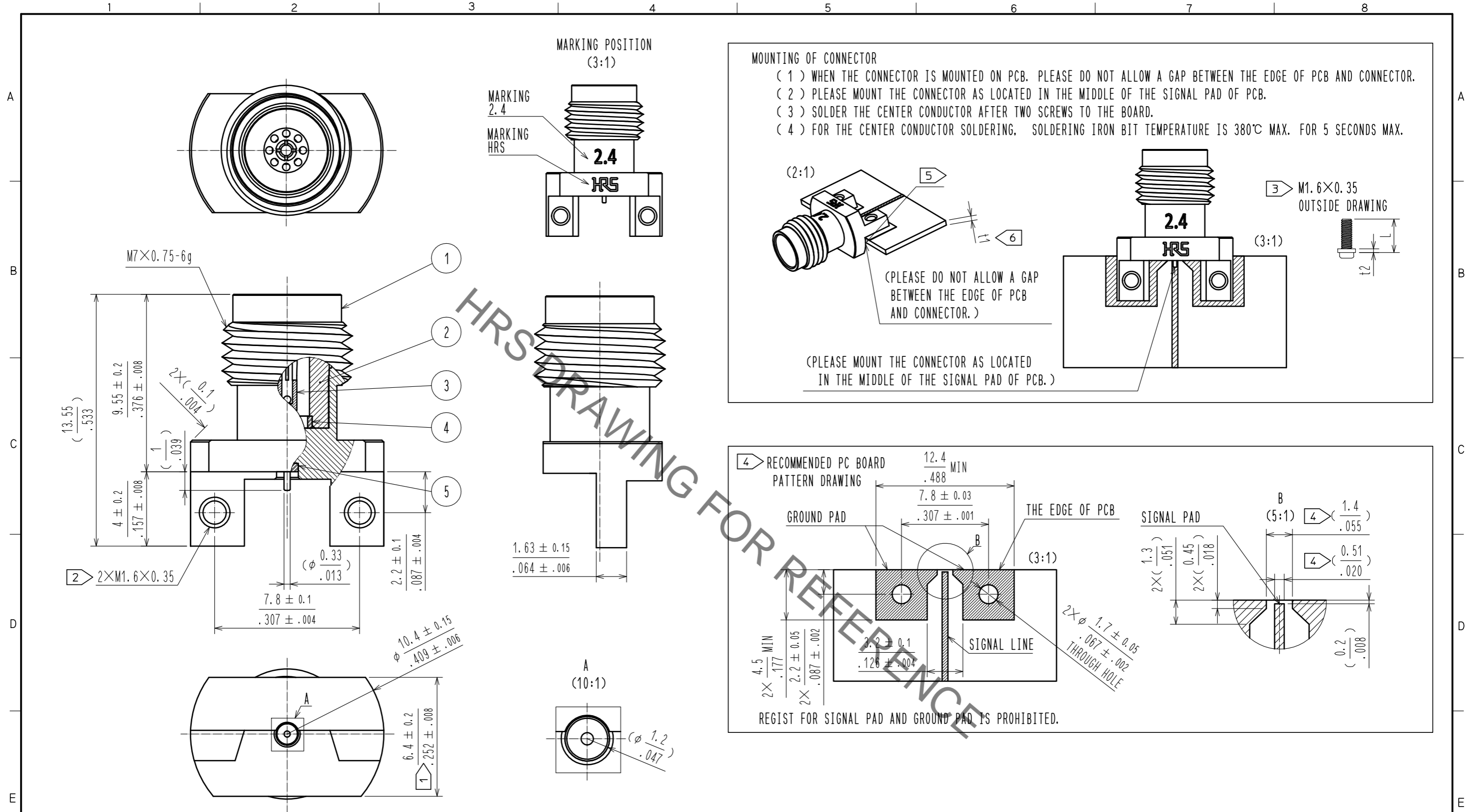
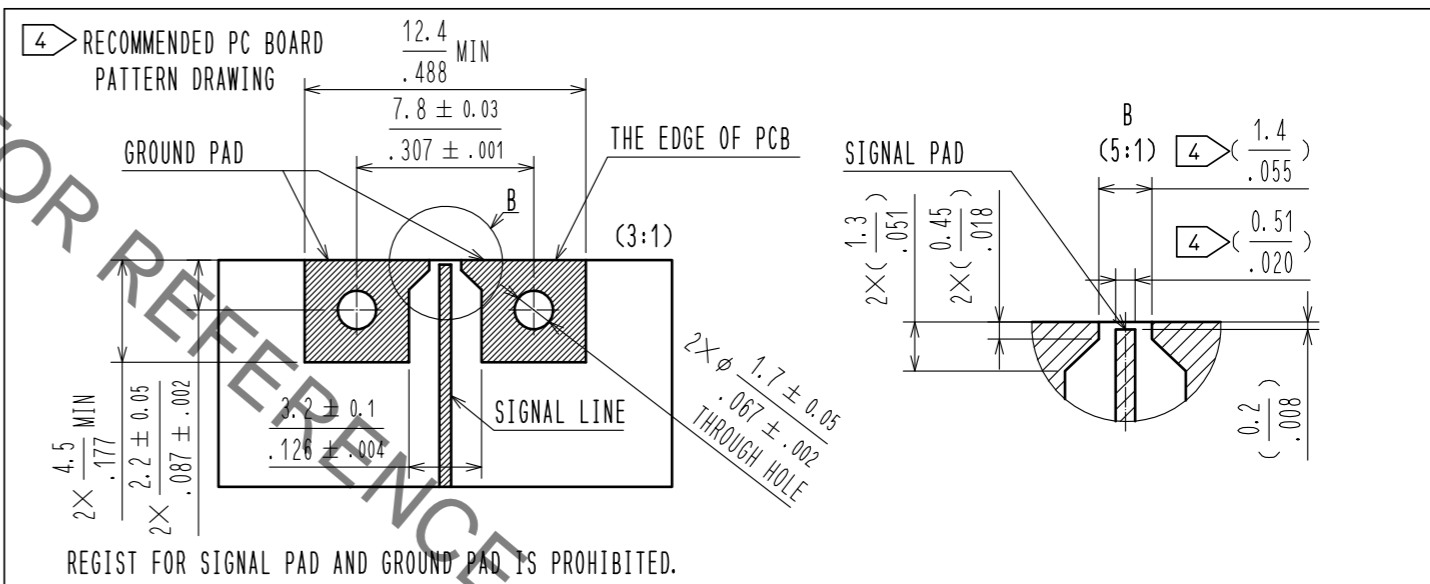


Apr.1.2022 Copyright 2022 HIROSE ELECTRIC CO., LTD. All Rights Reserved.  
In case of consideration for using Automotive equipment / device which demand high reliability, kindly contact our sales window correspondents.



MOUNTING OF CONNECTOR  
 ( 1 ) WHEN THE CONNECTOR IS MOUNTED ON PCB, PLEASE DO NOT ALLOW A GAP BETWEEN THE EDGE OF PCB AND CONNECTOR.  
 ( 2 ) PLEASE MOUNT THE CONNECTOR AS LOCATED IN THE MIDDLE OF THE SIGNAL PAD OF PCB.  
 ( 3 ) SOLDER THE CENTER CONDUCTOR AFTER TWO SCREWS TO THE BOARD.  
 ( 4 ) FOR THE CENTER CONDUCTOR SOLDERING, SOLDERING IRON BIT TEMPERATURE IS 380°C MAX. FOR 5 SECONDS MAX.



- NOTES
- 1 WHEN MATING THE CONNECTOR, PLEASE HOLD MILLING AREA OF 6.4±0.2 WITH A WRENCH.
  - 2 M1.6×0.35 SCREW TIGHTENING TORQUE IS 0.09 N·m. PLEASE TIGHTEN THE SCREWS EVENLY WHEN MOUNTING THE CONNECTORS TO ENSURE STABLE ELECTRICAL CONTACT.
  - 3 PLEASE USE A PCB MOUNTING SCREW OF THE LENGTH OF L(mm). THE LENGTH OF L(mm) IS PCB THICKNESS t1(mm) + SPRING WASHER THICKNESS t2(mm) + 1.8(mm). PLEASE USE A SCREW WITH SPRING WASHER.
  - 4 THE INDICATED DIMENSION IS THE CASE OF WHICH DIELECTRIC CONSTANT OF SUBSTRATE IS 3.6 AND THICKNESS IS t=0.25mm. LAND PATTERN LAYOUT DEPENDS ALSO ON ELECTRIC CONSTANT, THICKNESS AND LAYER CONSTRUCTION OF PCB. FOR BETTER PERFORMANCE, SIMULATION OF PCB WITH CONNECTOR IS RECOMMENDED.
  - 5 SIDE PLATING OF THE BOARD IS RECOMMENDED.
  - 6 RECOMMENDED PCB THICKNESS t1 IS GREATER THAN 1.0mm.

2	STAINLESS STEEL	PASSIVATE	5	POLYETHER IMIDE			
1	BRASS	GOLD PLATING	4	POLYETHER IMIDE			
			3	BERYLLIUM COPPER	GOLD PLATING		
NO.	MATERIAL	FINISH . REMARKS	NO.	MATERIAL	FINISH . REMARKS		
UNITS mm/inch		SCALE 5 : 1	COUNT	DESCRIPTION OF REVISIONS	DESIGNED	CHECKED	DATE
<b>HRS</b> HIROSE ELECTRIC CO., LTD.		APPROVED : NK. NINOMIYA	20201009	DRAWING NO. EDC-381821-00-00			
		CHECKED : NK. NINOMIYA	20201009	PART NO. H2.4-LR-EL			
		DESIGNED : AH. MARUYAMA	20201009	CODE NO. CL338-0012-0-00			
		DRAWN : MS. MATSUMOTO	20201009				