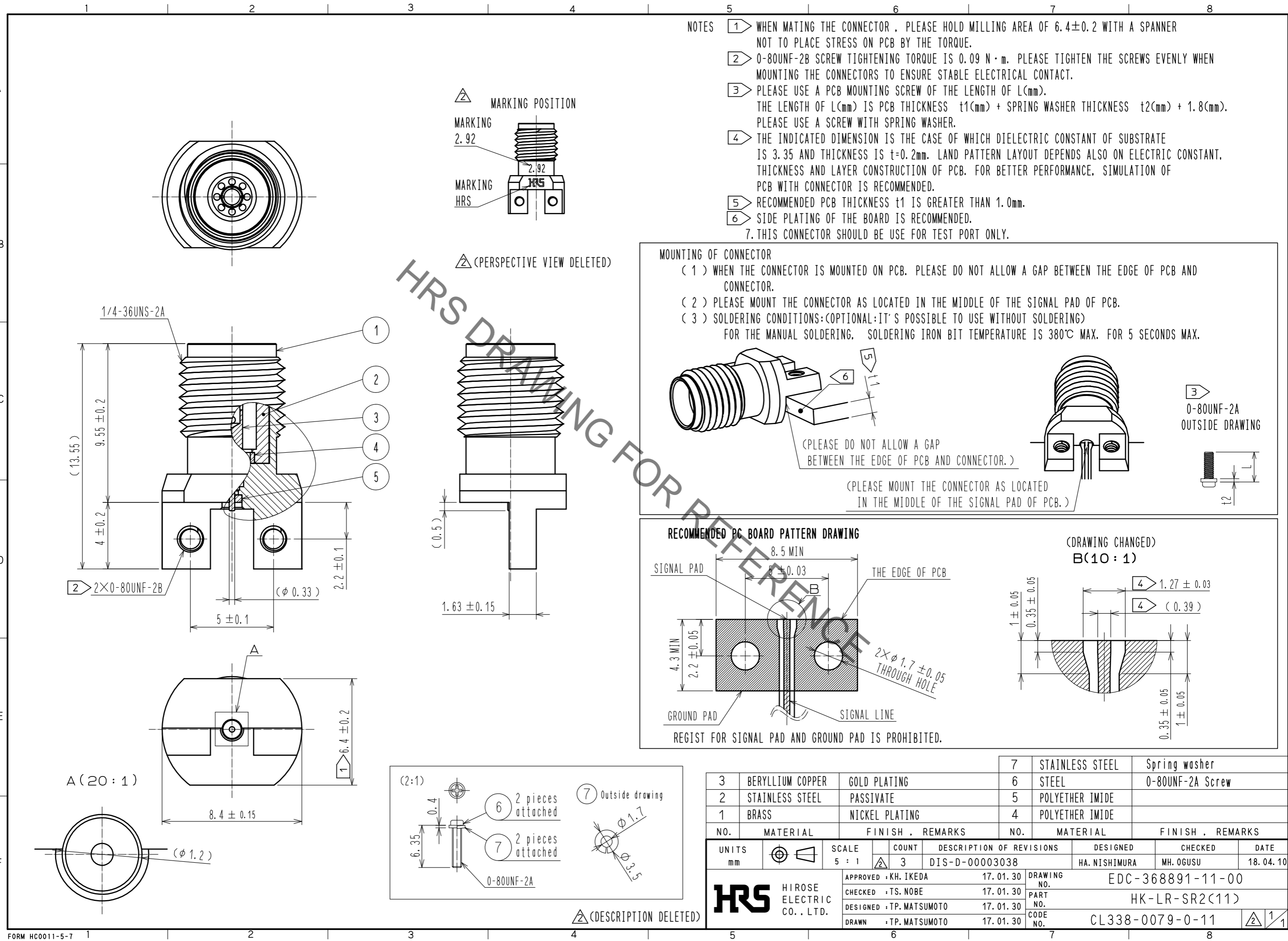
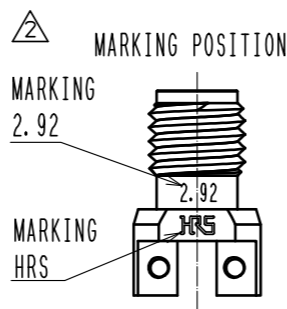


Jun.1.2022 Copyright 2022 HIROSE ELECTRIC CO., LTD. All Rights Reserved.  
In case of consideration for using Automotive equipment / device which demand high reliability, kindly contact our sales window correspondents.



- NOTES
- 1 WHEN MATING THE CONNECTOR, PLEASE HOLD MILLING AREA OF  $6.4 \pm 0.2$  WITH A SPANNER NOT TO PLACE STRESS ON PCB BY THE TORQUE.
  - 2 0-80UNF-2B SCREW TIGHTENING TORQUE IS  $0.09 \text{ N} \cdot \text{m}$ . PLEASE TIGHTEN THE SCREWS EVENLY WHEN MOUNTING THE CONNECTORS TO ENSURE STABLE ELECTRICAL CONTACT.
  - 3 PLEASE USE A PCB MOUNTING SCREW OF THE LENGTH OF L(mm). THE LENGTH OF L(mm) IS PCB THICKNESS  $t_1(\text{mm})$  + SPRING WASHER THICKNESS  $t_2(\text{mm})$  +  $1.8(\text{mm})$ . PLEASE USE A SCREW WITH SPRING WASHER.
  - 4 THE INDICATED DIMENSION IS THE CASE OF WHICH DIELECTRIC CONSTANT OF SUBSTRATE IS 3.35 AND THICKNESS IS  $t=0.2\text{mm}$ . LAND PATTERN LAYOUT DEPENDS ALSO ON ELECTRIC CONSTANT, THICKNESS AND LAYER CONSTRUCTION OF PCB. FOR BETTER PERFORMANCE, SIMULATION OF PCB WITH CONNECTOR IS RECOMMENDED.
  - 5 RECOMMENDED PCB THICKNESS  $t_1$  IS GREATER THAN  $1.0\text{mm}$ .
  - 6 SIDE PLATING OF THE BOARD IS RECOMMENDED.
  7. THIS CONNECTOR SHOULD BE USE FOR TEST PORT ONLY.



(PERSPECTIVE VIEW DELETED)

MOUNTING OF CONNECTOR

- (1) WHEN THE CONNECTOR IS MOUNTED ON PCB. PLEASE DO NOT ALLOW A GAP BETWEEN THE EDGE OF PCB AND CONNECTOR.
- (2) PLEASE MOUNT THE CONNECTOR AS LOCATED IN THE MIDDLE OF THE SIGNAL PAD OF PCB.
- (3) SOLDERING CONDITIONS: (OPTIONAL: IT'S POSSIBLE TO USE WITHOUT SOLDERING) FOR THE MANUAL SOLDERING, SOLDERING IRON BIT TEMPERATURE IS  $380^\circ\text{C}$  MAX. FOR 5 SECONDS MAX.

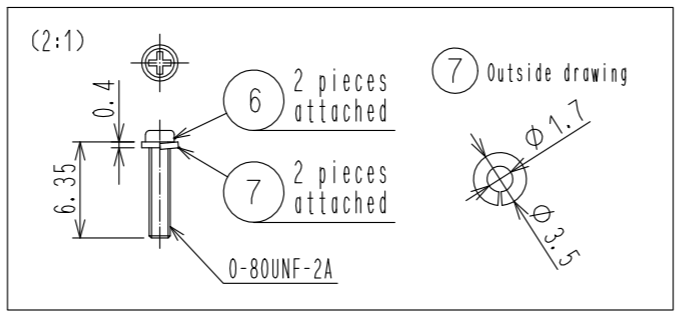
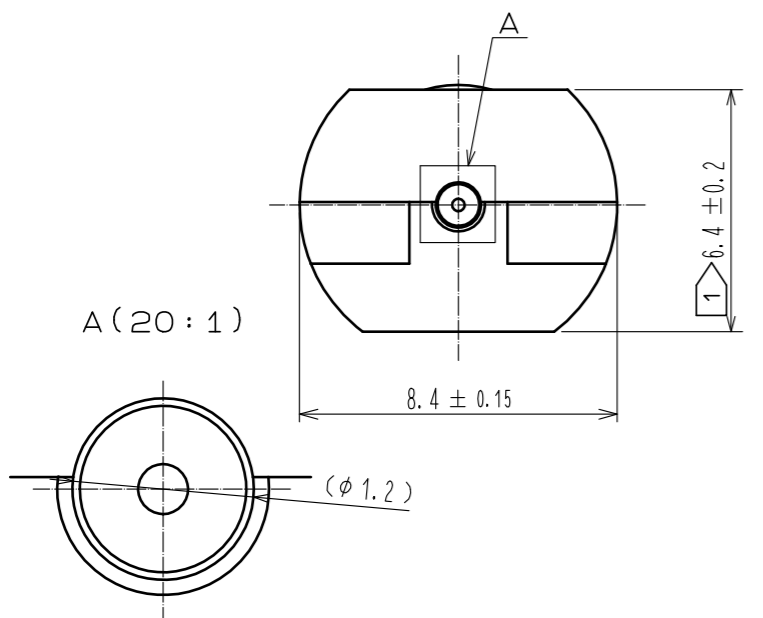
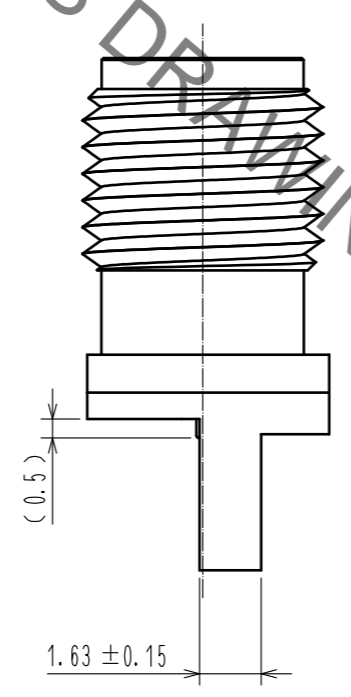
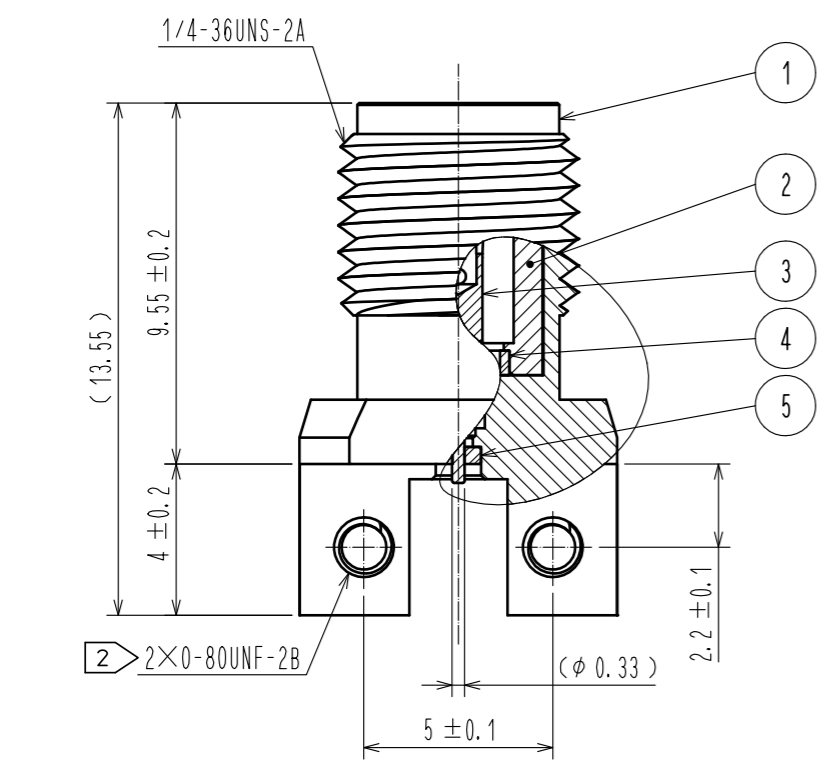
(PLEASE MOUNT THE CONNECTOR AS LOCATED IN THE MIDDLE OF THE SIGNAL PAD OF PCB.)

0-80UNF-2A OUTSIDE DRAWING

RECOMMENDED PCB BOARD PATTERN DRAWING

(DRAWING CHANGED) B(10:1)

REGIST FOR SIGNAL PAD AND GROUND PAD IS PROHIBITED.



3	BERYLLIUM COPPER	GOLD PLATING	7	STAINLESS STEEL	Spring washer			
2	STAINLESS STEEL	PASSIVATE	6	STEEL	0-80UNF-2A Screw			
1	BRASS	NICKEL PLATING	5	POLYETHER IMIDE				
NO.	MATERIAL	FINISH . REMARKS	NO.	MATERIAL	FINISH . REMARKS			
UNITS	mm	SCALE	5 : 1	COUNT	3			
DESCRIPTION OF REVISIONS			DESIGNED	HA. NISHIMURA	CHECKED	MH. OGUSU	DATE	18. 04. 10
DIS-D-00003038			APPROVED	KH. IKEDA	17. 01. 30	DRAWING NO.		EDC-368891-11-00
			CHECKED	TS. NOBE	17. 01. 30	PART NO.		HK-LR-SR2(11)
			DESIGNED	TP. MATSUMOTO	17. 01. 30	CODE NO.		CL338-0079-0-11
			DRAWN	TP. MATSUMOTO	17. 01. 30			