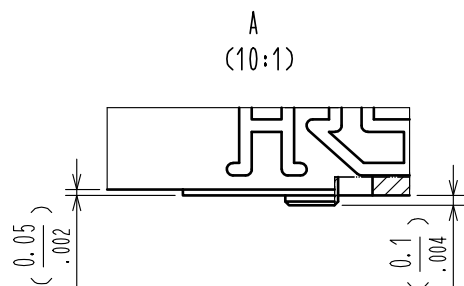
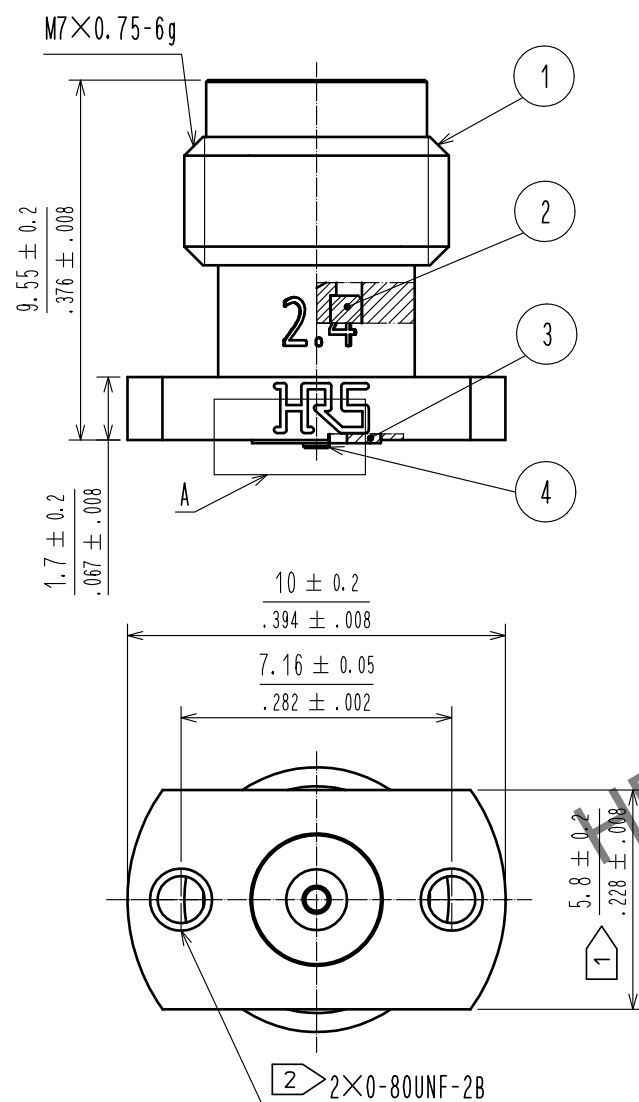
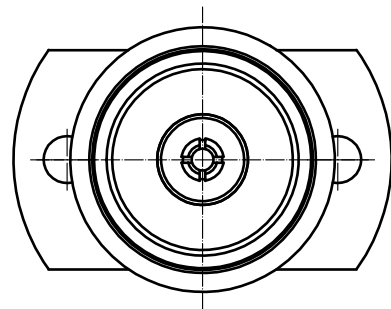
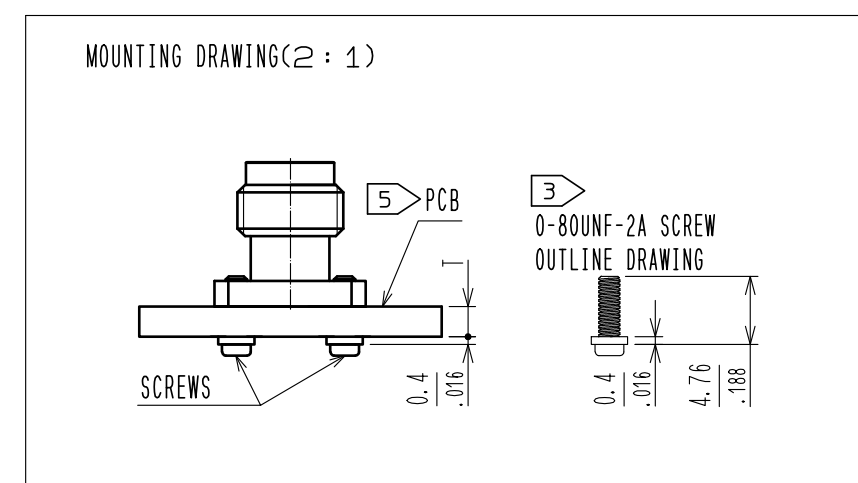
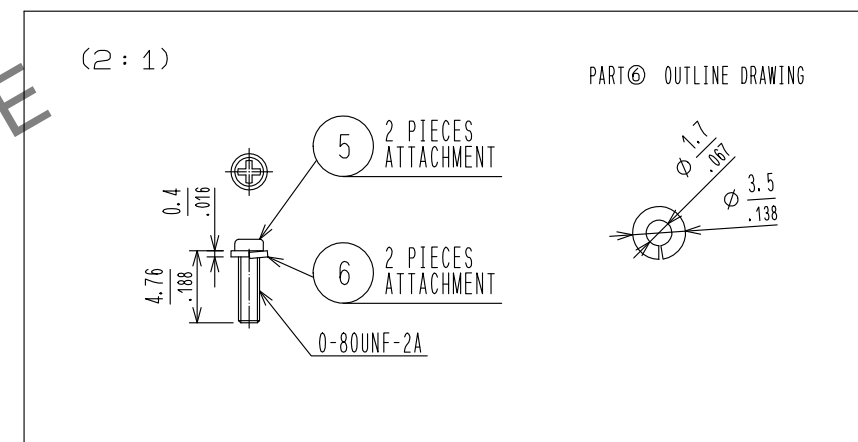
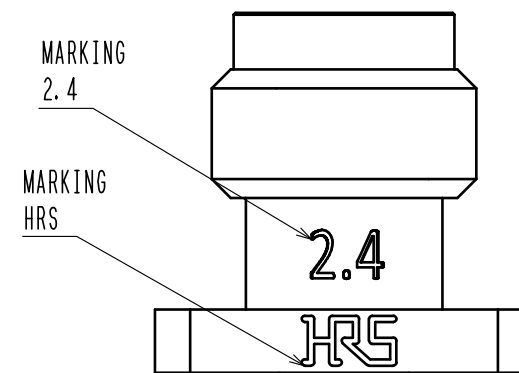
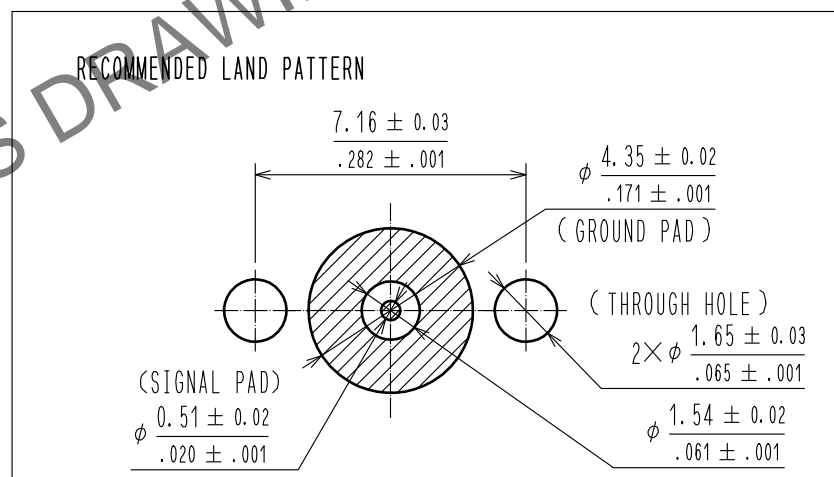
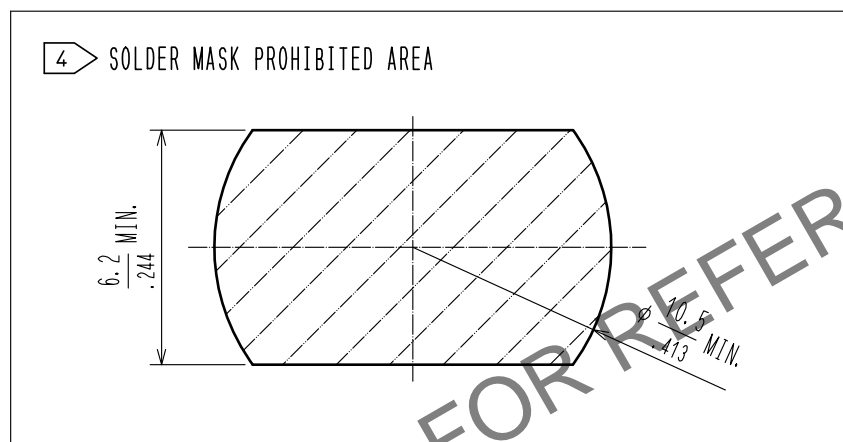
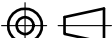
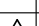



Mar.1.2024 Copyright 2024 HIROSE ELECTRIC CO., LTD. All Rights Reserved.
In case of consideration for using Automotive equipment / device which demand high reliability, kindly contact our sales window correspondents.



- NOTES
- PLEASE HOLD THE FLANGE WITH A SPANNER WHEN MATING THE CONNECTOR TO AVOID ANY TORQUE ACTING ON THE PCB.
 - 0-80UNF-2B SCREWS TIGHTENING TORQUE SHOULD BE $0.09\text{N} \cdot \text{m}$.
PLEASE TIGHTEN THE SCREWS EVENLY WHEN MOUNTING THE CONNECTORS TO ENSURE STABLE ELECTRICAL CONTACT.
 - PLEASE USE ATTACHED SCREWS AND WASHERS FOR MOUNTING.
ATTACHED SCREWS AND WASHERS ARE APPLICABLE ON PCB WITH THICKNESS $T=1.0$ TO 2.65mm .
 - THE SOLDER MASK PROHIBITED AREA IS INDICATED.
5. THIS PRODUCT IS A SOLDERLESS CONNECTOR FOR PROTOTYPE EVALUATION OF HIGH SPEED TRANSMISSION BOARDS.
IT IS NOT RECOMMENDED FOR USE IN ACTUAL COMMERCIAL EQUIPMENT.



3	BERYLLIUM COPPER	GOLD PLATING		6	STAINLESS STEEL	SPRING WASHER				
2	PTFE			5	STEEL	0-80UNF-2A SCREW				
1	STAINLESS STEEL	PASSIVATE		4	STAINLESS STEEL	GOLD PLATING				
NO.	MATERIAL	FINISH. REMARKS		NO.	MATERIAL	FINISH. REMARKS				
UNITS mm/inch				SCALE 5 : 1		COUNT 1	DESCRIPTION OF REVISIONS DIS-D-00016641	DESIGNED TS. KANEKO	CHECKED TS. NAKAGAWA	DATE 20230824
		APPROVED : TS. NOBE		20180425		DRAWING NO. EDC-381620-12-00				
		CHECKED : MH. OGUSU		20180425		PART NO. H2. 4-R-SR2-1(12)				
		DESIGNED : AH. MARUYAMA		20180425		CODE NO. CL0338-0607-0-12				
		DRAWN : EDWIN TANG		20180425		