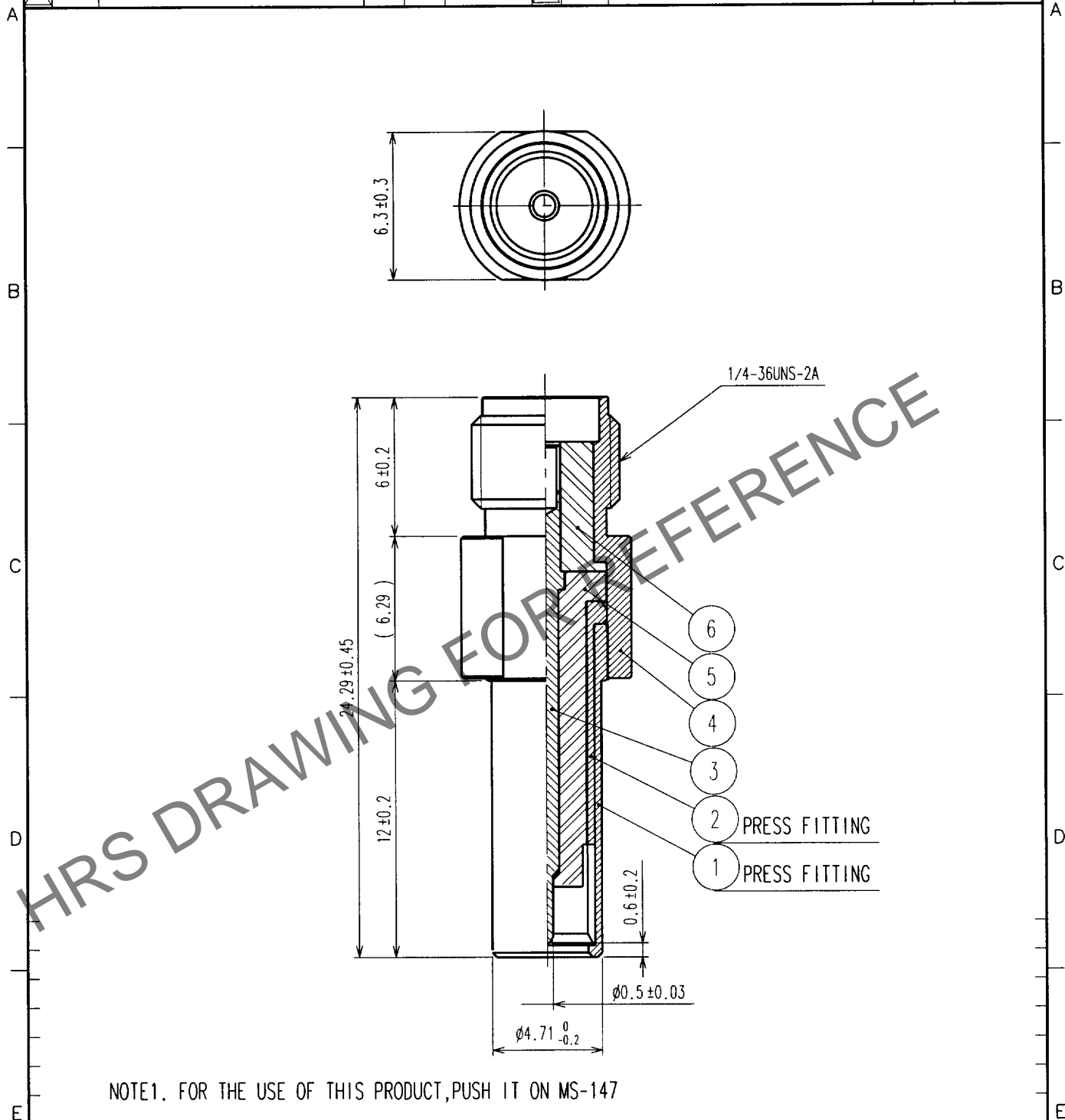


May.1.2024 Copyright 2024 HIROSE ELECTRIC CO., LTD. All Rights Reserved.  
In case of consideration for using Automotive equipment / device which demand high reliability, kindly contact our sales window correspondents.

1					2					3					4				
COUNT	DESCRIPTION OF REVISIONS				BY	CHKD	DATE			COUNT	DESCRIPTION OF REVISIONS				BY	CHKD	DATE		
△							..			△							.		
△										△							.		
△										△							.		



NOTE1. FOR THE USE OF THIS PRODUCT, PUSH IT ON MS-147

3	BERYLLIUM COPPER	GOLD	6	PTFE	
2	PHOSPHOR BRONZE	NICKEL	5	PTFE	
1	PHOSPHOR BRONZE	NICKEL	4	STAINLESS STEEL	PASSIVATED
NO.	MATERIAL	FINISH, REMARKS	NO.	MATERIAL	FINISH, REMARKS

CODE NO. (OLD)		DRAWN	DESIGNED	CHECKED	APPROVED	RELEASED
		<i>K. Hida</i>	<i>K. Hida</i>	<i>R. Kano</i>	<i>Y. Miyake</i>	
		77.2.6	77.2.6	77.8.6	77.8.6	

 SACLE 4 : 1 UNITS mm	DRAWING NO.		PART NO.	
	EDC4-180146		MS-147-HRMJ-1	
	HIROSE ELECTRIC CO., LTD.		CODE NO.	
		CL358-0151-8		1/1

TO
RFD