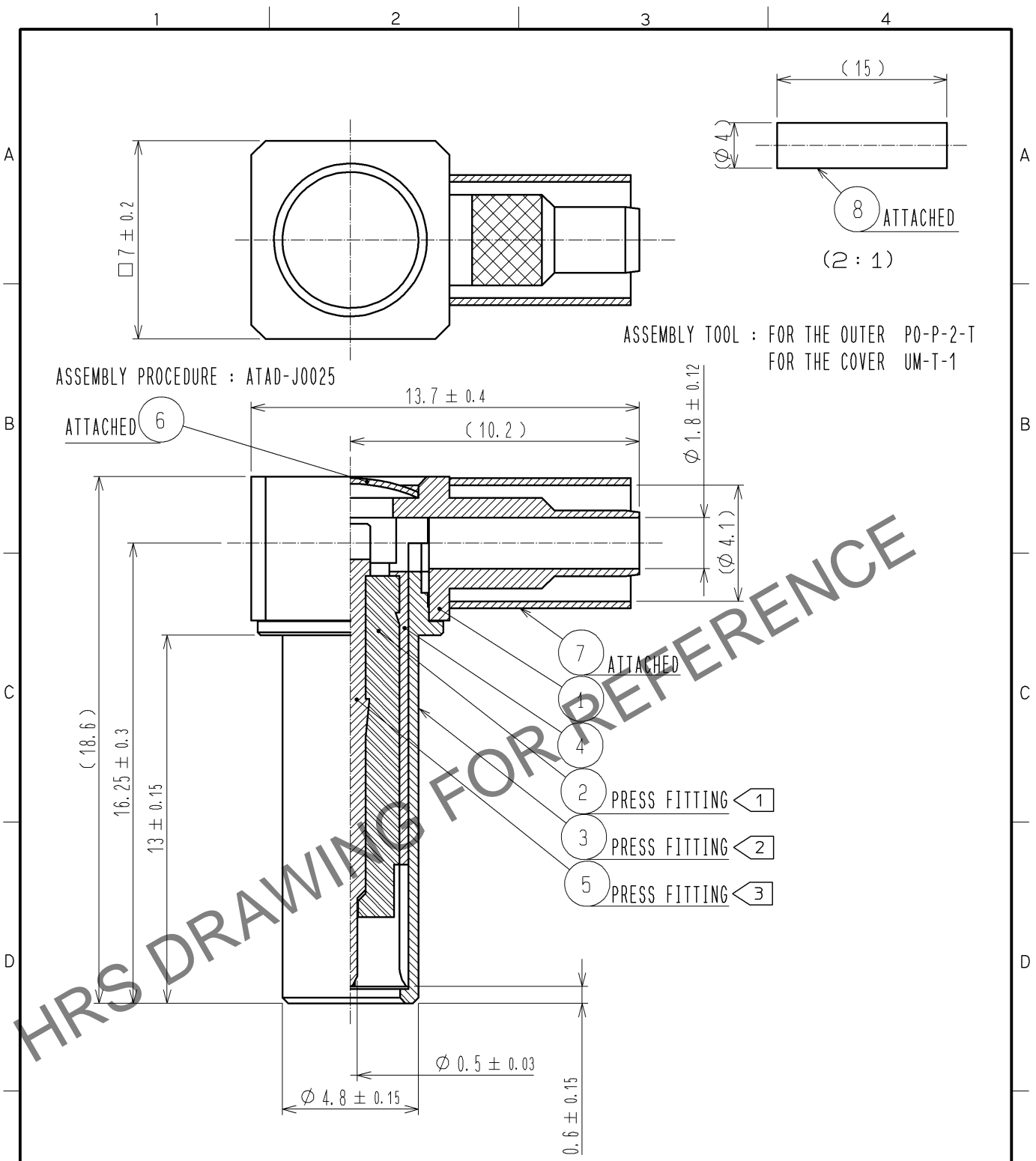


Apr.1.2025 Copyright 2025 HIROSE ELECTRIC CO., LTD. All Rights Reserved.
 In case of consideration for using Automotive equipment / device which demand high reliability, kindly contact our sales window correspondents.



ASSEMBLY PROCEDURE : ATAD-J0025

ASSEMBLY TOOL : FOR THE OUTER PO-P-2-T
 FOR THE COVER UM-T-1

NOTE 1. This product is intended to be fully mated with MS-147<CL358-0150-5>.
 Please design the mating structure so that it can be retained the fully mated condition.

4	PHOSPHOR BLONZE	NICKEL PLATING	8	POLYOLEFIN	HEAT SHRINK TUBING
3	PHOSPHOR BRONZE	NICKEL PLATING	7	COPPER	NICKEL PLATING
2	PTFE		6	BRASS	NICKEL PLATING
1	BRASS	NICKEL PLATING	5	PHOSPHOR BRONZE	GOLD PLATING
NO.	MATERIAL	FINISH . REMARKS	NO.	MATERIAL	FINISH . REMARKS

UNITS mm		SCALE 5 : 1	COUNT 	DESCRIPTION OF REVISIONS	DESIGNED	CHECKED	DATE
HIROSE ELECTRIC CO., LTD.		APPROVED : KY. SHIMIZU	09. 04. 03	DRAWING NO.	EDC4-180319-01		
		CHECKED : RZ. KANO	09. 04. 03	PART NO.	MS-147-C(LP)-4		
		DESIGNED : RI. SATO	09. 04. 03	CODE NO.	CL358-0182-1-00		
		DRAWN : RI. SATO	09. 04. 03		1/1		