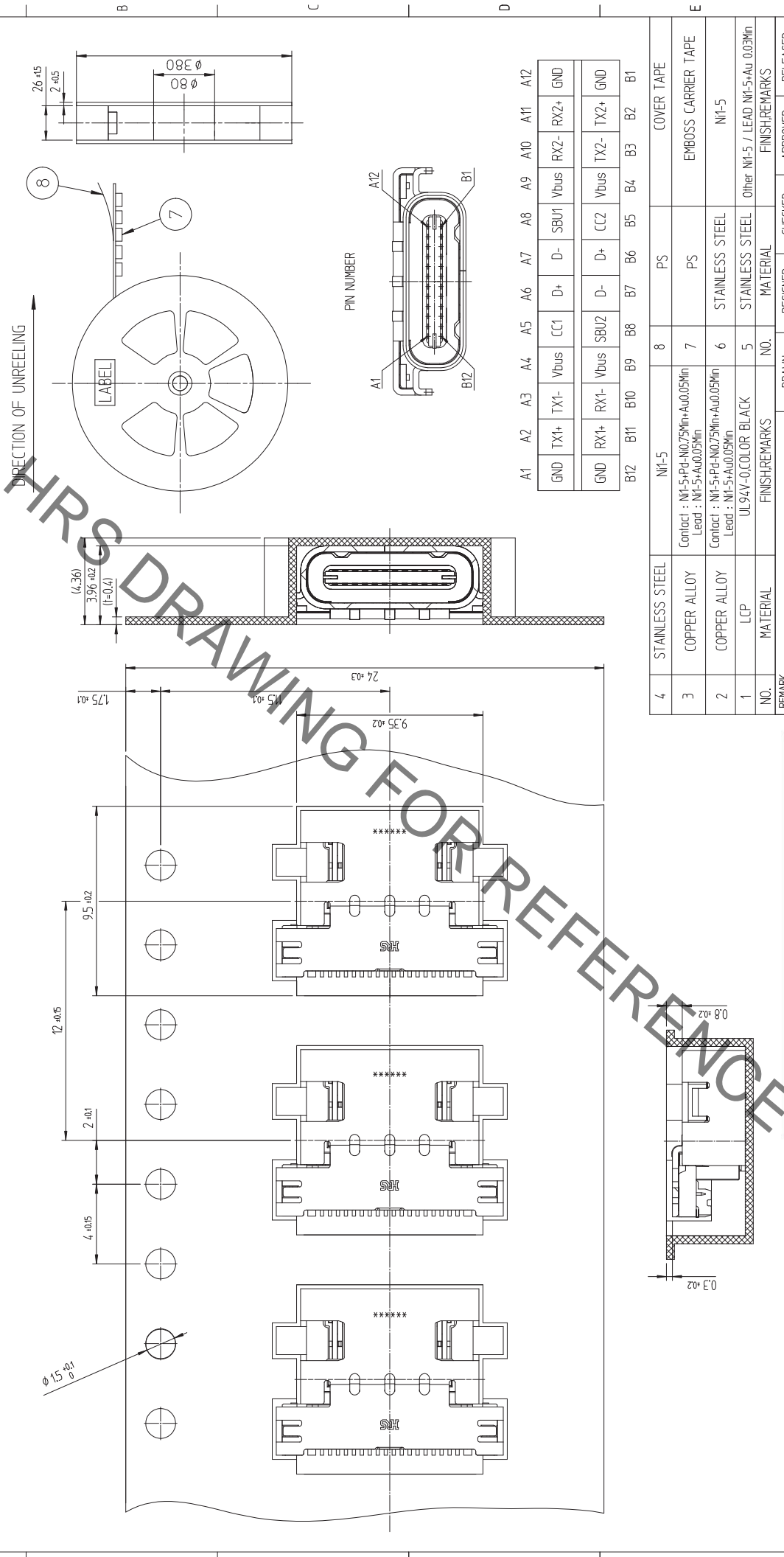


Jun. 1. 2021 Copyright 2021 HIROSE ELECTRIC CO., LTD. All Rights Reserved.
 In case of consideration for using Automotive equipment / device which demand high reliability, kindly contact our sales window correspondents.
 自動車用部品に採用される場合は、高信頼性を要する自動車部品に採用されることを想定し、当社の営業窓口へお問い合わせください。

REV. NO.	DESCRIPTION OF REVISIONS	DATE	COUNT	DESIGNER	CHECKER	DATE	DATE
1							
2							
3							
4							
5							
6							
7							
8							



PIN NUMBER

A1	A2	A3	A4	A5	A6	A7	A8	A9	A10	A11	A12
GND	TX1+	TX1-	Vbus	CC1	D+	D-	SBU1	Vbus	RX2-	RX2+	GND
GND	RX1+	RX1-	Vbus	SBU2	D-	D+	CC2	Vbus	TX2-	TX2+	GND
B12	B11	B10	B9	B8	B7	B6	B5	B4	B3	B2	B1

NO.	MATERIAL	FINISH/REMARKS	NO.	MATERIAL	FINISH/REMARKS
4	STAINLESS STEEL	Ni-5	8	PS	COVER TAPE
3	COPPER ALLOY	Contact : Ni-5+Pd-Ni0.75Min+Au0.05Min Lead : Ni-5+Au0.05Min	7	PS	EMBOSS CARRIER TAPE
2	COPPER ALLOY	Contact : Ni-5+Pd-Ni0.75Min+Au0.05Min Lead : Ni-5+Au0.05Min	6	STAINLESS STEEL	Ni-5
1	LCP	UL94V-0,COLOR BLACK	5	STAINLESS STEEL	Other Ni-5 / LEAD Ni-5+Au 0.03Min

REMARK	DESIGNED	CHECKED	APPROVED	RELEASED
EMBOSS CARRIER TAPE PACKAGING	CELJIM 15.09.04	HJLEE 15.09.04	T.SKANG 15.09.04	ENG 15.12.11 DEPT

DRAWING NO. EDC3-611479
 PART NO. CX70M-24P1
 CODE NO. CL 6240-0002-1

DRAWING FOR REFERENCE
 This is subject to change without notice