


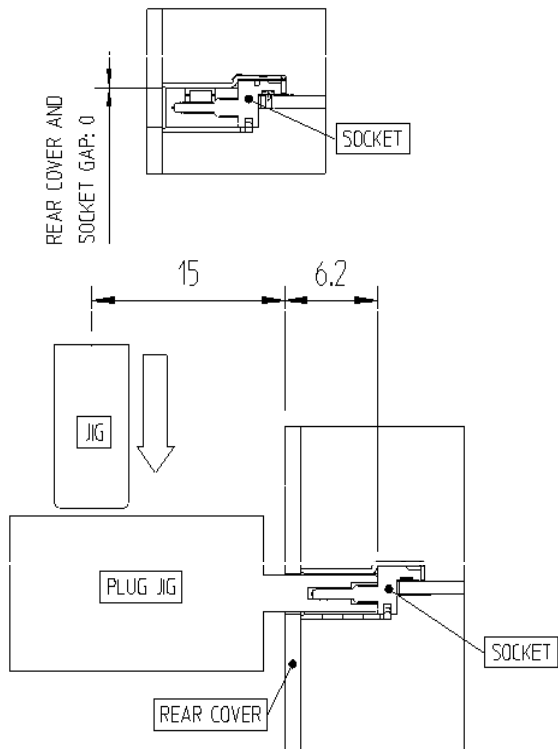
Jan.1.2022 Copyright 2022 HIROSE ELECTRIC CO., LTD. All Rights Reserved.  
In case of consideration for using Automotive equipment / device which demand high reliability, kindly contact our sales window correspondents.

COUNT	DESCRIPTION OF REVISIONS	BY	CHKD	DATE	COUNT	DESCRIPTION OF REVISIONS	BY	CHKD	DATE
△					△				
△					△				
<b>APPLICABLE STANDARD</b>									
RATING	VOLTAGE	20V AC		STORAGE TEMPERATURE RANGE		-10℃ TO +60℃			
	CURRENT	collectively 5A to VBUS pins (A4, A9, B4 B9) and 1.25 A applied to the VCONN pin(B5 of the plug connector) with the return path through the corresponding GND pins(A1,A12,B1,B12) A minimum current of 0.25 A shall also be applied individually to all the other contacts.		OPERATING TEMPERATURE RANGE		-30℃ TO +85℃			
<b>SPECIFICATIONS</b>									
ITEM		TEST METHOD			REQUIREMENTS			QT	AT
<b>CONSTRUCTION</b>									
GENERAL EXAMINATION		VISUALLY AND BY MEASURING INSTRUMENT.			ACCORDING TO DRAWING.			0	0
MARKING		CONFIRMED VISUALLY						0	0
<b>ELECTRICAL CHARACTERISTICS</b>									
CONTACT RESISTANCE		100mA(DC OR 1000Hz)			40 mΩ MAX.			0	-
INSULATION RESISTANCE		500 V DC.			100 MΩ MIN.			0	-
VOLTAGE PROOF		100 V AC FOR 1Min			NO FLASHOVER OR BREAKDOWN				
<b>MECHANICAL CHARACTERISTICS</b>									
DURABILITY (MATING CYCLES)		MATED 10,000 TIMES - Mechanically Operated : 200 cycle/h - Insertion Force, Extraction Force is the maximum speed: 12.5mm/min			① CONTACT RESISTANCE - DEFORMATION : WITHIN 10 mΩ OF BEFORE, AFTER MATED 10,000 TIMES. ② NO DAMAGE, CRACK AND LOOSENESS OF PARTS. ③ INSERTION FORCE - INITIAL OF TEST : 5 ~ 20 N ④ EXTRACTION FORCE - INITIAL OF TEST 8 ~ 20 N - AFTER OF TEST 6 ~ 20 N (WITH VIRGIN PLUG)			0	-
VIBRATION		FREQUENCY 10 TO 55Hz, HALF AMPLITUDE 0.75mm, - m/s <sup>2</sup> FOR 2hr IN 3 DIRECTIONS.			① NO ELECTRICAL DISCONTINUITY OF 1μs. ② NO DAMAGE, CRACK AND LOOSENESS OF PARTS.			0	-
SHOCK		490m/s <sup>2</sup> , DURATION OF PULSE 11ms AT 3 TIMES IN 3 DIRECTIONS.						0	-
WRENCHING STRENGTH		AFTER INSERTION OF PLUG, MEASURE THE FORCE UNTIL BE DAMAGED 4 DIRECTIONS. (UP, DOWN,LEFT, RIGHT), SPEED 12.5mm/Min, APPLY A FORCE AT THE POINT 15MM SOCKET FROM EDGE.[Fig1]			① 50N MIN			0	-
Remark				DRAWING	DESIGN	CHECK	APPROVAL	RELEASED	
<b>DRAWING FOR REFERENCE</b> This is subject to change without notice				C.E.LIM 15.09.24	C.E.LIM 15.09.24	S.M.LIM 15.09.24	T.S.KANG 15.09.24		
㉞) QT: Qualification Test    AT: Assurance Test    O: Applicable Test									
HIROSE KOREA CO.,LTD			SPECIFICATION SHEET			PART NO. CX70M-24P2			
CODE NO.(OLD) CL		DRAWING NO. ELC4-632081			CODE CL 6240-0003-4			1/2	

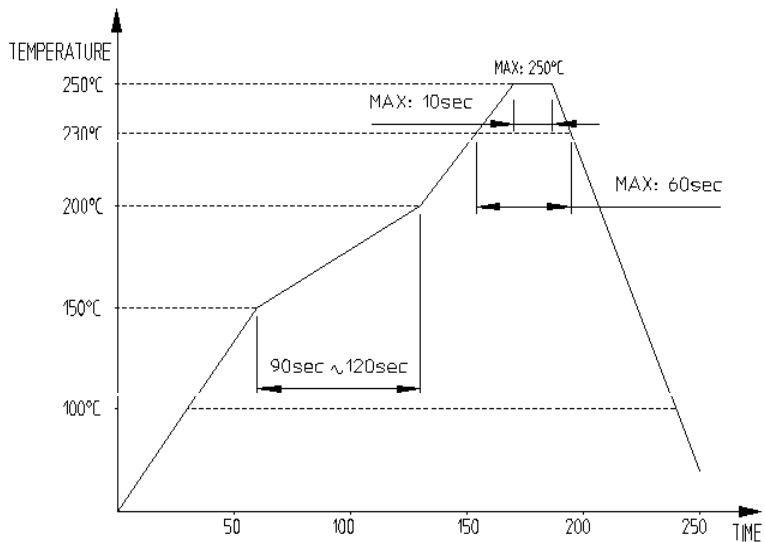
Jan. 1. 2022 Copyright 2022 HIROSE ELECTRIC CO., LTD. All Rights Reserved.  
 In case of consideration for using Automotive equipment / device which demand high reliability, kindly contact our sales window correspondents.

## SPECIFICATIONS

ITEM	TEST METHOD	REQUIREMENTS	QT	AT
<b>ENVIRONMENTAL CHARACTERISTICS</b>				
RAPID CHANGE OF TEMPERATURE	TEMPERATURE -55℃ ~ 85℃, 10CYCLES (MATING APPLICABLE CONNECTOR)	① CONTACT RESISTANCE : 70mΩ MAX ② INSULATION RESISTANCE : 100 MΩ MIN. ③ VOLTAGE PROOF. - NO FLASHOVER OR BREAKDOW ④ NO DAMAGE, CRACK AND LOOSENESS OF PARTS.	0	-
DAMP HEAT (STEADY STATE)	EXPOSED AT +85℃, 85%RH FOR 120 hr. (MATING APPLICABLE CONNECTOR)		0	-
DRY HEAT	EXPOSED AT +85±2℃ FOR 96±4 Hr. (MATING APPLICABLE CONNECTOR)		0	-
COLD	EXPOSED AT -40±2℃ FOR 96±4 Hr. (MATING APPLICABLE CONNECTOR)		0	-
CORROSION SALT MIST	EXPOSED AT 5% SALT WATER SPRAY FOR 48hr.	① CONTACT RESISTANCE : 70mΩ MAX ② NO EVIDENCE IF CORROSION WHICH AFFECTS TO OPERATION OF CONNECTOR.	0	-
SOLDERABILITY	SOLDERED AT SOLDERER TEMP. 255℃ FOR 5sec	COVERED WITH SOLDER THAT MINIMUM OF 95% OF THE SURFACE BEING IMMERSSED	0	-
REFLOW TEST (CO-PLANARITY)	REFLOW PROFILE[Fig2] PEAK 250℃ MAX. FOR 10 SEC. 2 TIMES.	① BEFORE REFLOW 0.08 MAX. ② AFTER REFLOW 0.08MAX. ③ NO DEFORMATION OF MOLD ④ NO SHAPE OF BLISTER AND POPCORN	0	-



**[Fig1]. WRENCHING STRENGTH**  
 (USING USB TYPE-C STANDARD REFERENCE TEST FIXTURE)



**[Fig2]. REFLOW TEMPERATURE**

Remark	DRAWING	DESIGN	CHECK	APPROVAL	RELEASED
<b style="color: red;">DRAWING FOR REFERENCE</b> This is subject to change without notice	C.E.LIM 15.09.24	C.E.LIM 15.09.24	S.M.LIM 15.09.24	T.S.KANG 15.09.24	<div style="border: 2px solid red; border-radius: 50%; padding: 5px; display: inline-block;">                     DEPT 16.01.07 ENG                 </div>

※) QT: Qualification Test    AT: Assurance Test    O: Applicable Test

<b>HIROSE KOREA CO.,LTD</b>	SPECIFICATION SHEET	PART NO. CX70M-24P2
CODE NO.(OLD) CL	DRAWING NO. ELC4-632081	CODE CL 6240-0003-4