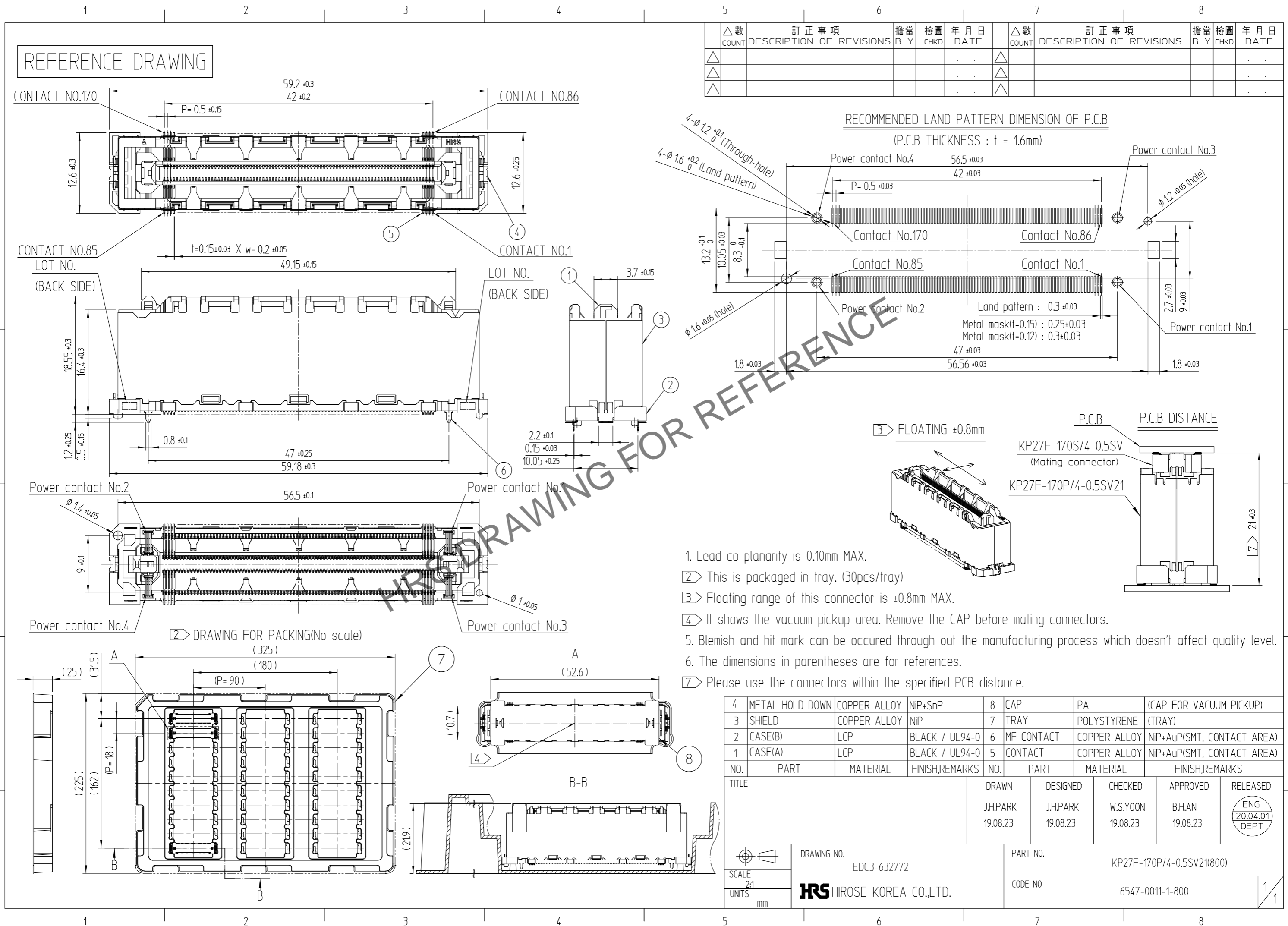


Jan.1.2025 Copyright 2025 HIROSE ELECTRIC CO., LTD. All Rights Reserved.
In case of consideration for using Automotive equipment / device which demand high reliability, kindly contact our sales window correspondents.



△數 COUNT	訂正事項 DESCRIPTION OF REVISIONS	擔當 B Y	檢圖 CHKD	年月日 DATE	△數 COUNT	訂正事項 DESCRIPTION OF REVISIONS	擔當 B Y	檢圖 CHKD	年月日 DATE
△					△				
△					△				
△					△				

NO.	PART	MATERIAL	FINISH,REMARKS	NO.	PART	MATERIAL	FINISH,REMARKS
4	METAL HOLD DOWN	COPPER ALLOY	NiP+SnP	8	CAP	PA	(CAP FOR VACUUM PICKUP)
3	SHIELD	COPPER ALLOY	NIP	7	TRAY	POLYSTYRENE	(TRAY)
2	CASE(B)	LCP	BLACK / UL94-0	6	MF CONTACT	COPPER ALLOY	NiP+AuP(SMT, CONTACT AREA)
1	CASE(A)	LCP	BLACK / UL94-0	5	CONTACT	COPPER ALLOY	NiP+AuP(SMT, CONTACT AREA)

TITLE	DRAWN	DESIGNED	CHECKED	APPROVED	RELEASED
	J.H.PARK 19.08.23	J.H.PARK 19.08.23	W.S.YOON 19.08.23	B.H.AN 19.08.23	ENG 20.04.01 DEPT

SCALE 2:1 UNITS mm	DRAWING NO. EDC3-632772 HIROSE HIROSE KOREA CO.,LTD.	PART NO. KP27F-170P/4-0.5SV21(800) CODE NO 6547-0011-1-800	1/1
-----------------------------	---	---	-----