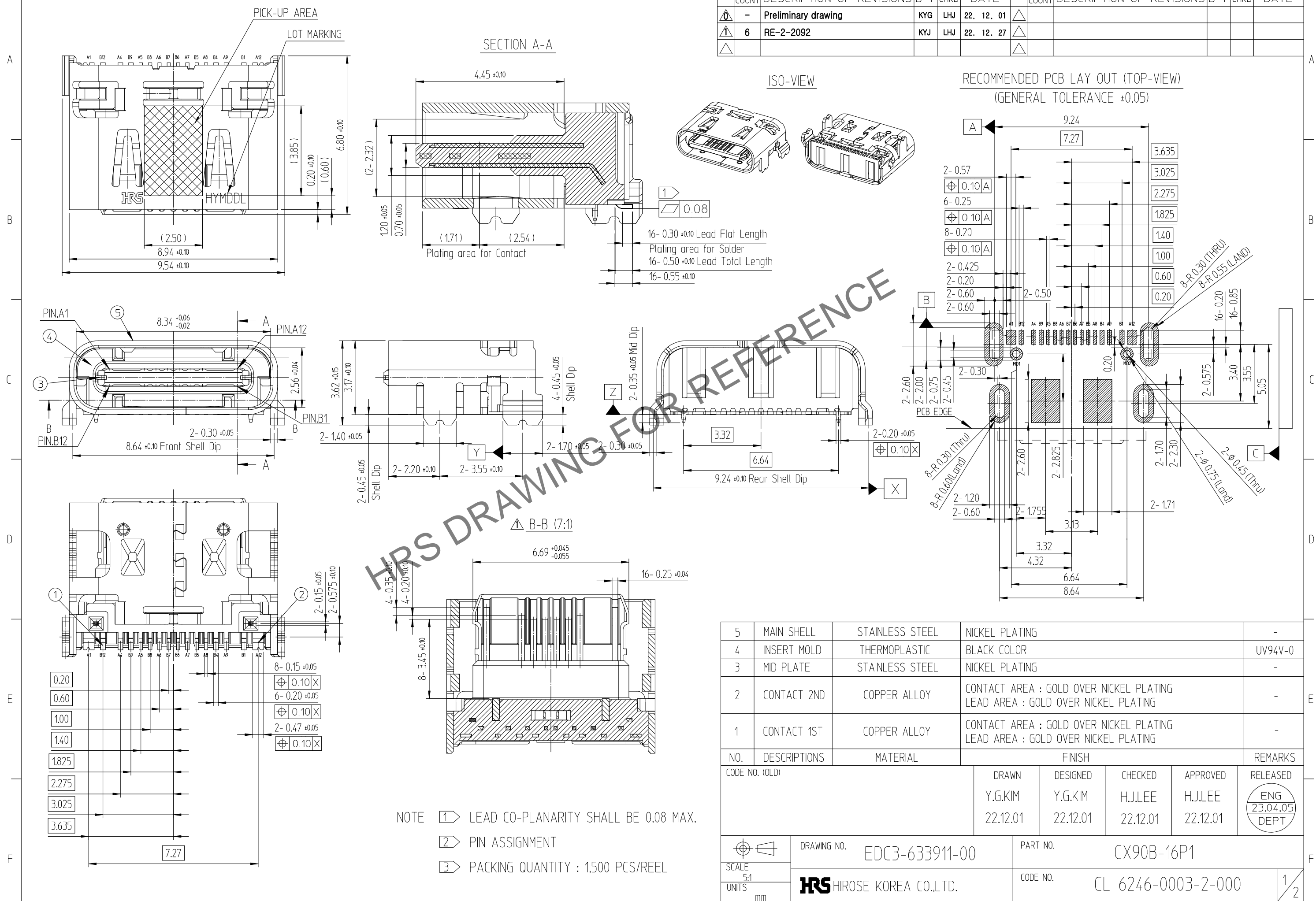


Mar.1.2026 Copyright 2026 HIROSE ELECTRIC CO., LTD. All Rights Reserved.
In case of consideration for using Automotive equipment / device which demand high reliability, kindly contact our sales window correspondents.

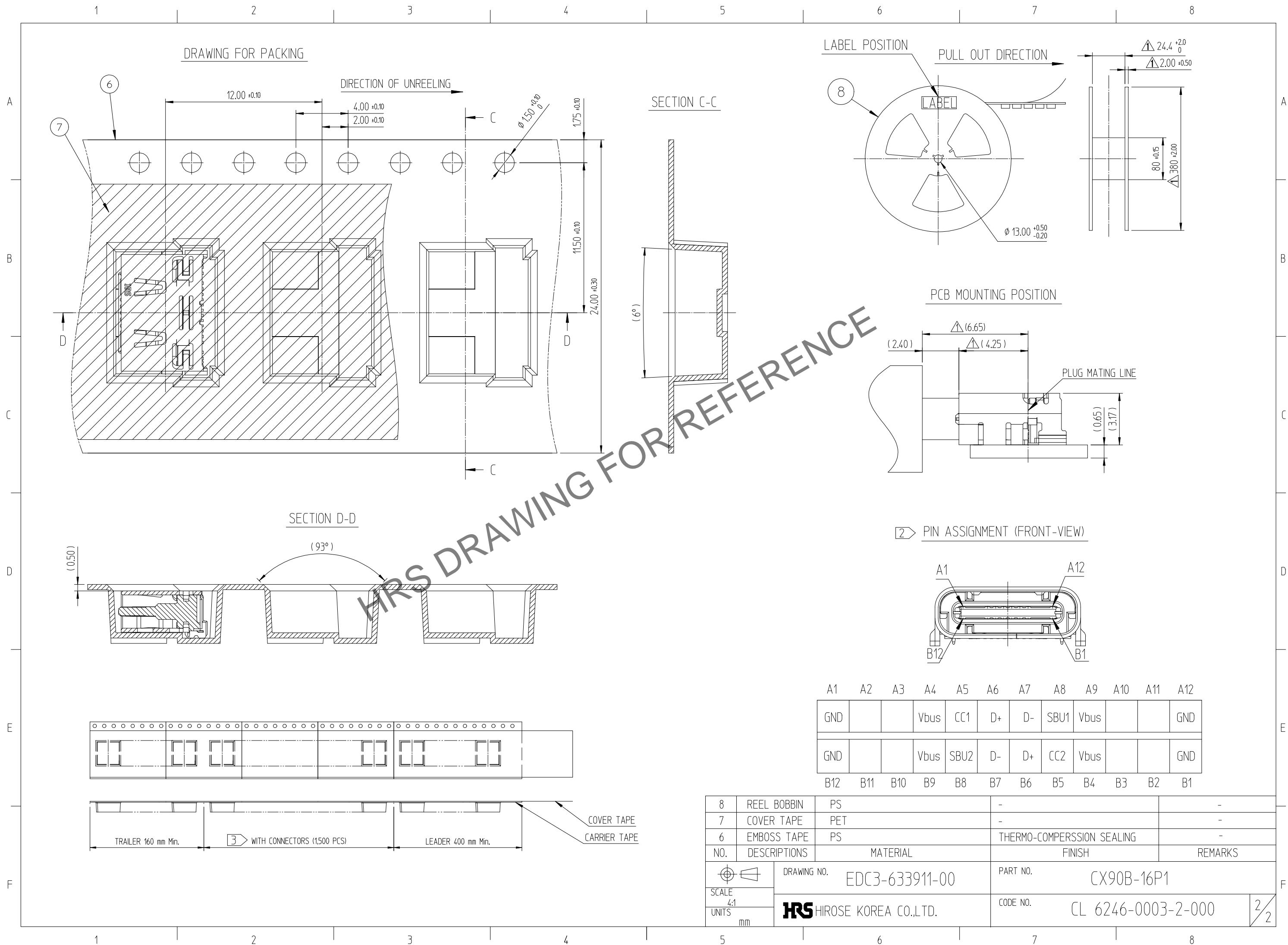
△數 COUNT	訂正事項 DESCRIPTION OF REVISIONS	擔當 B Y	檢圖 CHKD	年月日 DATE	△數 COUNT	訂正事項 DESCRIPTION OF REVISIONS	擔當 B Y	檢圖 CHKD	年月日 DATE
0	- Preliminary drawing	KYG	LHJ	22. 12. 01	△				
1	6 RE-2-2092	KYJ	LHJ	22. 12. 27	△				
△					△				



NO.	DESCRIPTIONS	MATERIAL	FINISH	REMARKS
5	MAIN SHELL	STAINLESS STEEL	NICKEL PLATING	-
4	INSERT MOLD	THERMOPLASTIC	BLACK COLOR	UV94V-0
3	MID PLATE	STAINLESS STEEL	NICKEL PLATING	-
2	CONTACT 2ND	COPPER ALLOY	CONTACT AREA : GOLD OVER NICKEL PLATING LEAD AREA : GOLD OVER NICKEL PLATING	-
1	CONTACT 1ST	COPPER ALLOY	CONTACT AREA : GOLD OVER NICKEL PLATING LEAD AREA : GOLD OVER NICKEL PLATING	-

CODE NO. (OLD)				DRAWN	DESIGNED	CHECKED	APPROVED	RELEASED
				Y.G.KIM	Y.G.KIM	H.J.LEE	H.J.LEE	ENG 23.04.05 DEPT
DRAWING NO. EDC3-633911-00				PART NO. CX90B-16P1				
SCALE 5:1 UNITS mm				HRS HIROSE KOREA CO.,LTD.		CODE NO. CL 6246-0003-2-000		1/2

Mar.1.2026 Copyright 2026 HIROSE ELECTRIC CO., LTD. All Rights Reserved.
 In case of consideration for using Automotive equipment / device which demand high reliability, kindly contact our sales window correspondents.



HRS DRAWING FOR REFERENCE

A1	A2	A3	A4	A5	A6	A7	A8	A9	A10	A11	A12
GND			Vbus	CC1	D+	D-	SBU1	Vbus			GND
GND			Vbus	SBU2	D-	D+	CC2	Vbus			GND
B12	B11	B10	B9	B8	B7	B6	B5	B4	B3	B2	B1

8	REEL BOBBIN	PS	-	-
7	COVER TAPE	PET	-	-
6	EMBOSS TAPE	PS	THERMO-COMPRESSSION SEALING	
NO.	DESCRIPTIONS	MATERIAL	FINISH	REMARKS
DRAWING NO.		EDC3-633911-00		PART NO.
SCALE		4:1		CODE NO.
UNITS		mm		CL 6246-0003-2-000