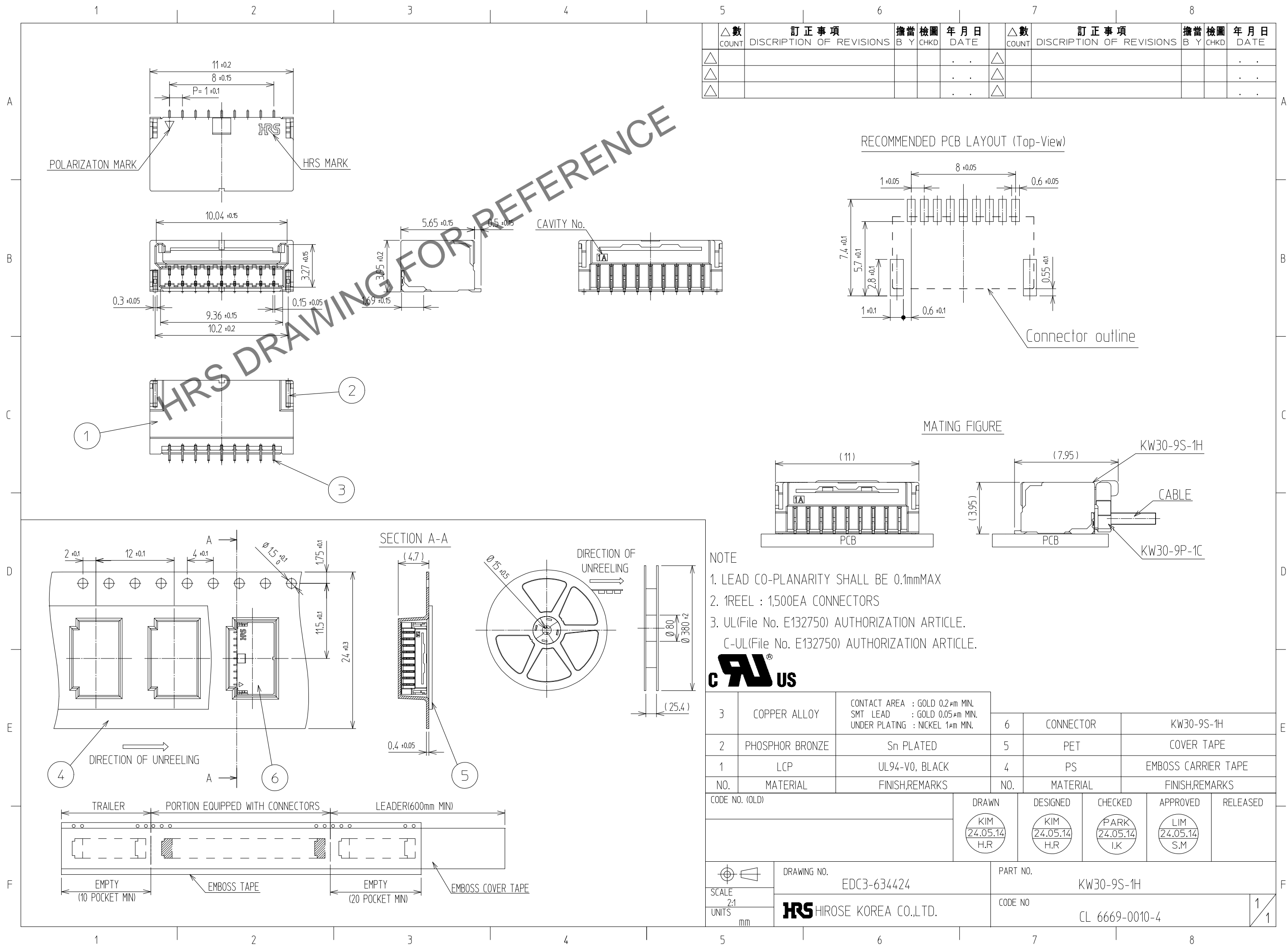


Dec.1.2024 Copyright 2024 HIROSE ELECTRIC CO., LTD. All Rights Reserved.
In case of consideration for using Automotive equipment / device which demand high reliability, kindly contact our sales window



△數 COUNT	訂正事項 DISCRPTION OF REVISIONS	擔當 B	檢圖 CHKD	年月日 DATE	△數 COUNT	訂正事項 DISCRPTION OF REVISIONS	擔當 B	檢圖 CHKD	年月日 DATE
△					△				
△					△				
△					△				

NO.	MATERIAL	FINISH,REMARKS	NO.	MATERIAL	FINISH,REMARKS
3	COPPER ALLOY	CONTACT AREA : GOLD 0.2μm MIN. SMT LEAD : GOLD 0.05μm MIN. UNDER PLATING : NICKEL 1μm MIN.	6	CONNECTOR	KW30-9S-1H
2	PHOSPHOR BRONZE	Sn PLATED	5	PET	COVER TAPE
1	LCP	UL94-V0, BLACK	4	PS	EMBOSS CARRIER TAPE

CODE NO. (OLD)	DRAWN KIM 24.05.14 H.R	DESIGNED KIM 24.05.14 H.R	CHECKED PARK 24.05.14 I.K	APPROVED LIM 24.05.14 S.M	RELEASED
SCALE 2:1 UNITS mm	DRAWING NO. EDC3-634424		PART NO. KW30-9S-1H		
	HRS HIROSE KOREA CO.,LTD.		CODE NO. CL 6669-0010-4		

1/1