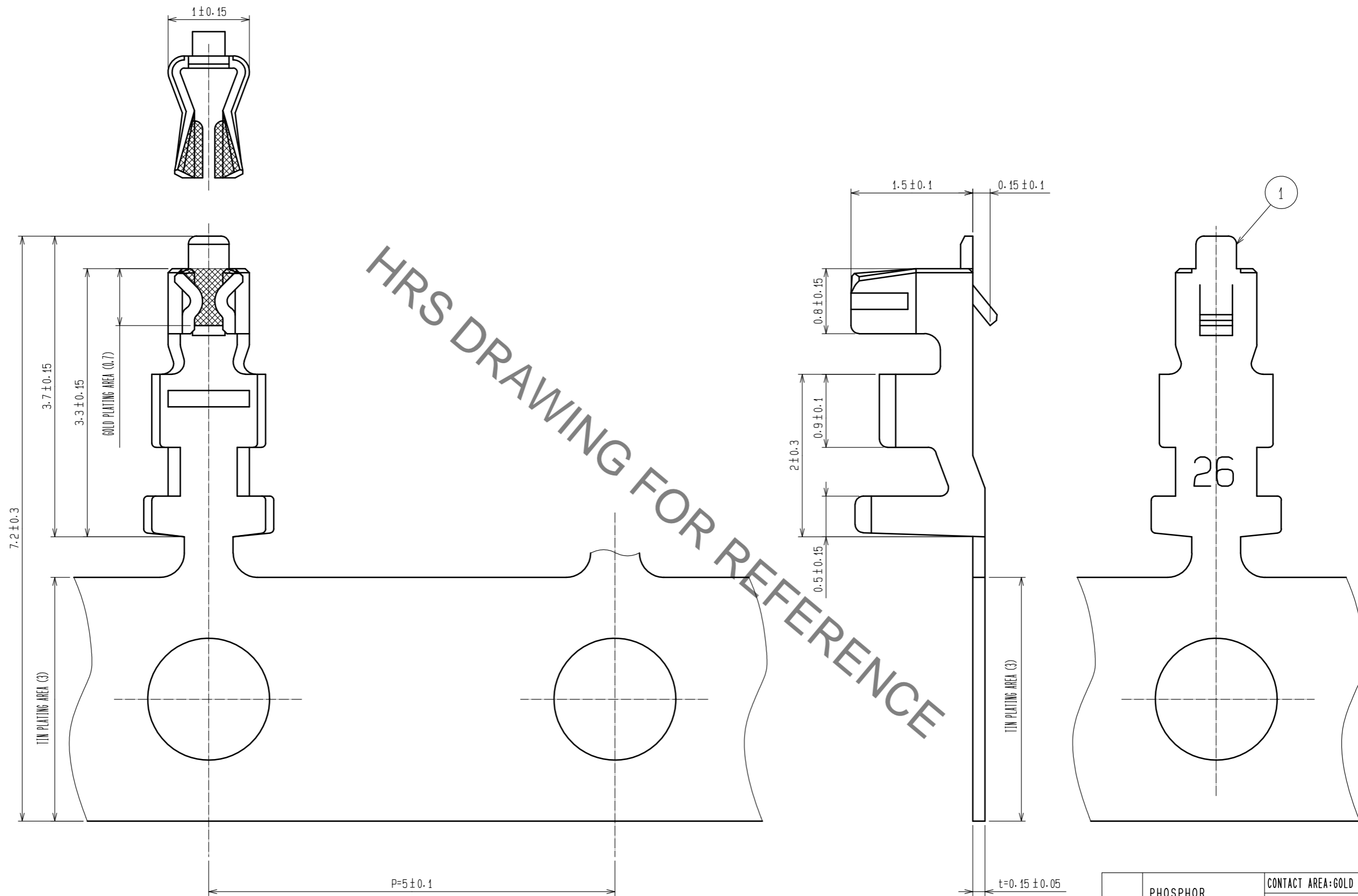


May.1.2022 Copyright 2022 HIROSE ELECTRIC CO., LTD. All Rights Reserved.
 In case of consideration for using Automotive equipment / device which demand high reliability, kindly contact our sales window correspondents.



HRS DRAWING FOR REFERENCE

NOTES 1: APPLICABLE WIRE : 26 - 30 AWG
 2: 1 REEL 10000 CONTACTS
 ⚠ OUTER DIAMETER : $\phi 0.56 - \phi 1.0$ mm

| | | | | | |
|---------------------------|-----------------|-------------------------|------------|----------------------|--|
| NO. | MATERIAL | FINISH . REMARKS | NO. | MATERIAL | FINISH . REMARKS |
| 1 | PHOSPHOR BRONZE | | | | CONTACT AREA:GOLD PLATING 0.2 μ m min CARRIER AREA:TIN PLATING 1 μ m min OTHERS:NICKEL PLATING 0.5 μ m min |
| UNITS mm | | SCALE 20: 1 | COUNT 1 | DESIGNED HT. SATO | CHECKED SZ. ONO |
| HIROSE ELECTRIC CO., LTD. | | APPROVED : TS. SAKATA | 20090915 | DRAWING NO. | EDC-071220-04-06 |
| | | CHECKED : TS. FUKUSHIMA | 20090914 | PART NO. | DF13-2630SCFA(04) |
| | | DESIGNED : KT. ISHII | 20090911 | CODE NO. | CL536-0298-5-04 |
| | | DRAWN : YK. NAKATSU | 20090909 | | 1/1 |