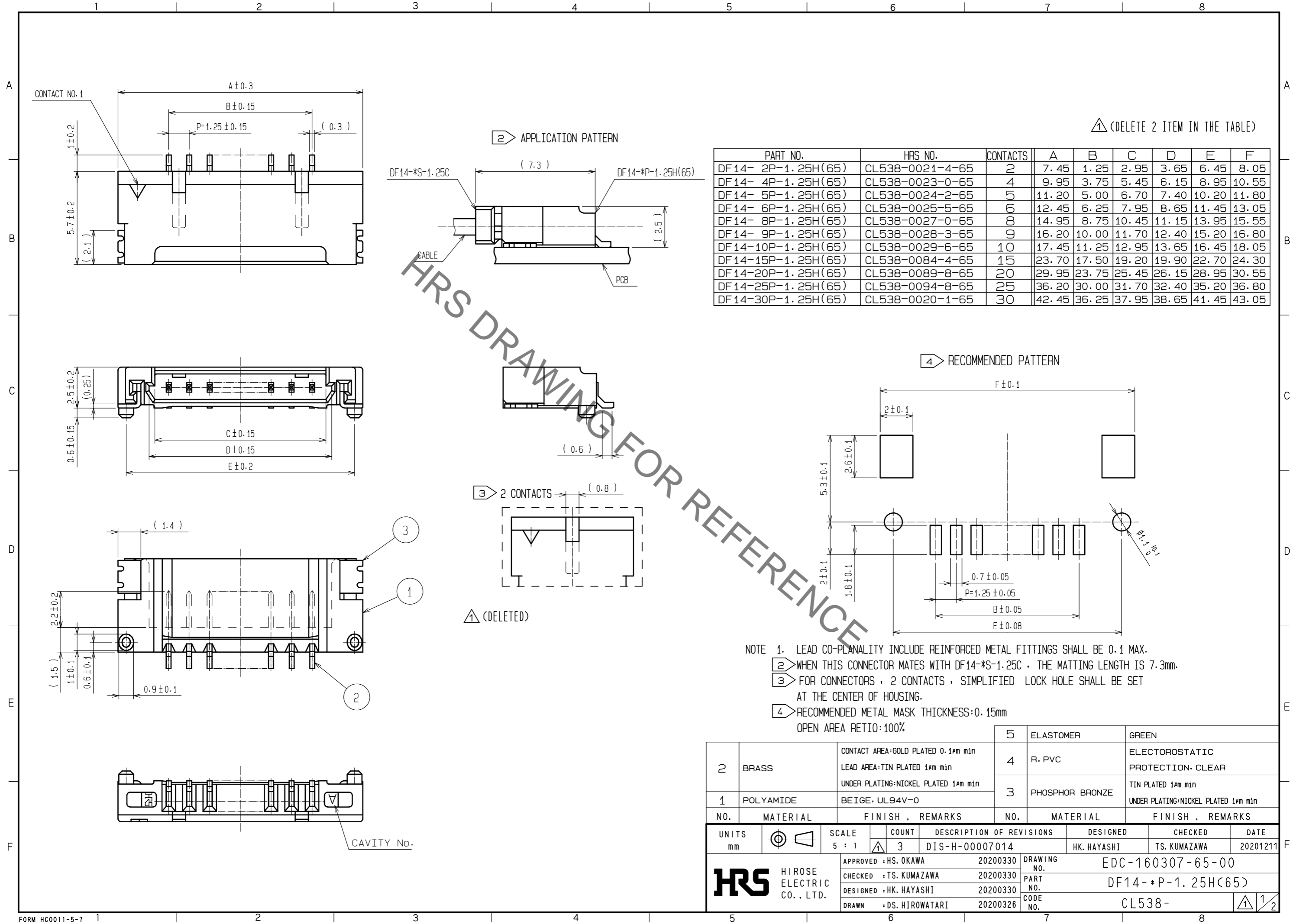


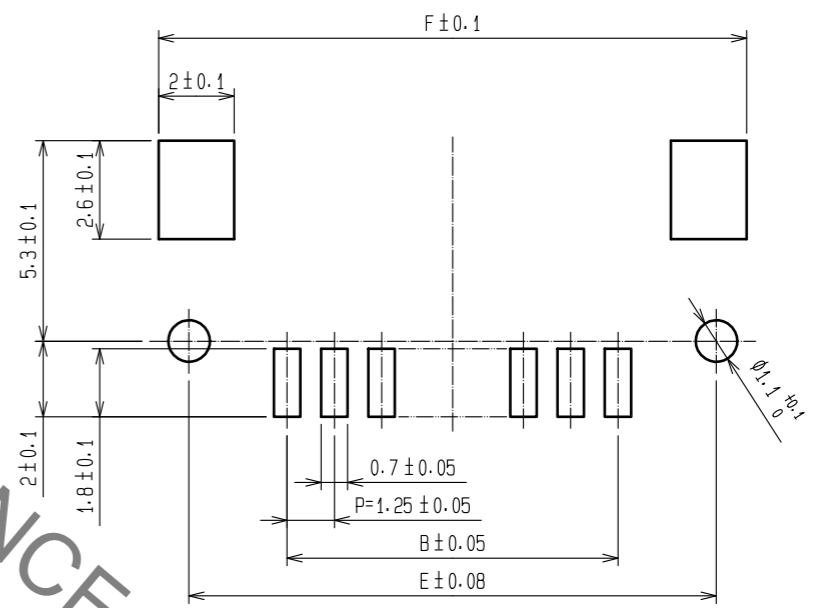
Apr.1.2022 Copyright 2022 HIROSE ELECTRIC CO., LTD. All Rights Reserved.  
In case of consideration for using Automotive equipment / device which demand high reliability, kindly contact our sales window correspondents.



△ (DELETE 2 ITEM IN THE TABLE)

PART NO.	HRS NO.	CONTACTS	A	B	C	D	E	F
DF14- 2P-1.25H(65)	CL538-0021-4-65	2	7.45	1.25	2.95	3.65	6.45	8.05
DF14- 4P-1.25H(65)	CL538-0023-0-65	4	9.95	3.75	5.45	6.15	8.95	10.55
DF14- 5P-1.25H(65)	CL538-0024-2-65	5	11.20	5.00	6.70	7.40	10.20	11.80
DF14- 6P-1.25H(65)	CL538-0025-5-65	6	12.45	6.25	7.95	8.65	11.45	13.05
DF14- 8P-1.25H(65)	CL538-0027-0-65	8	14.95	8.75	10.45	11.15	13.95	15.55
DF14- 9P-1.25H(65)	CL538-0028-3-65	9	16.20	10.00	11.70	12.40	15.20	16.80
DF14-10P-1.25H(65)	CL538-0029-6-65	10	17.45	11.25	12.95	13.65	16.45	18.05
DF14-15P-1.25H(65)	CL538-0084-4-65	15	23.70	17.50	19.20	19.90	22.70	24.30
DF14-20P-1.25H(65)	CL538-0089-8-65	20	29.95	23.75	25.45	26.15	28.95	30.55
DF14-25P-1.25H(65)	CL538-0094-8-65	25	36.20	30.00	31.70	32.40	35.20	36.80
DF14-30P-1.25H(65)	CL538-0020-1-65	30	42.45	36.25	37.95	38.65	41.45	43.05

▷ RECOMMENDED PATTERN



- NOTE 1. LEAD CO-PLANALITY INCLUDE REINFORCED METAL FITTINGS SHALL BE 0.1 MAX.  
 2. WHEN THIS CONNECTOR MATES WITH DF14-\*S-1.25C, THE MATTING LENGTH IS 7.3mm.  
 3. FOR CONNECTORS, 2 CONTACTS, SIMPLIFIED LOCK HOLE SHALL BE SET AT THE CENTER OF HOUSING.  
 4. RECOMMENDED METAL MASK THICKNESS:0.15mm  
 OPEN AREA RETIO:100%

NO.	MATERIAL	FINISH . REMARKS	NO.	MATERIAL	FINISH . REMARKS
2	BRASS	CONTACT AREA:GOLD PLATED 0.1µm min LEAD AREA:TIN PLATED 1µm min UNDER PLATING:NICKEL PLATED 1µm min	5	ELASTOMER	GREEN
1	POLYAMIDE	BEIGE, UL94V-0	4	R. PVC	ELECTROSTATIC PROTECTION, CLEAR
			3	PHOSPHOR BRONZE	TIN PLATED 1µm min UNDER PLATING:NICKEL PLATED 1µm min

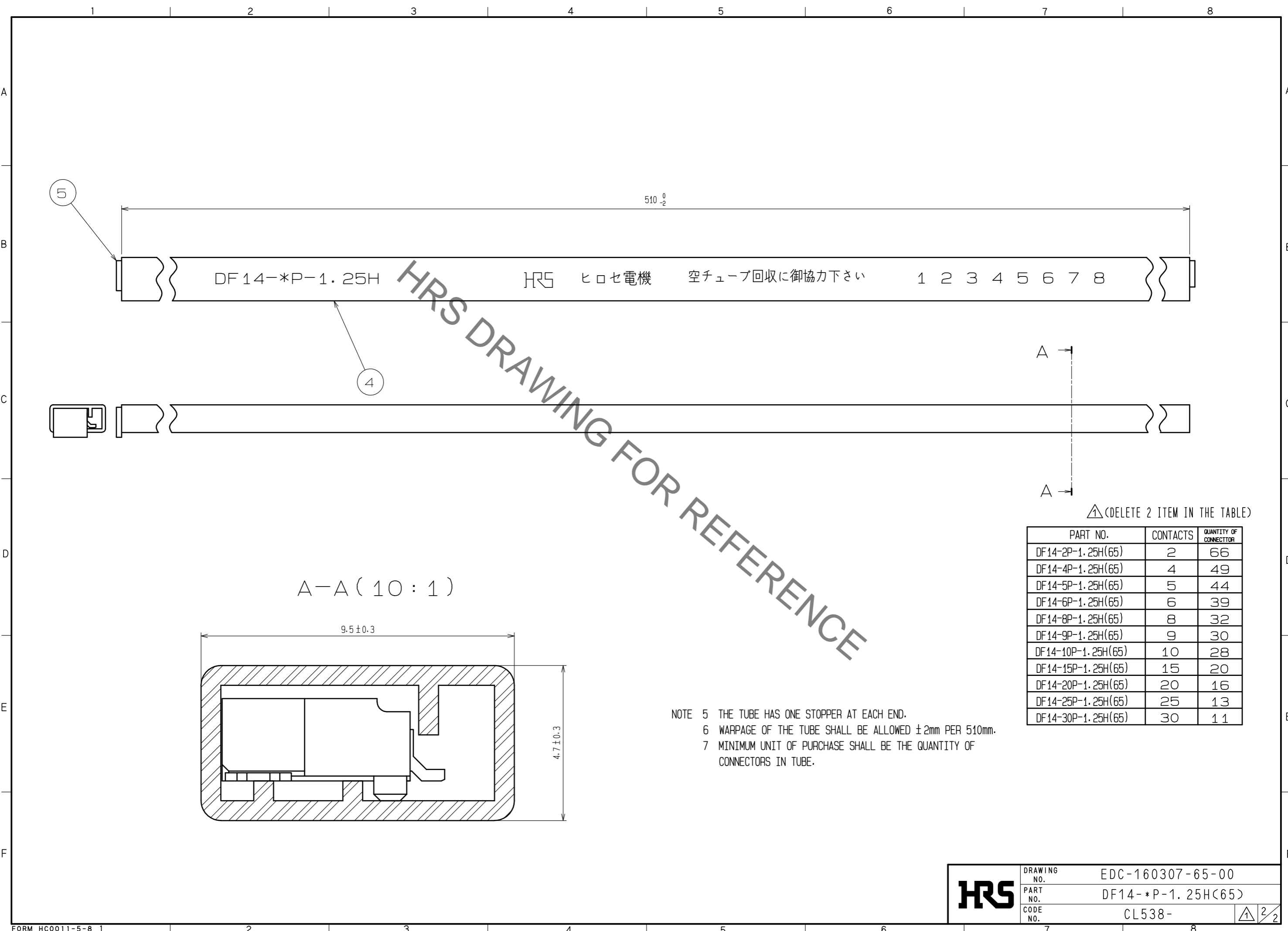
  

UNITS	SCALE	COUNT	DESCRIPTION OF REVISIONS	DESIGNED	CHECKED	DATE
mm	5 : 1	3	DIS-H-00007014	HK. HAYASHI	TS. KUMAZAWA	20201211

APPROVED	CHECKED	DESIGNED	DRAWN	DRAWING NO.	PART NO.	CODE NO.
HS. OKAWA	TS. KUMAZAWA	HK. HAYASHI	DS. HIROWATARI	20200330	20200330	20200330
				EDC-160307-65-00	DF14-*P-1.25H(65)	CL538-

Apr.1.2022 Copyright 2022 HIROSE ELECTRIC CO., LTD. All Rights Reserved.  
 In case of consideration for using Automotive equipment / device which demand high reliability, kindly contact our sales window correspondents.



HRS DRAWING FOR REFERENCE

△ (DELETE 2 ITEM IN THE TABLE)

PART NO.	CONTACTS	QUANTITY OF CONNECTOR
DF14-2P-1.25H(65)	2	66
DF14-4P-1.25H(65)	4	49
DF14-5P-1.25H(65)	5	44
DF14-6P-1.25H(65)	6	39
DF14-8P-1.25H(65)	8	32
DF14-9P-1.25H(65)	9	30
DF14-10P-1.25H(65)	10	28
DF14-15P-1.25H(65)	15	20
DF14-20P-1.25H(65)	20	16
DF14-25P-1.25H(65)	25	13
DF14-30P-1.25H(65)	30	11

<b>HRS</b>	DRAWING NO.	EDC-160307-65-00	
	PART NO.	DF14-*P-1.25H(65)	
	CODE NO.	CL538-	△ 2/2