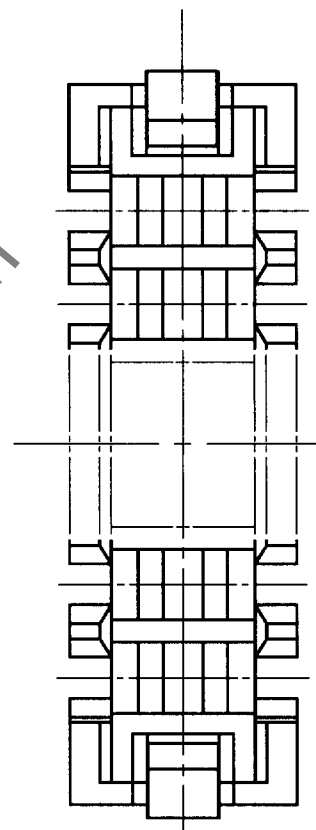
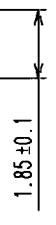
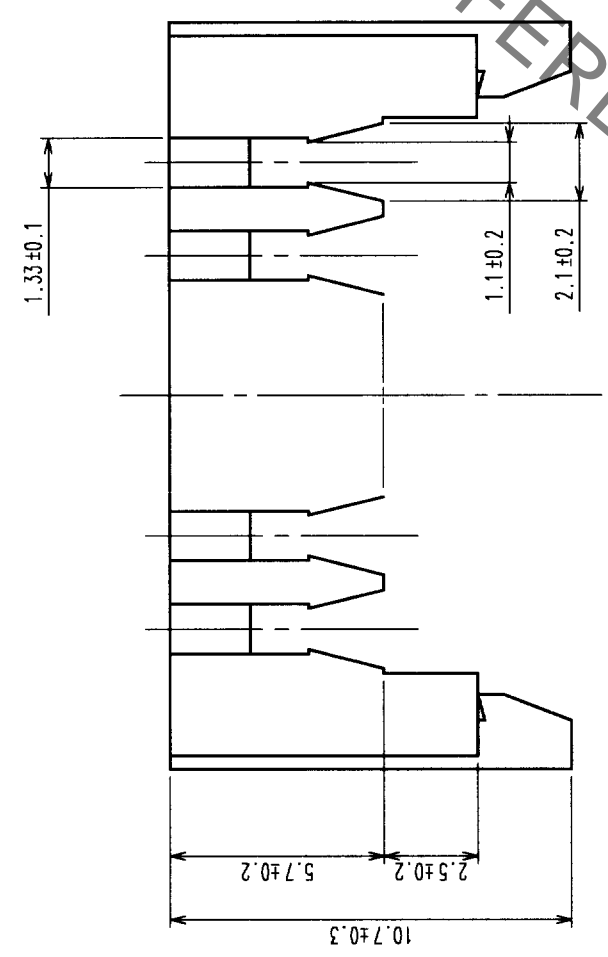
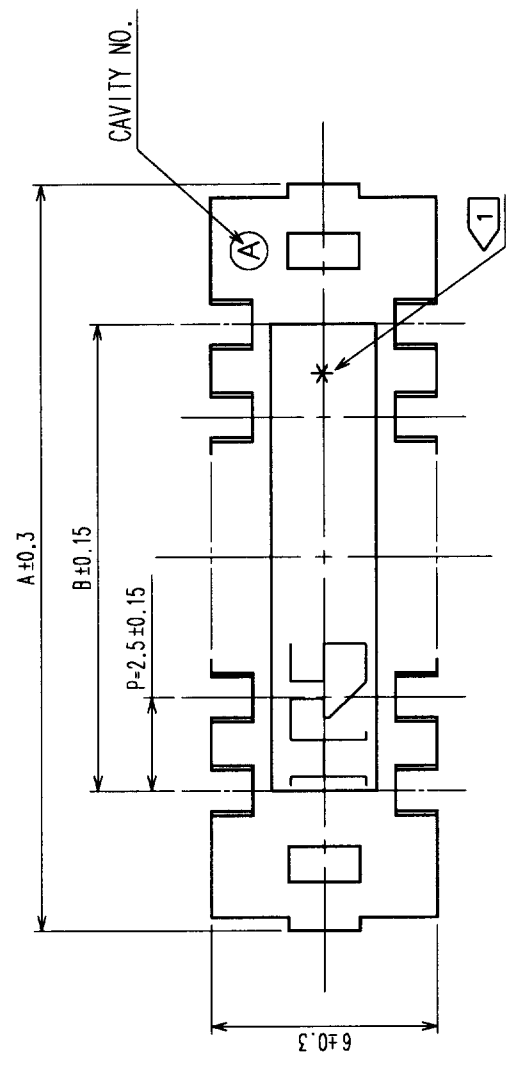


COUNT	DESCRIPTION OF REVISIONS	BY	CHKD	DATE	COUNT	DESCRIPTION OF REVISIONS	BY	CHKD	DATE
△					△				
△					△				
△					△				



CODE No.	PART No.	NUMBER OF CONTACT	A	B
541-0077-1	DF1-2A1.33	2	10	2.5
541-0078-4	DF1-3A1.33	3	12.5	5
541-0079-7	DF1-4A1.33	4	15	7.5
541-0080-6	DF1-5A1.33	5	17.5	10
541-0081-9	DF1-6A1.33	6	20	12.5
541-0082-1	DF1-7A1.33	7	22.5	15
541-0083-4	DF1-8A1.33	8	25	17.5
541-0084-7	DF1-9A1.33	9	27.5	20
541-0085-0	DF1-10A1.33	10	30	22.5
541-0086-2	DF1-11A1.33	11	32.5	25
541-0087-5	DF1-12A1.33	12	35	27.5
541-0088-8	DF1-13A1.33	13	37.5	30
541-0089-0	DF1-14A1.33	14	40	32.5
541-0090-0	DF1-15A1.33	15	42.5	35
541-0091-2	DF1-16A1.33	16	45	37.5
541-0095-3	DF1-20A1.33	20	55	47.5

NOTES 1 NO. OF CONTACTS SHALL BE INDICATED EXCLUDING 2 AND 3 POSITIONS.
 2 APPLICABLE CABLE: UL1007 AWG24

HRS DRAWING FOR REFERENCE

TO	

NO.	MATERIAL	FINISH, REMARKS	NO.	MATERIAL	FINISH, REMARKS
1	POLYAMIDE		1	PALE BROWN, UL94V-0	

CODE NO. (OLD)	DRAWN	DESIGNED	CHECKED	APPROVED	RELEASED
	Y. NAGASHIMA	J. Inoue	T. Higashi	K. Katayama	

'00.11.10 '00.11.10 '00.11.13 '00.11.14

DRAWING NO.	PART NO.
EDC3-162341	DF1-*A1.33
SCALE	CODE NO.
5 : 1	CL541
UNITS	
MM	