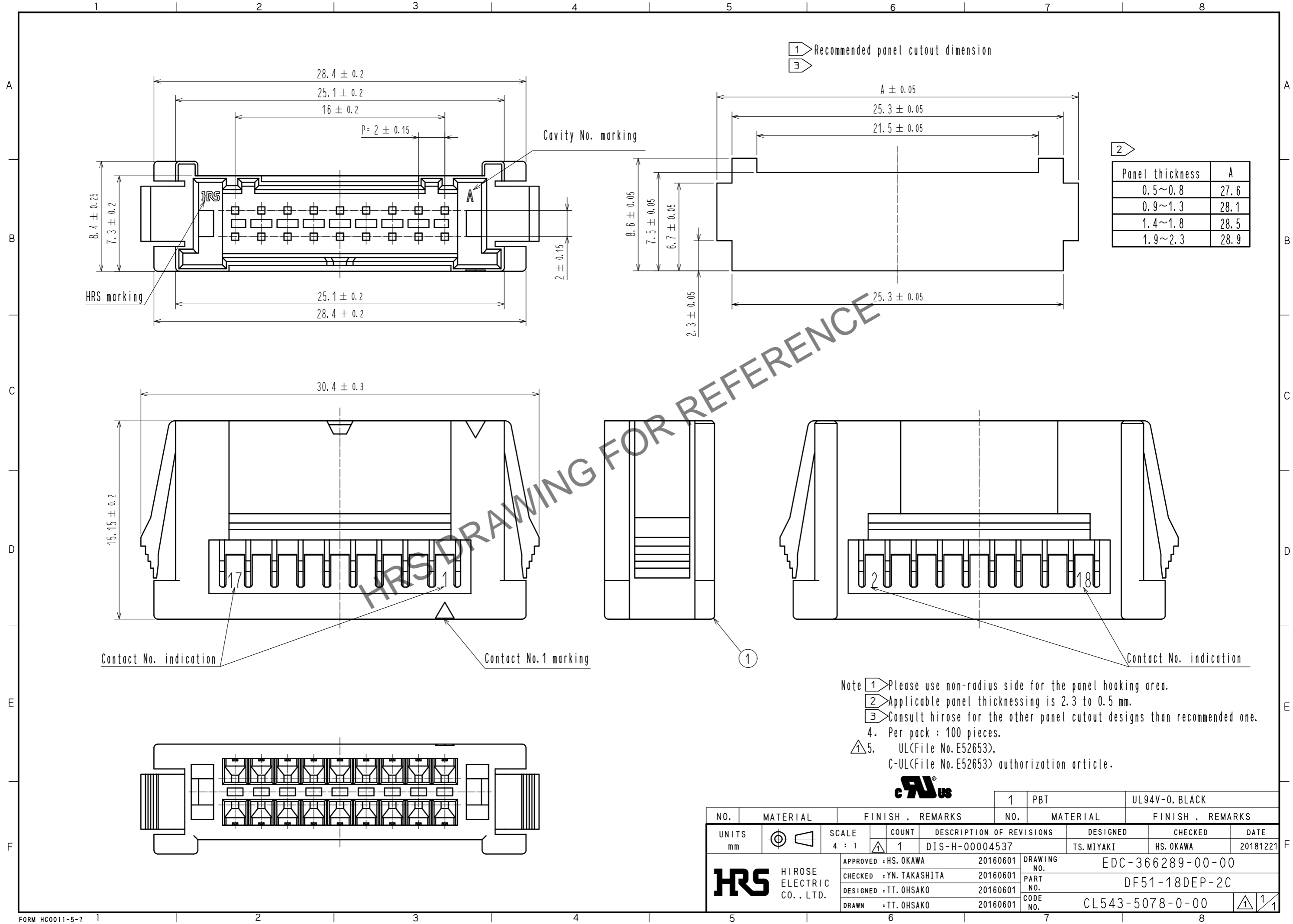


Jan.1.2025 Copyright 2025 HIROSE ELECTRIC CO., LTD. All Rights Reserved.
In case of consideration for using Automotive equipment / device which demand high reliability, kindly contact our sales window correspondents.



Panel thickness	A
0.5~0.8	27.6
0.9~1.3	28.1
1.4~1.8	28.5
1.9~2.3	28.9

- Note
- ① Please use non-radius side for the panel hooking area.
 - ② Applicable panel thicknessing is 2.3 to 0.5 mm.
 - ③ Consult Hirose for the other panel cutout designs than recommended one.
 - 4. Per pack : 100 pieces.
 - △ 5. UL(File No.E52653),
C-UL(File No.E52653) authorization article.



NO.	MATERIAL	FINISH . REMARKS	NO.	MATERIAL	FINISH . REMARKS		
			1	PBT	UL94V-0. BLACK		
UNITS mm		SCALE 4 : 1	COUNT △ 1	DESCRIPTION OF REVISIONS DIS-H-00004537	DESIGNED TS.MIYAKI	CHECKED HS.OKAWA	DATE 20181221
HRS HIROSE ELECTRIC CO., LTD.		APPROVED : HS. OKAWA	20160601	DRAWING NO. EDC-366289-00-00			
		CHECKED : YN. TAKASHITA	20160601	PART NO. DF51-18DEP-2C			
		DESIGNED : TT. OHSAKO	20160601	CODE NO. CL543-5078-0-00			
		DRAWN : TT. OHSAKO	20160601			△ 1/1	