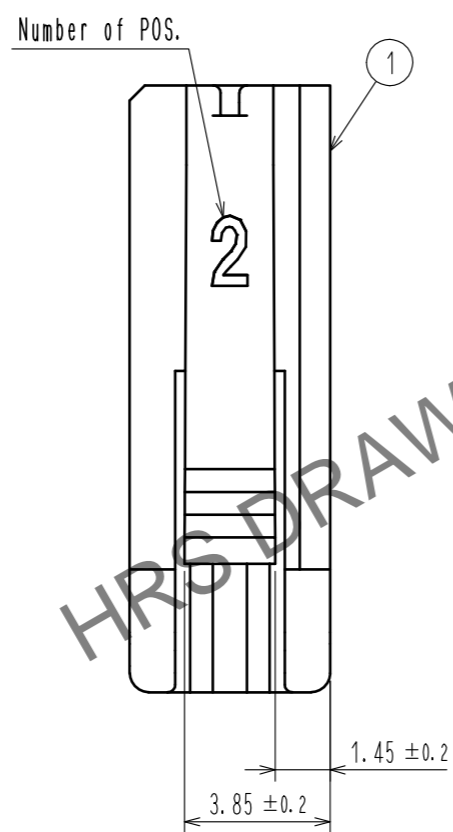
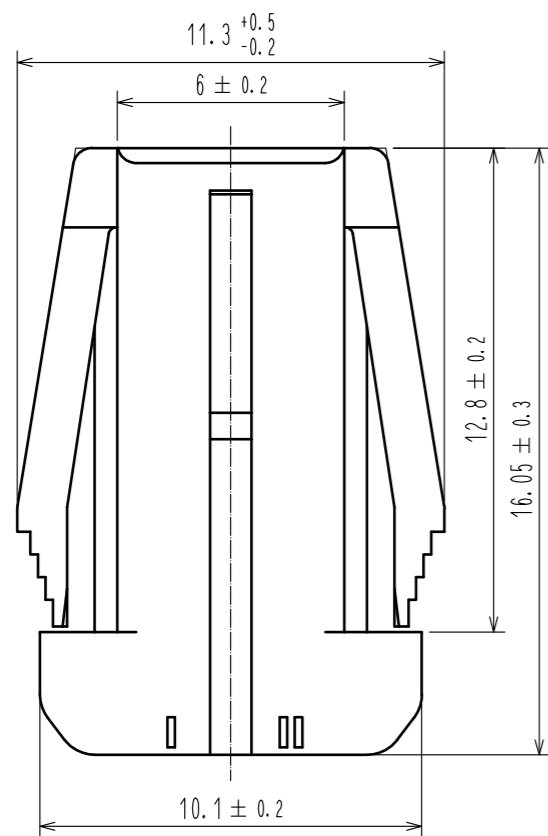
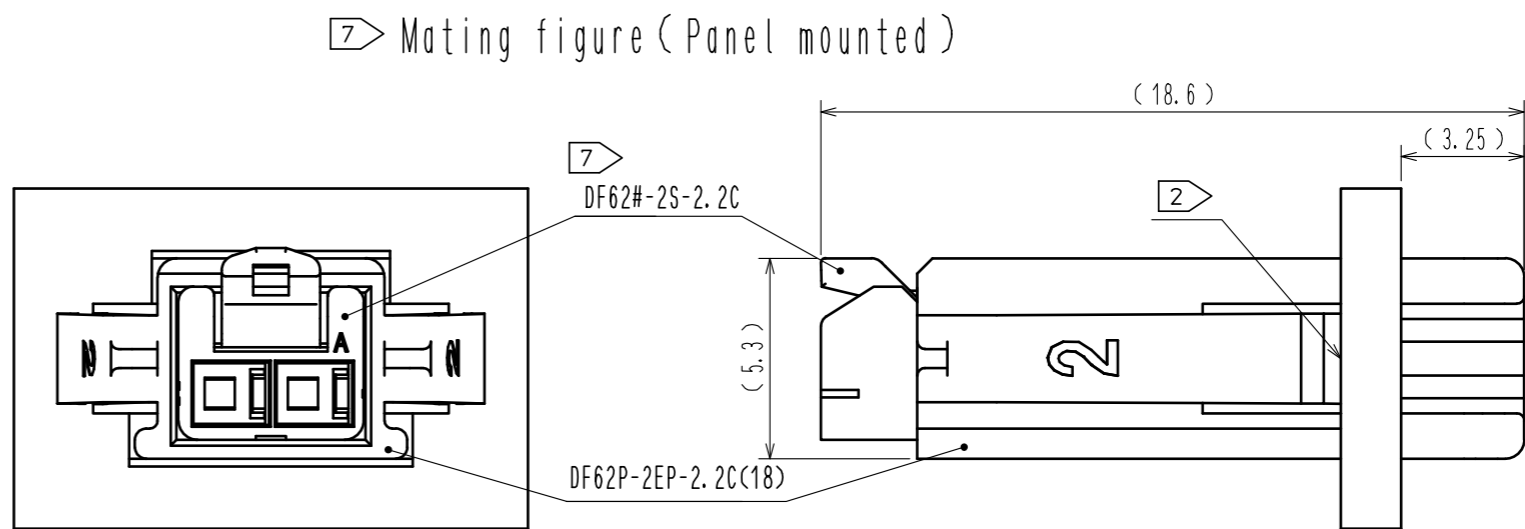
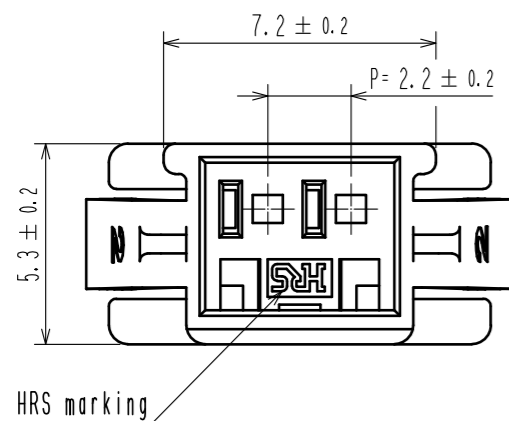


Oct.1.2024 Copyright 2024 HIROSE ELECTRIC CO., LTD. All Rights Reserved.  
In case of consideration for using Automotive equipment / device which demand high reliability, kindly contact our sales window correspondents.



Recommended panel cutout dimension

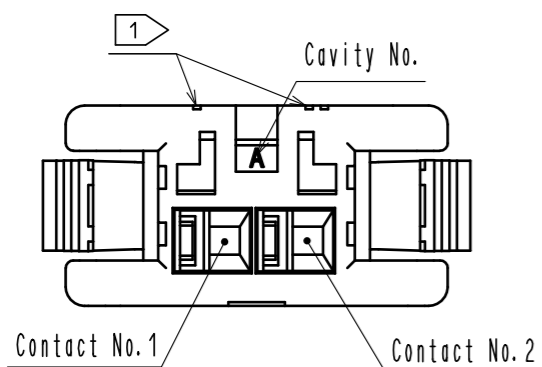
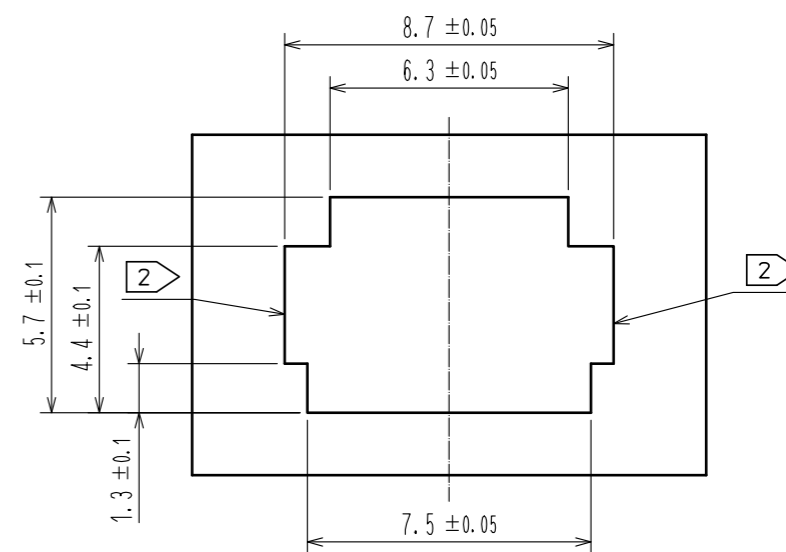
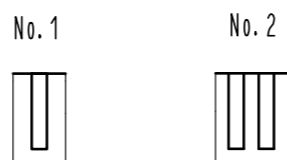


Figure-1 contact No. marking (10:1)



- NOTE.
- 1 Markings at the indicated position are contact No. marking. And shapes are shown in figure-1.
  - 2 Please use the non-radius side for the panel hooking area.
  - 3 Applicable panel thickening is 2.3 to 0.5mm.
  - 4 Consult HIROSE for the other panel cutout designs than the recommended one.
  5. Per pack : 100 pieces.
  6. The dimension in parenthesis are for reference.
  - 7 This figure shows the condition with DF62B-2S-2.2C.

NO.	MATERIAL	FINISH . REMARKS	1	PBT	UL94V-0(Red)
UNITS	mm	SCALE	5 : 1		
		COUNT			
		DESCRIPTION OF REVISIONS	DESIGNED	CHECKED	DATE
<b>HRS</b>	HIROSE ELECTRIC CO., LTD.	APPROVED : HS. OKAWA	17. 03. 01	DRAWING NO.	EDC-349135-18-00
		CHECED : HS. OKAWA	17. 03. 01	PART NO.	DF62P-2EP-2. 2C(18)
		DESIGNED : YK. YAMAGUCHI	17. 03. 01	CODE NO.	CL544-0543-1-18
		DRAWN : YK. YAMAGUCHI	17. 03. 01		