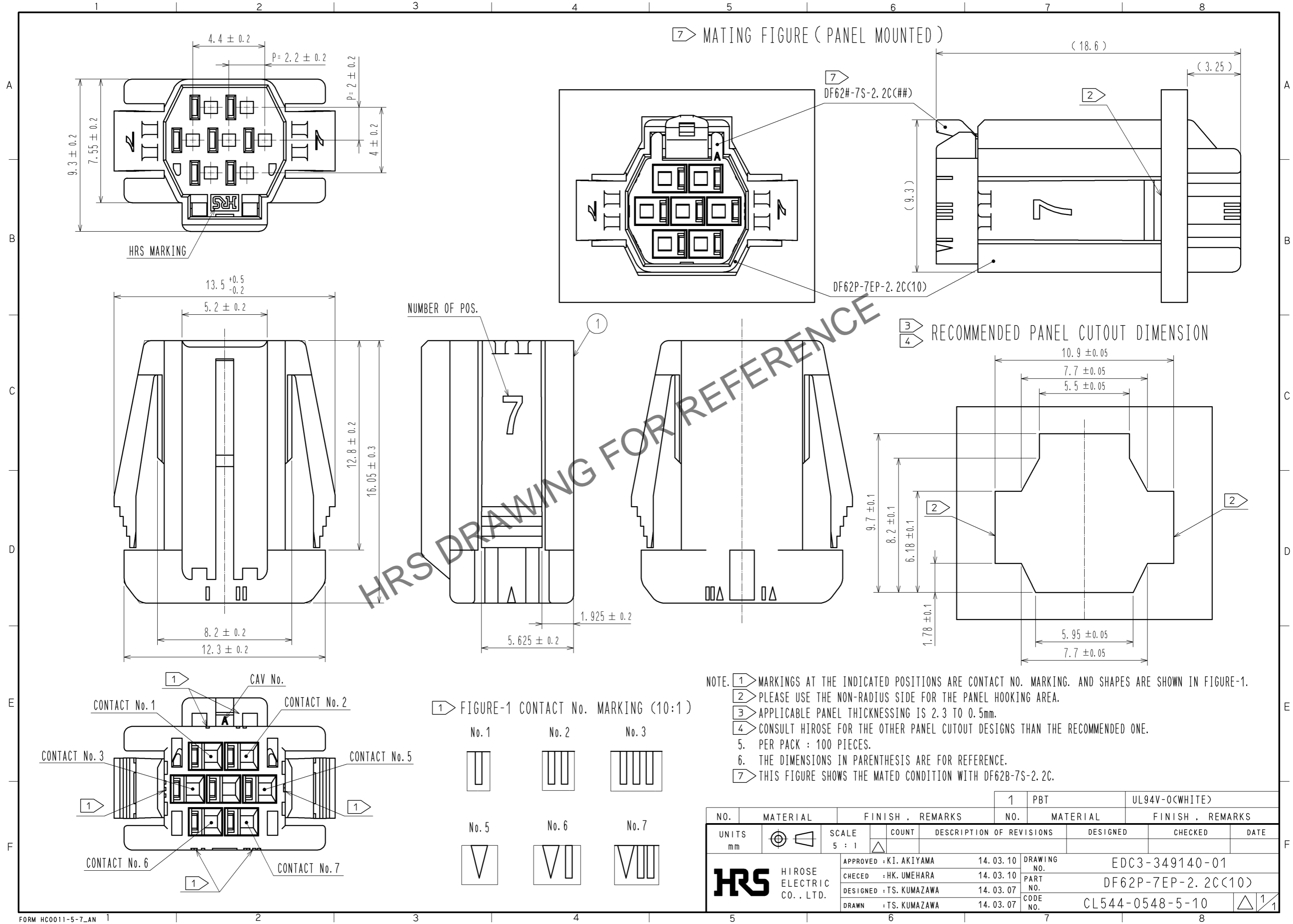
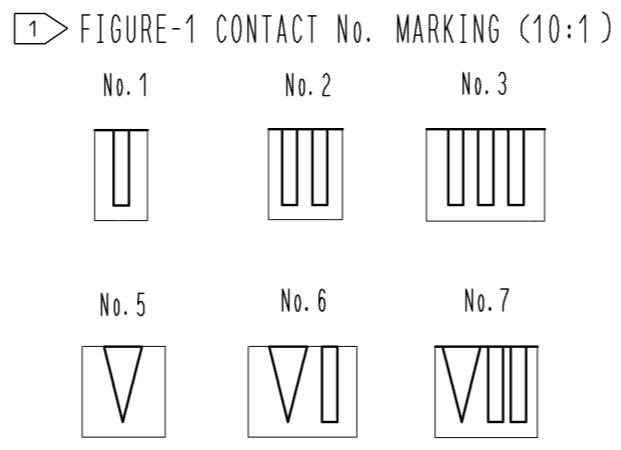


Oct.1.2024 Copyright 2024 HIROSE ELECTRIC CO., LTD. All Rights Reserved.  
 In case of consideration for using Automotive equipment / device which demand high reliability, kindly contact our sales window correspondents.



NOTE. ① MARKINGS AT THE INDICATED POSITIONS ARE CONTACT NO. MARKING. AND SHAPES ARE SHOWN IN FIGURE-1.  
 ② PLEASE USE THE NON-RADIUS SIDE FOR THE PANEL HOOKING AREA.  
 ③ APPLICABLE PANEL THICKENING IS 2.3 TO 0.5mm.  
 ④ CONSULT HIROSE FOR THE OTHER PANEL CUTOUT DESIGNS THAN THE RECOMMENDED ONE.  
 5. PER PACK : 100 PIECES.  
 6. THE DIMENSIONS IN PARENTHESIS ARE FOR REFERENCE.  
 ⑦ THIS FIGURE SHOWS THE MATED CONDITION WITH DF62B-7S-2.2C.



NO.	MATERIAL	FINISH . REMARKS	1	PBT	UL94V-0(WHITE)
UNITS	mm	SCALE	5 : 1	COUNT	DESCRIPTION OF REVISIONS
APPROVED : KI. AKIYAMA 14. 03. 10 CHECED : HK. UMEHARA 14. 03. 10 DESIGNED : TS. KUMAZAWA 14. 03. 07 DRAWN : TS. KUMAZAWA 14. 03. 07			DESIGNED	CHECKED	DATE
<b>HRS</b> HIROSE ELECTRIC CO., LTD.			DRAWING NO.	EDC3-349140-01	
			PART NO.	DF62P-7EP-2. 2C(10)	
			CODE NO.	CL544-0548-5-10	