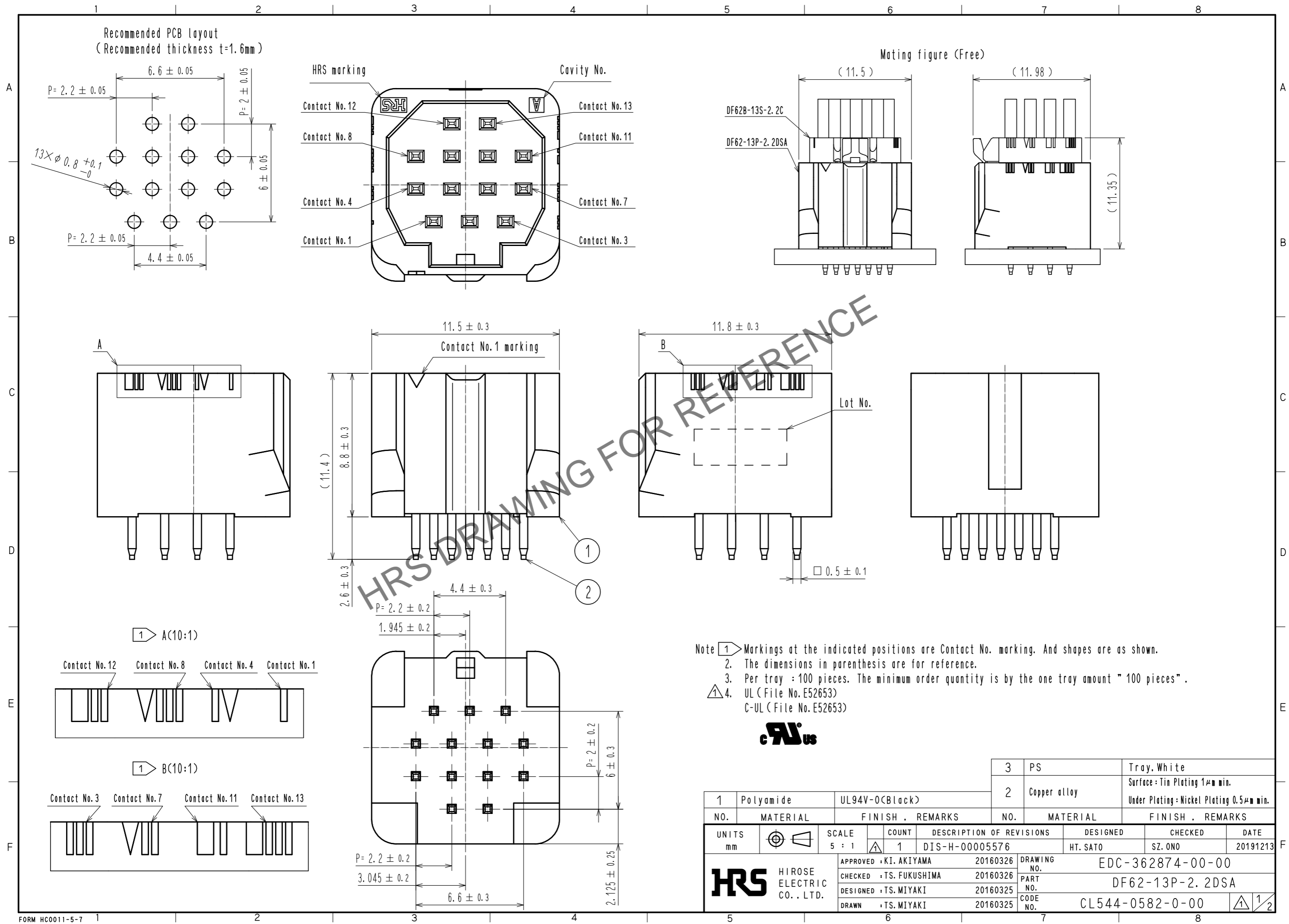


Dec.1.2024 Copyright 2024 HIROSE ELECTRIC CO., LTD. All Rights Reserved.
 In case of consideration for using Automotive equipment / device which demand high reliability, kindly contact our sales window correspondents.

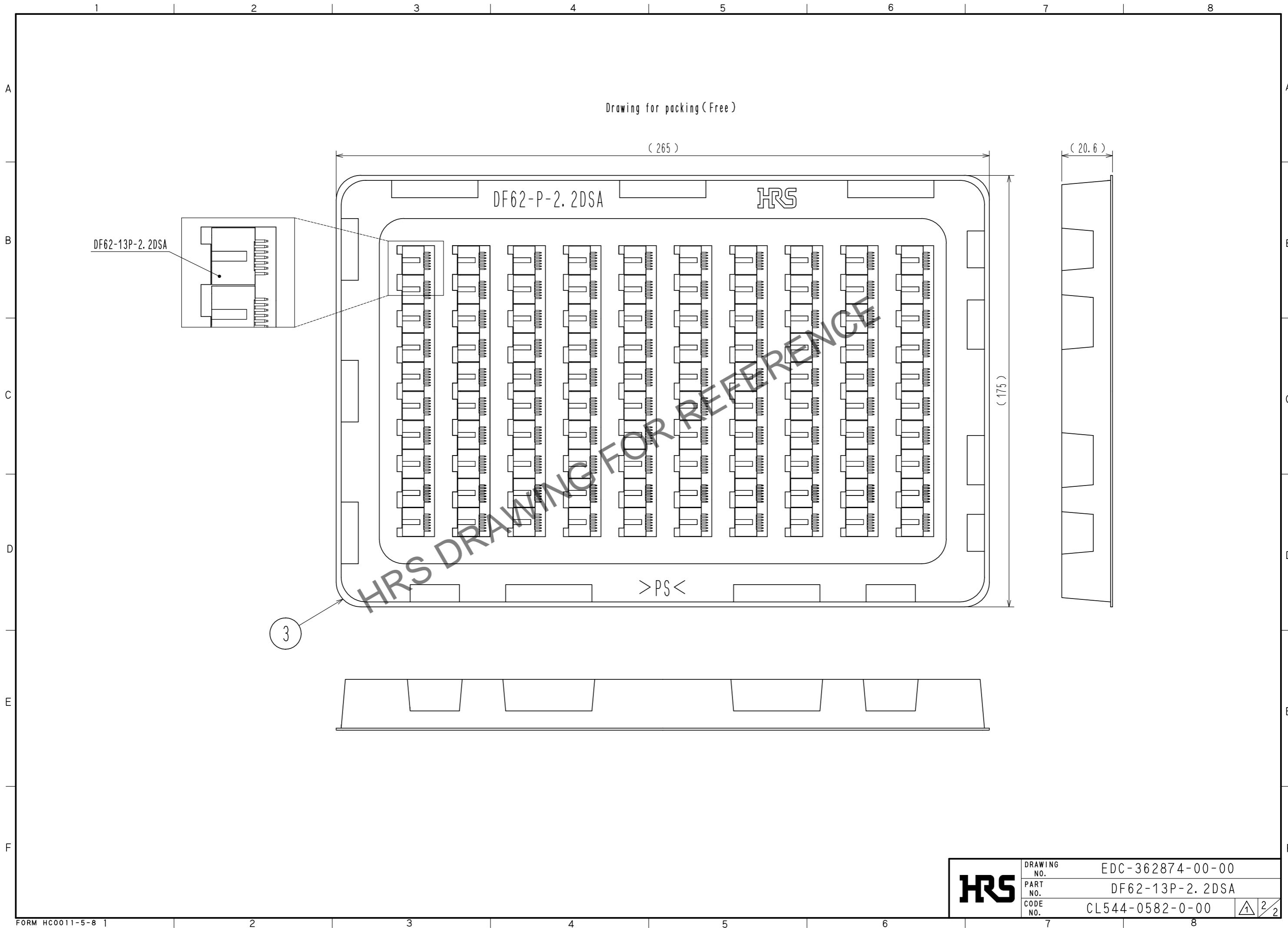


- Note
- 1 Markings at the indicated positions are Contact No. marking. And shapes are as shown.
 2. The dimensions in parenthesis are for reference.
 3. Per tray : 100 pieces. The minimum order quantity is by the one tray amount " 100 pieces" .
 4. UL (File No. E52653)
C-UL (File No. E52653)



1	Polyamide	UL94V-0(Black)	3	PS	Tray, White
2	Copper alloy		2	Copper alloy	Surface: Tin Plating $1\mu\text{m}$ min. Under Plating: Nickel Plating $0.5\mu\text{m}$ min.
NO.	MATERIAL	FINISH . REMARKS	NO.	MATERIAL	FINISH . REMARKS
UNITS		SCALE	COUNT	DESCRIPTION OF REVISIONS	
mm		5 : 1	1	DIS-H-00005576	DESIGNED: HT. SATO
			APPROVED: KI. AKIYAMA	20160326	DESIGNED: HT. SATO
			CHECKED: TS. FUKUSHIMA	20160326	CHECKED: SZ. ONO
			DESIGNED: TS. MIYAKI	20160325	DATE: 20191213
			DRAWN: TS. MIYAKI	20160325	
DRAWING NO.			EDC-362874-00-00		
PART NO.			DF62-13P-2.2DSA		
CODE NO.			CL544-0582-0-00		
			1/2		

Dec.1.2024 Copyright 2024 HIROSE ELECTRIC CO., LTD. All Rights Reserved.
In case of consideration for using Automotive equipment / device which demand high reliability, kindly contact our sales window correspondents.



HRS	DRAWING NO.	EDC-362874-00-00
	PART NO.	DF62-13P-2.2DSA
	CODE NO.	CL544-0582-0-00

2/2