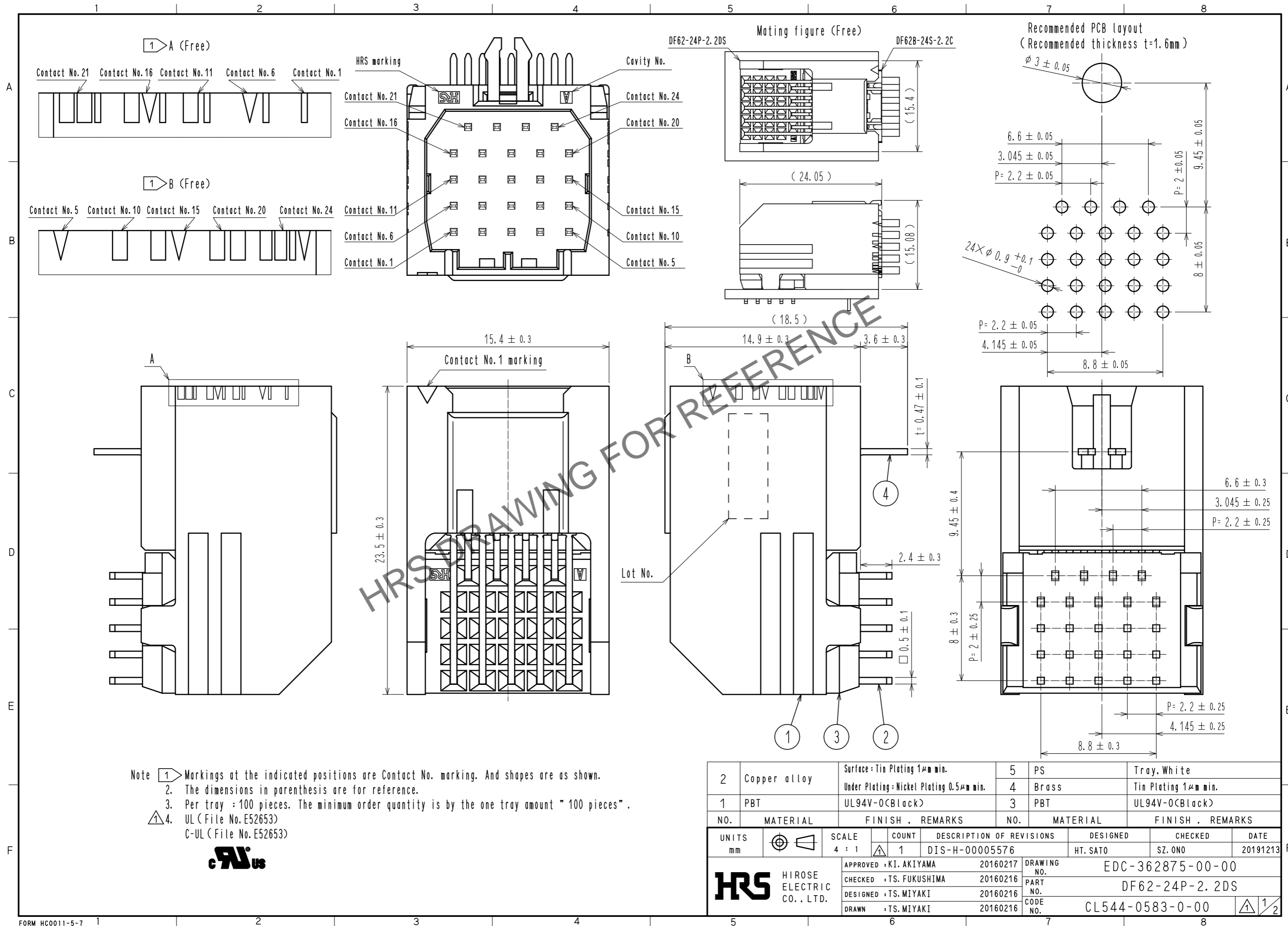


Dec.1.2024 Copyright 2024 HIROSE ELECTRIC CO., LTD. All Rights Reserved.  
In case of consideration for using Automotive equipment / device which demand high reliability, kindly contact our sales window correspondents.



Note

- 1 Markings at the indicated positions are Contact No. marking. And shapes are as shown.
2. The dimensions in parenthesis are for reference.
3. Per tray : 100 pieces. The minimum order quantity is by the one tray amount " 100 pieces".
4. UL (File No. E52653)  
C-UL (File No. E52653)



2	Copper alloy	Surface : Tin Plating 1μm min. Under Plating : Nickel Plating 0.5μm min.	5	PS	Tray, White		
1	PBT	UL94V-0(Black)	4	Brass	Tin Plating 1μm min.		
NO.	MATERIAL	FINISH . REMARKS	NO.	MATERIAL	FINISH . REMARKS		
UNITS	mm	SCALE	COUNT	DESCRIPTION OF REVISIONS	DESIGNED	CHECKED	DATE
		4 : 1	1	DIS-H-00005576	HT. SATO	SZ. ONO	20191213
APPROVED : KI. AKIYAMA 20160217			DRAWING NO. EDC-362875-00-00				
CHECKED : TS. FUKUSHIMA 20160216			PART NO. DF62-24P-2. 2DS				
DESIGNED : TS. MIYAKI 20160216			CODE NO. CL544-0583-0-00				
DRAWN : TS. MIYAKI 20160216			1/2				

Dec.1.2024 Copyright 2024 HIROSE ELECTRIC CO., LTD. All Rights Reserved.  
In case of consideration for using Automotive equipment / device which demand high reliability, kindly contact our sales window correspondents.

Drawing for packing (Free)

( 345 )

( 22.5 )

( 255 )

HRS

DF62-24P-2.2DS

DF62-24P-2.2DS

QTY. 100

> PS <

5

**HRS**

DRAWING NO.	EDC-362875-00-00
PART NO.	DF62-24P-2.2DS
CODE NO.	CL544-0583-0-00

2/2