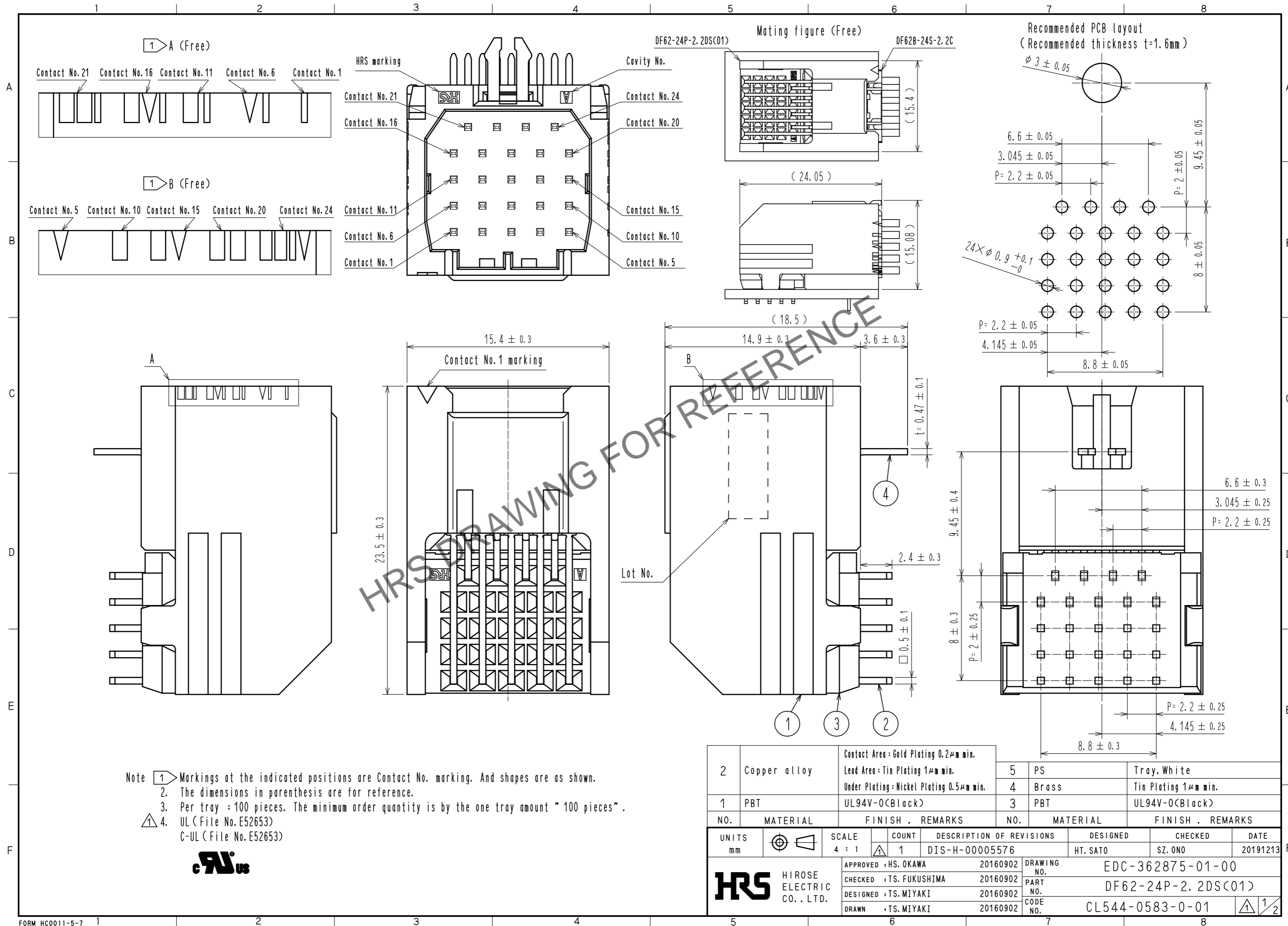
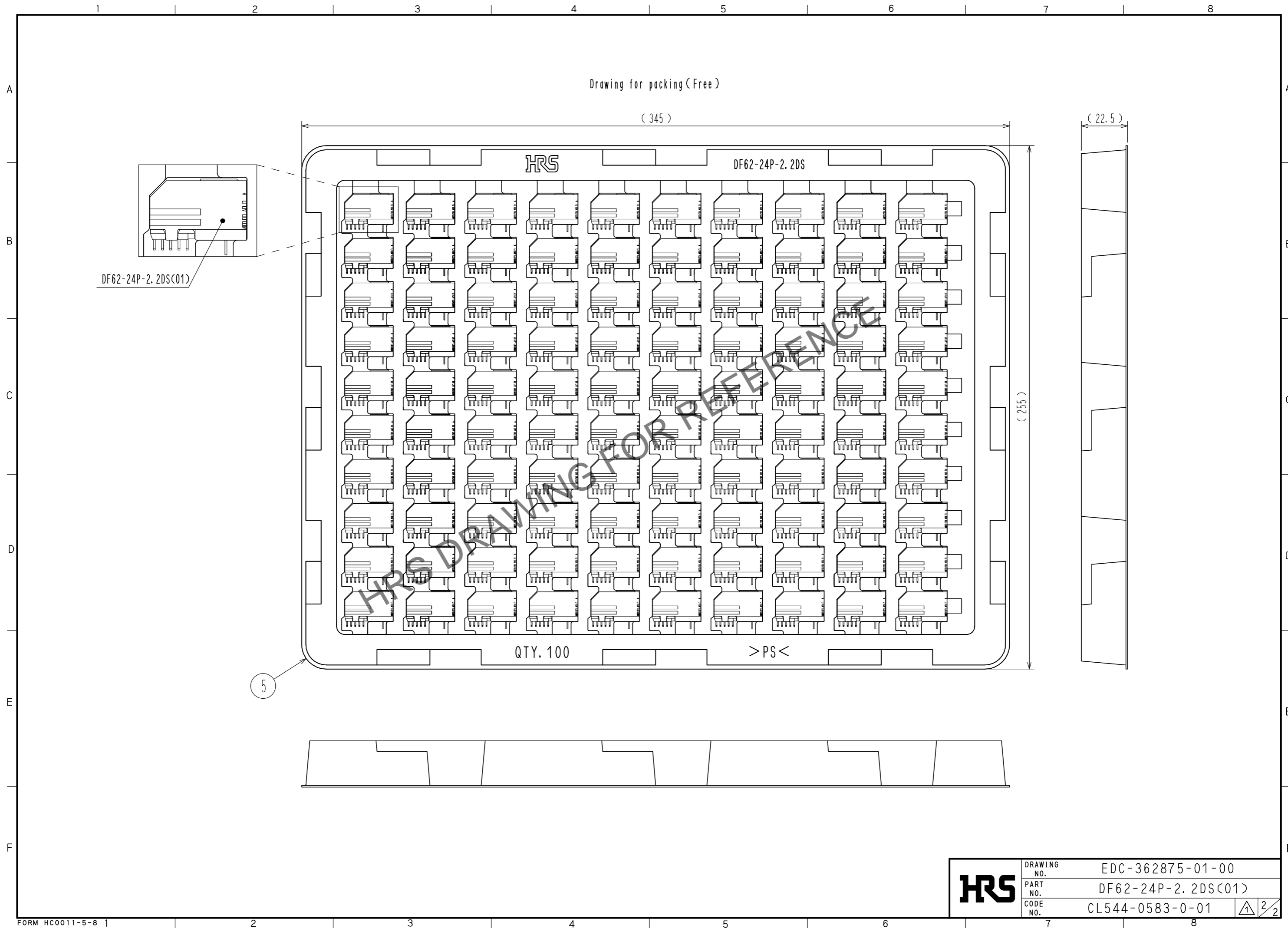


Dec.1.2024 Copyright 2024 HIROSE ELECTRIC CO., LTD. All Rights Reserved.
In case of consideration for using Automotive equipment / device which demand high reliability, kindly contact our sales window correspondents.



2	Copper alloy	Contact Area : Gold Plating $0.2\mu\text{m}$ min. Lead Area : Tin Plating $1\mu\text{m}$ min. Under Plating : Nickel Plating $0.5\mu\text{m}$ min.	5	PS	Tray, White
1	PBT	UL94V-0(Black)	4	Brass	Tin Plating $1\mu\text{m}$ min.
			3	PBT	UL94V-0(Black)
NO.	MATERIAL	FINISH . REMARKS	NO.	MATERIAL	FINISH . REMARKS
UNITS		SCALE	COUNT	DESCRIPTION OF REVISIONS	
mm		4 : 1	1	DIS-H-00005576	
APPROVED : HS. OKAWA			20160902	DESIGNED	
CHECKED : TS. FUKUSHIMA			20160902	HT. SATO	
DESIGNED : TS. MIYAKI			20160902	CHECKED	
DRAWN : TS. MIYAKI			20160902	SZ. ONO	
HRS HIROSE ELECTRIC CO., LTD.			DRAWING NO.		EDC-362875-01-00
			PART NO.		DF62-24P-2.2DS(C01)
			CODE NO.		CL544-0583-0-01
					1/2

Dec.1.2024 Copyright 2024 HIROSE ELECTRIC CO., LTD. All Rights Reserved.
In case of consideration for using Automotive equipment / device which demand high reliability, kindly contact our sales window correspondents.



HRS	DRAWING NO.	EDC-362875-01-00
	PART NO.	DF62-24P-2.2DS(C01)
	CODE NO.	CL544-0583-0-01
		2/2