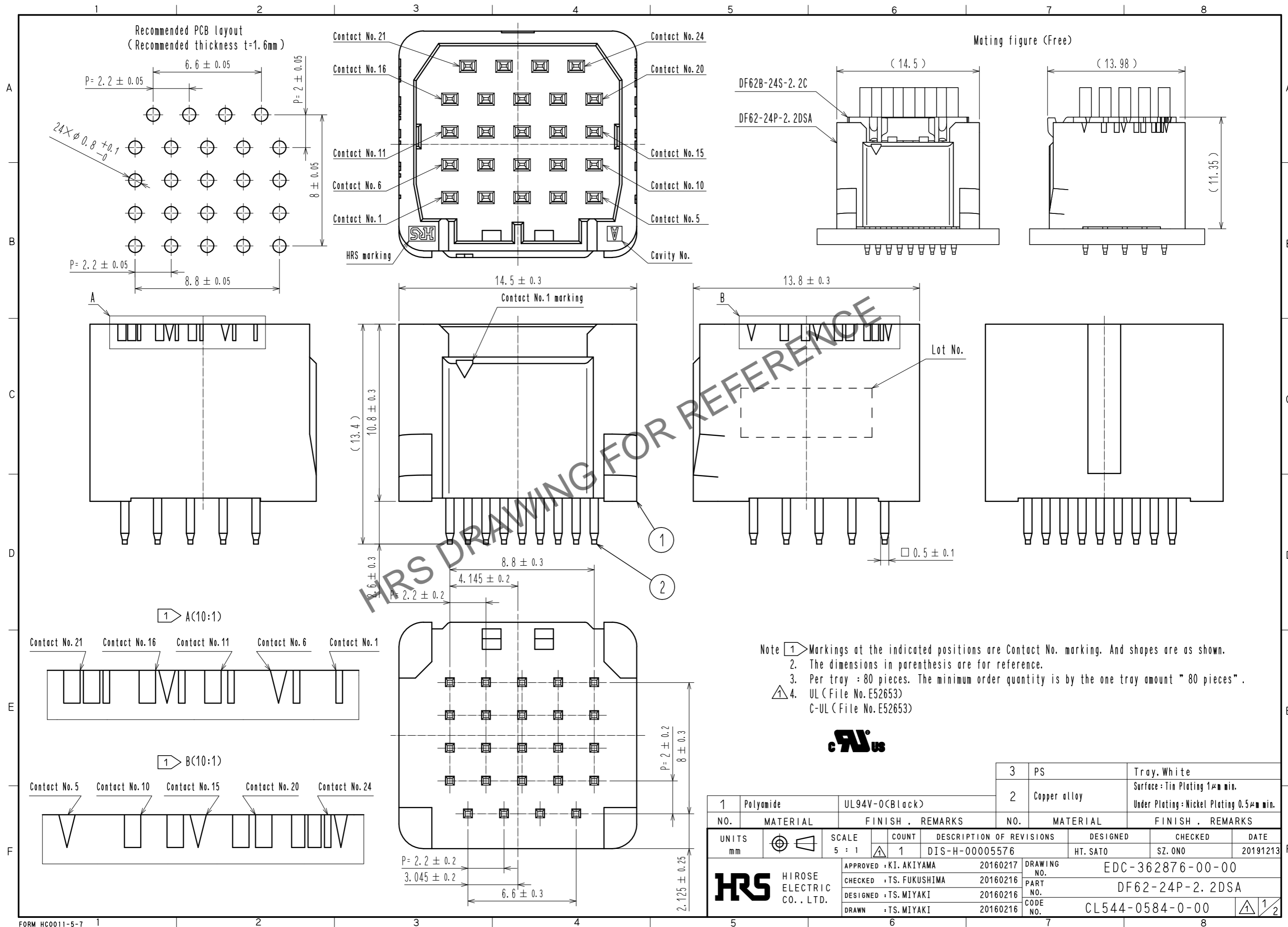
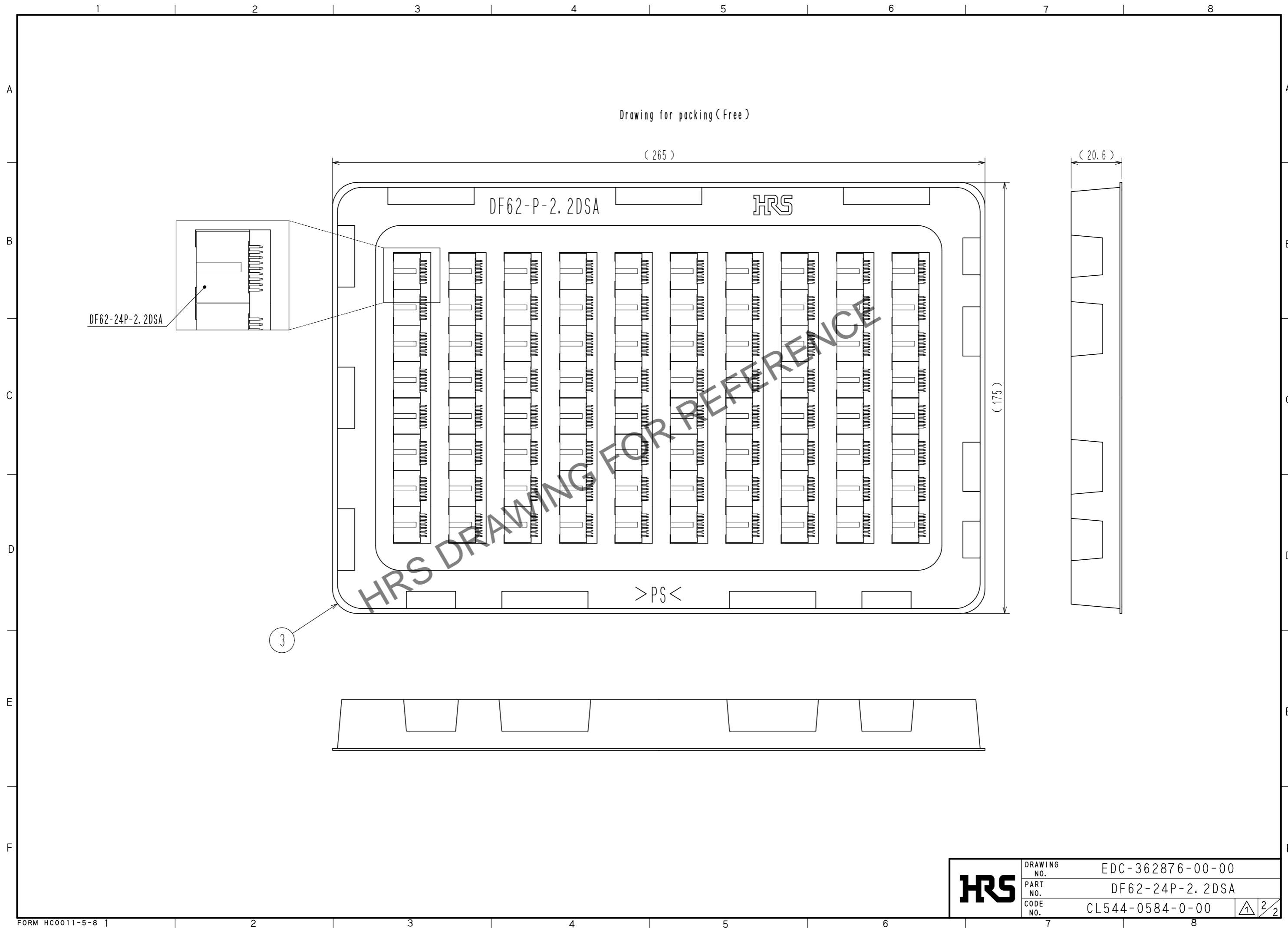


Oct.1.2024 Copyright 2024 HIROSE ELECTRIC CO., LTD. All Rights Reserved.
 In case of consideration for using Automotive equipment / device which demand high reliability, kindly contact our sales window correspondents.



1	Polyamide	UL94V-0(Black)	3	PS	Tray, White		
2	Copper alloy		2	Copper alloy	Surface: Tin Plating $1\mu\text{m}$ min. Under Plating: Nickel Plating $0.5\mu\text{m}$ min.		
NO.	MATERIAL	FINISH . REMARKS	NO.	MATERIAL	FINISH . REMARKS		
UNITS		SCALE	COUNT	DESCRIPTION OF REVISIONS	DESIGNED	CHECKED	DATE
mm		5 : 1	1	DIS-H-00005576	HT. SATO	SZ. ONO	20191213
HRS HIROSE ELECTRIC CO., LTD.		APPROVED : KI. AKIYAMA	20160217	DRAWING NO. EDC-362876-00-00		PART NO. DF62-24P-2.2DSA	
		CHECKED : TS. FUKUSHIMA	20160216	CODE NO. CL544-0584-0-00		1/2	
		DESIGNED : TS. MIYAKI	20160216				
		DRAWN : TS. MIYAKI	20160216				

Oct. 1.2024 Copyright 2024 HIROSE ELECTRIC CO., LTD. All Rights Reserved.
In case of consideration for using Automotive equipment / device which demand high reliability, kindly contact our sales window correspondents.



HRS	DRAWING NO.	EDC-362876-00-00
	PART NO.	DF62-24P-2.2DSA
	CODE NO.	CL544-0584-0-00

1/2