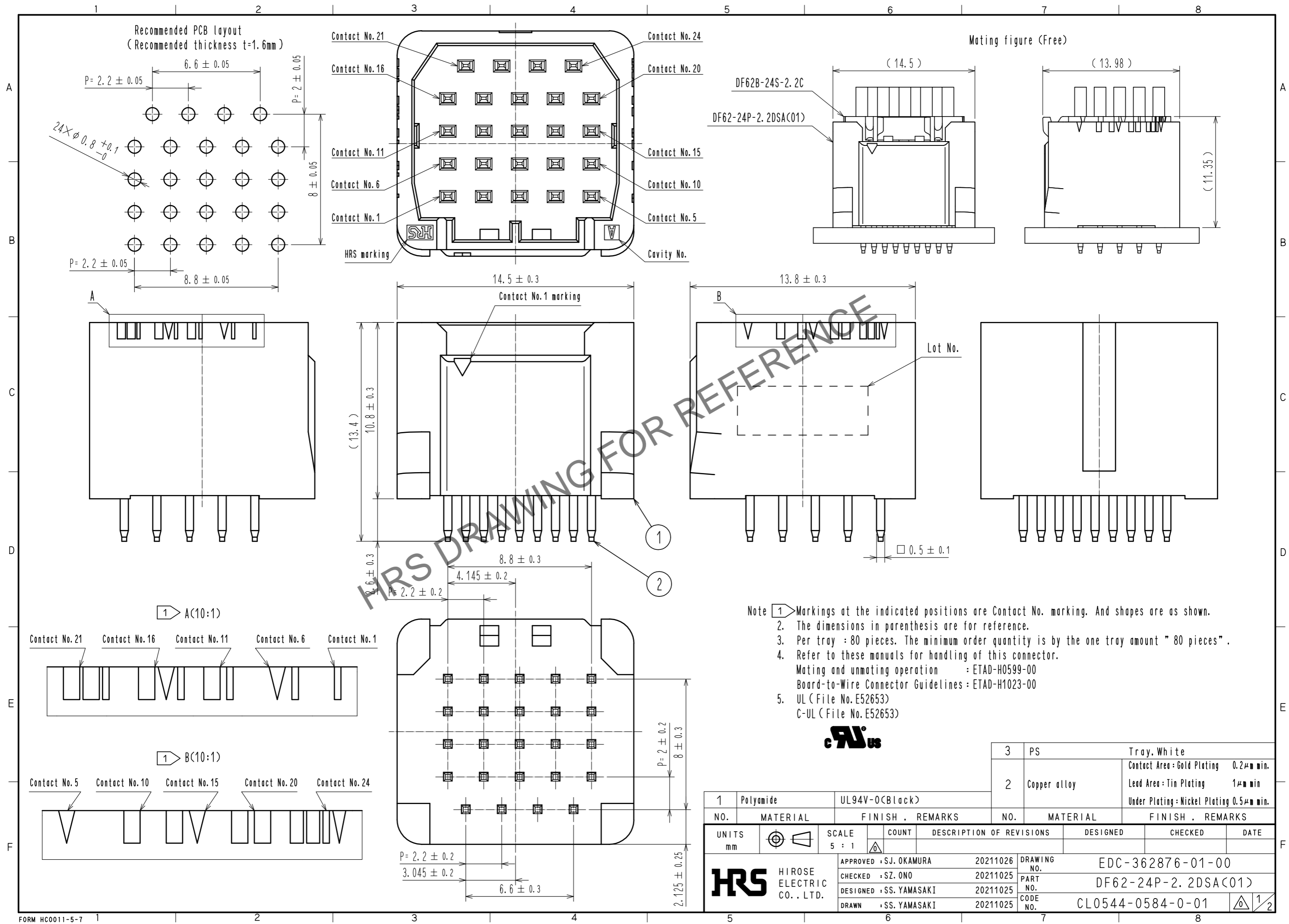


Dec.1.2024 Copyright 2024 HIROSE ELECTRIC CO., LTD. All Rights Reserved.
 In case of consideration for using Automotive equipment / device which demand high reliability, kindly contact our sales window correspondents.

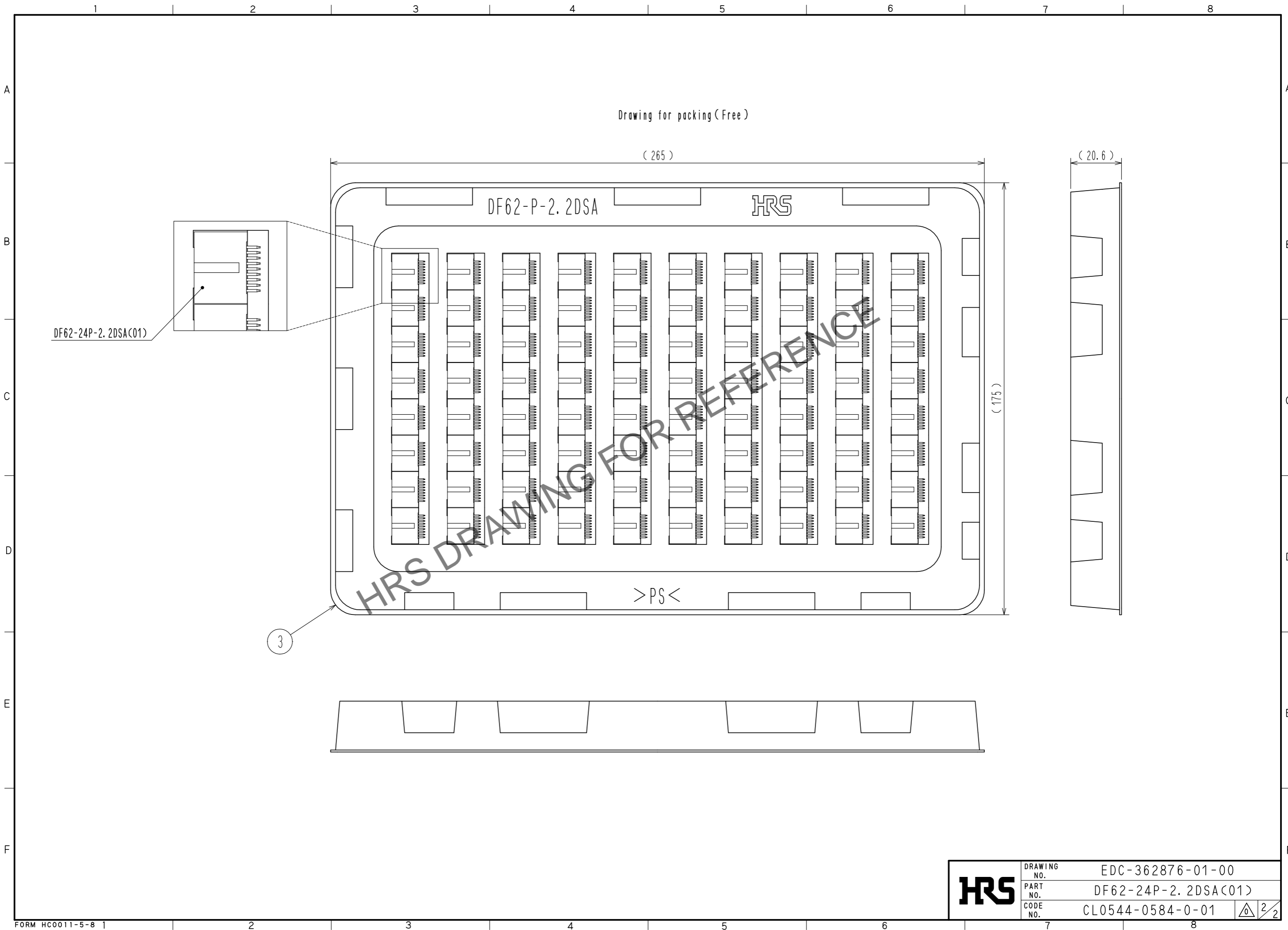


- Note
- 1 Markings at the indicated positions are Contact No. marking. And shapes are as shown.
 2. The dimensions in parenthesis are for reference.
 3. Per tray : 80 pieces. The minimum order quantity is by the one tray amount " 80 pieces".
 4. Refer to these manuals for handling of this connector.
 Mating and unmating operation : ETAD-H0599-00
 Board-to-Wire Connector Guidelines : ETAD-H1023-00
 5. UL (File No. E52653)
 C-UL (File No. E52653)



1	Polyamide	UL94V-0(Black)	3	PS	Tray, White		
2	Copper alloy		2	Copper alloy	Contact Area : Gold Plating 0.2μm min. Lead Area : Tin Plating 1μm min. Under Plating : Nickel Plating 0.5μm min.		
NO.	MATERIAL	FINISH . REMARKS	NO.	MATERIAL	FINISH . REMARKS		
UNITS		SCALE	COUNT	DESCRIPTION OF REVISIONS	DESIGNED	CHECKED	DATE
mm		5 : 1					
HRS HIROSE ELECTRIC CO., LTD.		APPROVED : SJ. OKAMURA	20211026	DRAWING NO. EDC-362876-01-00			
		CHECKED : SZ. ONO	20211025	PART NO. DF62-24P-2.2DSA(01)			
		DESIGNED : SS. YAMASAKI	20211025	CODE NO. CL0544-0584-0-01			
		DRAWN : SS. YAMASAKI	20211025	1/2			

Dec.1.2024 Copyright 2024 HIROSE ELECTRIC CO., LTD. All Rights Reserved.
In case of consideration for using Automotive equipment / device which demand high reliability, kindly contact our sales window correspondents.



HRS	DRAWING NO.	EDC-362876-01-00
	PART NO.	DF62-24P-2.2DSA(01)
	CODE NO.	CL0544-0584-0-01

2/2