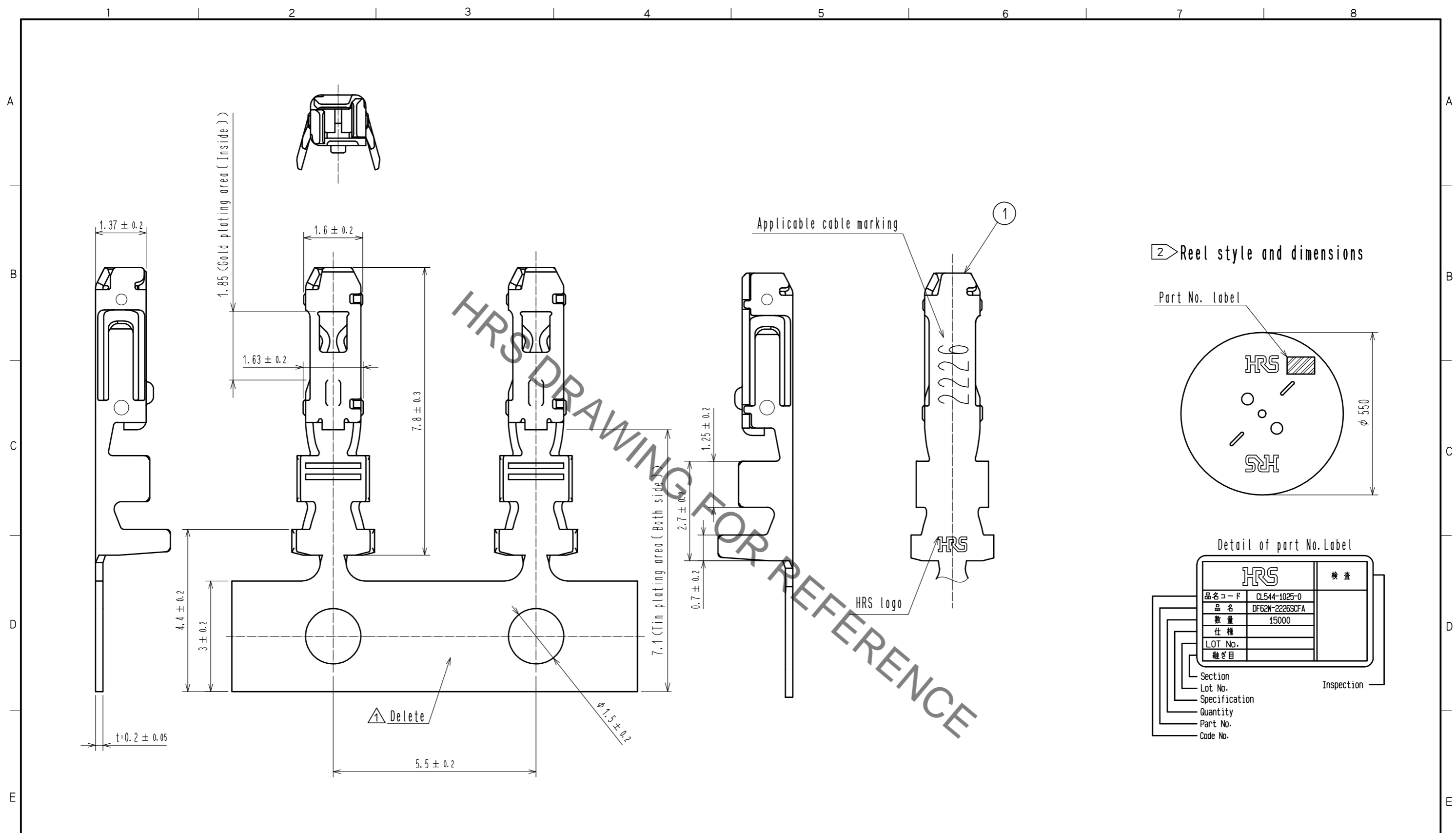


May.1.2021 Copyright 2021 HIROSE ELECTRIC CO., LTD. All Rights Reserved.
 In case of consideration for using Automotive equipment / device which demand high reliability, kindly contact our sales window correspondents.



- Notes
- 1RL : 15000 contacts.
 - Style of reel and box are shown in figure.
 - Up to 5 reels are packed up in one box.
 - Please be sure to check the form of crimping using a cable when you adjust applicator.
 - Always refer to the manuals below for operation of this product.
 For Cable assembly / Cable assembly procedure ETAD-H0760
 For Mating/Unmating / Operation manual ETAD-H0761

1	Phosphor bronze	Contact area:Gold plating 0.2μm min Carrier/Barrel area:Tin plating 1μm min Others : Nickel plating 0.5 μm min
---	-----------------	--

NO.	MATERIAL	FINISH . REMARKS	NO.	MATERIAL	FINISH . REMARKS
UNITS mm		SCALE 10: 1	COUNT 1	DESCRIPTION OF REVISIONS DIS-H-00001435	DESIGNED YK. YAMAGUCHI
APPROVED : KI. AKIYAMA 15.12.14			CHECKED : TS. FUKUSHIMA 15.12.14		
DESIGNED : YK. YAMAGUCHI 15.12.11			DRAWN : MI. SAKIMURA 15.12.11		
DRAWING NO. EDC-364715-00-00			PART NO. DF62W-2226SCFA		
CODE NO. CL544-1025-0-00			DATE 16.03.04		